

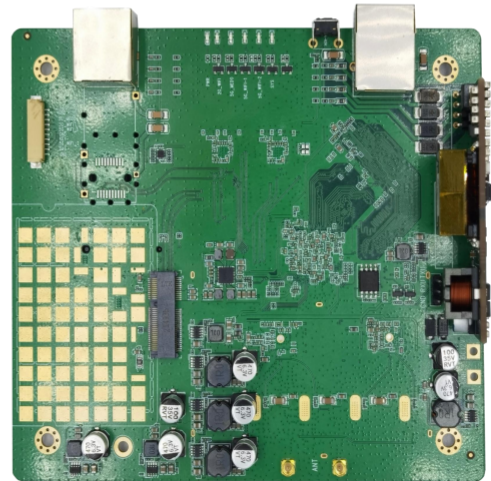
# Nanjing MAXON O.E. TECH. CO., LTD

Add: 6/F, Building A3, Zidong International Creative Park, Zidong Road, Qixia District, Nanjing, China.

## MX-A6022-ME 802.11ax Industrial Wireless Motherboard

### Features

- Chipset: IPQ6010+QCA8081+QCN5052+QCN5022
- 2.4GHz rate 573.5Mbps, 5.8GHz rate 1200Mbps
- Support access point, client, WDS access point, WDS client mode
- Support 2×2MIMO, dual-band combined MMCX connector
- Support Dynamic Frequency Selection (DFS)
- Support wireless probe, with positioning engine can realize personnel positioning function
- Support 1024QAM modulation, the data transmission efficiency is 25% higher than that of 802.11ac
- Support UART/UWB/IoT/wireless/4G, 5G module
- DDR3 4Gb, Nor Flash 128Mb, 1Gb NAND Flash
- 2.5G Ethernet WAN port, 2.5G Ethernet LAN port
- WIFI stand-alone power consumption ≤ 18W, extended 5G/4G LTE module power consumption ≤ 25W
- Support AC(WLC) management (hardware purchased separately)



### Description

MX-A6022-ME 802.11ax Industrial Wireless Motherboard is a dual-band wireless AP that supports IEEE 802.11a/b/g/n/ac/ax protocol with a maximum rate of 1773.5Mbps and can optimize the use of bandwidth and online speed.

It supports multiple working modes of AP/Client and meets different application requirements. It is suitable for different network access plans, support wireless positioning function to meet the requirements of smart wireless coverage; supports KVR seamless roaming technology, With the automatic detection and seamless switching tech to ensure users can enjoy the feelingless roaming under the signal coverage. This product can provide customers with stable wireless signals and make sure that users can always enjoy stable, high-quality and convenient wireless network services.

---

# MAXON

*Link Of Your Think*

Nanjing MAXON O.E. TECH. CO., LTD

TEL: 86-25-86380932

WEB: [www.mxcomm.cn](http://www.mxcomm.cn)

E-MAIL: [info@maxonc.com](mailto:info@maxonc.com)

# Nanjing MAXON O.E. TECH. CO., LTD

Add: 6/F, Building A3, Zidong International Creative Park, Zidong Road, Qixia District, Nanjing, China.

## Radio Frequency Parameters (2.4GHz)

	RATE	TRANSMIT POWER (PER CHAIN)	TRANSMIT POWER (DUAL CHAIN)	TOLERANCE	RECEIVE SENSITIVITY	TOLERANCE
2.4GHz 802.11b	1Mbps	21dBm	24dBm	±2dB	-96dBm	±2dB
	2Mbps	21dBm	24dBm	±2dB	-96dBm	±2dB
	5.5Mbps	21dBm	24dBm	±2dB	-95dBm	±2dB
	11Mbps	21dBm	24dBm	±2dB	-94dBm	±2dB
2.4GHz 802.11g	6Mbps	21dBm	24dBm	±2dB	-95dBm	±2dB
	9Mbps	21dBm	24dBm	±2dB	-94dBm	±2dB
	12Mbps	21dBm	24dBm	±2dB	-92dBm	±2dB
	18Mbps	21dBm	24dBm	±2dB	-90dBm	±2dB
	24Mbps	21dBm	24dBm	±2dB	-87dBm	±2dB
	36Mbps	21dBm	24dBm	±2dB	-85dBm	±2dB
	48Mbps	21dBm	24dBm	±2dB	-83dBm	±2dB
	54Mbps	21dBm	24dBm	±2dB	-81dBm	±2dB
2.4GHz 802.11n HT20	MCS 0	21dBm	24dBm	±2dB	-95dBm	±2dB
	MCS 1	21dBm	24dBm	±2dB	-94dBm	±2dB
	MCS 2	21dBm	24dBm	±2dB	-92dBm	±2dB
	MCS 3	21dBm	24dBm	±2dB	-90dBm	±2dB
	MCS 4	21dBm	24dBm	±2dB	-88dBm	±2dB
	MCS 5	21dBm	24dBm	±2dB	-86dBm	±2dB
	MCS 6	21dBm	24dBm	±2dB	-83dBm	±2dB
	MCS 7	20dBm	23dBm	±2dB	-80dBm	±2dB
2.4GHz 802.11n HT40	MCS 0	21dBm	24dBm	±2dB	-94dBm	±2dB
	MCS 1	21dBm	24dBm	±2dB	-92dBm	±2dB
	MCS 2	21dBm	24dBm	±2dB	-90dBm	±2dB
	MCS 3	21dBm	24dBm	±2dB	-88dBm	±2dB
	MCS 4	21dBm	24dBm	±2dB	-86dBm	±2dB
	MCS 5	21dBm	24dBm	±2dB	-83dBm	±2dB
	MCS 6	21dBm	24dBm	±2dB	-80dBm	±2dB
	MCS 7	20dBm	23dBm	±2dB	-77dBm	±2dB

# MAXON

Link Of Your Think

Nanjing MAXON O.E. TECH. CO., LTD

TEL: 86-25-86380932

WEB: [www.mxcomm.cn](http://www.mxcomm.cn)

E-MAIL: [info@maxonc.com](mailto:info@maxonc.com)

# Nanjing MAXON O.E. TECH. CO., LTD

Add: 6/F, Building A3, Zidong International Creative Park, Zidong Road, Qixia District, Nanjing, China.

## Radio Frequency Parameters (2.4GHz)

	RATE	TRANSMIT POWER (PER CHAIN)	TRANSMIT POWER (DUAL CHAIN)	TOLERANCE	RECEIVE SENSITIVITY	TOLERANCE
2.4GHz 802.11ax HE20	MCS 0	21dBm	24dBm	±2dB	-96dBm	±2dB
	MCS 1	21dBm	24dBm	±2dB	-95dBm	±2dB
	MCS 2	21dBm	24dBm	±2dB	-92dBm	±2dB
	MCS 3	21dBm	24dBm	±2dB	-90dBm	±2dB
	MCS 4	21dBm	24dBm	±2dB	-87dBm	±2dB
	MCS 5	21dBm	24dBm	±2dB	-84dBm	±2dB
	MCS 6	21dBm	24dBm	±2dB	-81dBm	±2dB
	MCS 7	20dBm	23dBm	±2dB	-78dBm	±2dB
	MCS 8	19dBm	21dBm	±2dB	-75dBm	±2dB
	MCS 9	19dBm	21dBm	±2dB	-72dBm	±2dB
	MCS 10	17dBm	20dBm	±2dB	-69dBm	±2dB
	MCS 11	16dBm	19dBm	±2dB	-66dBm	±2dB
2.4GHz 802.11ax HE40	MCS 0	21dBm	24dBm	±2dB	-94dBm	±2dB
	MCS 1	21dBm	24dBm	±2dB	-93dBm	±2dB
	MCS 2	21dBm	24dBm	±2dB	-90dBm	±2dB
	MCS 3	21dBm	24dBm	±2dB	-87dBm	±2dB
	MCS 4	21dBm	24dBm	±2dB	-84dBm	±2dB
	MCS 5	21dBm	24dBm	±2dB	-81dBm	±2dB
	MCS 6	21dBm	24dBm	±2dB	-78dBm	±2dB
	MCS 7	20dBm	23dBm	±2dB	-75dBm	±2dB
	MCS 8	19dBm	21dBm	±2dB	-72dBm	±2dB
	MCS 9	19dBm	21dBm	±2dB	-69dBm	±2dB
	MCS 10	17dBm	20dBm	±2dB	-66dBm	±2dB
	MCS 11	16dBm	19dBm	±2dB	-64dBm	±2dB

# MAXON

Link Of Your Think

Nanjing MAXON O.E. TECH. CO., LTD

TEL: 86-25-86380932

WEB: [www.mxcomm.cn](http://www.mxcomm.cn)

E-MAIL: [info@maxonc.com](mailto:info@maxonc.com)

# Nanjing MAXON O.E. TECH. CO., LTD

Add: 6/F, Building A3, Zidong International Creative Park, Zidong Road, Qixia District, Nanjing, China.

## Radio Frequency Parameters (5.8GHz)

	RATE	TRANSMIT POWER (PER CHAIN)	TRANSMIT POWER (DUAL CHAIN)	TOLERANCE	RECEIVE SENSITIVITY	TOLERANCE
5.8GHz 802.11a	6Mbps	21dBm	24dBm	±2dB	-95dBm	±2dB
	9Mbps	21dBm	24dBm	±2dB	-93dBm	±2dB
	12Mbps	21dBm	24dBm	±2dB	-90dBm	±2dB
	18Mbps	21dBm	24dBm	±2dB	-88dBm	±2dB
	24Mbps	21dBm	24dBm	±2dB	-85dBm	±2dB
	36Mbps	21dBm	24dBm	±2dB	-83dBm	±2dB
	48Mbps	21dBm	24dBm	±2dB	-80dBm	±2dB
	54Mbps	21dBm	24dBm	±2dB	-78dBm	±2dB
5.8GHz 802.11n/ac VHT20	MCS 0	21dBm	24dBm	±2dB	-94dBm	±2dB
	MCS 1	21dBm	24dBm	±2dB	-92dBm	±2dB
	MCS 2	21dBm	24dBm	±2dB	-89dBm	±2dB
	MCS 3	21dBm	24dBm	±2dB	-87dBm	±2dB
	MCS 4	21dBm	24dBm	±2dB	-85dBm	±2dB
	MCS 5	21dBm	24dBm	±2dB	-83dBm	±2dB
	MCS 6	21dBm	24dBm	±2dB	-80dBm	±2dB
	MCS 7	20dBm	23dBm	±2dB	-77dBm	±2dB
	MCS 8	19dBm	22dBm	±2dB	-75dBm	±2dB
5.8GHz 802.11n/ac VHT40	MCS 0	21dBm	24dBm	±2dB	-92dBm	±2dB
	MCS 1	21dBm	24dBm	±2dB	-90dBm	±2dB
	MCS 2	21dBm	24dBm	±2dB	-88dBm	±2dB
	MCS 3	21dBm	24dBm	±2dB	-85dBm	±2dB
	MCS 4	21dBm	24dBm	±2dB	-82dBm	±2dB
	MCS 5	21dBm	24dBm	±2dB	-79dBm	±2dB
	MCS 6	21dBm	24dBm	±2dB	-76dBm	±2dB
	MCS 7	20dBm	23dBm	±2dB	-73dBm	±2dB
	MCS 8	19dBm	22dBm	±2dB	-70dBm	±2dB
	MCS 9	19dBm	22dBm	±2dB	-67dBm	±2dB

# MAXON

Link Of Your Think

Nanjing MAXON O.E. TECH. CO., LTD

TEL: 86-25-86380932

WEB: [www.mxcomm.cn](http://www.mxcomm.cn)

E-MAIL: [info@maxonc.com](mailto:info@maxonc.com)

# Nanjing MAXON O.E. TECH. CO., LTD

Add: 6/F, Building A3, Zidong International Creative Park, Zidong Road, Qixia District, Nanjing, China.

## Radio Frequency Parameters (5.8GHz)

	RATE	TRANSMIT POWER (PER CHAIN)	TRANSMIT POWER (DUAL CHAIN)	TOLERANCE	RECEIVE SENSITIVITY	TOLERANCE
5.8GHz 802.11ac VHT80	MCS 0	21dBm	24dBm	±2dB	-87dBm	±2dB
	MCS 1	21dBm	24dBm	±2dB	-85dBm	±2dB
	MCS 2	21dBm	24dBm	±2dB	-83dBm	±2dB
	MCS 3	21dBm	24dBm	±2dB	-80dBm	±2dB
	MCS 4	21dBm	24dBm	±2dB	-78dBm	±2dB
	MCS 5	21dBm	24dBm	±2dB	-75dBm	±2dB
	MCS 6	21dBm	24dBm	±2dB	-73dBm	±2dB
	MCS 7	20dBm	23dBm	±2dB	-70dBm	±2dB
	MCS 8	19dBm	22dBm	±2dB	-67dBm	±2dB
	MCS 9	19dBm	22dBm	±2dB	-64dBm	±2dB
5.8GHz 802.11ax HET20	MCS 0	21dBm	24dBm	±2dB	-95dBm	±2dB
	MCS 1	21dBm	24dBm	±2dB	-93dBm	±2dB
	MCS 2	21dBm	24dBm	±2dB	-90dBm	±2dB
	MCS 3	21dBm	24dBm	±2dB	-87dBm	±2dB
	MCS 4	21dBm	24dBm	±2dB	-83dBm	±2dB
	MCS 5	21dBm	24dBm	±2dB	-80dBm	±2dB
	MCS 6	21dBm	24dBm	±2dB	-77dBm	±2dB
	MCS 7	20dBm	23dBm	±2dB	-74dBm	±2dB
	MCS 8	19dBm	22dBm	±2dB	-71dBm	±2dB
	MCS 9	19dBm	22dBm	±2dB	-68dBm	±2dB
	MCS 10	17dBm	20dBm	±2dB	-65dBm	±2dB
	MCS 11	16dBm	19dBm	±2dB	-62dBm	±2dB

# MAXON

Link Of Your Think

Nanjing MAXON O.E. TECH. CO., LTD

TEL: 86-25-86380932

WEB: [www.mxcomm.cn](http://www.mxcomm.cn)

E-MAIL: [info@maxonc.com](mailto:info@maxonc.com)

# Nanjing MAXON O.E. TECH. CO., LTD

Add: 6/F, Building A3, Zidong International Creative Park, Zidong Road, Qixia District, Nanjing, China.

## Radio Frequency Parameters (5.8GHz)

	RATE	TRANSMIT POWER (PER CHAIN)	TRANSMIT POWER (DUAL CHAIN)	TOLERANCE	RECEIVE SENSITIVITY	TOLERANCE
5.8GHz 802.11ax HE40	MCS 0	21dBm	24dBm	±2dB	-89dBm	±2dB
	MCS 1	21dBm	24dBm	±2dB	-87dBm	±2dB
	MCS 2	21dBm	24dBm	±2dB	-85dBm	±2dB
	MCS 3	21dBm	24dBm	±2dB	-83dBm	±2dB
	MCS 4	21dBm	24dBm	±2dB	-81dBm	±2dB
	MCS 5	21dBm	24dBm	±2dB	-78dBm	±2dB
	MCS 6	21dBm	24dBm	±2dB	-75dBm	±2dB
	MCS 7	20dBm	23dBm	±2dB	-72dBm	±2dB
	MCS 8	19dBm	22dBm	±2dB	-69dBm	±2dB
	MCS 9	19dBm	22dBm	±2dB	-66dBm	±2dB
	MCS 10	17dBm	20dBm	±2dB	-63dBm	±2dB
	MCS 11	16dBm	19dBm	±2dB	-60dBm	±2dB
5.8GHz 802.11ax HE80	MCS 0	21dBm	24dBm	±2dB	-86dBm	±2dB
	MCS 1	21dBm	24dBm	±2dB	-84dBm	±2dB
	MCS 2	21dBm	24dBm	±2dB	-81dBm	±2dB
	MCS 3	21dBm	24dBm	±2dB	-79dBm	±2dB
	MCS 4	21dBm	24dBm	±2dB	-76dBm	±2dB
	MCS 5	21dBm	24dBm	±2dB	-74dBm	±2dB
	MCS 6	21dBm	24dBm	±2dB	-71dBm	±2dB
	MCS 7	20dBm	23dBm	±2dB	-68dBm	±2dB
	MCS 8	19dBm	22dBm	±2dB	-65dBm	±2dB
	MCS 9	19dBm	22dBm	±2dB	-62dBm	±2dB
	MCS 10	17dBm	20dBm	±2dB	-59dBm	±2dB
	MCS 11	16dBm	19dBm	±2dB	-56dBm	±2dB

# MAXON

*Link Of Your Think*

Nanjing MAXON O.E. TECH. CO., LTD

TEL: 86-25-86380932

WEB: [www.mxcomm.cn](http://www.mxcomm.cn)

E-MAIL: [info@maxonc.com](mailto:info@maxonc.com)

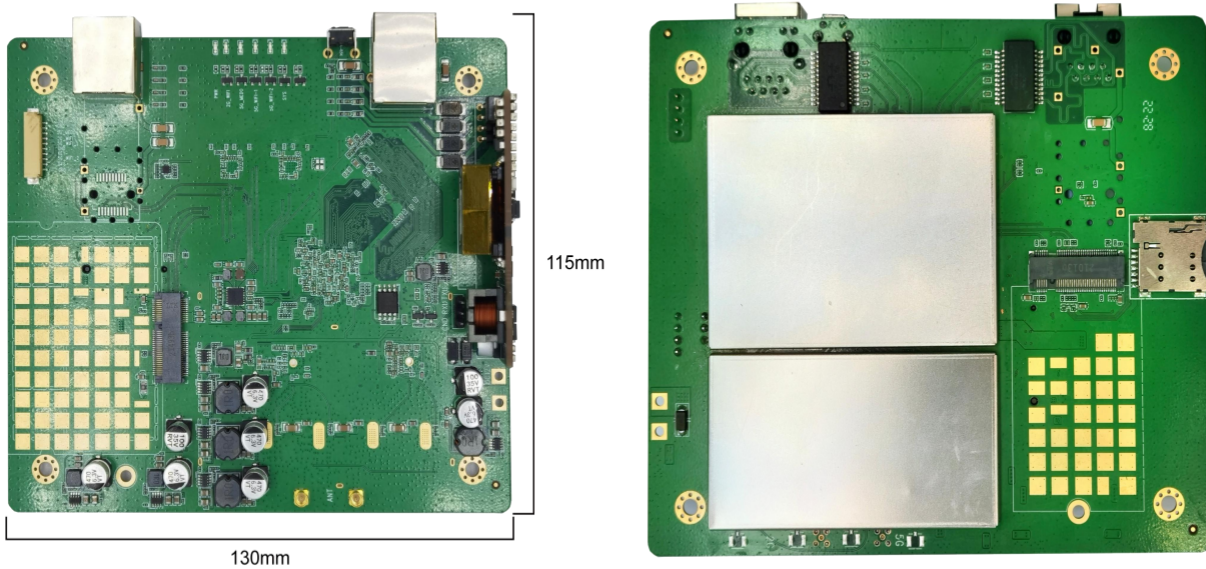
# Nanjing MAXON O.E. TECH. CO., LTD

Add: 6/F, Building A3, Zidong International Creative Park, Zidong Road, Qixia District, Nanjing, China.

## Environmental Requirements

TEMPERATURE	Operating: $-40^{\circ}\text{C} \sim 75^{\circ}\text{C}$ / $-40 \sim 167^{\circ}\text{F}$ ; Storage: $-40^{\circ}\text{C} \sim 90^{\circ}\text{C}$ / $-40 \sim 194^{\circ}\text{F}$
HUMIDITY	Operating: 5% ~ 95%; Storage: 5% ~ 95%

## Dimensions



# MAXON

*Link Of Your Think*

Nanjing MAXON O.E. TECH. CO., LTD

TEL: 86-25-86380932

WEB: [www.mxcomm.cn](http://www.mxcomm.cn)

E-MAIL: [info@maxonc.com](mailto:info@maxonc.com)