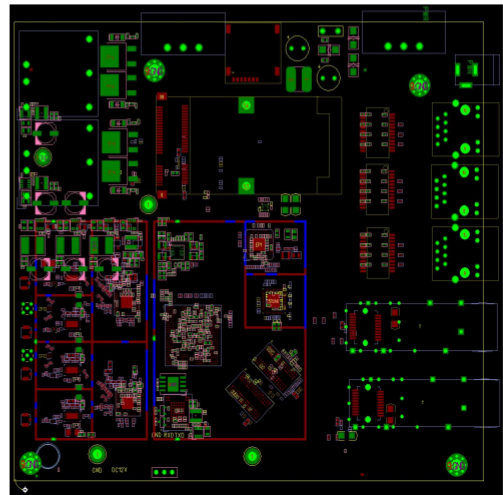


## MX-A6032-MEIS 802.11ax intrinsic safety Dual-Band Wireless Access Point Board

### Features

- Chipset: IPQ6000+QCA8075+QCN5052+QCN5022
  - 2.4GHz rate 573.5Mbps, 5.8GHz rate 1200Mbps
  - Support access point, client, WDS access point, WDS client mode
  - Support 2x2MIMO, dual-band combined MMCX connector
  - Support Dynamic Frequency Selection (DFS)
  - Support Uart/485/IoT module
  - Support 1024QAM modulation, the data transmission efficiency is 25% higher than that of 802.11ac
  - DDR3 4Gb, Nor Flash 128Mb, 1Gb NAND Flash
  - Support 3x Gigabit electrical ports, 2x Gigabit optical ports
  - Professional intrinsic safety power supply design, with under-voltage protection, output short-circuit, over-current, over-voltage protection, input anti-reverse connection function
- 
- WIFI stand-alone power consumption  $\leq 13W$ , extended 5G/4G LTE module power consumption  $\leq 15W$ ;
  - DC or 3-PIN 5.08mm pitch terminals for power supply, wide voltage range as 9~30V
  - Meet the intrinsic safety characteristics
  - Support AC(WLC) management (hardware purchased separately)



### Description

MX-A6032-MEIS 802.11ax intrinsic safety Dual-Band Wireless Access Point Board supports the IEEE 802.11a/b/g/n/ac/ax protocol with a maximum rate of 1773.5Mbps, optimized bandwidth and network speed. Able to support multiple working modes of AP/Client to meet different application requirements.

It is suitable for different network access plans, support wireless positioning function to meet the requirements of smart wireless coverage; supports KVR seamless roaming technology, With the automatic detection and seamless switching tech to ensure users can enjoy the feelingless roaming under the signal coverage. This product can provide customers with stable wireless signals and make sure that users can always enjoy stable, high-quality and convenient wireless network services.

MX-A6032-MEIS provides 3x Gigabit Ethernet ports, 2x Gigabit SFP fiber ports, 2.4G/5.8GHz dual-band combined antenna connector supports access to various types of antennas and meets the coverage of different scenarios. The product hardware design meets the requirements of intrinsic safety, and the reliable and multi-level protection for power supply with port protection design can ensure that the MX-A6032-MEIS can work in extreme industrial environments for a long-term operational duration.

# MAXON

*Link Of Your Think*

Nanjing MAXON O.E. TECH. CO., LTD

TEL: 86-25-86380932

WEB: [www.mxcomm.cn](http://www.mxcomm.cn)

E-MAIL: [info@maxonc.com](mailto:info@maxonc.com)

# Nanjing MAXON O.E. TECH. CO., LTD

Add: 6/F, Building A3, Zidong International Creative Park, Zidong Road, Qixia District, Nanjing, China.

## Radio Frequency Parameters (2.4GHz)

|                        | RATE    | TRANSMIT POWER (PER CHAIN) | TRANSMIT POWER (DUAL CHAIN) | TOLERANCE | RECEIVE SENSITIVITY | TOLERANCE |
|------------------------|---------|----------------------------|-----------------------------|-----------|---------------------|-----------|
| 2.4GHz 802.11b         | 1Mbps   | 21dBm                      | 24dBm                       | ±2dB      | -96dBm              | ±2dB      |
|                        | 2Mbps   | 21dBm                      | 24dBm                       | ±2dB      | -96dBm              | ±2dB      |
|                        | 5.5Mbps | 21dBm                      | 24dBm                       | ±2dB      | -95dBm              | ±2dB      |
|                        | 11Mbps  | 21dBm                      | 24dBm                       | ±2dB      | -94dBm              | ±2dB      |
| 2.4GHz 802.11g         | 6Mbps   | 21dBm                      | 24dBm                       | ±2dB      | -95dBm              | ±2dB      |
|                        | 9Mbps   | 21dBm                      | 24dBm                       | ±2dB      | -94dBm              | ±2dB      |
|                        | 12Mbps  | 21dBm                      | 24dBm                       | ±2dB      | -92dBm              | ±2dB      |
|                        | 18Mbps  | 21dBm                      | 24dBm                       | ±2dB      | -90dBm              | ±2dB      |
|                        | 24Mbps  | 21dBm                      | 24dBm                       | ±2dB      | -87dBm              | ±2dB      |
|                        | 36Mbps  | 21dBm                      | 24dBm                       | ±2dB      | -85dBm              | ±2dB      |
|                        | 48Mbps  | 21dBm                      | 24dBm                       | ±2dB      | -83dBm              | ±2dB      |
| 2.4GHz 802.11n<br>HT20 | MCS0    | 21dBm                      | 24dBm                       | ±2dB      | -95dBm              | ±2dB      |
|                        | MCS1    | 21dBm                      | 24dBm                       | ±2dB      | -94dBm              | ±2dB      |
|                        | MCS2    | 21dBm                      | 24dBm                       | ±2dB      | -92dBm              | ±2dB      |
|                        | MCS3    | 21dBm                      | 24dBm                       | ±2dB      | -90dBm              | ±2dB      |
|                        | MCS4    | 21dBm                      | 24dBm                       | ±2dB      | -88dBm              | ±2dB      |
|                        | MCS5    | 21dBm                      | 24dBm                       | ±2dB      | -86dBm              | ±2dB      |
|                        | MCS6    | 21dBm                      | 24dBm                       | ±2dB      | -83dBm              | ±2dB      |
|                        | MCS7    | 20dBm                      | 23dBm                       | ±2dB      | -80dBm              | ±2dB      |
| 2.4GHz 802.11n<br>HT40 | MCS0    | 21dBm                      | 24dBm                       | ±2dB      | -94dBm              | ±2dB      |
|                        | MCS1    | 21dBm                      | 24dBm                       | ±2dB      | -92dBm              | ±2dB      |
|                        | MCS2    | 21dBm                      | 24dBm                       | ±2dB      | -90dBm              | ±2dB      |
|                        | MCS3    | 21dBm                      | 24dBm                       | ±2dB      | -88dBm              | ±2dB      |
|                        | MCS4    | 21dBm                      | 24dBm                       | ±2dB      | -86dBm              | ±2dB      |
|                        | MCS5    | 21dBm                      | 24dBm                       | ±2dB      | -83dBm              | ±2dB      |
|                        | MCS6    | 21dBm                      | 24dBm                       | ±2dB      | -80dBm              | ±2dB      |
|                        | MCS7    | 20dBm                      | 23dBm                       | ±2dB      | -77dBm              | ±2dB      |

# MAXON

Link Of Your Think

Nanjing MAXON O.E. TECH. CO., LTD

TEL: 86-25-86380932

WEB: [www.mxcomm.cn](http://www.mxcomm.cn)

E-MAIL: [info@maxonc.com](mailto:info@maxonc.com)

# Nanjing MAXON O.E. TECH. CO., LTD

Add: 6/F, Building A3, Zidong International Creative Park, Zidong Road, Qixia District, Nanjing, China.

|                         | RATE  | TRANSMIT POWER (PER CHAIN) | TRANSMIT POWER (DUAL CHAIN) | TOLERANCE | RECEIVE SENSITIVITY | TOLERANCE |
|-------------------------|-------|----------------------------|-----------------------------|-----------|---------------------|-----------|
| 2.4GHz<br>802.11ax HE20 | MCS0  | 21dBm                      | 24dBm                       | ±2dB      | -96dBm              | ±2dB      |
|                         | MCS1  | 21dBm                      | 24dBm                       | ±2dB      | -95dBm              | ±2dB      |
|                         | MCS2  | 21dBm                      | 24dBm                       | ±2dB      | -92dBm              | ±2dB      |
|                         | MCS3  | 21dBm                      | 24dBm                       | ±2dB      | -90dBm              | ±2dB      |
|                         | MCS4  | 21dBm                      | 24dBm                       | ±2dB      | -87dBm              | ±2dB      |
|                         | MCS5  | 21dBm                      | 24dBm                       | ±2dB      | -84dBm              | ±2dB      |
|                         | MCS6  | 21dBm                      | 24dBm                       | ±2dB      | -81dBm              | ±2dB      |
|                         | MCS7  | 20dBm                      | 23dBm                       | ±2dB      | -78dBm              | ±2dB      |
|                         | MCS8  | 19dBm                      | 21dBm                       | ±2dB      | -75dBm              | ±2dB      |
|                         | MCS9  | 19dBm                      | 21dBm                       | ±2dB      | -72dBm              | ±2dB      |
|                         | MCS10 | 17dBm                      | 20dBm                       | ±2dB      | -69dBm              | ±2dB      |
| MCS11                   | 16dBm | 19dBm                      | ±2dB                        | -66dBm    | ±2dB                |           |
| 2.4GHz<br>802.11ax HE40 | MCS0  | 21dBm                      | 24dBm                       | ±2dB      | -94dBm              | ±2dB      |
|                         | MCS1  | 21dBm                      | 24dBm                       | ±2dB      | -93dBm              | ±2dB      |
|                         | MCS2  | 21dBm                      | 24dBm                       | ±2dB      | -90dBm              | ±2dB      |
|                         | MCS3  | 21dBm                      | 24dBm                       | ±2dB      | -87dBm              | ±2dB      |
|                         | MCS4  | 21dBm                      | 24dBm                       | ±2dB      | -84dBm              | ±2dB      |
|                         | MCS5  | 21dBm                      | 24dBm                       | ±2dB      | -81dBm              | ±2dB      |
|                         | MCS6  | 21dBm                      | 24dBm                       | ±2dB      | -78dBm              | ±2dB      |
|                         | MCS7  | 20dBm                      | 23dBm                       | ±2dB      | -75dBm              | ±2dB      |
|                         | MCS8  | 19dBm                      | 21dBm                       | ±2dB      | -72dBm              | ±2dB      |
|                         | MCS9  | 19dBm                      | 21dBm                       | ±2dB      | -69dBm              | ±2dB      |
|                         | MCS10 | 17dBm                      | 20dBm                       | ±2dB      | -66dBm              | ±2dB      |
| MCS11                   | 16dBm | 19dBm                      | ±2dB                        | -64dBm    | ±2dB                |           |

## MAXON

Link Of Your Think

Nanjing MAXON O.E. TECH. CO., LTD

TEL: 86-25-86380932

WEB: [www.mxcomm.cn](http://www.mxcomm.cn)

E-MAIL: [info@maxonc.com](mailto:info@maxonc.com)

# Nanjing MAXON O.E. TECH. CO., LTD

Add: 6/F, Building A3, Zidong International Creative Park, Zidong Road, Qixia District, Nanjing, China.

## Radio Frequency Parameters (5.8GHz)

|                             | RATE  | TRANSMIT POWER (PER CHAIN) | TRANSMIT POWER (DUAL CHAIN) | TOLERANCE | RECEIVE SENSITIVITY | TOLERANCE |
|-----------------------------|-------|----------------------------|-----------------------------|-----------|---------------------|-----------|
| 5.8GHz<br>802.11ax<br>HET20 | MCS0  | 21dBm                      | 24dBm                       | ±2dB      | -95dBm              | ±2dB      |
|                             | MCS1  | 21dBm                      | 24dBm                       | ±2dB      | -93dBm              | ±2dB      |
|                             | MCS2  | 21dBm                      | 24dBm                       | ±2dB      | -90dBm              | ±2dB      |
|                             | MCS3  | 21dBm                      | 24dBm                       | ±2dB      | -87dBm              | ±2dB      |
|                             | MCS4  | 21dBm                      | 24dBm                       | ±2dB      | -83dBm              | ±2dB      |
|                             | MCS5  | 21dBm                      | 24dBm                       | ±2dB      | -80dBm              | ±2dB      |
|                             | MCS6  | 21dBm                      | 24dBm                       | ±2dB      | -77dBm              | ±2dB      |
|                             | MCS7  | 20dBm                      | 23dBm                       | ±2dB      | -74dBm              | ±2dB      |
|                             | MCS8  | 19dBm                      | 22dBm                       | ±2dB      | -71dBm              | ±2dB      |
|                             | MCS9  | 19dBm                      | 22dBm                       | ±2dB      | -68dBm              | ±2dB      |
|                             | MCS10 | 17dBm                      | 20dBm                       | ±2dB      | -65dBm              | ±2dB      |
| MCS11                       | 16dBm | 19dBm                      | ±2dB                        | -62dBm    | ±2dB                |           |
| 5.8GHz<br>802.11ax HE40     | MCS0  | 21dBm                      | 24dBm                       | ±2dB      | -89dBm              | ±2dB      |
|                             | MCS1  | 21dBm                      | 24dBm                       | ±2dB      | -87dBm              | ±2dB      |
|                             | MCS2  | 21dBm                      | 24dBm                       | ±2dB      | -85dBm              | ±2dB      |
|                             | MCS3  | 21dBm                      | 24dBm                       | ±2dB      | -83dBm              | ±2dB      |
|                             | MCS4  | 21dBm                      | 24dBm                       | ±2dB      | -81dBm              | ±2dB      |
|                             | MCS5  | 21dBm                      | 24dBm                       | ±2dB      | -78dBm              | ±2dB      |
|                             | MCS6  | 21dBm                      | 24dBm                       | ±2dB      | -75dBm              | ±2dB      |
|                             | MCS7  | 20dBm                      | 23dBm                       | ±2dB      | -72dBm              | ±2dB      |
|                             | MCS8  | 19dBm                      | 22dBm                       | ±2dB      | -69dBm              | ±2dB      |
|                             | MCS9  | 19dBm                      | 22dBm                       | ±2dB      | -66dBm              | ±2dB      |
|                             | MCS10 | 17dBm                      | 20dBm                       | ±2dB      | -63dBm              | ±2dB      |
| MCS11                       | 16dBm | 19dBm                      | ±2dB                        | -60dBm    | ±2dB                |           |
| 5.8GHz<br>802.11ax HE80     | MCS0  | 21dBm                      | 24dBm                       | ±2dB      | -86dBm              | ±2dB      |
|                             | MCS1  | 21dBm                      | 24dBm                       | ±2dB      | -84dBm              | ±2dB      |
|                             | MCS2  | 21dBm                      | 24dBm                       | ±2dB      | -81dBm              | ±2dB      |
|                             | MCS3  | 21dBm                      | 24dBm                       | ±2dB      | -79dBm              | ±2dB      |
|                             | MCS4  | 21dBm                      | 24dBm                       | ±2dB      | -76dBm              | ±2dB      |
|                             | MCS5  | 21dBm                      | 24dBm                       | ±2dB      | -74dBm              | ±2dB      |
|                             | MCS6  | 21dBm                      | 24dBm                       | ±2dB      | -71dBm              | ±2dB      |
|                             | MCS7  | 20dBm                      | 23dBm                       | ±2dB      | -68dBm              | ±2dB      |
|                             | MCS8  | 19dBm                      | 22dBm                       | ±2dB      | -65dBm              | ±2dB      |
|                             | MCS9  | 19dBm                      | 22dBm                       | ±2dB      | -62dBm              | ±2dB      |
|                             | MCS10 | 17dBm                      | 20dBm                       | ±2dB      | -59dBm              | ±2dB      |
| MCS11                       | 16dBm | 19dBm                      | ±2dB                        | -56dBm    | ±2dB                |           |

# MAXON

Link Of Your Think

Nanjing MAXON O.E. TECH. CO., LTD

TEL: 86-25-86380932

WEB: [www.mxcomm.cn](http://www.mxcomm.cn)

E-MAIL: [info@maxonc.com](mailto:info@maxonc.com)

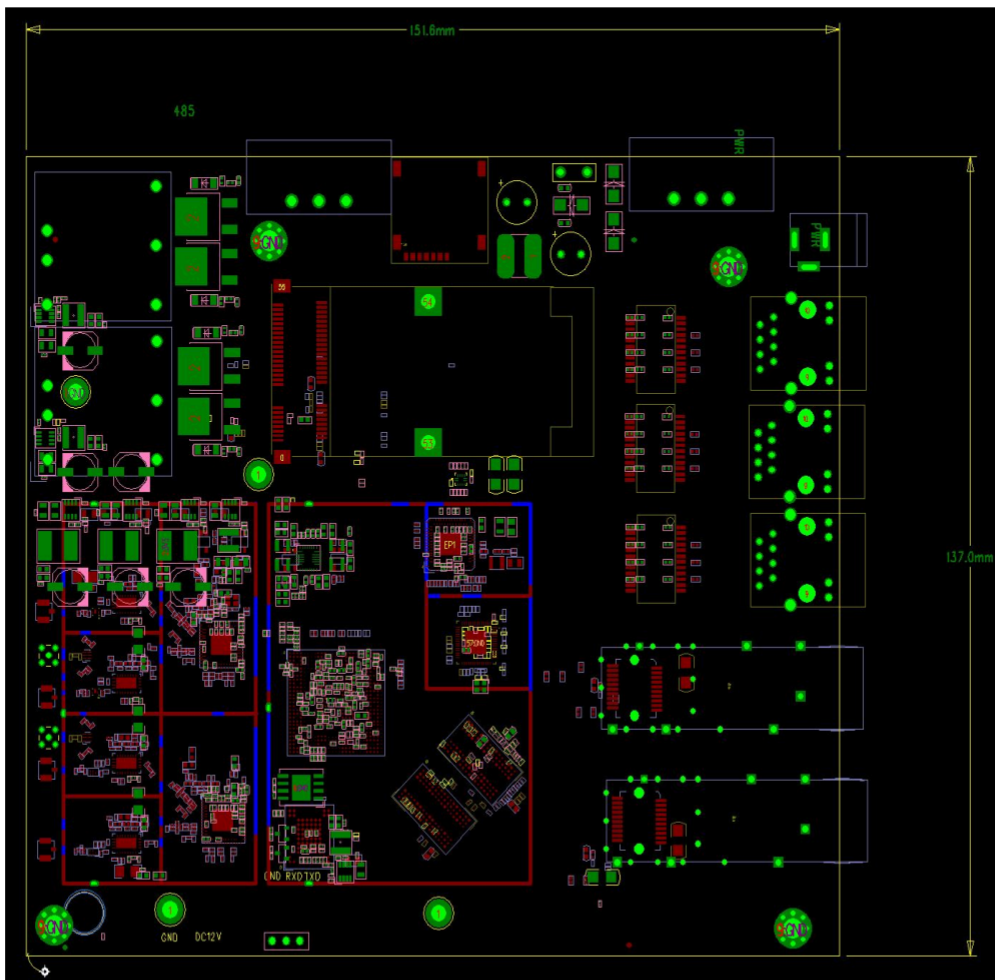
# Nanjing MAXON O.E. TECH. CO., LTD

Add: 6/F, Building A3, Zidong International Creative Park, Zidong Road, Qixia District, Nanjing, China.

## Environmental Requirements

|             |                                                                                                                                                                                  |
|-------------|----------------------------------------------------------------------------------------------------------------------------------------------------------------------------------|
| Temperature | Operating: $-40^{\circ}\text{C} \sim 75^{\circ}\text{C} / -40 \sim 167^{\circ}\text{F}$<br>Storage: $-40^{\circ}\text{C} \sim 85^{\circ}\text{C} / -40 \sim 185^{\circ}\text{F}$ |
| Humidity    | Operating: 5% ~ 95%<br>Storage: 5% ~ 95%                                                                                                                                         |

## Dimension



# MAXON

*Link Of Your Think*

Nanjing MAXON O.E. TECH. CO., LTD

TEL: 86-25-86380932

WEB: [www.mxcomm.cn](http://www.mxcomm.cn)

E-MAIL: [info@maxonc.com](mailto:info@maxonc.com)