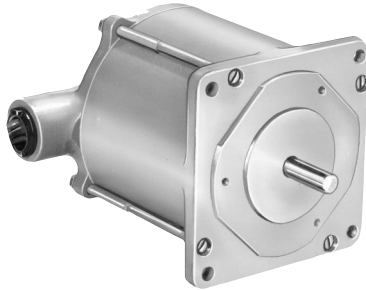


MX11

Hazardous Duty 110mm Frame Size



- Up to 200% rated torque reserve capacity
- ± 5% typical step accuracy
- Hazardous Duty:
UL Class 1, Division 1, Group D



4-CONNECTION STEP MOTORS										
*Model Number	Min. Holding Torque Bipolar 2Ø on oz-in (N-cm)	Winding Specifications				Rotor Inertia oz-in-s ² (kg-cm ²)	Weight - Ship lb (kg)	Maximum Shaft Load		Min. Residual Torque oz-in (N-cm)
		Voltage (VDC)	Current (amperes)	Resistance (ohms)	Inductance (mH)			Overhang lb (kg)	Thrust lb (kg)	
MX111-FF-401U	850 (600)	3.8	1.1	3.6	16	0.055 (3.93)	10 (4.5)	25 (11.3)	50 (22.7)	6 (4.24)
MX112-FF-401U	1390 (981)	1.7	2.7	0.64	2.5	0.114 (8.06)	18 (8.2)	25 (11.3)	50 (22.7)	12 (8.47)

* Change U to EU for double-ended shaft

NOTE: Refer to MOTIONEERING® for speed torque curves

Dimensions

