

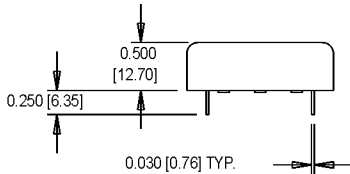
MXO5030 Series

1.5x1.5 in., 12.0 Volt, HCMOS/Sinewave, OCXO

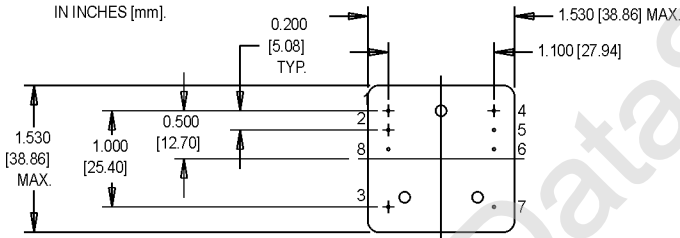


- Low phase noise and aging
- Ideal for Stratum 3E, PCS base stations, Synthesizers, and test equipment

| Ordering Information | | MXO5030 | 1 | B | A | H | D | 00.0000 MHz |
|--------------------------------|-----------------------------|-------------|---|---|---|---|---|-------------|
| Product Series | | MXO5030 | | | | | | |
| Temperature Range | | 1 | | | | | | |
| | 1: 0°C to +70°C | | | | | | | |
| | 8: 0°C to +50°C | | | | | | | |
| | B: -30°C to +70°C | | | | | | | |
| | C: -40°C to +70°C | | | | | | | |
| Stability | | B | | | | | | |
| | B: $\pm 8.0 \times 10^{-8}$ | | | | | | | |
| | F: $\pm 4.0 \times 10^{-8}$ | | | | | | | |
| | J: $\pm 2.0 \times 10^{-8}$ | | | | | | | |
| | P: $\pm 5.0 \times 10^{-9}$ | | | | | | | |
| Crystal Cut | | A | | | | | | |
| | A: AT Cut | | | | | | | |
| | S: SC Cut | | | | | | | |
| Output Type | | H | | | | | | |
| | H: HCMOS | | | | | | | |
| | S: Sinewave | | | | | | | |
| Package Type | | D | | | | | | |
| | D: DIP | | | | | | | |
| Frequency (Customer Specified) | | 00.0000 MHz | | | | | | |

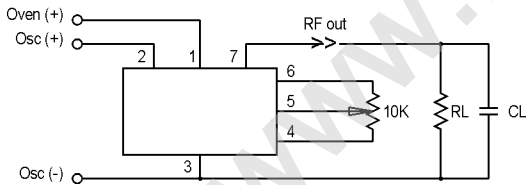


DIMENSIONS ARE SHOWN IN INCHES [mm].



Pin Connections

| PIN | FUNCTION |
|-----|-----------------------------|
| 1 | Oven Supply (+) |
| 2 | Oscillator Supply (+) |
| 3 | Case Ground & Supply Return |
| 4 | Case Ground |
| 5 | Frequency Adjust |
| 6 | Vref |
| 7 | RF Output |
| 8 | Oven Ready (Optional) |



M-tron reserves the right to make changes to the product(s) and service(s) described herein without notice. No liability is assumed as a result of their use or application. No rights under any patent accompany the sale of such product.

M-tron Industries, Inc., PO Box 630, Yankton, SD 57078-0630, USA Phone: 605-665-9321 or 1-800-762-8800 Fax: 605-665-1709 Website: www.mtron.com
 M-tron Industries Limited, 1104 Shanghai Industrial Investment Building, 48-62 Hennessy Road, Wanchai, Hong Kong, China Phone: 852-2866-8023 Fax: 852-2529-1822

