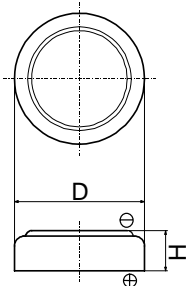


## Cell Type NBL414R Specifications



Nominal Capacity <sup>*1</sup>	0.5mAh	
Nominal Voltage	2V	
Standard Charge / Discharge Current	0.005mA	
Max. Discharge Current	Continuous <sup>*2</sup>	0.02mA
	Pulse <sup>*3</sup>	0.05mA
Charge/Discharge Cycle Characteristics	Discharging Depth of 5%	3000
	Discharging Depth of 10%	300
Charging Method	Constant Voltage Charge	
Temperature Range	-20 ~ 60	
Weight	0.08g	
Dimensions	Diameter(D)	4.8mm
	Height(H)	1.4mm
Max. Reflow Temperature	260	

\*1 Nominal capacity is determined to an end voltage of 1.0V when the battery is allowed to discharge at a standard current level at 23°C.

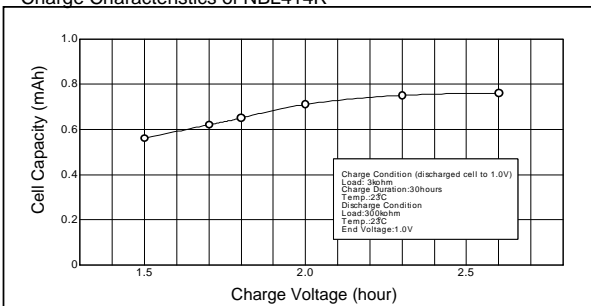
\*2 Current value is determined so that 50% of the nominal capacity is obtained with an end voltage of 1.0V at 23 °C.

\*3 Current value for obtaining 1.0V cell voltage when 15sec. pulse is applied at 50% discharge depth at 23 °C.

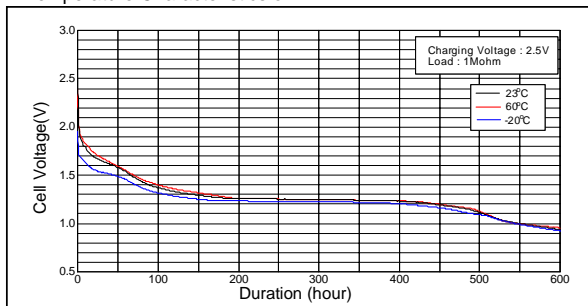
\* NBL414R is capable of reflow soldering. Consult Sanyo about the reflow condition.

### Typical Characteristics

Charge Characteristics of NBL414R



Temperature Characteristics of NBL414R



Discharge/Discharge Cycle Characteristics of NBL414R

