

NF3000C-VQ Series

3 Phase & 3 lines 480VAC

Inquir

Large current



UL1283 (file No.E102708)
EN60939-2 (file No.R50031207)

up to 150A

Application

Inverter/UPS/Machining system etc.

Specifications

Part No.	Rated Current	Weight	Dimensions [mm]													
			A	B	C	D	E	F	G	H	J	K	L	M	N	P
NF3050C-VQ	50A	2.9Kg	217	200	185	170	120	90	44	115	85	20	5.5x7	dia5.5	M6	M4
NF3060C-VQ	60A	3.0Kg	217	200	185	170	120	90	44	115	85	20	5.5x7	dia5.5	M6	M4
NF3080C-VQ	80A	3.6Kg	217	200	185	170	120	90	44	115	85	20	5.5x7	dia5.5	M6	M4
NF3100C-VQ	100A	4.3Kg	254	230	215	200	150	120	57	115	80	30	6.5x8	dia6.5	M8	M6
NF3150C-VQ	150A	9.0Kg	314	300	280	260	200	170	57	130	90	35	6.5x8	dia6.5	M8	M6
NF3200C-VQ	200A	16Kg	450	430	338	100	190	230	7	180	133	M10	M8			
NF3250C-VQ	250A	16Kg	450	430	338	100	190	230	7	180	133	M10	M8			
NF3300C-VQ	300A	23Kg	500	475	400		160	200	12	180	133	M10	M8			
NF3350C-VQ	350A	23Kg	500	475	400		160	200	12	180	133	M10	M8			
NF3400C-VQ	400A	21Kg														
NF3500C-VQ	500A	21Kg														
NF3600C-VQ	600A	26Kg														
NF31000C-VQ	1000A	60Kg														
Rated Voltage	480VAC															
Leakage Current	250mA															
Ambient temp.	-20 up to 50 Deg.C															

Note:In case of center grounding type power supply and no phase disconnection,leakage current shall not flow.(A measureding to UL1283/IEC)

fig1 (50-150A)

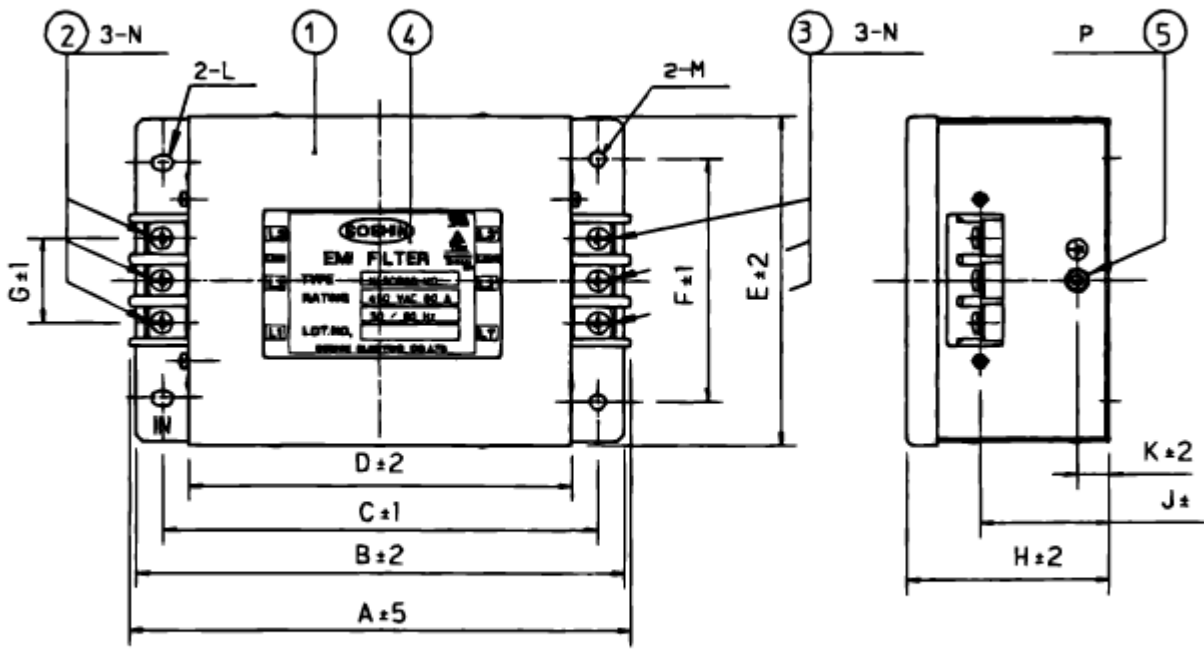


fig2 (200,250,300A)

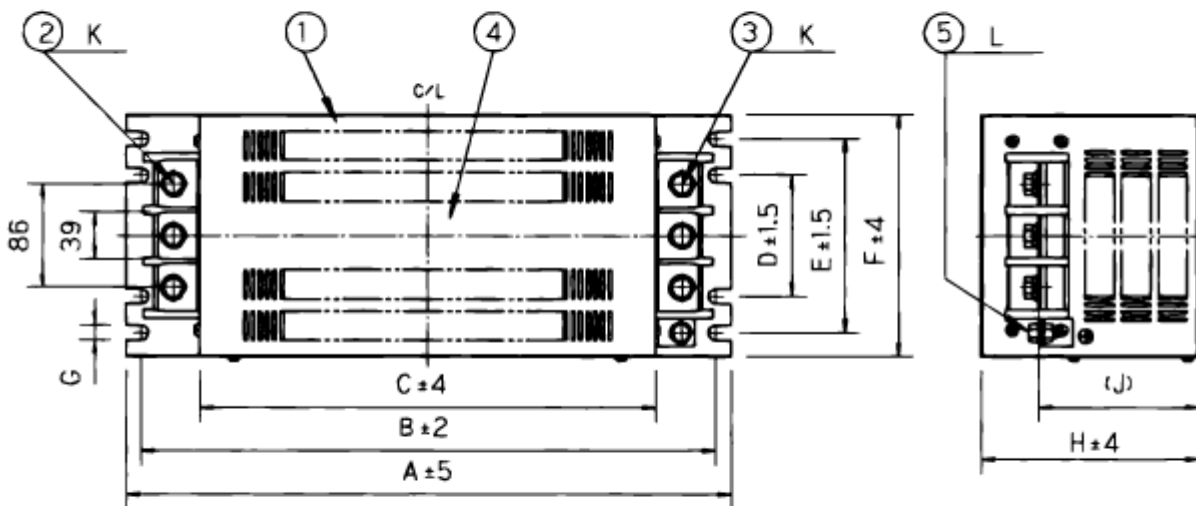
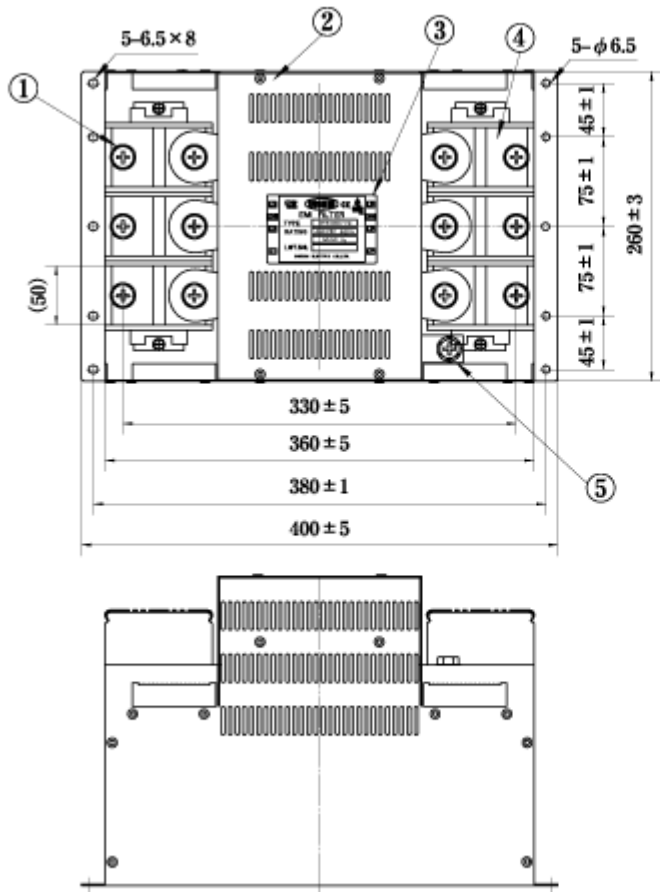


fig3 (400A)



No	Item
1	Input terminal (M12)
2	Metal case
3	Label
4	Output terminal (M12)
5	Earthing terminal (M10)

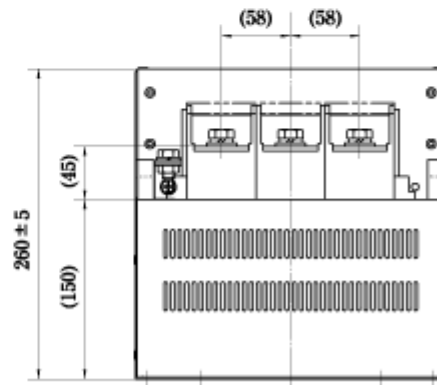
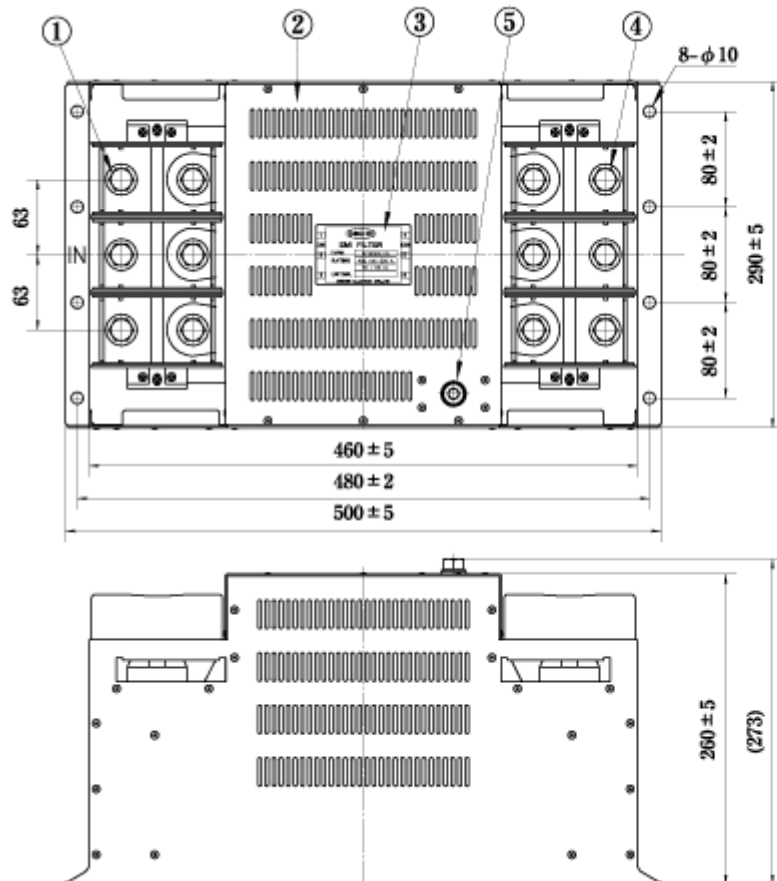


fig4 (500A,600A)



No	Item
1	Input terminal (M12)
2	Metal case
3	Label
4	Output terminal (M12)
5	Earthing terminal (M10)

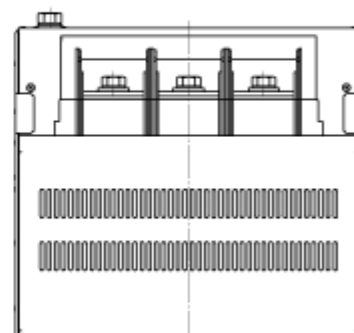
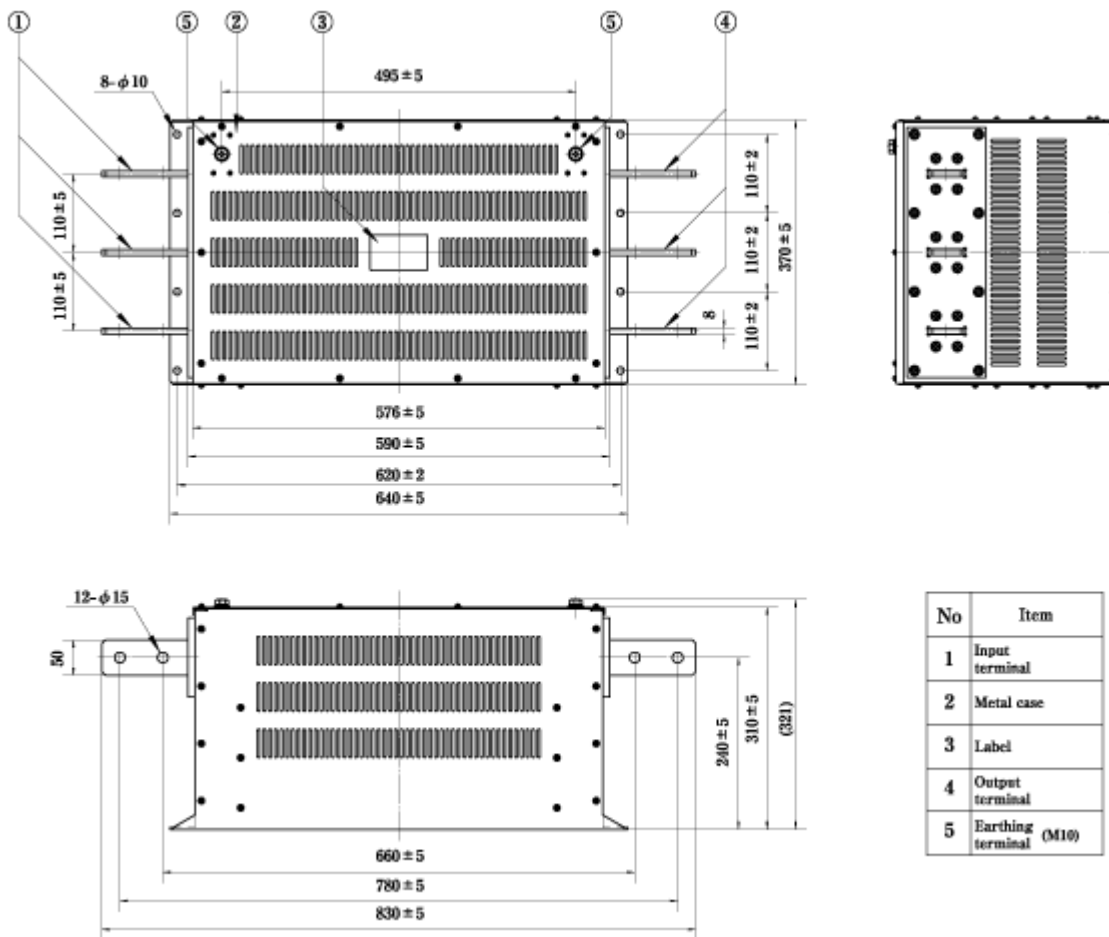
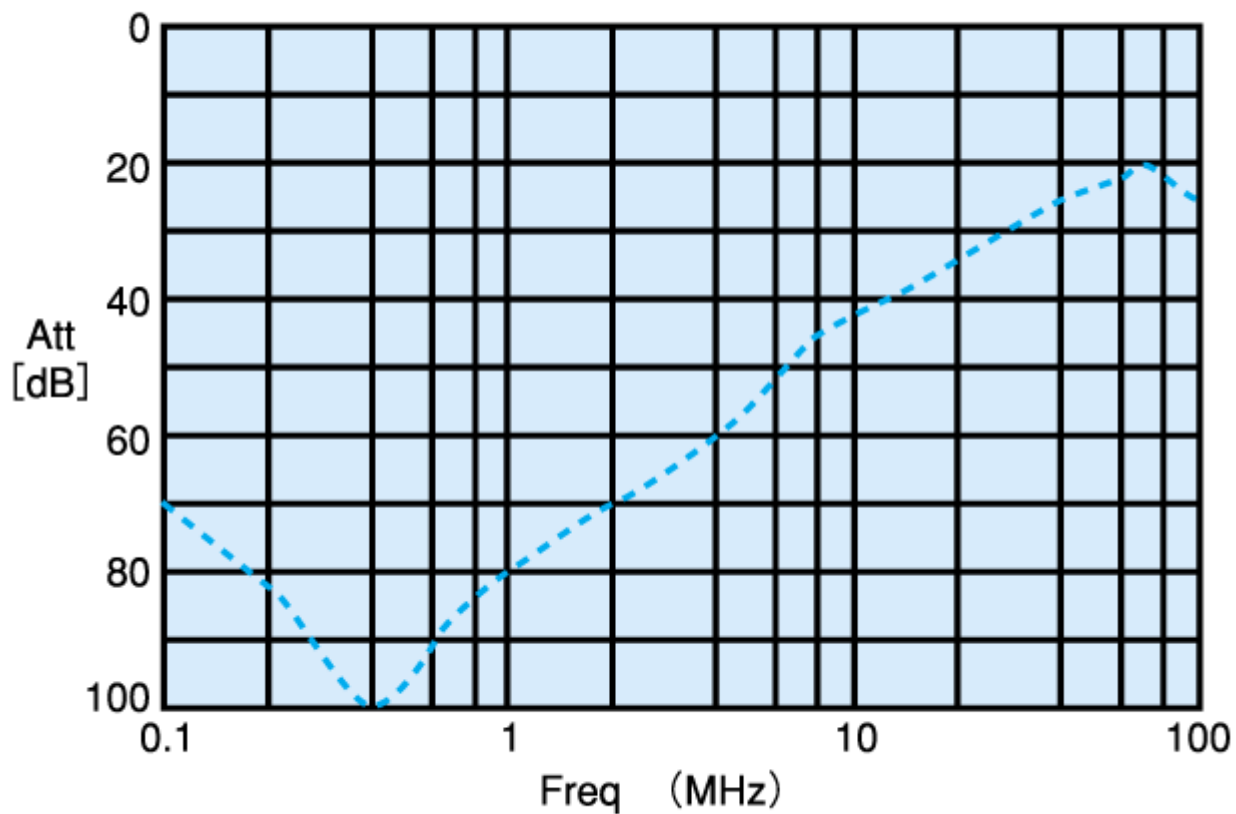


fig5 (1000A)



Frequency Data



Circuit Diagram

