

LOW DROPOUT VOLTAGE REGULATOR WITH ON/OFF CONTROL

■ GENERAL DESCRIPTION

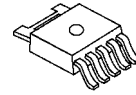
The NJM2386A is a general purpose low dropout voltage regulators with ON/OFF control.

The output current is up to 1.0A and dropout voltage is up 0.2V typical at 500mA load.

It features high maximum input voltage of 30V for a wide application range including TV, home appliance and power modules.

Compared with the NJM2386, Off control quiescent current is significantly reduces for current sensitive applications.

■ PACKAGE OUTLINE

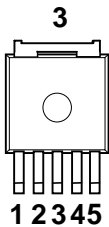


NJM2386ADL3

■ FEATURES

- High Maximum Input Voltage Up to 30V
- Low Dropout Voltage 0.2V typ. at $I_o=0.5A$
- Output Current $I_o(max.)=1.0A$
- ON/OFF Control (Active High)
- OFF Control Quiescent Current
- Internal Short Circuit Current Limit
- Internal Overvoltage Protection
- Internal Thermal Overload Protection
- Bipolar Technology
- Package Outline TO-252-5

■ PIN CONFIGURATION

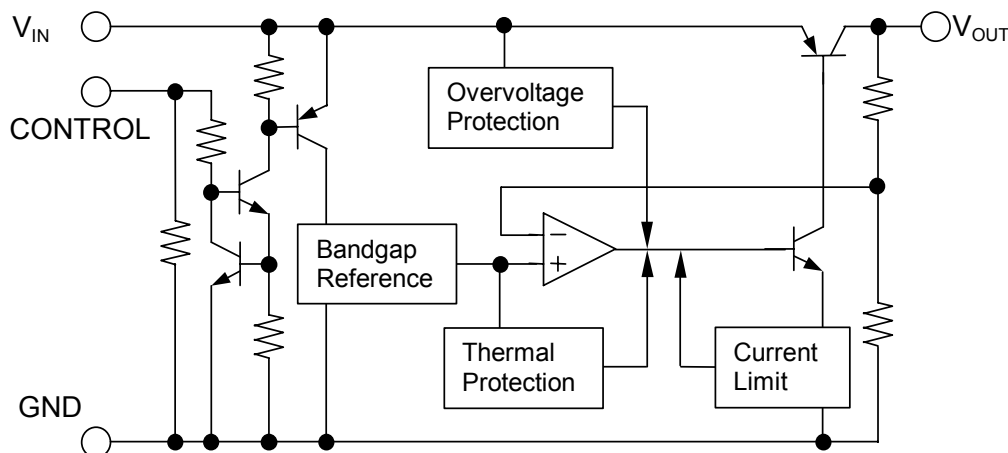


NJM2386ADL3

PIN FUNCTION

1. V_{IN}
2. ON/OFF CONTROL
3. V_{OUT}
4. N.C.
5. GND

■ EQUIVALENT CIRCUIT



NJM2386A

www.DataSheet4U.com

■ OUTPUT VOLTAGE RANK LIST

Device Name	V _{OUT}
NJM2386ADL3-33	3.3V
NJM2386ADL3-05	5.0V
NJM2386ADL3-08	8.0V
NJM2386ADL3-09	9.0V
NJM2386ADL3-12	12.0V

■ ABSOLUTE MAXIMUM RATINGS

(Ta=25°C)

PARAMETER	SYMBOL	RATINGS	UNIT
Input Voltage	V _{IN}	+35	V
Control Voltage	V _{CONT}	+35(*1)	V
Output Current	I _o	1.0	A
Power Dissipation	P _D	10(Tc≤25°C) / 1(Ta≤25°C)	W
Operating Junction Temperature Range	T _j	-40 ~ +150	°C
Operating Temperature Range	T _{opr}	-40 ~ +85	°C
Storage Temperature Range	T _{stg}	-50 ~ +150	°C

(*1): When input voltage is less than +35V, the absolute maximum control voltage is equal to the input voltage.

■ ELECTRICAL CHARACTERISTICS (V_{IN}=V_O+1V, I_o=0.5A, C_{IN}=0.33μF, C_o=22μF, T_j=25°C)

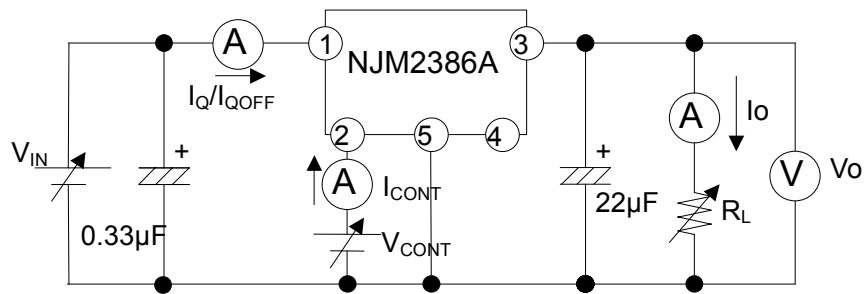
Measurement is conducted by pulse testing.

PARAMETER	SYMBOL	CONDITIONS	MIN.	TYP.	MAX.	UNIT
Input Voltage	V _{IN}		-	-	30	V
Output Voltage	V _o	V _{IN} =V _O +1V	-2%	-	+2%	V
Line Regulation	ΔV _o /ΔV _{IN}	V _{IN} =V _O +1V ~ V _O +17V	-	0.04	0.16	%/V
Load Regulation	ΔV _o /ΔI _o	V _{IN} =V _O +2V, I _o =0A ~ 1.0A	-	0.2	1.4	%/A
Average Temperature Coefficient of Output Voltage	ΔV _o /ΔT	T _j =0 ~ +125°C	-	±0.02	-	%/°C
Quiescent Current	I _Q	I _o =0A, V _{CONT} =2.7V Except I _{CONT}	-	-	5	mA
OFF Control Quiescent Current	I _{Q(OFF)}	V _{CONT} =0V	-	-	1	μA
Dropout Voltage	ΔV _{I-O}	I _o =0.5A	-	0.2	0.5	V
Ripple Rejection	NJM2386ADL3-33	RR V _{IN} =V _O +2V, e _{in} =0.5Vrms, f=120Hz	54	67	-	dB
	NJM2386ADL3-05		54	67	-	
	NJM2386ADL3-08		52	65	-	
	NJM2386ADL3-09		52	65	-	
	NJM2386ADL3-12		50	63	-	
ON Control Voltage	V _{CONT(ON)}		2.0(*2)	-	-	V
OFF Control Voltage	V _{CONT(OFF)}		-	-	0.4	V
ON Control Current	I _{CONT(ON)}	V _C =2.7V	10	30	50	μA
OFF Control Current	I _{CONT(OFF)}	V _C =0.4V	1	3	5	μA

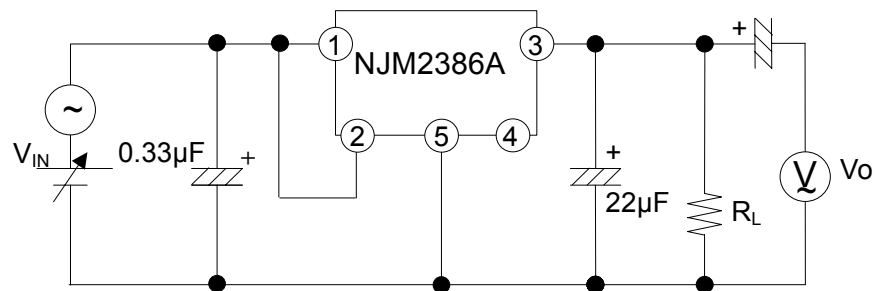
(*2): When ON/OFF CONTROL Terminal is open, Output Voltage is ON.

■ TEST CIRCUIT

- Standard Test Circuit



- Ripple Rejection Test Circuit

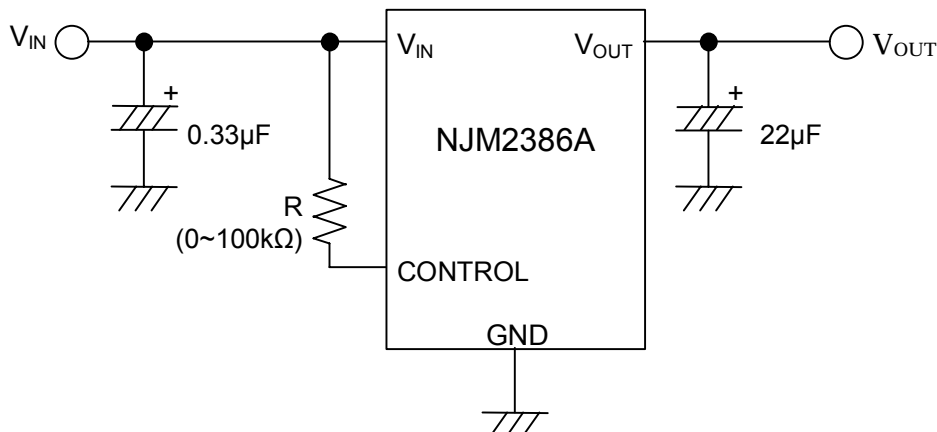


NJM2386A

www.DataSheet4U.com

■ TYPICAL APPLICATION

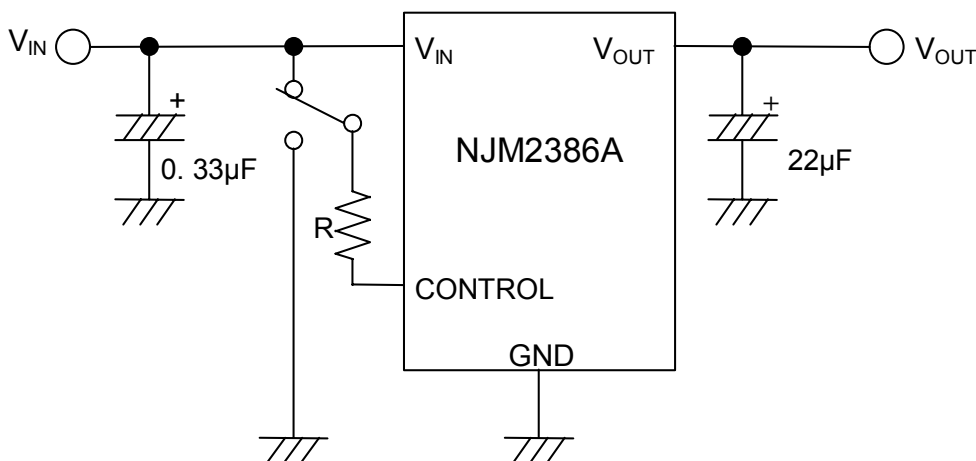
① In the case where ON/OFF Control is not required:



Connect control terminal to V_{IN} terminal.

The quiescent current can be reduced by using a resistance "R". Instead, it increases the minimum operating voltage. For further information, please refer to Figure "Output Voltage vs. Control Voltage".

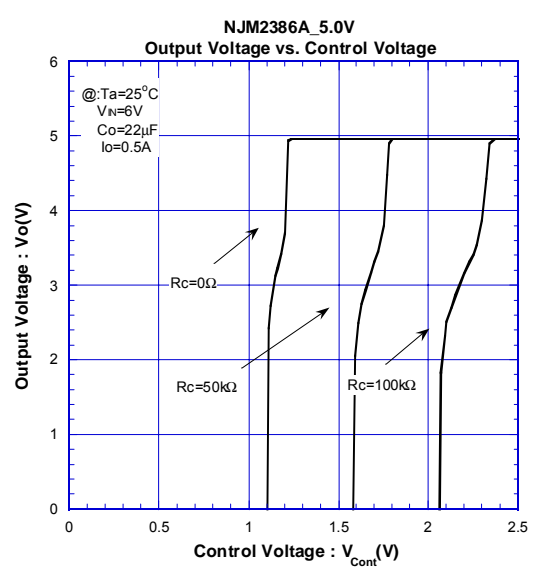
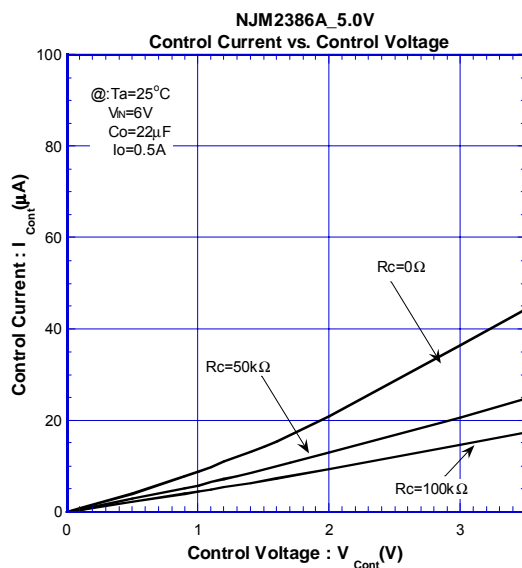
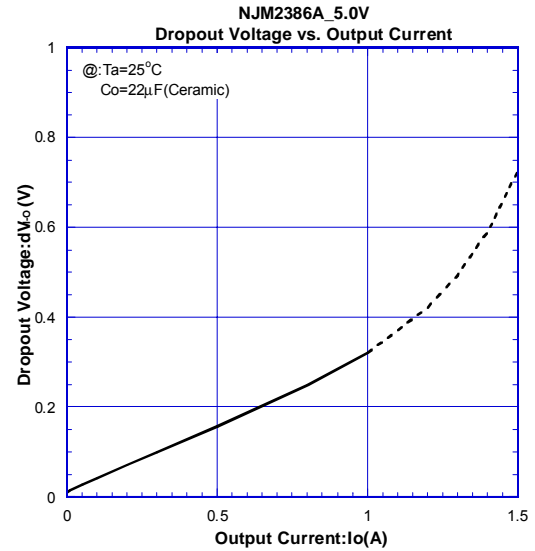
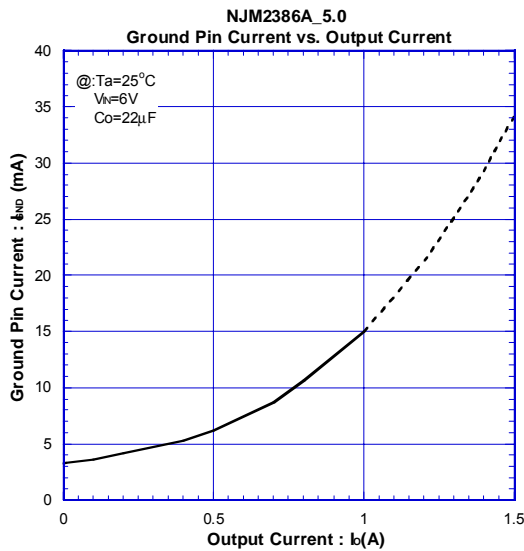
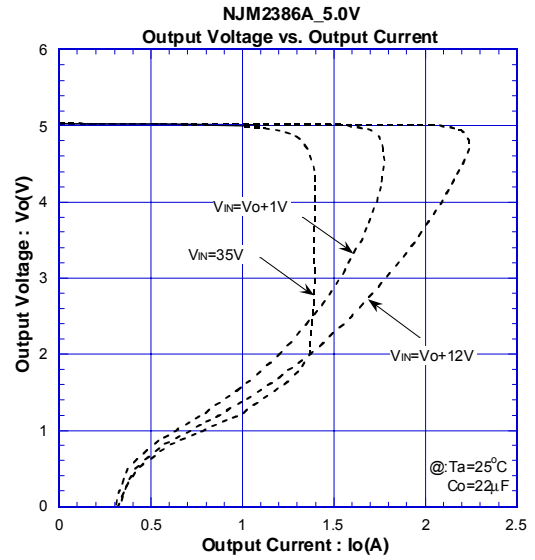
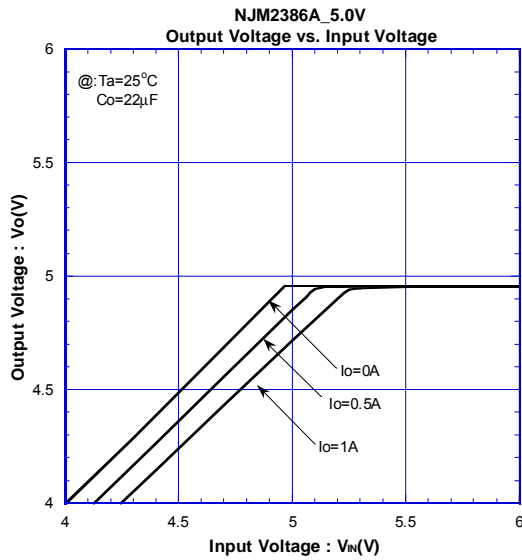
② In use of ON/OFF CONTROL:



State of control terminal:

- "H" → output is enabled.
- "L" or "open" → output is disabled.

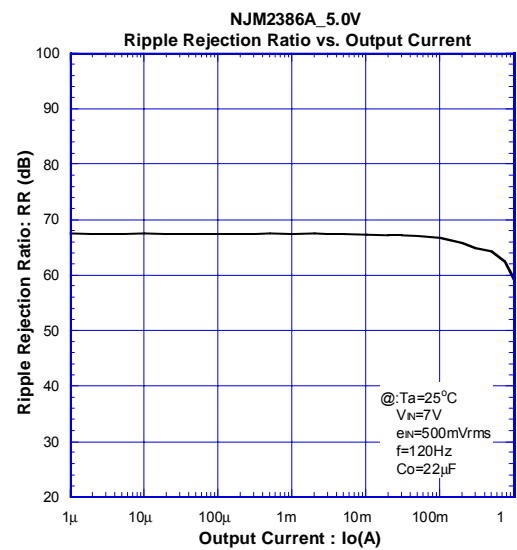
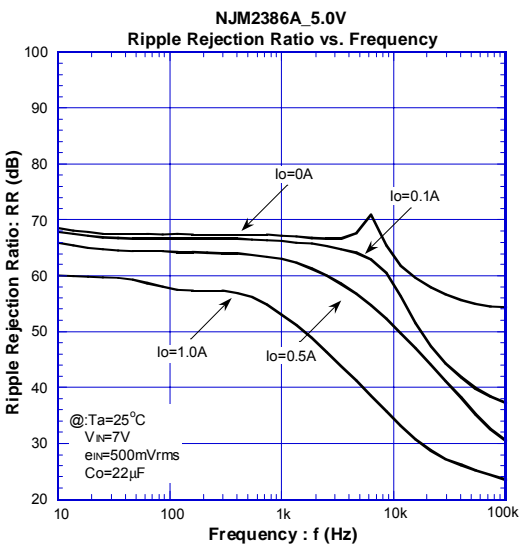
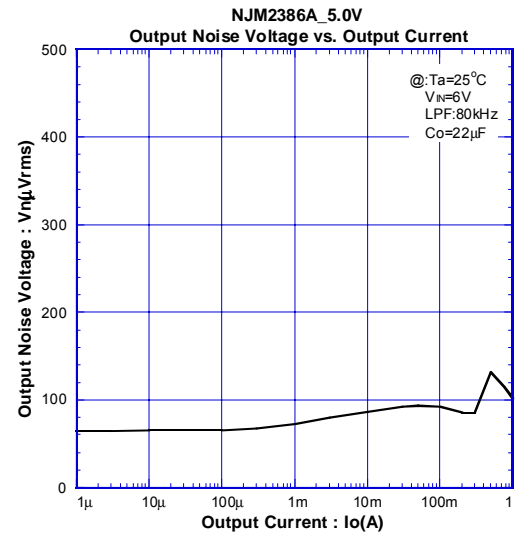
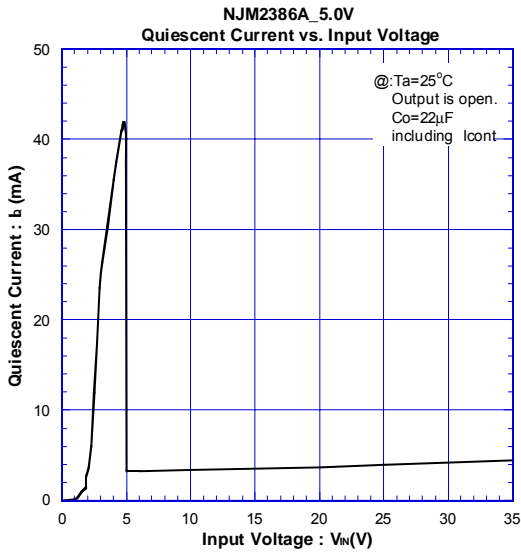
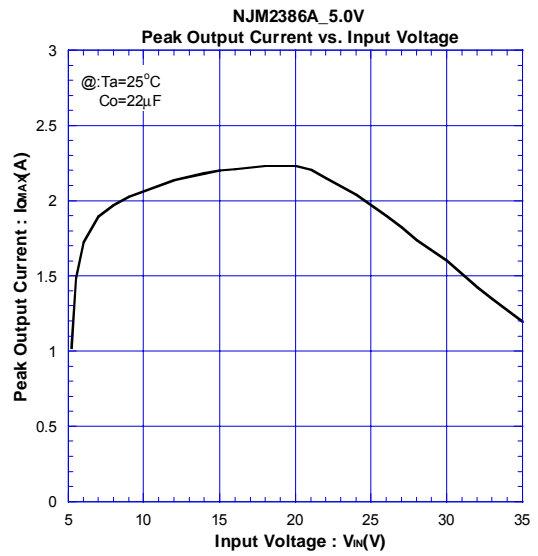
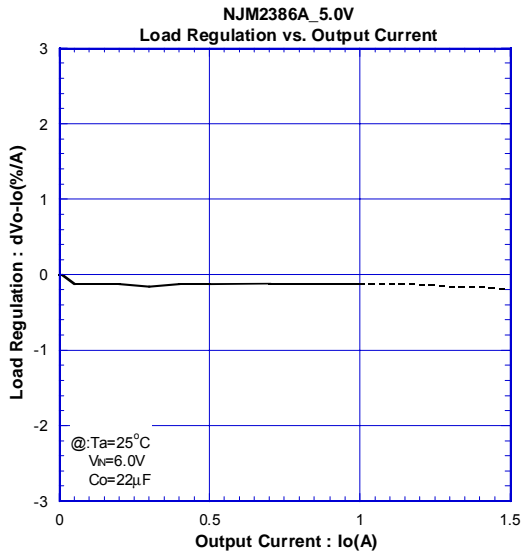
TYPICAL CHARACTERISTICS



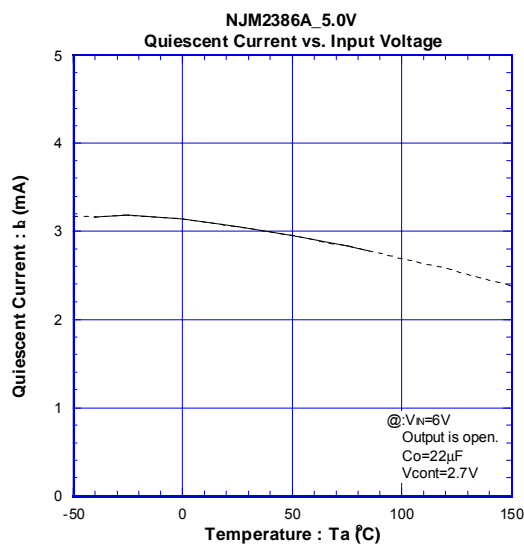
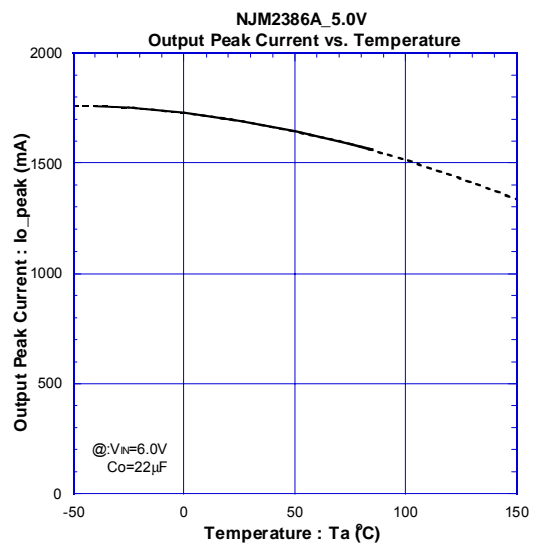
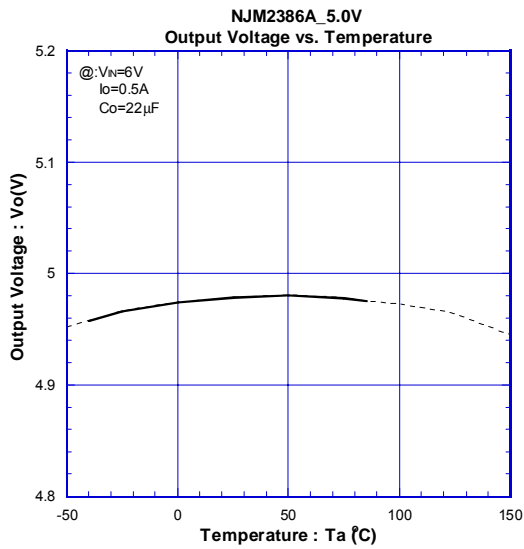
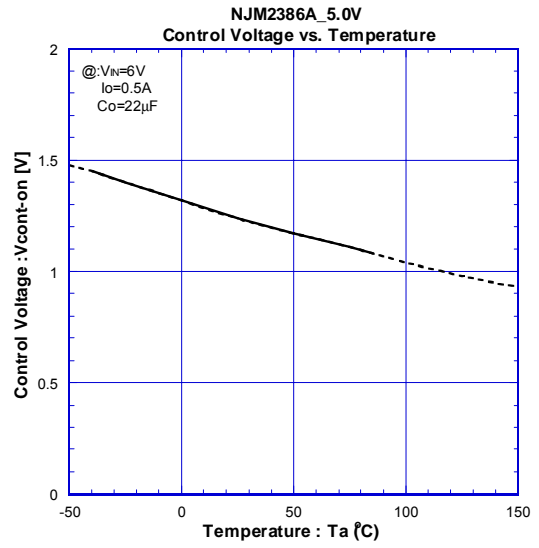
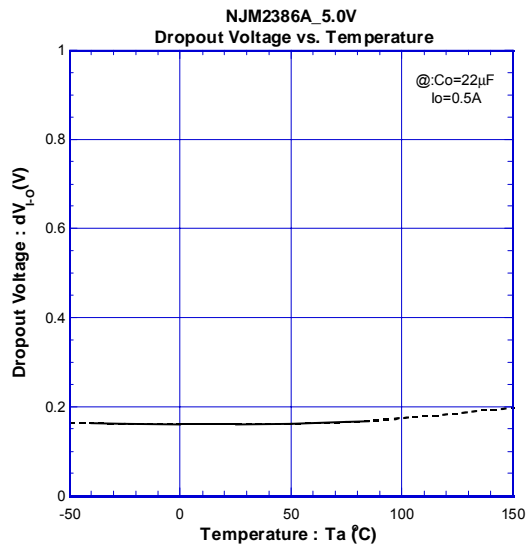
NJM2386A

www.DataSheet4U.com

TYPICAL CHARACTERISTICS



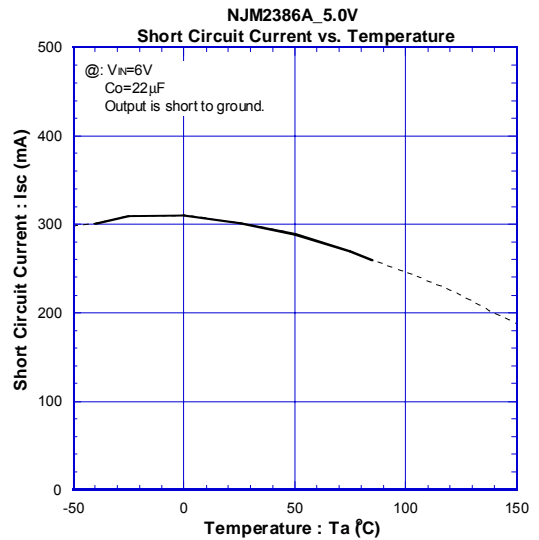
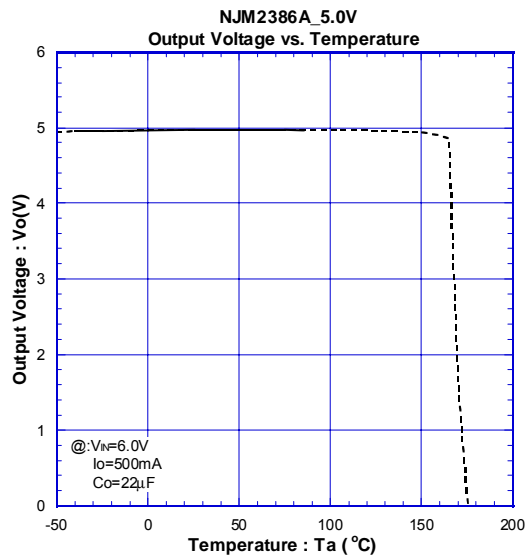
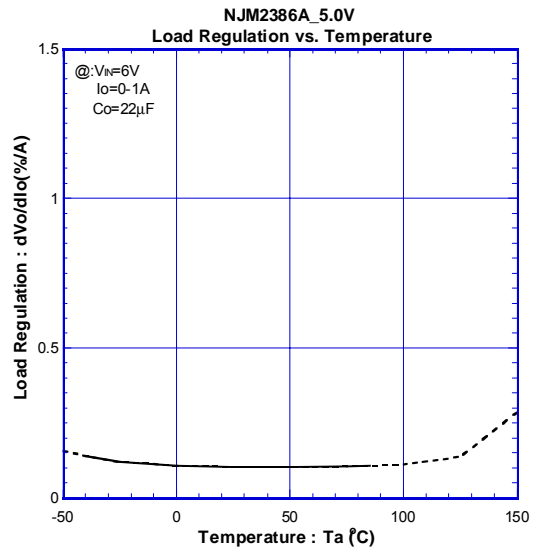
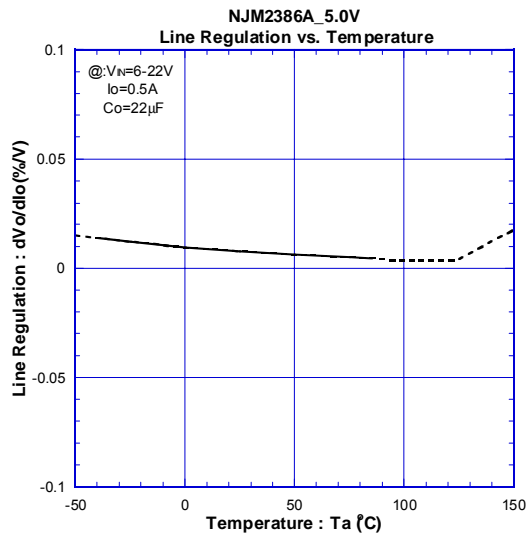
TYPICAL CHARACTERISTICS



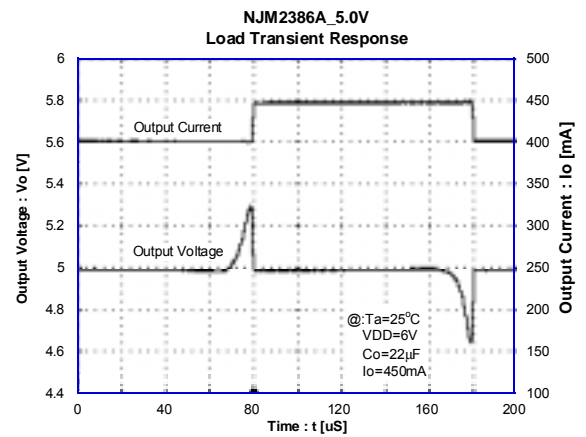
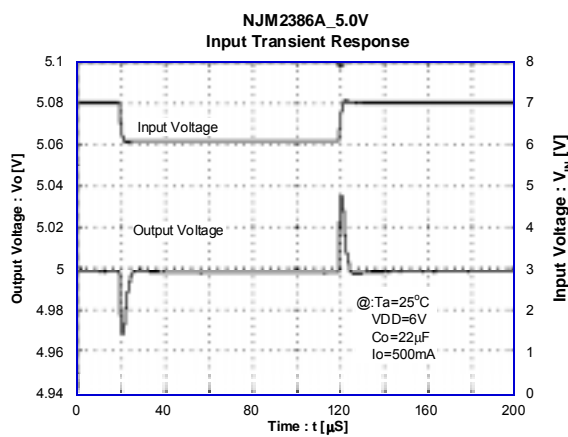
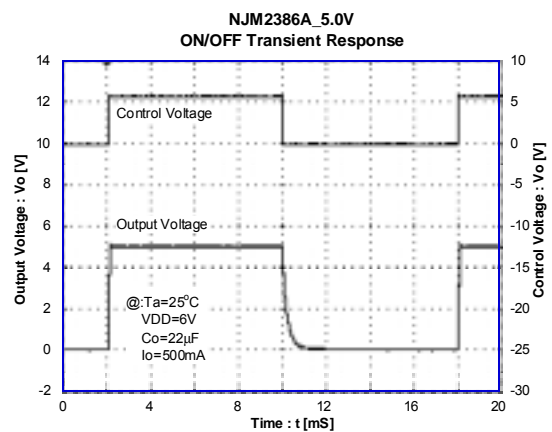
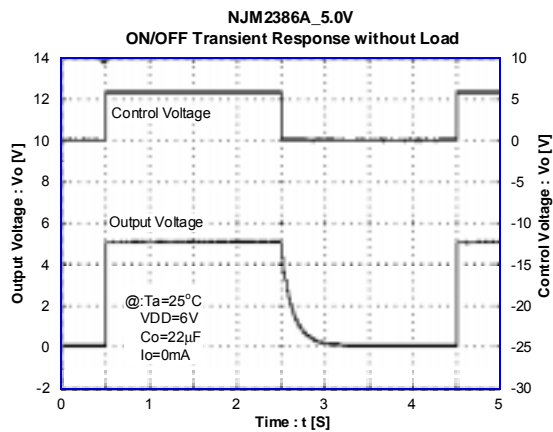
NJM2386A

www.DataSheet4U.com

TYPICAL CHARACTERISTICS



TYPICAL CHARACTERISTICS



[CAUTION]

The specifications on this databook are only given for information, without any guarantee as regards either mistakes or omissions. The application circuits in this databook are described only to show representative usages of the product and not intended for the guarantee or permission of any right including the industrial rights.