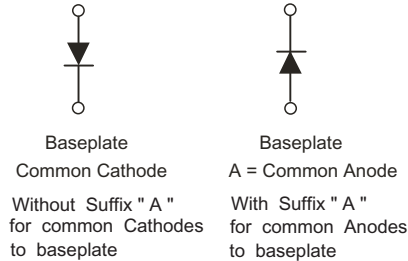


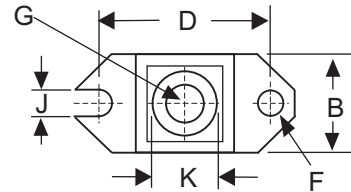
FAST RECOVERY DIODE MODULES TYPE

Features

- High Surge Capability
- Dual Diode Consturction
- Low Leakage Current
- Low Forward Voltage
- Types Up to 600V VRRM



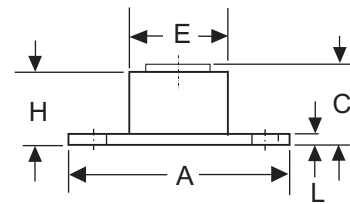
Package : NKF



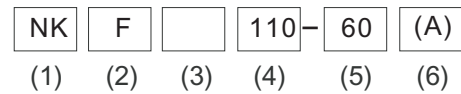
Maximum Ratings

- Operating Temperature : -55 °C to +150 °C
- Storage Temperature : -55 °C to +150 °C

Part Number	Maximum Recurrent Peak Reverse Voltage	Maximum RMS Voltage	Maximum DC Blocking Voltage
NKF110 - 60(A)	600 V	420 V	600 V



Ordering code



Electrical Characteristics

Average Forward Current (per leg)	$I_{F(AV)}$	110 A	$T_c=100^\circ\text{C}$
Peak Forward Surge Current (per leg)	I_{FSM}	600 A	8.3ms, half sine
Maximum Instantaneous Forward Voltage (per leg)	V_F	1.50 V	$I_F = 110\text{A}$ $T_j = 25^\circ\text{C}$
Maximum DC Reverse Current at Rated DC Blocking Voltage (per leg)	I_R	10 μA 1000 μA	$T_j = 25^\circ\text{C}$ $T_j = 125^\circ\text{C}$
Maximum (per leg) Reverse Recovery Time	t_{rr}	90 ns	$I_F = 0.5\text{A}$, $I_R = 1.0\text{A}$ $I_{RR} = 0.25\text{A}$
Maximum Thermal Resistance Junction to Case (per leg)	R_{thjc}	0.27 °C/W	
Maximum Terminal Torque	T	57 Kg-cm	
Maximum Mounting Base Torque	T	45 Kg-cm	

- (1) Module Type
- (2) for Fast Recovery diode
- (3) D - For dual terminals
Blank - single terminal
- (4) Maximum average forward current , A
- (5) Voltage code (code x 10 = VRRM)
- (6) Blank - For common cathodes to base plate
A - For common anodes to base plate

DIM	DIMENSIONS				NOTE
	INCHES		MM		
	MIN	MAX	MIN	MAX	
A	1.515	1.560	38.48	39.62	
B	.725	.775	18.42	19.69	
C	.595	.625	15.11	15.88	
D	1.182	1.192	30.02	30.28	
E	.745	.755	18.92	19.18	
F	.152	.160	3.86	4.061	\emptyset
G	1/4	- 20	UNC	- 2B	
H	.540	.580	13.72	14.73	
J	.156	.160	3.96	4.06	
K	.495	.505	12.57	12.83	\emptyset
L	.120	.130	3.05	3.30	

* Pulse Test : Pulse Width 300 usec , Duty Cycle 2 %

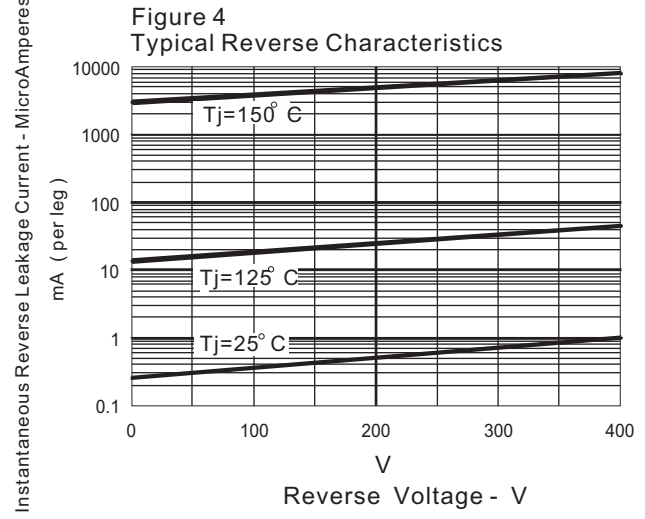
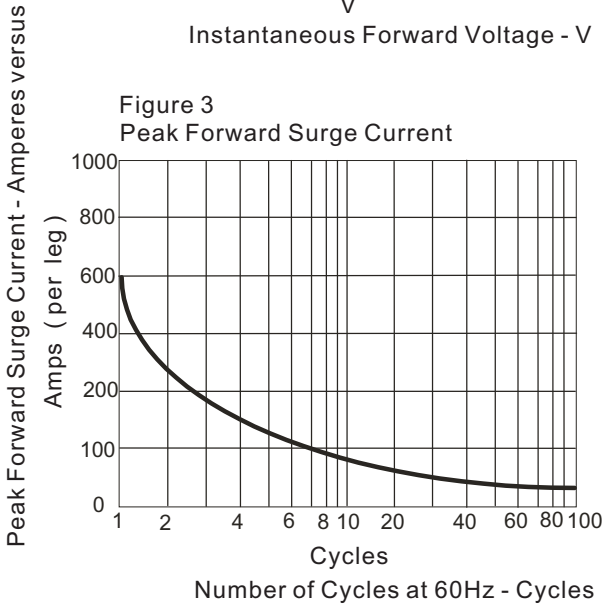
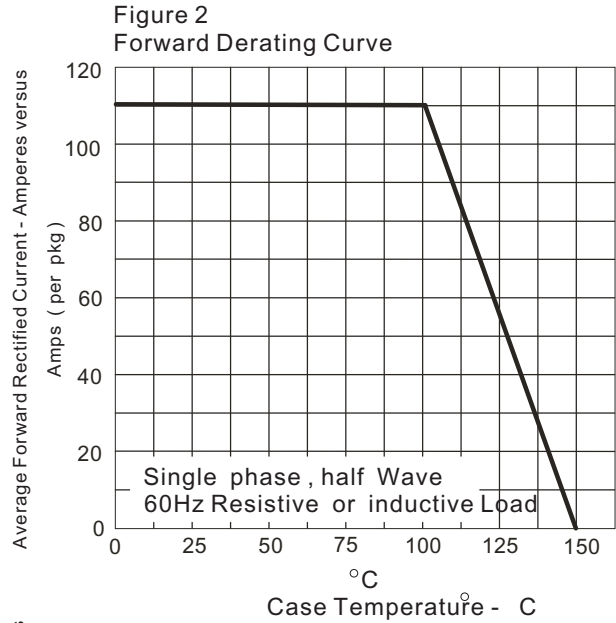
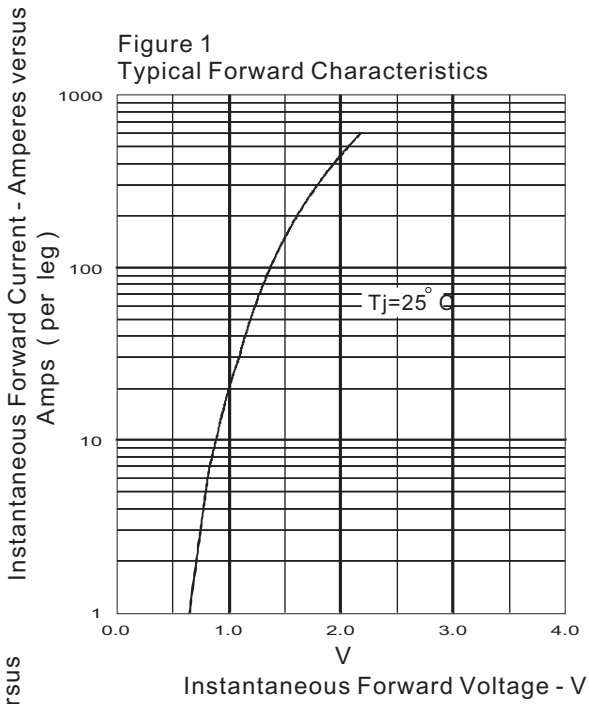


Figure 5 GR1 Test Circuit

