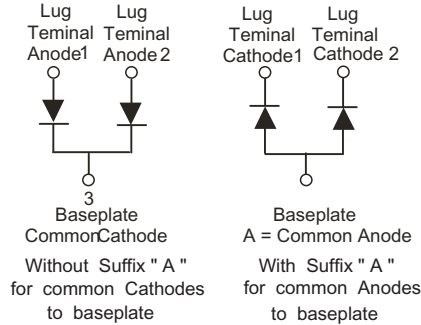


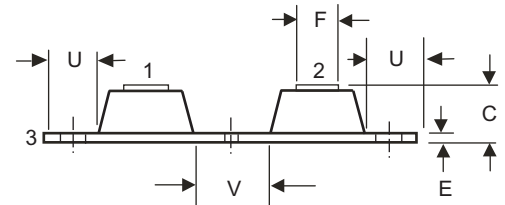
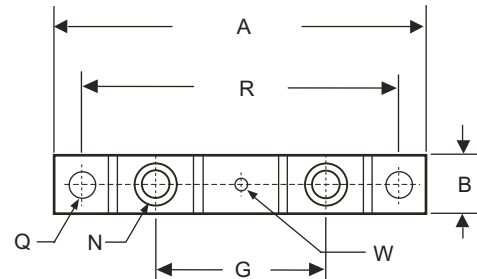
## FAST RECOVERY DIODE MODULES TYPE

### Features

- High Surge Capability
- Dual Diode Consturction
- Low Leakage Current
- Low Forward Voltage
- Types Up to 600V VRRM



Package : NKFD

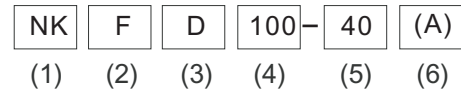


### Maximum Ratings

- Operating Temperature : -55 °C to +175 °C
- Storage Temperature : -55 °C to +150 °C

Part Number	Maximum Recurrent Peak Reverse Voltage	Maximum RMS Voltage	Maximum DC Blocking Voltage
NKFD100-40(A)	400V	280V	400 V
NKFD100-60(A)	600V	400V	600V

### Ordering code



### Electrical Characteristics

Average Forward Current (per leg)	$I_{F(AV)}$	50 A	$T_c=130^\circ\text{C}$
Peak Forward Surge Current (per leg)	$I_{FSM}$	400 A	8.3ms , half sine
Maximum Instantaneous Forward Voltage (per leg)	$V_F$	1.10 V	$I_{FM} = 100\text{A}$ $T_j = 25^\circ\text{C}$
Maximum DC Reverse Current at Rated DC Blocking Voltage (per leg)	$I_R$	5.0 uA 500 uA	$T_j = 25^\circ\text{C}$ $T_j = 125^\circ\text{C}$
Maximum (per leg) Reverse Recovery Time	$t_{rr}$	50 ns	$I_F = 0.5\text{A}$ , $I_R = 1.0\text{A}$ $IRR = 0.25\text{A}$
Maximum Thermal Resistance Junction to Case (per leg)	$R_{thjc}$	0.45 °C/W	
Maximum Terminal Torque	T	57 Kg-cm	
Maximum Mounting Base Torque	T	45 Kg-cm	

- (1) Module Type
- (2) for Fast Recovery diode
- (3) D - For dual terminals  
Blank - single terminal
- (4) Maximum average forward current , A
- (5) Voltage code ( code x 10 = VRRM )
- (6) Blank - For common cathodes to base plate  
A - For common anodes to base plate

DIM	DIMENSIONS				NOTE
	INCHES		MM		
	MIN	MAX	MIN	MAX	
A	----	3.360	----	92.20	
B	0.700	0.800	17.78	20.32	
C	----	0.650	----	16.51	
E	0.120	0.130	3.05	3.30	
F	0.490	0.510	12.45	12.95	
G	1.379	BSC	35.02	BSC	
H	----	----	----	----	
N	1/4 - 20 UNC FULL				
Q	0.275	0.290	6.99	7.37	2PL
R	3.150 BSC		80.01BSC		
U	0.600	----	15.24	----	
V	0.312	0.370	7.92	9.40	
W	0.180	0.195	4.57	4.95	

\* Pulse Test : Pulse Width 300 usec , Duty Cycle 2%

