

PRELIMINARY

NEC NEC LCD Technologies, Ltd.

TFT COLOR LCD MODULE

NL8060BC31-47D

31cm (12.1 Type)

SVGA

LVDS interface (1port)

PRELIMINARY DATA SHEET 

DOD-PP-0830 (6th edition)

This PRELIMINARY DATA SHEET is updated document from PRELIMINARY DATA SHEET DOD-PP-0802(5).

All information is subject to change without notice. Please confirm the sales representative before starting to design your system.

INTRODUCTION

The Copyright to this document belongs to NEC LCD Technologies, Ltd. (hereinafter called "NEC"). No part of this document will be used, reproduced or copied without prior written consent of NEC.

NEC does and will not assume any liability for infringement of patents, copyrights or other intellectual property rights of any third party arising out of or in connection with application of the products described herein except for that directly attributable to mechanisms and workmanship thereof. No license, express or implied, is granted under any patent, copyright or other intellectual property right of NEC.

Some electronic parts/components would fail or malfunction at a certain rate. In spite of every effort to enhance reliability of products by NEC, the possibility of failures and malfunction might not be avoided entirely. To prevent the risks of damage to death, human bodily injury or other property arising out thereof or in connection therewith, each customer is required to take sufficient measures in its safety designs and plans including, but not limited to, redundant system, fire-containment and anti-failure.

The products are classified into three quality grades: "**Standard**", "**Special**", and "**Specific**" of the highest grade of a quality assurance program at the choice of a customer. Each quality grade is designed for applications described below. Any customer who intends to use a product for application other than that of Standard quality grade is required to contact an NEC sales representative in advance.

The **Standard** quality grade applies to the products developed, designed and manufactured in accordance with the NEC standard quality assurance program, which are designed for such application as any failure or malfunction of the products (sets) or parts/components incorporated therein a customer uses are, directly or indirectly, free of any damage to death, human bodily injury or other property, like general electronic devices.

Examples: Computers, office automation equipment, communications equipment, test and measurement equipment, audio and visual equipment, home electronic appliances, machine tools, personal electronic equipment, industrial robots, etc.

The **Special** quality grade applies to the products developed, designed and manufactured in accordance with an NEC quality assurance program stricter than the standard one, which are designed for such application as any failure or malfunction of the products (sets) or parts/components incorporated therein a customer uses might directly cause any damage to death, human bodily injury or other property, or such application under more severe condition than that defined in the Standard quality grade without such direct damage.

Examples: Control systems for transportation equipment (automobiles, trains, ships, etc.), traffic control systems, anti-disaster systems, anti-crime systems, medical equipment not specifically designed for life support, safety equipment, etc.

The **Specific** quality grade applies to the products developed, designed and manufactured in accordance with the standards or quality assurance program designated by a customer who requires an extremely higher level of reliability and quality for such products.

Examples: Military systems, aircraft control equipment, aerospace equipment, nuclear reactor control systems, medical equipment/devices/systems for life support, etc.

The quality grade of this product is the "**Standard**" unless otherwise specified in this document.

CONTENTS

INTRODUCTION	2
1. OUTLINE.....	4
1.1 STRUCTURE AND PRINCIPLE	4
1.2 APPLICATION	4
1.3 FEATURES	4
2. GENERAL SPECIFICATIONS.....	5
3. BLOCK DIAGRAM.....	6
4. DETAILED SPECIFICATIONS.....	8
4.1 MECHANICAL SPECIFICATIONS	8
4.2 ABSOLUTE MAXIMUM RATINGS.....	8
4.3 ELECTRICAL CHARACTERISTICS.....	9
4.3.1 LCD panel signal processing board	9
4.3.2 Backlight lamp.....	10
4.3.3 Power supply voltage ripple.....	10
4.3.4 Fuse.....	10
4.4 POWER SUPPLY VOLTAGE SEQUENCE.....	11
4.4.1 LCD panel signal processing board	11
4.4.2 LED driver board (Option)	11
4.5 CONNECTIONS AND FUNCTIONS FOR INTERFACE PINS	12
4.5.1 LCD panel signal processing board	12
4.5.2 Backlight lamp.....	13
4.5.3 Positions of plug and socket	13
4.5.4 Connection between receiver and transmitter for LVDS	14
4.5.5 Input data mapping	17
4.6 DISPLAY COLORS AND INPUT DATA SIGNALS.....	18
4.6.1 Combinations between input data signals, FRC signal and MSL signal	18
4.6.2 16,777,216 colors.....	19
4.6.3 262,144 colors.....	20
4.7 DISPLAY POSITIONS	21
4.8 SCANNING DIRECTIONS	21
4.9 INPUT SIGNAL TIMINGS	22
4.9.1 Outline of input signal timings	22
4.9.2 Timing characteristics.....	23
4.9.3 Input signal timing chart.....	24
4.10 OPTICS.....	25
4.10.1 Optical characteristics	25
4.10.2 Definition of contrast ratio.....	26
4.10.3 Definition of luminance uniformity	26
4.10.4 Definition of response times	26
4.10.5 Definition of viewing angles.....	26
5. ESTIMATED LUMINANCE LIFETIME.....	27
6. RELIABILITY TESTS	28
7. PRECAUTIONS	29
7.1 MEANING OF CAUTION SIGNS	29
7.2 CAUTIONS	29
7.3 ATTENTIONS.....	29
7.3.1 Handling of the product	29
7.3.2 Environment.....	30
7.3.3 Characteristics.....	30
7.3.4 Other	30
8. OUTLINE DRAWINGS.....	31
8.1 FRONT VIEW	31
8.2 REAR VIEW	32
REVISION HISTORY	33

1. OUTLINE

1.1 STRUCTURE AND PRINCIPLE

Color LCD module NL8060BC31-47D is composed of the amorphous silicon thin film transistor liquid crystal display (a-Si TFT LCD) panel structure with driver LSIs for driving the TFT (Thin Film Transistor) array and a backlight.

The a-Si TFT LCD panel structure is injected liquid crystal material into a narrow gap between the TFT array glass substrate and a color-filter glass substrate.

Color (Red, Green, Blue) data signals from a host system (e.g. signal generator, etc.) are modulated into best form for active matrix system by a signal processing circuit, and sent to the driver LSIs which drive the individual TFT arrays.

The TFT array as an electro-optical switch regulates the amount of transmitted light from the backlight assembly, when it is controlled by data signals. Color images are created by regulating the amount of transmitted light through the TFT array of red, green and blue dots.

1.2 APPLICATION

- For industrial use

1.3 FEATURES

- Long life LED backlight type
- High luminance
- High contrast
- Wide viewing angle
- Wide temperature range
- LVDS interface
- Reversible-scan direction
- Selectable 8bit or 6bit digital signals for data of RGB
- Replaceable lamp holder for backlight

6

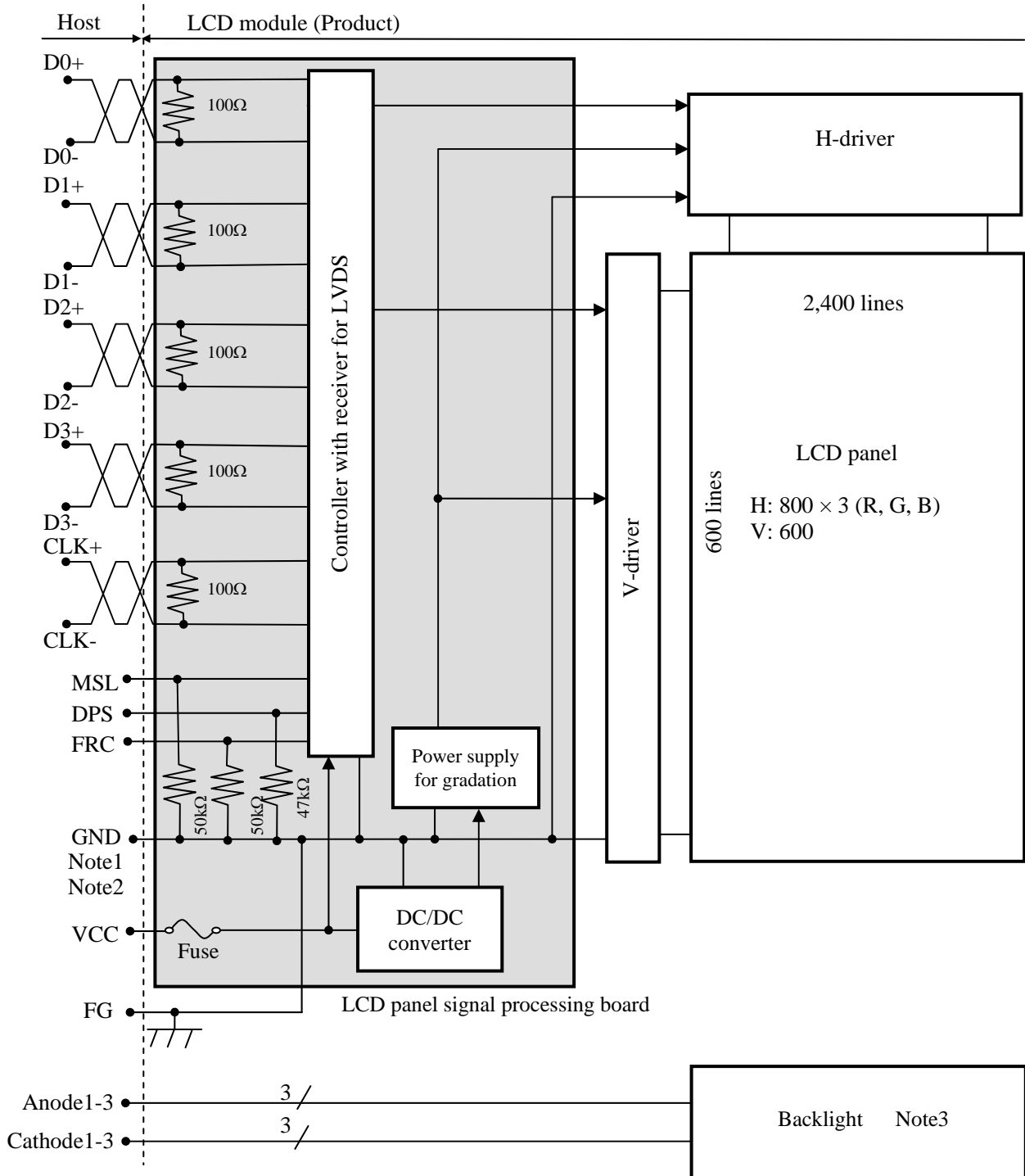
2. GENERAL SPECIFICATIONS

Display area	246.0 (H) × 184.5 (V) mm
Diagonal size of display	31cm (12.1 inches)
Drive system	a-Si TFT active matrix
Display color	16,777,216 colors (At 8-bit input, FRC terminal= High) 262,144 colors (At 6-bit input, FRC terminal= Low or Open)
Pixel	800 (H) × 600 (V) pixels
Pixel arrangement	RGB (Red dot, Green dot, Blue dot) vertical stripe
Dot pitch	0.1025 (H) × 0.3075 (V) mm
Pixel pitch	0.3075 (H) × 0.3075 (V) mm
Module size	280.0 (W) × 210.0 (H) × 9.1 (D) mm (typ.)
Weight	600 g (typ.)
Contrast ratio	900:1 (typ.)
Viewing angle	At the contrast ratio ≥10:1 <ul style="list-style-type: none"> • Horizontal: Right side 80° (typ.), Left side 80° (typ.) • Vertical: Up side 80° (typ.), Down side 80° (typ.)
Designed viewing direction	At DPS= Low or Open: Normal scan <ul style="list-style-type: none"> • Viewing direction without image reversal: Up side (12 o'clock) • Viewing direction with contrast peak: Down side (6 o'clock) • Viewing angle with optimum grayscale ($\gamma \approx 2.2$): Normal axis (perpendicular)
Polarizer surface	Antiglare
Polarizer pencil-hardness	3H (min.) [by JIS K5400]
Color gamut	At LCD panel center 40% (typ.) [against NTSC color space]
Response time	$T_{on} + T_{off}$ (10% ← → 90%) 18 ms (typ.)
Luminance	At $I_L = 50mA/One\ circuit$ 450 cd/m ² (typ.)
Signal system	LVDS 1port (Receiver: THC63LVDF84B, Thine Electronics Inc. or equivalent) [8bit/6bit digital signals for data of RGB colors, Dot clock (CLK), Data enable (DE)]
Power supply voltage	LCD panel signal processing board: 3.3V
Backlight	LED backlight type: <div style="display: flex; justify-content: space-between; align-items: center;"> <div style="border-left: 1px solid black; border-right: 1px solid black; padding: 0 10px;"> Replaceable part • Lamp holder set: Type No. 121LHS29 </div> <div style="font-size: 2em;">}</div> </div> <div style="display: flex; justify-content: space-between; align-items: center; margin-top: 10px;"> <div style="border-left: 1px solid black; border-right: 1px solid black; padding: 0 10px;"> Recommended part (Option) • LED driver board :Type No. 121PW01F </div> <div style="font-size: 2em;">}</div> </div>
Power consumption	At $I_L = 50mA/One\ circuit$, Checkered flag pattern (4.9) W (typ.)

6

6

3. BLOCK DIAGRAM



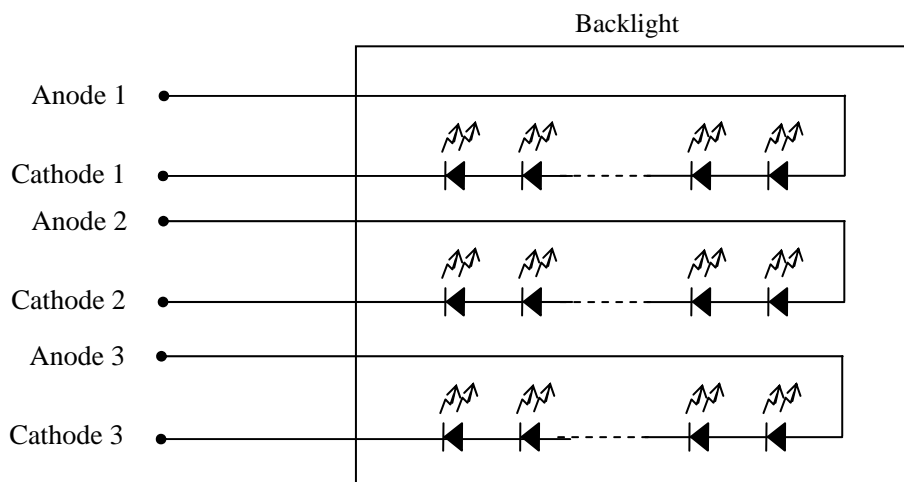
Note1: Relations between GND (Signal ground), FG (Frame ground) in the LCD module are as follows.

GND - FG	Connected
----------	-----------

Note2: GND and FG must be connected to customer equipment's ground, and it is recommended that these grounds are connected together in customer equipment.

PRELIMINARY

Note3: Backlight in detail



4. DETAILED SPECIFICATIONS

4.1 MECHANICAL SPECIFICATIONS

Parameter	Specification	Unit
Module size	280.0 ± 0.5 (W) × 210.0 ± 0.5 (H) × 9.1 ± 0.5 (D) Note1	mm
Display area	246.0 (H) × 184.5 (V) Note1	mm
Weight	600 (typ.), 630 (max.)	g

Note1: See "8. OUTLINE DRAWINGS".

4.2 ABSOLUTE MAXIMUM RATINGS

Parameter		Symbol	Rating	Unit	Remarks
Power supply voltage	LCD panel signal processing board	VCC	-0.3 to +4.0	V	-
Input voltage for signals	Display signals Note1	VD	-0.3 to VCC+0.3 and -0.3 to +4.0	V	
	Function signals Note2	VF			
Backlight	Forward current	IL	TBD	mA	per one circuit
	Forward voltage	VL	50	V	per one circuit
Storage temperature		Tst	-30 to +80	°C	-
Operating temperature	Front surface	TopF	-30 to +80	°C	Note3
	Rear surface	TopR	-30 to +80	°C	Note4
Relative humidity Note5	RH		≤ 95	%	Ta ≤ 40°C
			≤ 85	%	40°C < Ta ≤ 50°C
			≤ 55	%	50°C < Ta ≤ 60°C
			≤ 36	%	60°C < Ta ≤ 70°C
Absolute humidity Note5		AH	≤ 70 Note6	g/m ³	Ta > 70°C

Note1: D0+/-, D1+/-, D2+/-, D3+/-, CLK+/-

Note2: DPS, FRC, MSL

Note3: Measured at LCD panel surface (including self-heat)

Note4: Measured at LCD module's rear shield surface (including self-heat)

Note5: No condensation

Note6: Water amount at Ta= 70°C and RH= 36%

4.3 ELECTRICAL CHARACTERISTICS

4.3.1 LCD panel signal processing board

(Ta= 25°C)

Parameter	Symbol	min.	typ.	max.	Unit	Remarks	
Power supply voltage	VCC	3.0	3.3	3.6	V	-	
Power supply current	ICC	-	400 Note1	600 Note2	mA	at VCC= 3.3V	
Permissible ripple voltage	VRP	-	-	100	mVp-p	for VCC	
Differential input threshold voltage	High	VTH	-	-	+100	mV	at VCM= 1.2V Note3
	Low	VTL	-100	-	-	mV	
Terminating resistance	RT	-	100	-	Ω	-	
Input voltage for DPS, FRC and MSL signals	High	VFH	0.7VCC	-	VCC	V	CMOS level
	Low	VFL	0	-	0.3VCC	V	
Input current for FRC and MSL signals	High	IFH	-	-	300	μA	-
	Low	IFL	-300	-	-	μA	

Note1: Checkered flag pattern [by EIAJ ED-2522]

Note2: Pattern for maximum current

Note3: Common mode voltage for LVDS receiver

4.3.2 Backlight lamp

(Ta= 25°C, Note1, Note2)

Parameter	Symbol	min.	typ.	max.	Unit	Remarks
Forward current	IL	-	50.0	55.0	mA	-
Forward Voltage	VL	21.2	(24.0)	27.2	V	Ta= +25°C at IL= 50mA /One circuit
		(19.28)	-	-	V	Ta= +80°C at IL= 50mA /One circuit
		-	-	29.84	V	Ta= -30°C at IL= 50mA /One circuit
		-	-	30.56	V	Ta= -30°C at IL= 55mA /One circuit

Note1: Please drive with constant current.

Note2: The Luminance uniformity may be changed depending on the current variation amongst 3 circuits.
It is recommended that the current value difference amongst circuits is less than 5%.

4.3.3 Power supply voltage ripple

This product works, even if the ripple voltage levels are beyond the permissible values as following the table, but there might be noise on the display image.

Power supply voltage	Ripple voltage (Measure at input terminal of power supply)	Note1	Unit
VCC	3.3V	≤ 100	mVp-p

Note1: The permissible ripple voltage includes spike noise.

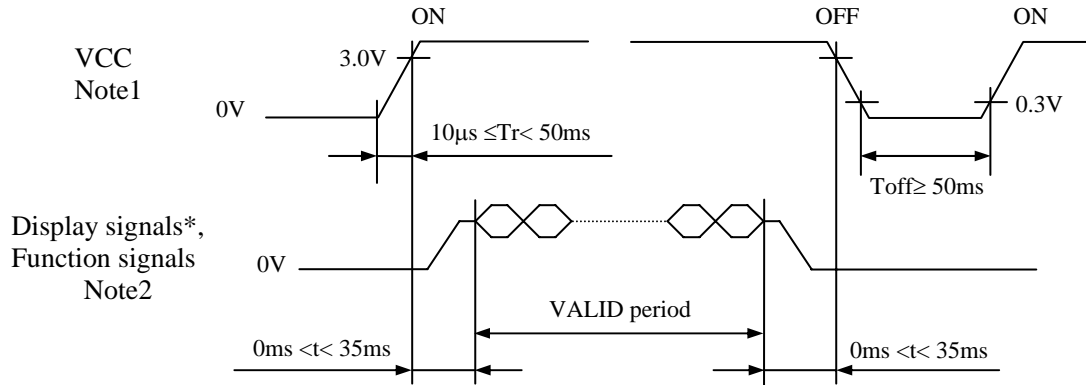
4.3.4 Fuse

Parameter	Fuse		Rating	Fusing current	Remarks
	Type	Supplier			
VCC	FCC16202AB	KAMAYA ELECTRIC Co., Ltd	2.0A	4.0A	Note1
			32V		

Note1: The power supply capacity should be more than the fusing current. If it is less than the fusing current, the fuse may not blow in a short time, and then nasty smell, smoke and so on may occur.

4.4 POWER SUPPLY VOLTAGE SEQUENCE

4.4.1 LCD panel signal processing board



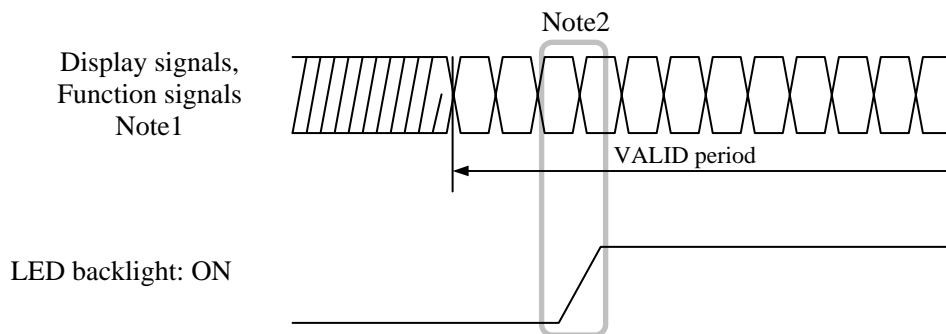
* These signals should be measured at the terminal of 100Ω resistance.

Note1: In terms of voltage variation (voltage drop) while VCC rising edge is below 3.0V, a protection circuit may work, and then this product may not work.

Note2: Display signals (D0+/-, D1+/-, D2+/-, D3+/- and CLK+/-) and function signals (DPS, FRC and MSL) must be Low or High-impedance, exclude the VALID period (See above sequence diagram), in order to avoid that internal circuits is damaged.

If some of display and function signals of this product are cut while this product is working, even if the signal input to it once again, it might not work normally. VCC should be cut when the display and function signals are stopped.

4.4.2 LED driver board (Option)



Note1: These are the display and function signals for LCD panel signal processing board.

Note2: The backlight should be turned on within the valid period of display and function signals, in order to avoid unstable data display.

PRELIMINARY

4.5 CONNECTIONS AND FUNCTIONS FOR INTERFACE PINS

4.5.1 LCD panel signal processing board

CN1 socket (LCD module side): FI-SE20P-HFE (Japan Aviation Electronics Industry Limited (JAE))
 Adaptable plug: FI-S20S (Japan Aviation Electronics Industry Limited (JAE))

Pin No.	Symbol	Signal	Input data signal: 8bit		Input data signal: 6bit	Remarks	
			MAP A	MAP B			
1	A	D3+	Pixel data	R0-R1,G0-G1,B0-B1	R6-R7,G6-G7,B6-B7	-	Note1, Note2
	B	GND	Ground	-		Ground	Note3
2	A	D3-	Pixel data	R0-R1,G0-G1,B0-B1	R6-R7,G6-G7,B6-B7	-	Note1, Note2
	B	GND	Ground	-		Ground	Note3
3	DPS	Selection of scan direction	High : Reverse scan Low or Open : Normal scan				Note4
4	FRC	Selection of the number of colors	High		Low or Open		Note1 Note5
5	GND	Ground	Ground				Note3
6	CLK+	Pixel clock	Pixel clock				Note2
7	CLK-						
8	GND	Ground	Ground				Note3
9	D2+	Pixel data	B4-B7,DE	B2-B5,DE			Note2
10	D2-						
11	GND	Ground	Ground				Note3
12	D1+	Pixel data	G3-G7,B2-B3	G1-G5,B0-B1			Note2
13	D1-						
14	GND	Ground	Ground				Note3
15	D0+	Pixel data	R2-R7,G2	R0-R5,G0			Note2
16	D0-						
17	GND	Ground	Ground				Note3
18	MSL	Selection of LVDS input map	Low	High	Low		Note5
19	VCC	Power supply	Power supply				Note3
20	VCC						

Note1: See "4.6 DISPLAY COLORS AND INPUT DATA SIGNALS".

Note2: Twist pair wires with 100Ω (Characteristic impedance) should be used between LCD panel signal processing board and LVDS transmitter.

Note3: All GND and VCC terminals should be used without any non-connected lines.

Note4: See "4.8 SCANNING DIRECTIONS".

Note5: See "4.5.4 Connection between receiver and transmitter for LVDS".

PRELIMINARY

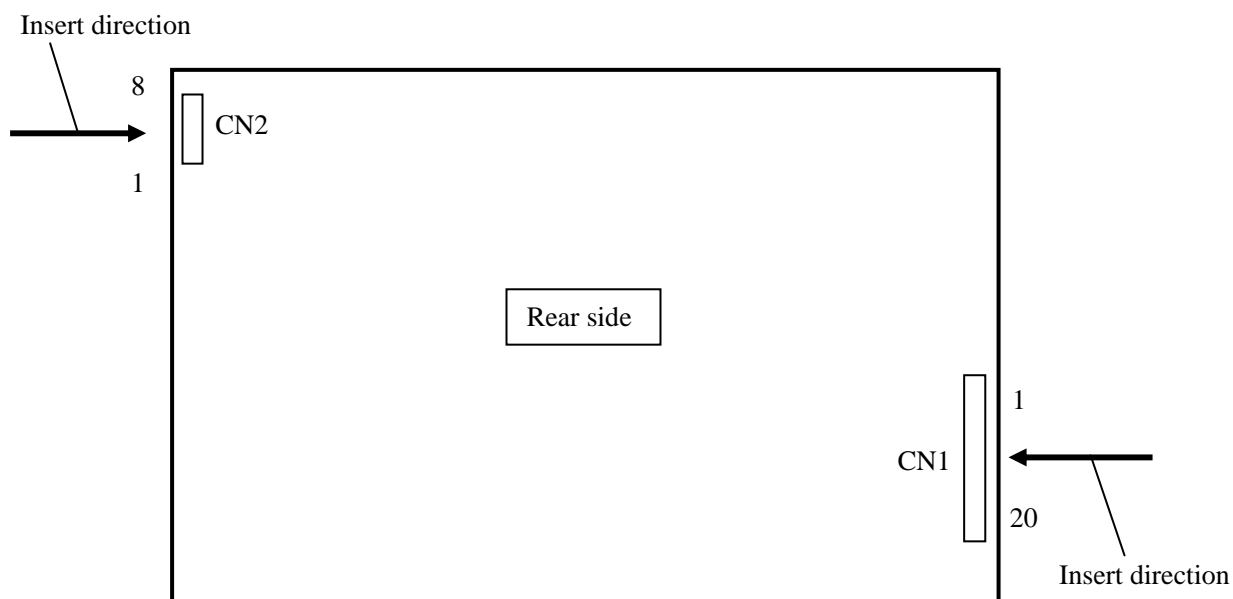
4.5.2 Backlight lamp

CN2 plug (LCD module side): SM08B-SRSS-TB (J.S.T. Mfg. Co., Ltd.)

Adaptable socket: SHR-8V-S, SHR-8V-S-B (J.S.T. Mfg. Co., Ltd.)

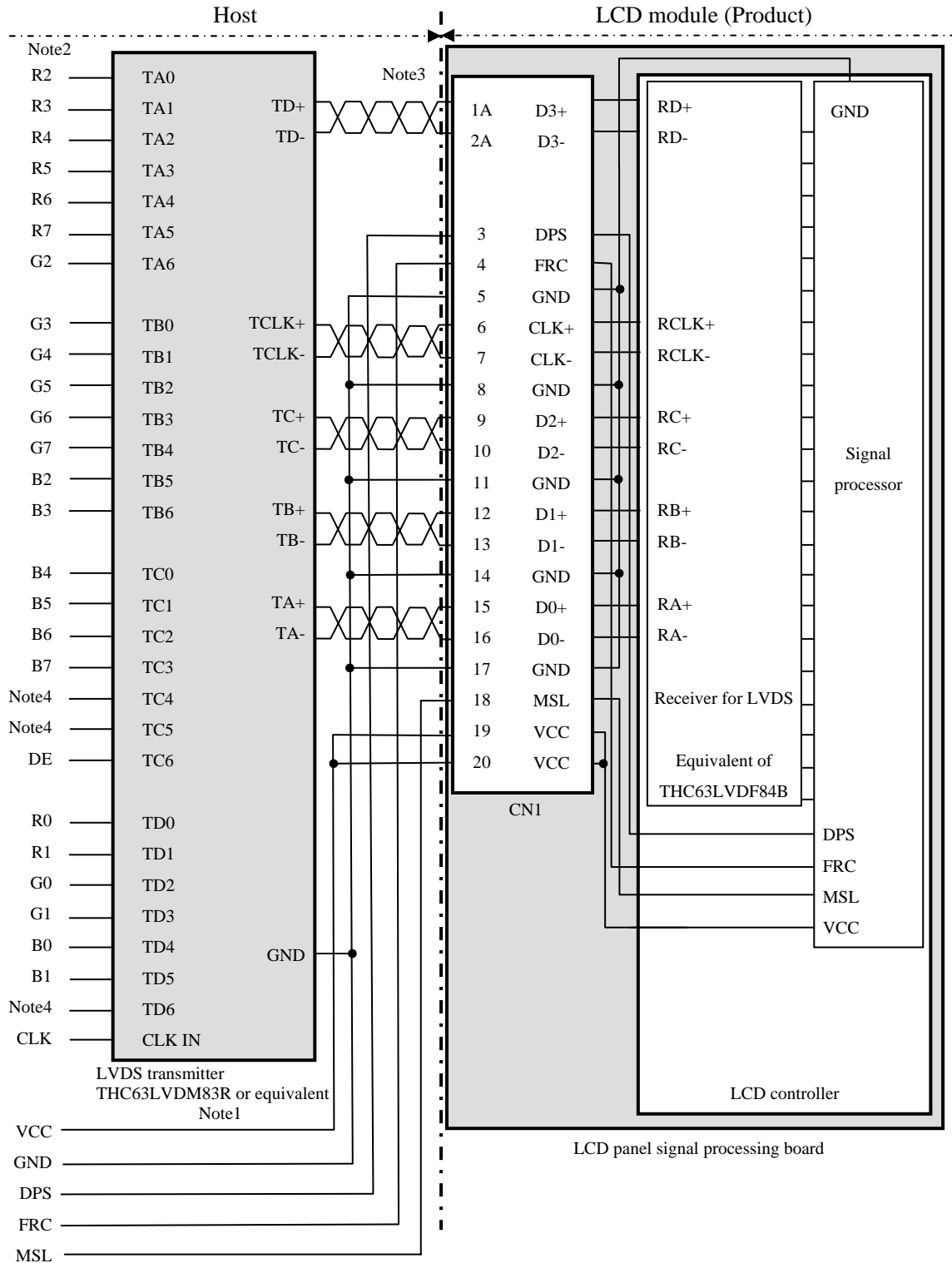
Pin No.	Symbol	Signal	Remarks
1	A1	Anode1	-
2	K1	Cathode1	-
3	A2	Anode2	-
4	K2	Cathode2	-
5	A3	Anode3	-
6	K3	Cathode3	-
7	N.C	-	Keep this pin Open.
8	N.C	-	Keep this pin Open.

4.5.3 Positions of plug and socket



4.5.4 Connection between receiver and transmitter for LVDS

(1) Input data signal: 8bit, MAP A



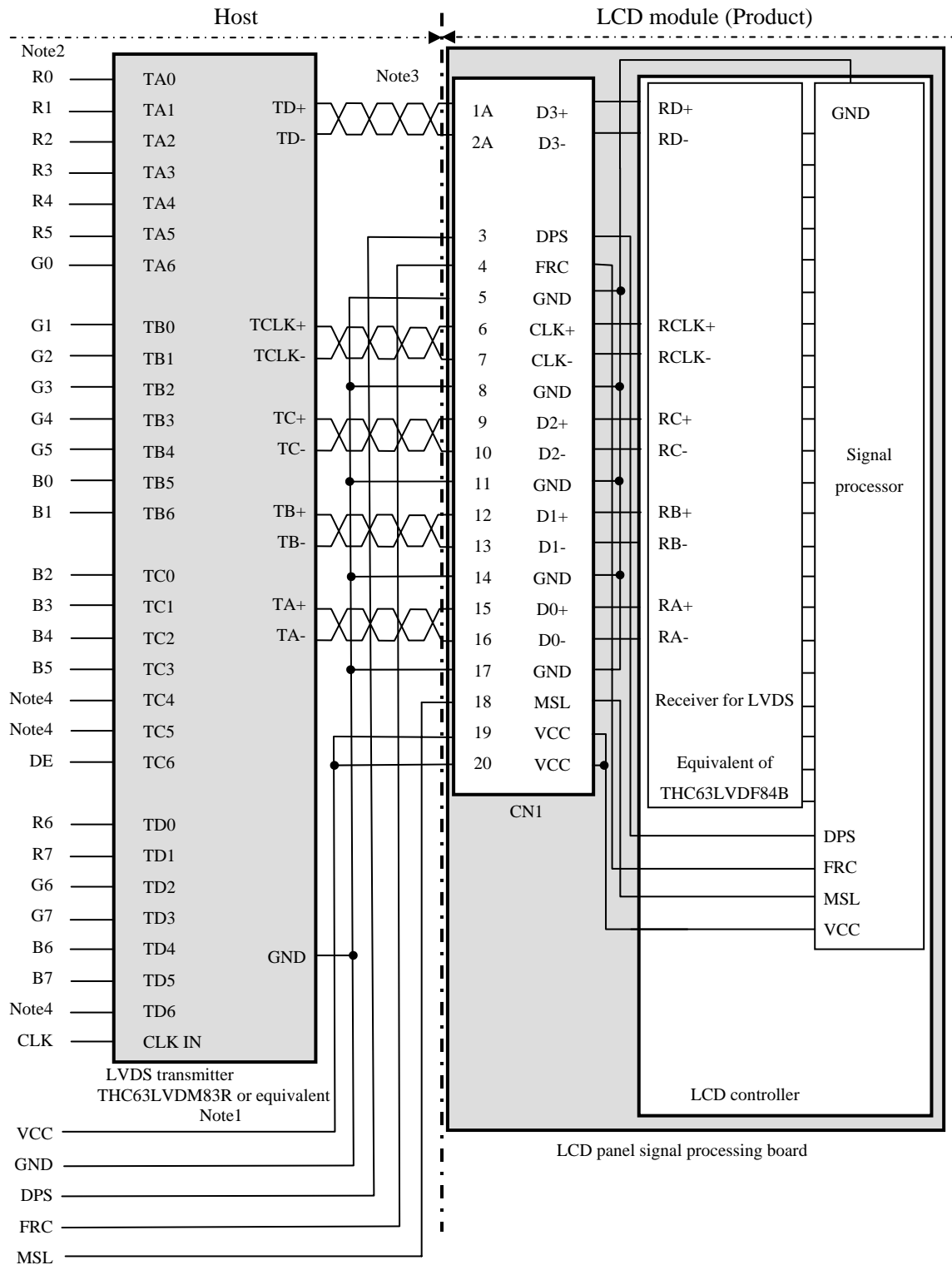
Note1: Recommended transmitter: THC63LVDM83R (THine Electronics Inc.) or equivalent

Note2: LSB (Least Significant Bit) – R0, G0, B0 MSB (Most Significant Bit) – R7, G7, B7

Note3: Twist pair wires with 100Ω (Characteristic impedance) should be used between LCD panel signal processing board and LVDS transmitter.

Note4: Input signals to TC4, TC5 and TD6 are not used inside the product, but do not keep TC4, TC5 and TD6 open to avoid noise problem.

(2) Input data signal: 8bit, MAP B



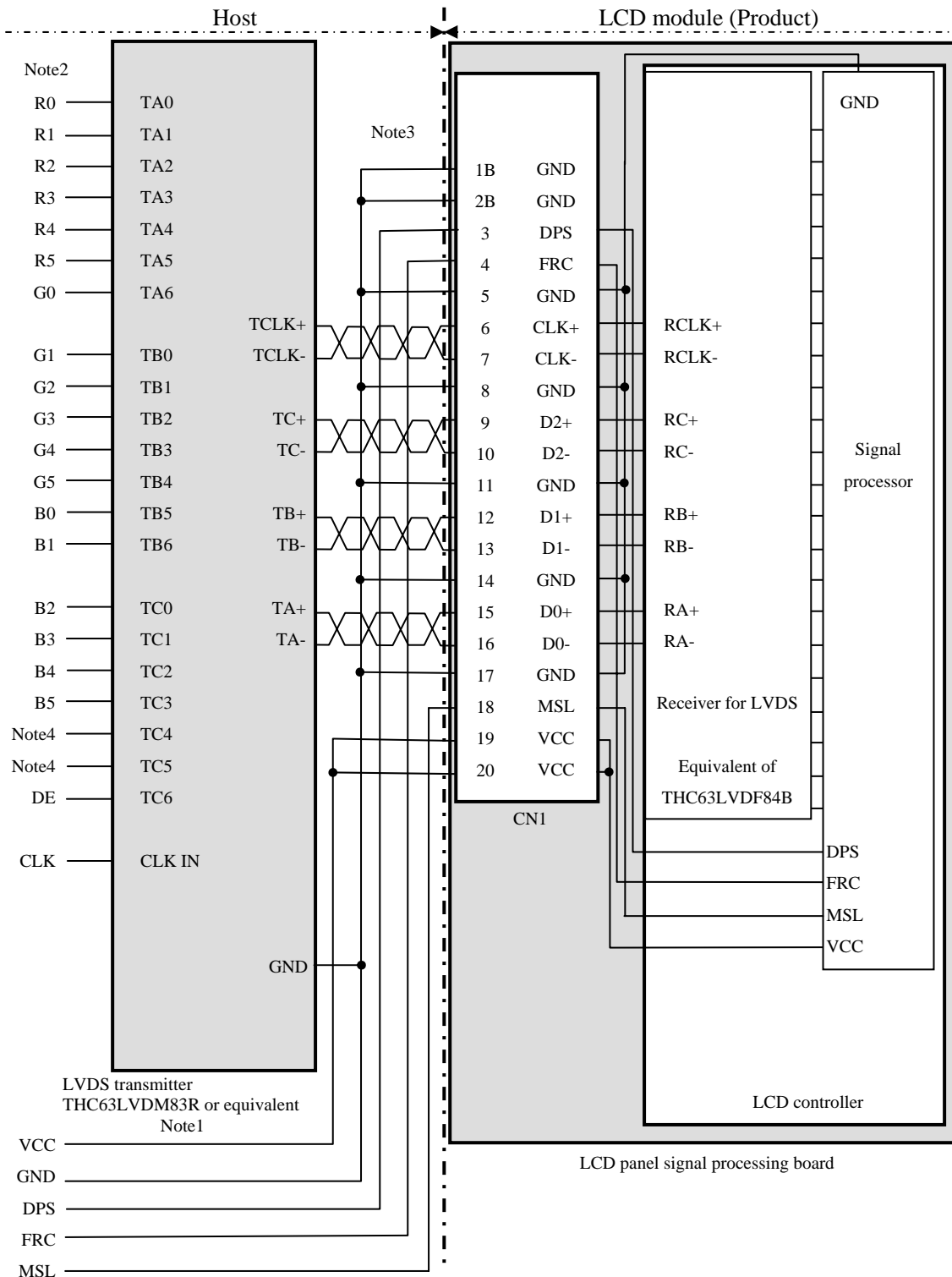
Note1: Recommended transmitter: THC63LVDM83R (THine Electronics Inc.) or equivalent

Note2: LSB (Least Significant Bit) – R0, G0, B0 MSB (Most Significant Bit) – R7, G7, B7

Note3: Twist pair wires with 100Ω (Characteristic impedance) should be used between LCD panel signal processing board and LVDS transmitter.

Note4: Input signals to TC4, TC5 and TD6 are not used inside the product, but do not keep TC4, TC5 and TD6 open to avoid noise problem.

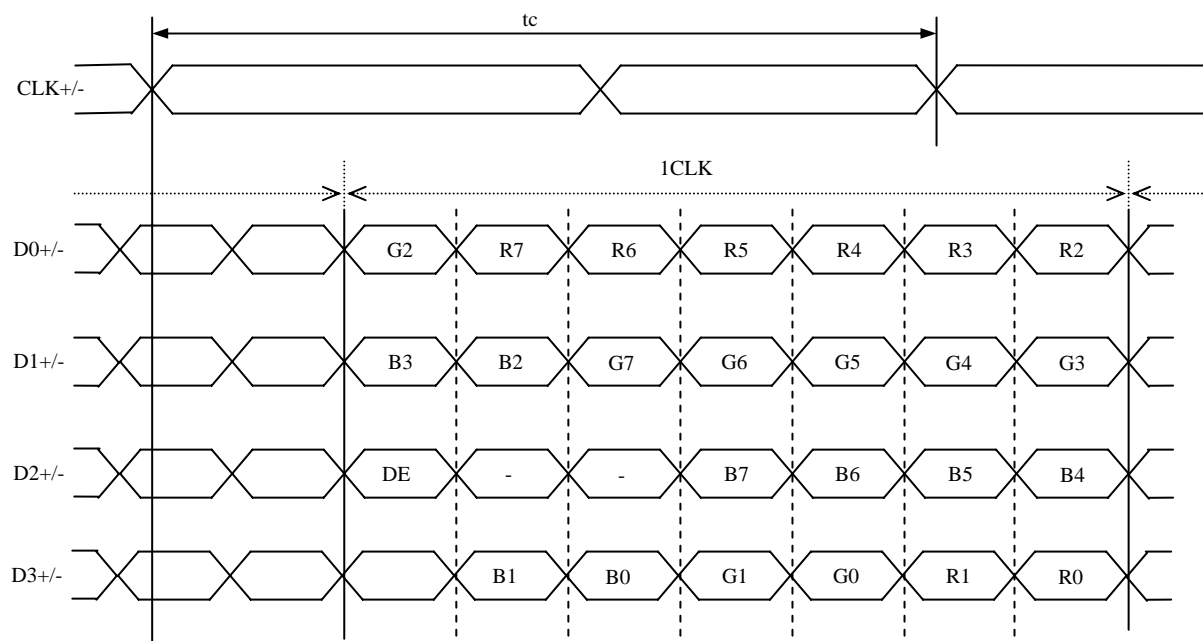
(3) Input data signal: 6bit



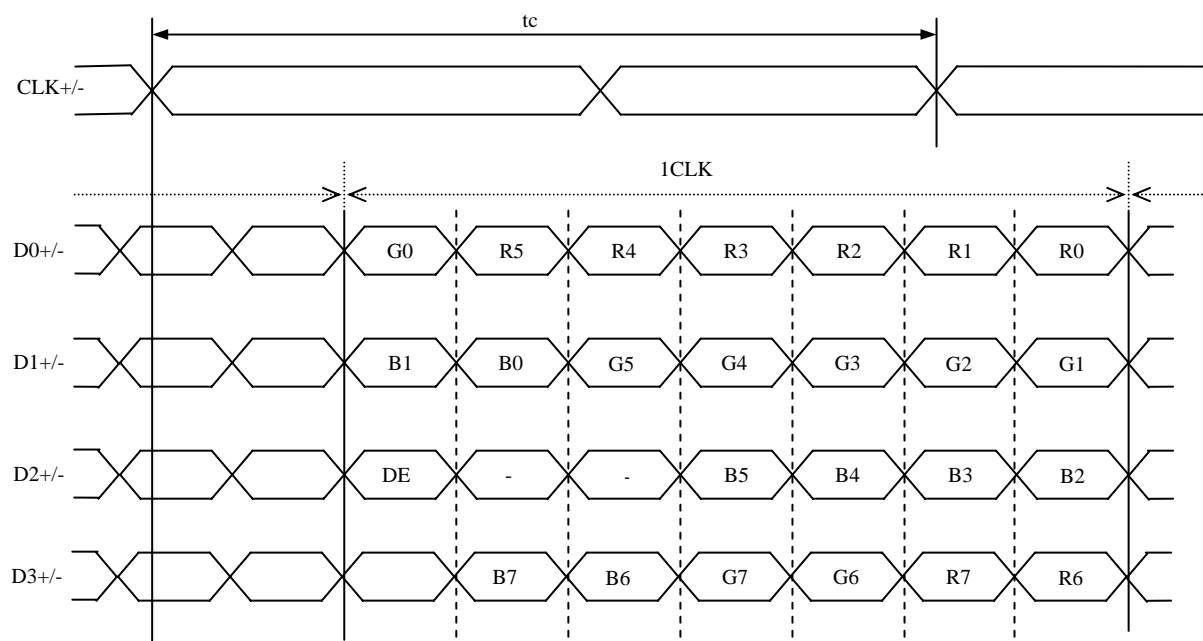
- Note1: Recommended transmitter THC63LVDM83R (THine Electronics Inc.) or equivalent
- Note2: LSB (Least Significant Bit) – R0, G0, B0 MSB (Most Significant Bit) – R5, G5, B5
- Note3: Twist pair wires with 100Ω (Characteristic impedance) should be used between LCD panel signal processing board and LVDS transmitter.
- Note4: Input signals to TC4 and TC5 are not used inside the product, but do not keep TC4 and TC5 open to avoid noise problem.

4.5.5 Input data mapping

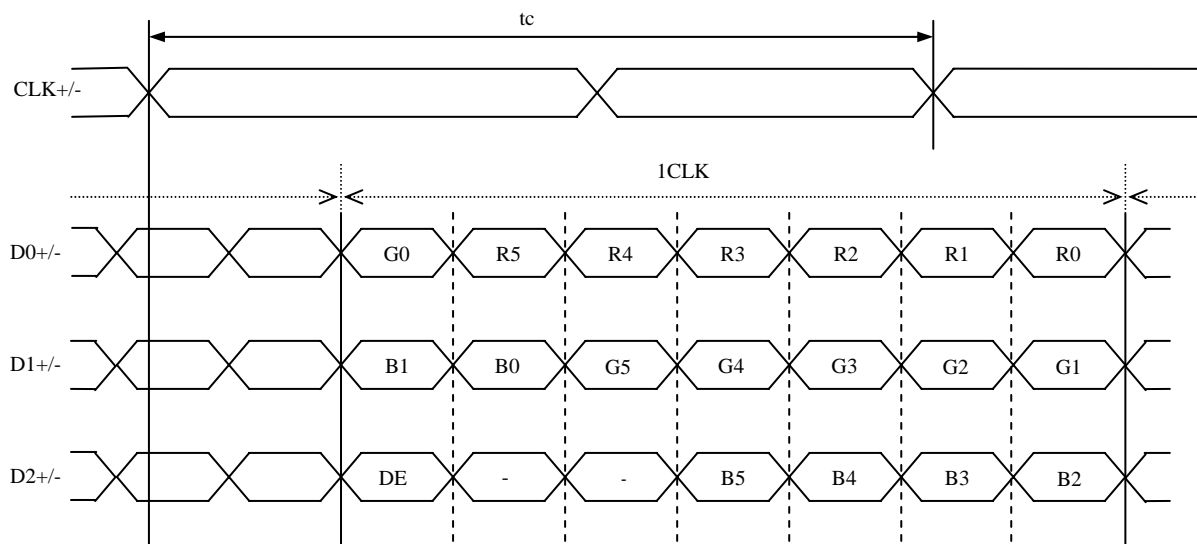
(1) Input data signal: 8bit, MAP A



(2) Input data signal: 8bit, MAP B



(3) Input data signal: 6bit



4.6 DISPLAY COLORS AND INPUT DATA SIGNALS

4.6.1 Combinations between input data signals, FRC signal and MSL signal

This product can display in equivalent to 16,777,216 colors in 256 gray scales and 262,144 colors in 64 gray scales by combination between input data signals, FRC signal and MSL signal. See following table.

Combination	Input data signals	Input Data mapping	CN1- Pin No.1 and 2	FRC terminal	MSL terminal	Display colors	Remarks
①	8 bit	MAP A	D3+/-	High	Low	16,777,216	Note1
②	8 bit	MAP B	D3+/-	High	High	16,777,216	Note1
③	6 bit	-	GND	Low or Open	Low	262,144	Note2

Note1: See "4.6.2 16,777,216 colors".

Note2: See "4.6.3 262,144 colors".

PRELIMINARY

4.6.2 16,777,216 colors

This product can display equivalent of 16,777,216 colors in 256 gray scales by combination ① and ②.
 (See "4.6.1 Combinations between input data signals, FRC signal and MSL signal".)

Also the relation between display colors and input data signals is as the following table.

Display colors		Data signal (0: Low level, 1: High level)																							
		R7	R6	R5	R4	R3	R2	R1	R0	G7	G6	G5	G4	G3	G2	G1	G0	B7	B6	B5	B4	B3	B2	B1	B0
Basic Colors	Black	0	0	0	0	0	0	0	0	0	0	0	0	0	0	0	0	0	0	0	0	0	0	0	0
	Blue	0	0	0	0	0	0	0	0	0	0	0	0	0	0	0	0	1	1	1	1	1	1	1	1
	Red	1	1	1	1	1	1	1	1	0	0	0	0	0	0	0	0	0	0	0	0	0	0	0	0
	Magenta	1	1	1	1	1	1	1	1	0	0	0	0	0	0	0	0	1	1	1	1	1	1	1	1
	Green	0	0	0	0	0	0	0	0	1	1	1	1	1	1	1	1	0	0	0	0	0	0	0	0
	Cyan	0	0	0	0	0	0	0	0	1	1	1	1	1	1	1	1	1	1	1	1	1	1	1	1
	Yellow	1	1	1	1	1	1	1	1	1	1	1	1	1	1	1	1	0	0	0	0	0	0	0	0
	White	1	1	1	1	1	1	1	1	1	1	1	1	1	1	1	1	1	1	1	1	1	1	1	1
Red gray scale	Black	0	0	0	0	0	0	0	0	0	0	0	0	0	0	0	0	0	0	0	0	0	0	0	0
	dark	0	0	0	0	0	0	0	1	0	0	0	0	0	0	0	0	0	0	0	0	0	0	0	0
	↑					:																			
	↓					:																			
	bright	1	1	1	1	1	1	0	1	0	0	0	0	0	0	0	0	0	0	0	0	0	0	0	0
Red	1	1	1	1	1	1	1	1	0	0	0	0	0	0	0	0	0	0	0	0	0	0	0	0	
Green gray scale	Black	0	0	0	0	0	0	0	0	0	0	0	0	0	0	0	0	0	0	0	0	0	0	0	0
	dark	0	0	0	0	0	0	0	0	0	0	0	0	0	0	0	1	0	0	0	0	0	0	0	0
	↑					:																			
	↓					:																			
	bright	0	0	0	0	0	0	0	0	1	1	1	1	1	1	0	1	0	0	0	0	0	0	0	0
Green	0	0	0	0	0	0	0	0	1	1	1	1	1	1	1	1	0	0	0	0	0	0	0	0	
Blue gray scale	Black	0	0	0	0	0	0	0	0	0	0	0	0	0	0	0	0	0	0	0	0	0	0	0	0
	dark	0	0	0	0	0	0	0	0	0	0	0	0	0	0	0	0	0	0	0	0	0	0	0	1
	↑					:																			
	↓					:																			
	bright	0	0	0	0	0	0	0	0	0	0	0	0	0	0	0	0	1	1	1	1	1	1	0	1
Blue	0	0	0	0	0	0	0	0	0	0	0	0	0	0	0	0	1	1	1	1	1	1	1	1	

PRELIMINARY

4.6.3 262,144 colors

This product can display equivalent of 262,144 colors in 64 gray scales by combination ③.

(See "4.6.1 Combinations between input data signals, FRC signal and MSL signal".)

Also the relation between display colors and input data signals is as the following table.

Display colors		Data signal (0: Low level, 1: High level)																	
		R5	R4	R3	R2	R1	R0	G5	G4	G3	G2	G1	G0	B5	B4	B3	B2	B1	B0
Basic colors	Black	0	0	0	0	0	0	0	0	0	0	0	0	0	0	0	0	0	0
	Blue	0	0	0	0	0	0	0	0	0	0	0	0	1	1	1	1	1	1
	Red	1	1	1	1	1	1	0	0	0	0	0	0	0	0	0	0	0	0
	Magenta	1	1	1	1	1	1	0	0	0	0	0	0	1	1	1	1	1	1
	Green	0	0	0	0	0	0	1	1	1	1	1	1	0	0	0	0	0	0
	Cyan	0	0	0	0	0	0	1	1	1	1	1	1	1	1	1	1	1	1
	Yellow	1	1	1	1	1	1	1	1	1	1	1	1	0	0	0	0	0	0
	White	1	1	1	1	1	1	1	1	1	1	1	1	1	1	1	1	1	1
Red gray scale	Black	0	0	0	0	0	0	0	0	0	0	0	0	0	0	0	0	0	0
		0	0	0	0	0	1	0	0	0	0	0	0	0	0	0	0	0	0
	dark	0	0	0	0	1	0	0	0	0	0	0	0	0	0	0	0	0	0
	↑				:						:					:			
	↓				:						:					:			
	bright	1	1	1	1	0	1	0	0	0	0	0	0	0	0	0	0	0	0
Red	1	1	1	1	1	1	0	0	0	0	0	0	0	0	0	0	0	0	
Green gray scale	Black	0	0	0	0	0	0	0	0	0	0	0	0	0	0	0	0	0	0
		0	0	0	0	0	0	0	0	0	0	1	0	0	0	0	0	0	0
	dark	0	0	0	0	0	0	0	0	0	0	1	0	0	0	0	0	0	0
	↑				:						:					:			
	↓				:						:					:			
	bright	0	0	0	0	0	0	1	1	1	1	0	1	0	0	0	0	0	0
Green	0	0	0	0	0	0	1	1	1	1	1	1	0	0	0	0	0	0	
Blue gray scale	Black	0	0	0	0	0	0	0	0	0	0	0	0	0	0	0	0	0	0
		0	0	0	0	0	0	0	0	0	0	0	0	0	0	0	0	0	1
	dark	0	0	0	0	0	0	0	0	0	0	0	0	0	0	0	0	1	0
	↑				:						:					:			
	↓				:						:					:			
	bright	0	0	0	0	0	0	0	0	0	0	0	0	1	1	1	1	0	1
Blue	0	0	0	0	0	0	0	0	0	0	0	0	1	1	1	1	1	0	
	0	0	0	0	0	0	0	0	0	0	0	0	1	1	1	1	1	1	

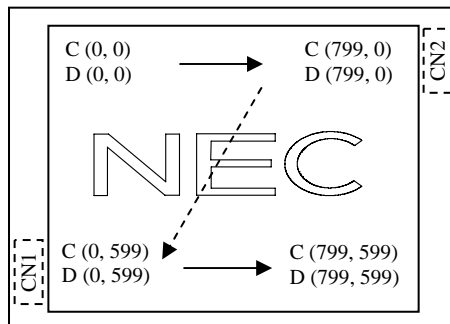
4.7 DISPLAY POSITIONS

The following table is the coordinates per pixel (See "4.8 SCANNING DIRECTIONS".).

C (0, 0)													
<table style="border-collapse: collapse; margin: 0 auto;"> <tr> <td style="border: 1px solid black; padding: 2px 10px;">R</td> <td style="border: 1px solid black; padding: 2px 10px;">G</td> <td style="border: 1px solid black; padding: 2px 10px;">B</td> <td colspan="4"></td> </tr> </table>							R	G	B				
R	G	B											
C(0, 0)	C(1, 0)	...	C(X, 0)	...	C(798, 0)	C(799, 0)							
C(0, 1)	C(1, 1)	...	C(X, 1)	...	C(798, 1)	C(799, 1)							
.							
.							
.							
C(0, Y)	C(1, Y)	...	C(X, Y)	...	C(798, Y)	C(799, Y)							
.							
.							
.							
C(0, 598)	C(1, 598)	...	C(X, 598)	...	C(798, 598)	C(799, 598)							
C(0, 599)	C(1, 599)	...	C(X, 599)	...	C(798, 599)	C(799, 599)							

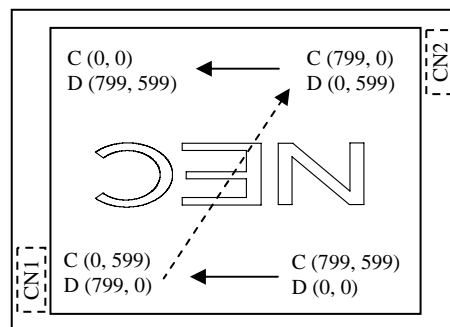
4.8 SCANNING DIRECTIONS

The following figures are seen from a front view. Also the arrow shows the direction of scan.



Note1

Figure1. Normal scan (DPS: Low or Open)



Note1

Figure2. Reverse scan (DPS: High)

Note1: Meaning of C (X, Y) and D (X, Y)

C (X, Y): The coordinates of the display position (See "4.7 DISPLAY POSITIONS".)

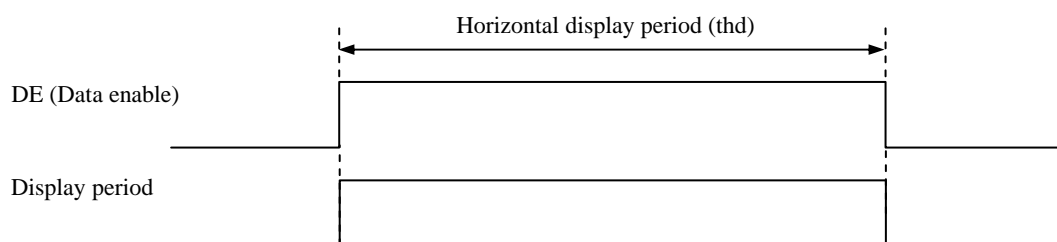
D (X, Y): The data number of input signal for LCD panel signal processing board

4.9 INPUT SIGNAL TIMINGS

4.9.1 Outline of input signal timings

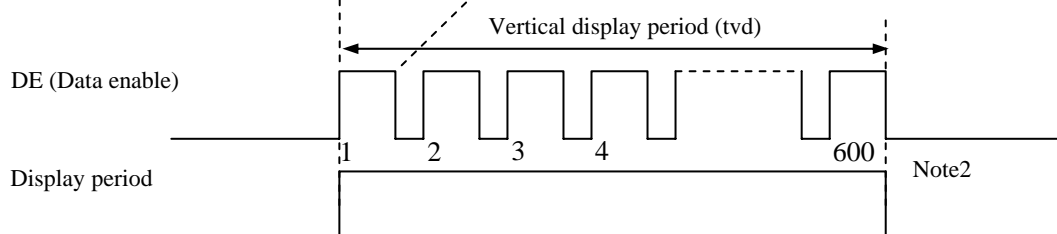
- Horizontal signal

Note1



- Vertical signal

Note1



Note1: This diagram indicates virtual signal for set up to timing.

Note2: See "4.9.3 Input signal timing chart" for numeration of pulse.

PRELIMINARY

4.9.2 Timing characteristics

(Note1, Note2, Note3)

Parameter		Symbol	min.	typ.	max.	Unit	Remarks	
CLK	Frequency	1/tc	34.0	38.362	42.0	MHz	26.067ns (typ.)	
	Duty	-	-			-	-	
	Rise time, Fall time	-	-			ns	-	
DATA	CLK-DATA	Setup time	-			ns	-	
		Hold time	-			ns		
	Rise time, Fall time	-	-			ns		
DE	Horizontal	Cycle	th	24.0	26.693	30.1	μs	37.463kHz (typ.)
			-	-	1,024	-	CLK	
	Vertical (One frame)	Cycle	tv	16.1	16.683	17.2	ms	59.94Hz (typ.)
			-	-	625	-	H	
	CLK-DE	Setup time	-	-			ns	-
			Hold time	-	-			
Rise time, Fall time		-	-			ns		

Note1: Definition of parameters is as follows.

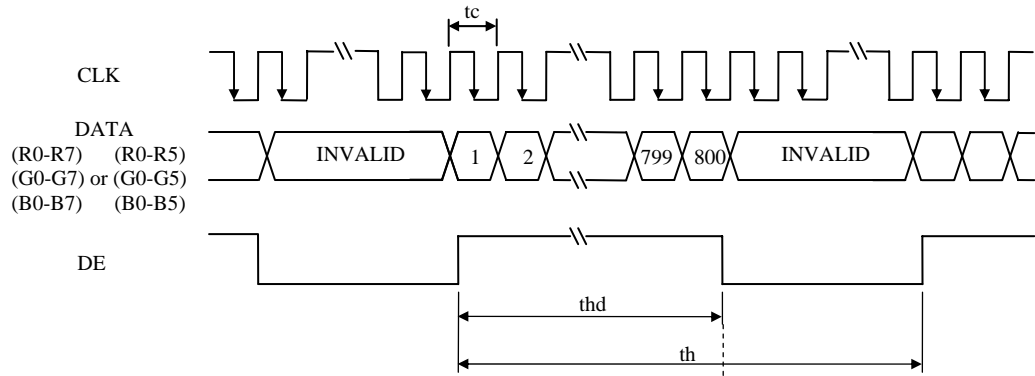
$$tc = 1CLK, th = 1H$$

Note2: See the data sheet of LVDS transmitter.

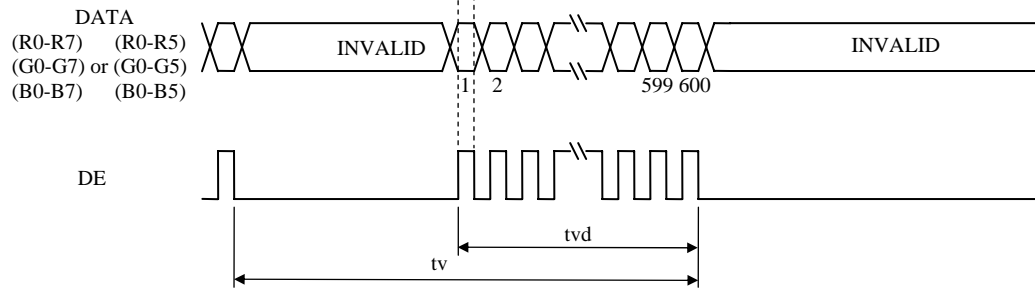
Note3: Vertical cycle (tv) should be specified in integral multiple of Horizontal cycle (th).

4.9.3 Input signal timing chart

Horizontal timing



Vertical timing



4.10 OPTICS

4.10.1 Optical characteristics

(Note1, Note2)

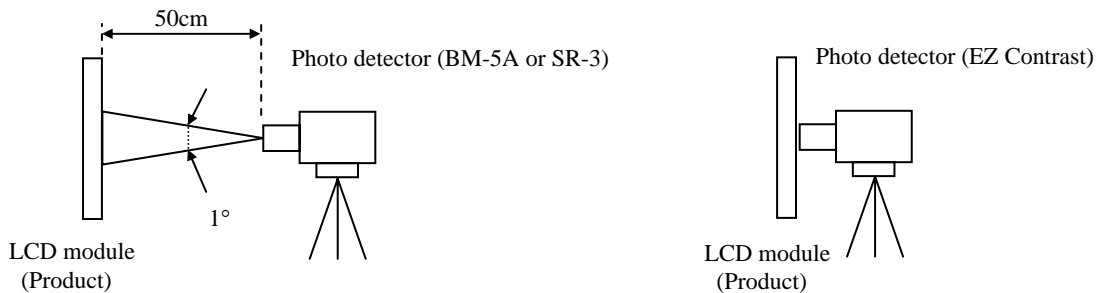
Parameter	Condition	Symbol	min.	typ.	max.	Unit	Measuring instrument	Remarks	
Luminance	White at center $\theta R=0^\circ, \theta L=0^\circ, \theta U=0^\circ, \theta D=0^\circ$	L	300	450	-	cd/m ²	BM-5A	-	
Contrast ratio	White/Black at center $\theta R=0^\circ, \theta L=0^\circ, \theta U=0^\circ, \theta D=0^\circ$	CR	500	900	-	-	BM-5A	Note3	
Luminance uniformity	White $\theta R=0^\circ, \theta L=0^\circ, \theta U=0^\circ, \theta D=0^\circ$	LU	-	1.25	1.4	-	BM-5A	Note4	
Chromaticity	White	x coordinate	W _x	0.263	0.313	0.363	-	SR-3	Note5
		y coordinate	W _y	0.279	0.329	0.379	-		
	Red	x coordinate	R _x	-	TBD	-	-		
		y coordinate	R _y	-	TBD	-	-		
	Green	x coordinate	G _x	-	TBD	-	-		
		y coordinate	G _y	-	TBD	-	-		
Blue	x coordinate	B _x	-	TBD	-	-			
	y coordinate	B _y	-	TBD	-	-			
Color gamut	$\theta R=0^\circ, \theta L=0^\circ, \theta U=0^\circ, \theta D=0^\circ$ at center, against NTSC color space	C	35	40	-	%			
Response time	White to Black	T _{on}	-	3	6	ms	BM-5A	Note6	
	Black to White	T _{off}	-	15	19	ms		Note7	
Viewing angle	Right	$\theta U=0^\circ, \theta D=0^\circ, CR \geq 10$	θR	70	80	-	EZ Contrast	Note8	
	Left	$\theta U=0^\circ, \theta D=0^\circ, CR \geq 10$	θL	70	80	-			
	Up	$\theta R=0^\circ, \theta L=0^\circ, CR \geq 10$	θU	70	80	-			
	Down	$\theta R=0^\circ, \theta L=0^\circ, CR \geq 10$	θD	70	80	-			

Note1: These are initial characteristics.

Note2: Measurement conditions are as follows.

T_a= 25°C, VCC= 3.3V, I_L= 50mA/One circuit, Display mode: SVGA, Horizontal cycle= 1/37.463kHz, Vertical cycle= 1/59.94Hz, DPS= Low or Open: Normal scan

Optical characteristics are measured at luminance saturation after 20minutes from working the product, in the dark room. Also measurement methods are as follows.



Note3: See "4.10.2 Definition of contrast ratio".

Note4: See "4.10.3 Definition of luminance uniformity".

Note5: These coordinates are found on CIE 1931 chromaticity diagram.

Note6: Product surface temperature: TopF= TBD °C

Note7: See "4.10.4 Definition of response times".

Note8: See "4.10.5 Definition of viewing angles".

4.10.2 Definition of contrast ratio

The contrast ratio is calculated by using the following formula.

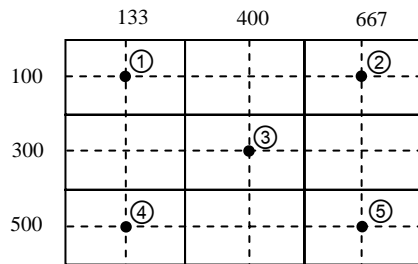
$$\text{Contrast ratio (CR)} = \frac{\text{Luminance of white screen}}{\text{Luminance of black screen}}$$

4.10.3 Definition of luminance uniformity

The luminance uniformity is calculated by using following formula.

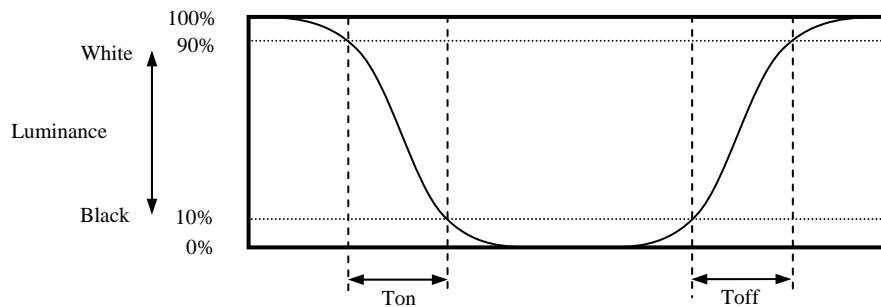
$$\text{Luminance uniformity (LU)} = \frac{\text{Maximum luminance from ① to ⑤}}{\text{Minimum luminance from ① to ⑤}}$$

The luminance is measured at near the 5 points shown below.

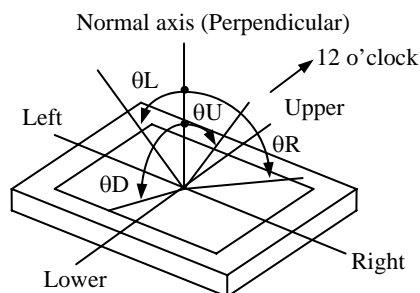


4.10.4 Definition of response times

Response time is measured, the luminance changes from "white" to "black", or "black" to "white" on the same screen point, by photo-detector. Ton is the time it takes the luminance change from 90% down to 10%. Also Toff is the time it takes the luminance change from 10% up to 90% (See the following diagram.).



4.10.5 Definition of viewing angles



5. ESTIMATED LUMINANCE LIFETIME

The luminance lifetime is the time from initial luminance to half-luminance.

This lifetime is the estimated value, and is not guarantee value.

Condition		Expected luminance lifetime (Life time expectancy) Note1, Note2	Unit
LED elementary substance	25°C (Ambient temperature of LED) Continuous operation, IL= 50mA/One circuit	70,000	h
	70°C (Ambient temperature of LED) Continuous operation, IL= 50mA/One circuit	60,000	h

Note1: Life time expectancy is mean time to half-luminance.

Note2: Estimated luminance lifetime is not the value for LCD module but the value for LED elementary substance.

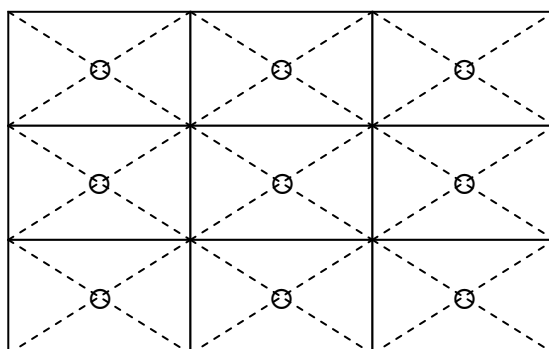
Note3: By ambient temperature, the lifetime changes particularly. Especially, in case the product works under high temperature environment, the lifetime becomes short.

6. RELIABILITY TESTS

Test item	Condition	Judgment	Note1
High temperature and humidity (Operation)	① $60 \pm 2^{\circ}\text{C}$, RH= 90%, 240hours ② Display data is black.	No display malfunctions	
High temperature (Operation)	① $80 \pm 3^{\circ}\text{C}$, 240hours ② Display data is black.		
Heat cycle (Operation)	① $-30 \pm 3^{\circ}\text{C}$...1hour $80 \pm 3^{\circ}\text{C}$...1hour ② 50cycles, 4 hours/cycle ③ Display data is black.		
Thermal shock (Non operation)	① $-30 \pm 3^{\circ}\text{C}$...30minutes $80 \pm 3^{\circ}\text{C}$...30minutes ② 100cycles, 1hour/cycle ③ Temperature transition time is within 5 minutes.		
ESD (Operation)	① 150pF, 150Ω, $\pm 10\text{kV}$ ② 9 places on a panel surface Note2 ③ 10 times each places at 1 sec interval		
Dust (Operation)	① Sample dust: No. 15 (by JIS-Z8901) ② 15 seconds stir ③ 8 times repeat at 1 hour interval		
Vibration (Non operation)	① 5 to 100Hz, 19.6m/s^2 ② 1 minute/cycle ③ X, Y, Z directions ④ 120 times each directions	No display malfunctions No physical damages	
Mechanical shock (Non operation)	① 539m/s^2 , 11ms ② $\pm X$, $\pm Y$, $\pm Z$ directions ③ 5 times each directions		

Note1: Display and appearance are checked under environmental conditions equivalent to the inspection conditions of defect criteria.

Note2: See the following figure for discharge points.



7. PRECAUTIONS

7.1 MEANING OF CAUTION SIGNS

The following caution signs have very important meaning. **Be sure to read "7.2 CAUTIONS" and "7.3 ATTENTIONS", after understanding these contents!**



This sign has the meaning that customer will be injured by personnel or the product will sustain a damage, if customer has wrong operations.



This sign has the meaning that customer will be injured by personnel, if customer has wrong operations.

7.2 CAUTIONS



*** Do not shock and press the LCD panel and the backlight! There is a danger of breaking, because they are made of glass. (Shock: To be not greater 539m/s^2 and to be not greater 11ms , Pressure: To be not greater 19.6 N ($\phi 16\text{mm}$ jig))**

7.3 ATTENTIONS



7.3.1 Handling of the product

- ① Take hold of both ends without touching the circuit board when the product (LCD module) is picked up from inner packing box to avoid broken down or misadjustment, because of stress to mounting parts on the circuit board.
- ② When the product is put on the table temporarily, display surface must be placed downward.
- ③ When handling the product, take the measures of electrostatic discharge with such as earth band, ionic shower and so on, because the product may be damaged by electrostatic.
- ④ The torque for product mounting screws must never exceed $0.294\text{N}\cdot\text{m}$. Higher torque might result in distortion of the bezel.
- ⑤ The product must be installed using mounting holes without undue stress such as bends or twist (See outline drawings). And do not add undue stress to any portion (such as bezel flat area). Bends or twist described above and undue stress to any portion may cause display mura.
- ⑥ Do not press or rub on the sensitive product surface. When cleaning the panel surface, wipe it with a soft dry cloth.
- ⑦ Do not push nor pull the interface connectors while the product is working.
- ⑧ When handling the product, use of an original protection sheet on the product surface (polarizer) is recommended for protection of product surface. Adhesive type protection sheet may change color or characteristics of the polarizer.
- ⑨ Usually liquid crystals don't leak through the breakage of glasses because of the surface tension of thin layer and the construction of LCD panel. But, if you contact with liquid crystal for the worst, please wash it out with soap.

7.3.2 Environment

- ① Do not operate or store in high temperature, high humidity, dewdrop atmosphere or corrosive gases. Keep the product in packing box with antistatic pouch in room temperature to avoid dusts and sunlight, when storing the product.
- ② In order to prevent dew condensation occurring by temperature difference, the product packing box should be opened after enough time being left under the environment of an unpacking room. Evaluate the leaving time sufficiently because a situation of dew condensation occurring is changed by the environmental temperature and humidity. (Recommended leaving time: 6 hours or more with packing state)
- ③ Do not operate in high magnetic field. Circuit boards may be broken down by it.
- ④ This product is not designed as radiation hardened.

7.3.3 Characteristics

The following items are neither defects nor failures.

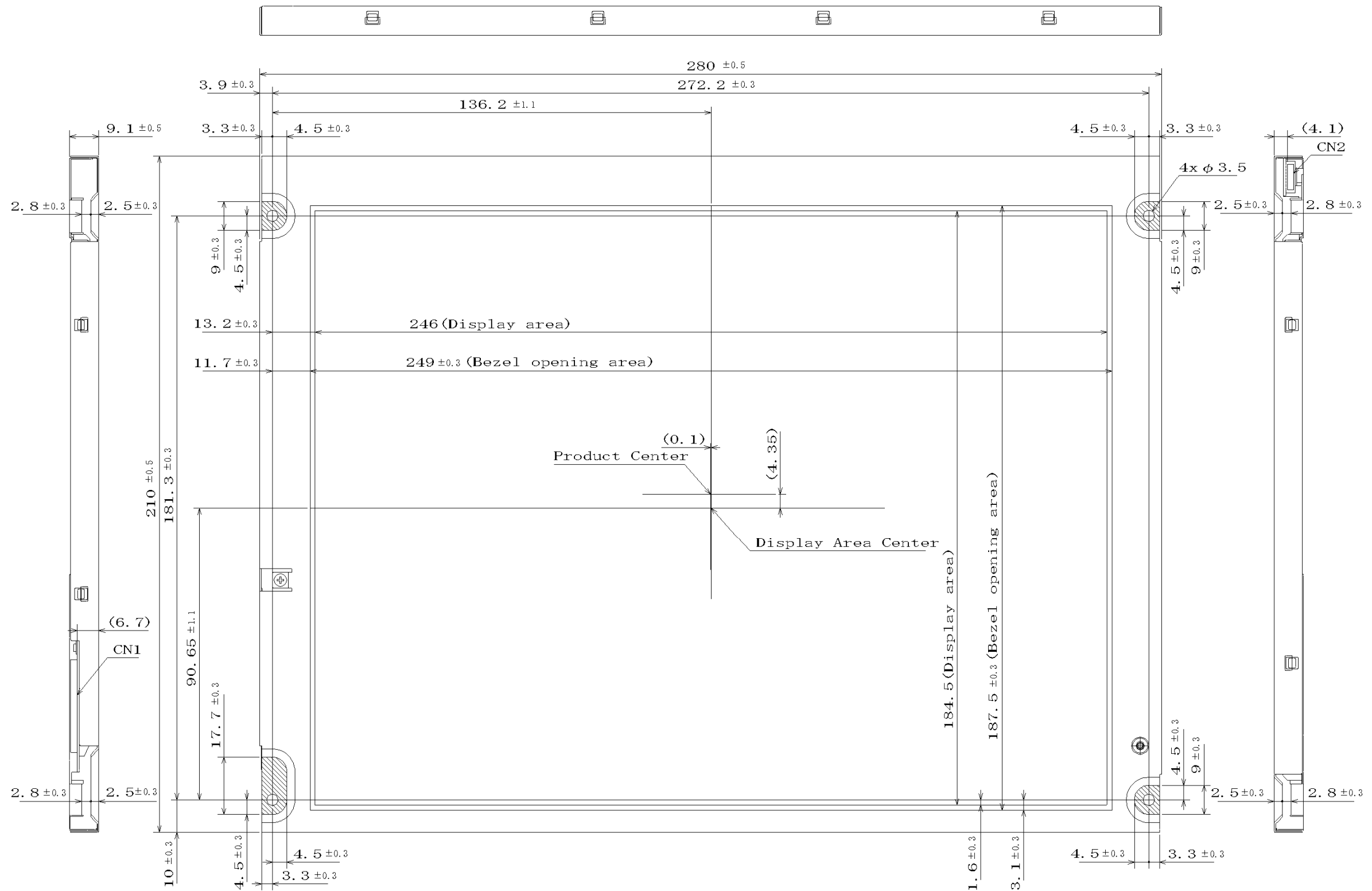
- ① Characteristics of the LCD (such as response time, luminance, color uniformity and so on) may be changed depending on ambient temperature. If the product is stored under condition of low temperature for a long time, it may cause display mura. In this case, the product should be operated after enough time being left under condition of operating temperature.
- ② Display mura, flicker, vertical seam or small spot may be observed depending on display patterns.
- ③ Do not display the fixed pattern for a long time because it may cause image sticking. Use a screen saver, if the fixed pattern is displayed on the screen.
- ④ The display color may be changed depending on viewing angle because of the use of condenser sheet in the backlight.
- ⑤ Optical characteristics may be changed depending on input signal timings.

7.3.4 Other

- ① All GND and VCC terminals should be used without any non-connected lines.
- ② Do not disassemble a product or adjust variable resistors.
- ③ See "REPLACEMENT MANUAL FOR LAMP HOLDER SET", when replacing LED backlight.
- ④ Pay attention not to insert foreign materials inside of the product, when using tapping screws.
- ⑤ Pack the product with original shipping package, in order to avoid any damages during transportation, when returning the product to NEC for repair and so on.


8. OUTLINE DRAWINGS

8.1 FRONT VIEW



Note1: The values in parentheses are for reference.

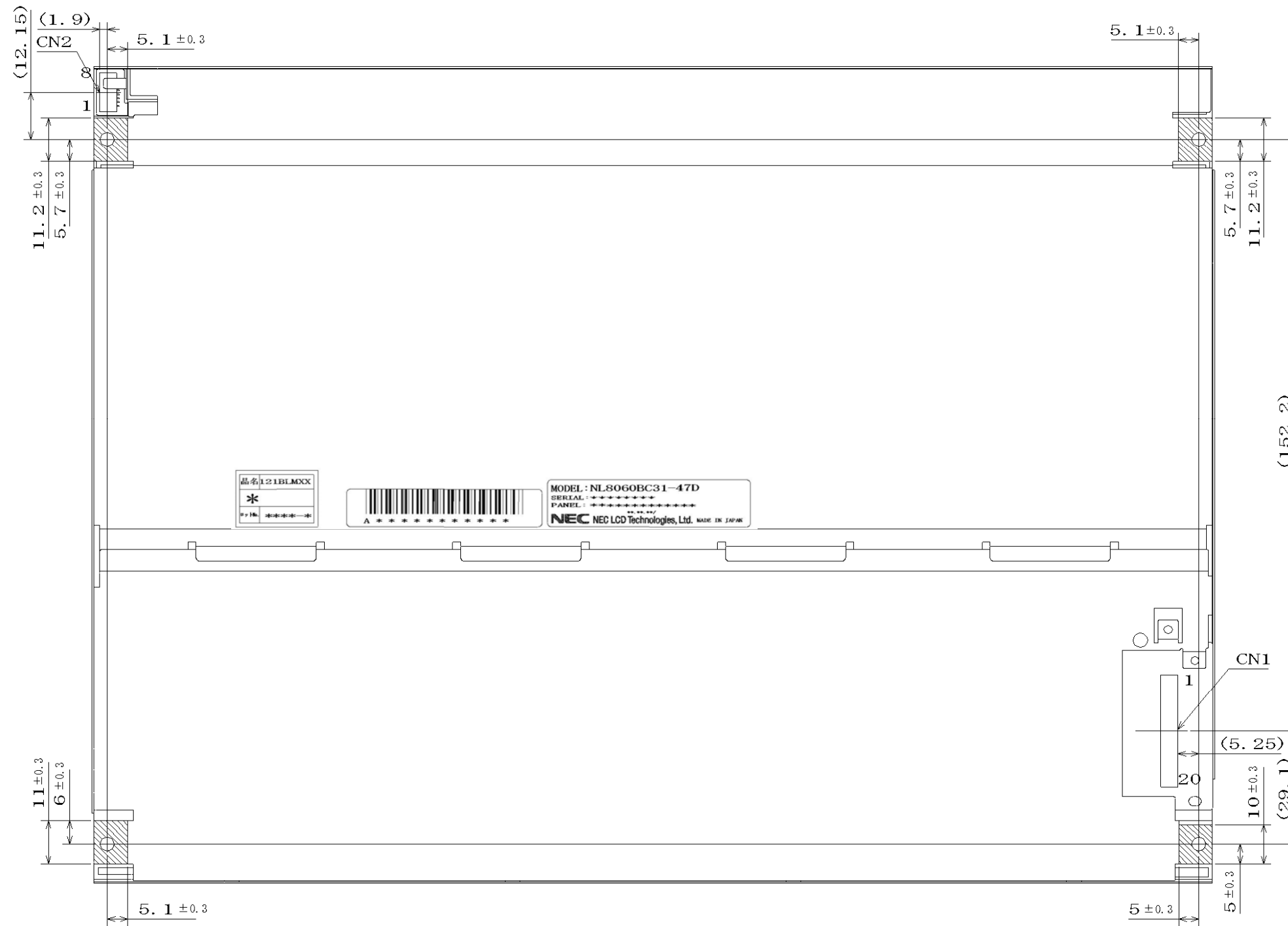
Note2: The torque for product mounting screws must never exceed 0.294N-m.

Note3:  Mounting hole portions (4 pieces)

Unit: mm


8.2 REAR VIEW

6



Note1: The values in parentheses are for reference.

Note2: The torque for product mounting screws must never exceed 0.294N·m.

Note3:  Mounting hole portions (4 pieces)

Unit: mm

PRELIMINARY

REVISION HISTORY

The inside of latest specifications is revised to the clerical error and the major improvement of previous edition. Only a changed part such as functions, characteristic value and so on that may affect a design of customers, are described especially below.

Edition	Document number	Prepared date	Revision contents and signature
1st edition	DOD-PP-0629	Sep.18, 2008	<p>Revision contents</p> <p>New issue</p> <p>Writer</p> <p>Approved by _____ H. FUKUYOSHI</p> <p>Checked by _____</p> <p>Prepared by _____ A. KUMANO</p>
2nd edition	DOD-PP-0678	Nov. 28, 2008	<p>Revision contents</p> <p>P5 GENERAL SPECIFICATIONS (correction)</p> <ul style="list-style-type: none"> • Luminance: At IL= 40mA → 50mA • Power consumption: At IL= 40 mA → 50 mA, TBD W → (5.1) W (correction) <p>P6-P7 BLOCK DIAGRAM (correction)</p> <ul style="list-style-type: none"> • Backlight - Anode1-4 → Anode1-2 • Backlight - Cathode1-4 → Anode1-2 • Note3: Backlight in detail. <p>P10 Backlight lamp (correction)</p> <ul style="list-style-type: none"> • Forward current-typ:40.0 → 50.0, max.: TBD → 55.0 • Forward Voltage-typ:25.6 → 39.6, max.: TBD → 45.6 -Remarks: at IL= 4 0mA → 50mA • Note2: The...between 4 circuits... → The...between 2 circuits... <p>P13 Backlight lamp (correction)</p> <ul style="list-style-type: none"> • CN2 plug-Pin No. 5-8: Symbol , Signal (correction) <p>P23 Optical characteristics (correction)</p> <ul style="list-style-type: none"> • Note2: ...IL= 40mA,... → ...IL= 50mA... <p>P25-P26</p> <ul style="list-style-type: none"> • P25 RELIABILITY TESTS → P26 (change) • P26 ESTIMATED LUMINANCE LIFETIME → P25 (change and correction) <p>P28 CAUTIONS</p> <ul style="list-style-type: none"> • *Do not ... backlight. There ... injury. (elimination) • ② Do not ..., and...damage. (elimination) • ⑦ Do not ...surface. When...surface, use...recommended. → Do not...surface. When...surface, wipe it a soft dry cloth. (correction) • ⑥ The interference...not appear. (elimination) <p>Writer</p> <p>Approved by _____ H. FUKUYOSHI</p> <p>Checked by _____</p> <p>Prepared by _____ H. FUKUYOSHI</p>
3rd edition	DOD-PP-0701	Jan. 05, 2009	<p>Revision contents</p> <p>P4 FEATUERS</p> <ul style="list-style-type: none"> • Replaceable LED holder for backlight → Replaceable lamp holder for backlight (correction) <p>P5 GENERAL SPECIFICATIONS</p> <ul style="list-style-type: none"> • Weight : 670g → (670)g (parentheses addition) • Contrast ratio :600:1 → (600:1) (parentheses addition) • Luminance :(400)cd/m² → (450)cd/m² (correction) <p>P13 Positions of plug and socket</p> <ul style="list-style-type: none"> • CN2 Pin No (correction) <p>P23 Optical characteristics (correction)</p> <ul style="list-style-type: none"> • Luminance -typ.: (400)cd/m² → (450)cd/m² • Chromaticity-White x coordinate: 0.263(min.),0.313(typ.),0.363(max.)→TBD(min.),TBD(typ.),TBD(max.) y coordinate: 0.279(min.),0.329(typ.),0.379(max.)→TBD(min.),TBD(typ.),TBD(max.)

PRELIMINARY

REVISION HISTORY

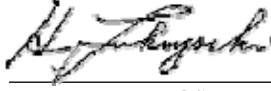
Edition	Document number	Prepared date	Revision contents and signature
4th edition	DOD-PP-0775	Apr.24, 2009	<p>Revision contents</p> <p>P27 ESTIMATED LUMINACE LIFE TIME</p> <ul style="list-style-type: none"> • “Life time expectancy”, “One circuit” (character addition) • Note1: Life time ... (addition), Note2, Note3: (number change) <p>P28 RELIABILITY TESTS</p> <ul style="list-style-type: none"> • High temperature-Condition: ① 70±3°C... →①(80±3°C)... (correction) • Heat cycle-Condition: ①-20±3°C...,70±3°C...→①(-30±3°C)....,(80±3°C)... (correction) <p>P31- P32 OUTLINE DRAWINGS</p> <ul style="list-style-type: none"> • FRONT VIEW, REAR VIEW (rewrite) <p>Writer</p> <p style="text-align: center;"> <i>Approved by</i> _____ <i>Checked by</i> _____ <i>Prepared by</i> _____ H. FUKUYOSHI </p>
5th edition	DOD-PP-0802	May 29, 2009	<p>Revision contents</p> <p>P5 General Specifications</p> <ul style="list-style-type: none"> • Weight: (670)g (typ.) → 600g (typ.) • Contrast ratio: (900:1) (typ.) → 900:1 (typ.) • Viewing angle: Down side (80°) (typ.) → 80° (typ.) • Response time: 25ms (typ.) → 18ms (typ.) • Luminance: (450)cd/m² → 450cd/m² • Backlight- Lamp holder set: TBD → 121LHS29 - LED driving circuit: 121PW01F (addition) <p>P8 Detailed Specifications</p> <p>- Mechanical Specifications</p> <ul style="list-style-type: none"> • Weight: (670) , TBD (max.) g (-30) to (+80) 600 (typ.), 630 (max.) g <p>- Absolute Maximum Ratings</p> <ul style="list-style-type: none"> • Backlight: Power dissipation(PD)-TBD(W)→Forward voltage(VL)-50(V) (changed) • Storage temperature(Tst): (-30) to (+80) °C → -30 to +80 °C • Operating temperature- Front surface (TopF) and Rear surface (TopR) : (-30) to (+80) °C → -30 to +80 °C <p>P9 Electrical Characteristics- LCD panel signal processing board</p> <ul style="list-style-type: none"> • Power supply current(ICC): 350 (typ.), 530 (max.) mA → 400 (typ.), 600 (max.) mA <p>P10 Backlight lamp</p> <ul style="list-style-type: none"> • Forward voltage(VL) : - (min.), 26.4 (typ.), 30.4 (max.) (V) (at IL= 50mA/One circuit) (elimination) : 23.8 (min.), (27.0) (typ.), 30.6 (max.) (V) (Ta= +25°C at IL= 50mA/One circuit) (addition) : (21.6) (min.), - (typ.), - (max.) (V) (Ta= +80°C at IL= 50mA/One circuit) (addition) : - (min.), - (typ.), 33.6 (max.) (V) (Ta= -30°C at IL= 50mA/One circuit) (addition) : - (min.), - (typ.), 34.4 (max.) (V) (Ta= -30°C at IL= 55mA/One circuit) (addition) <p>P19 16,777,216 colors</p> <ul style="list-style-type: none"> • ② (addition) <p>P20 262,144 colors</p> <ul style="list-style-type: none"> • ③ (addition) <p>P19 16,777,216 colors and P20 262,144 colors</p> <ul style="list-style-type: none"> • “4.6.1 ... FRC signal” → “4.6.1 ... FRC signal and MSL signal” (addition) <p>P25 Optics- Optical characteristics</p> <ul style="list-style-type: none"> • Luminance (L): TBD (min.), (450) (typ.) → 300 (min.), 450 (typ.) cd/m² • Contrast ratio (CR): TBD (min.), (900) (typ.) → 500 (min.), 900 (typ.) • Chromaticity- White (Wx): TBD (min.), (0.313) (typ.), TBD (max.) → 0.263 (min.), 0.313 (typ.), 0.363 (max.) - (Wy): TBD (min.), (0.329) (typ.), TBD (max.) → 0.279 (min.), 0.329 (typ.), 0.379 (max.) • Color gamut (C): TBD (min.) → 35 (min.) % • Response time- (Ton): 6 (typ.), 15 (max.) → 3 (typ.), 6 (max.) ms - (Toff): 19 (typ.), 47 (max.) → 15 (typ.), 19 (max.) ms • Viewing angle (Down): (70) (min.), (80) (typ.) → 70 (min.), 80 (typ.) °

REVISION HISTORY

Edition	Document number	Prepared date	Revision contents and signature
3rd edition	DOD-PP-0701	Jan. 05, 2009	<p>Revision contents</p> <p>P25 ESTIMATED LUMINANCE LIFETIME (description correction) P27 MEANING OF CAUTION SIGNS (description correction) P29-30 OUTLINE DRAWINGS (correction)</p> <p>Writer</p> <p style="text-align: center;"><i>Approved by</i> <i>Checked by</i> <i>Prepared by</i></p> <p style="text-align: center;">_____ H. FUKUYOSHI _____ H. FUKUYOSHI</p>
4th edition	DOD-PP-0775	Apr. 24, 2009	<p>Revision contents</p> <p>P4 FEATURES</p> <ul style="list-style-type: none"> • Wide temperature range (addition) <p>P5 GENERAL SPECIFICATIONS</p> <ul style="list-style-type: none"> • Module size: 280.0 (W) × 210.0 (H) × 11.0 (D) mm (typ.) → 280.0 (W) × 210.0 (H) × 9.1 (D) mm (typ.) (correction) • Contrast ratio: (600:1) → (900:1) (correction) • Viewing angle: Vertical -Down side 60°(typ.) → (80°)(typ.) (correction) • Luminance: At IL= 50mA → At IL= 50mA/One circuit (correction) • Power consumption: At IL= 50mA, ... → At IL=50mA/One circuit, ... (correction) <p>P6 P7 BLOCK DIAGRAM (correction)</p> <ul style="list-style-type: none"> • Note1: (correction) • MSL (addition), • Anode, Cathode 1-2 → 1-3, Note3: Backlight in detail <p>P8 DETAILED SPECIFICATIONS</p> <ul style="list-style-type: none"> • MECHANICAL SPECIFICATIONS (correction) Module size: 280.0±0.5(W) × 210.0±0.5(H) × 11.0±0.5(D) mm (typ.) → 280.0±0.5(W) × 210.0±0.5(H) × 9.1±0.5(D) mm (typ.) • ABSOLUTE MAXIMUM RATINGS -Input voltage for signals-Rating : "and -0.3 to + 4.0" (addition) -Operating temperature-Rating : -20 to + 70 °C → (-30 to + 80)(correction) • Note2: DPS, FRC → DPS, FRC, MSL (correction) • Note3, Note4 (correction) <p>P9 ELECTRICAL CHARACTERISTICS (correction)</p> <ul style="list-style-type: none"> • LCD panel signal processing board - Parameter: Input Voltage...,Input current... <p>P10 Backlight lamp:</p> <ul style="list-style-type: none"> • Forward Voltage 39.6 (typ.), 45.6 (max.) → 26.4 (typ.), 30.4(max.) (correction) • Remarks: at IL=50mA → at IL=50mA/One circuit (correction) • Note 2 (correction), Note3: (addition) <p>P11 LCD panel signal processing board</p> <ul style="list-style-type: none"> • Note2: ... (DPS and FRC) ... → (DPS, FRC and MSL) (correction) <p>P12 - P14 (rewrite)</p> <p>P15 (2) Input data signal: 8bit,MAP: (addition)</p> <p>P16 (3) Input data signal: 6bit (correction)</p> <ul style="list-style-type: none"> • MSL (addition) <p>P17 - P18 Input data mapping (addition)</p> <ul style="list-style-type: none"> • Input data signal: 8bit, MAP A,,: 8bit, MAP B,,:6bit <p>P18 DISPLAY COLORS AND INPUT DATA SIGNALS (correction)</p> <ul style="list-style-type: none"> • Combinations... FRC signals → Combinations... FRC and MSL signals <p>P21 SCANNING DIRECTIONS</p> <ul style="list-style-type: none"> • Figure 1,2: CN1, CN2 (addition) <p>P23 Timing characteristics</p> <ul style="list-style-type: none"> • CLK-Frequency: 40.0 (max.) → 42.0 (max.) (correction) <p>P25 Optical characteristics</p> <ul style="list-style-type: none"> • Contrast ratio: (600) typ. →(900) typ.(correction) • Chromaticity-White-Wx, Wy: TBD typ,. → 0.313 typ, 0.329 typ. (decision) • Viewing angle-Down: 50 min., 60 typ. → (70) min., (80) typ.(correction) • Note2: ... IL=50mA, ... → ... IL=50mA/One circuit, ... (correction)

PRELIMINARY

REVISION HISTORY

Edition	Document number	Prepared date	Revision contents and signature
5th edition	DOD-PP-0802	May 29, 2009	<p>Revision contents</p> <p>P28 Reliability Tests</p> <ul style="list-style-type: none"> • High temperature: (80 ± 3°C) → 80 ± 3°C • Heat cycle: (-30 ± 3°C) → -30 ± 3°C : (80 ± 3°C) → 80 ± 3°C • Thermal shock: (-30 ± 3°C) → -30 ± 3°C : (80 ± 3°C) → 80 ± 3°C <p>P31 Outline Drawings</p> <ul style="list-style-type: none"> • Front View: (16.4), (2.8) (elimination) <p>Writer</p> <p>Approved by <u>H. FUKUYOSHI</u> Checked by _____ Prepared by <u>A. KUMANO</u></p>
6th edition	DOD-PP-0830	July 1, 2009	<p>Revision contents</p> <p>CORRECTION OF DESCRIPTIVE CONTENTS</p> <p>P4 FEATURES</p> <ul style="list-style-type: none"> • Long life LED backlight type (ranking correction) <p>P5 GENERAL SPECIFICATIONS</p> <ul style="list-style-type: none"> • Backlight- Recommended part (Option) :"LED driving circuit" → "LED driver board" (correction) • Power consumption : (5.1) W (typ.) → (4.9) W (typ.) (correction) <p>P10 ELECTRICAL CHARACTERISTICS</p> <ul style="list-style-type: none"> • Backlight lamp- Forward current-Remarks : "Note3" (elimination) • Backlight lamp-Forward Voltage-VL:(correction) <ul style="list-style-type: none"> • 23.8(min.)(V), (21.6)(min.)(V) → 21.2(min.)(V), (19.28)(min.) • (27.0)(typ.)(V) → (24.0)(typ.)(V) • 30.6(max.)(V), 33.6(max.)(V), (34.4)(max.)(V) → 27.2(max.)(V), 29.84(max.)(V), 30.56(max.)(V) • "Note3 :See ... " (elimination) <p>P11 POWER SUPPLY VOLTAGE SEQUENCE</p> <ul style="list-style-type: none"> • "4.4.2 Backlight liting circuit" → "4.4.2 LED driver board" (correction) <p>P32 REAR VIEW</p> <ul style="list-style-type: none"> • Label location (addition) <p>Signature of writer</p> <p>Approved by  Checked by _____ Prepared by <u>A. Kumano</u></p> <p><u>H. FUKUYOSHI</u> _____ <u>A. KUMANO</u></p>