

Crystal Clock Oscillator

NZ2520SEA

High-precision Crystal Clock Oscillator

Application

- WiLAN, WiMAX, Bluetooth, PLC, UWB, Car-electronics connection.

Features

This device is a new SPXO of hold over frequency tolerance as tight as $\pm 15 \times 10^{-6}$ (-40 to $+85^\circ\text{C}$) by building a temperature compensating circuit in it. CMOS output despite temperature compensated circuit. This device reduces harmonics level to prevent the interference with the radio frequency by the wireless communication use.

- Overall Frequency Tolerance Max. $\pm 15 \times 10^{-6}$ at -40 to $+85^\circ\text{C}$.
- Harmonics level reduce.
- Conventional ratio about -17dBm at Output 40MHz , V_{CC} 2.8V , 2.4GHz band.
- Package Size : $2.5 \times 2.0 \times 0.9\text{mm}$



Pb Free

RoHS Compliant
Directive 2011/65/EU

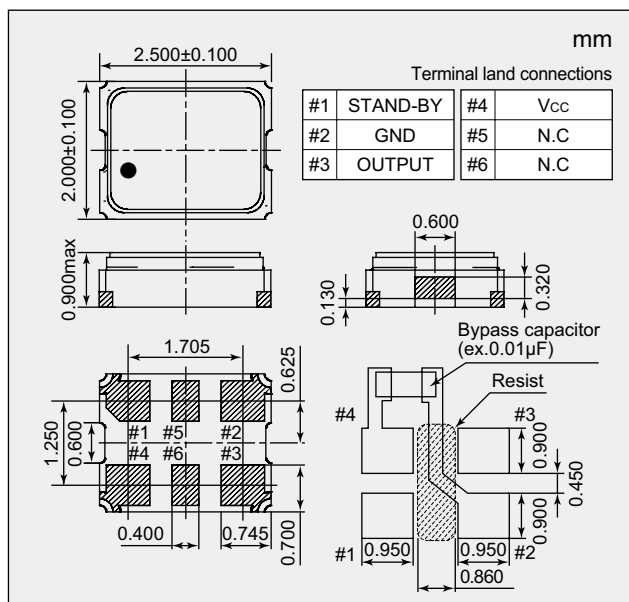
Absolute maximum rating
Supply Voltage (V_{CC}) -0.6 to $+6.0\text{V}$
Storage Temperature Range -55 to $+125^\circ\text{C}$

Specifications

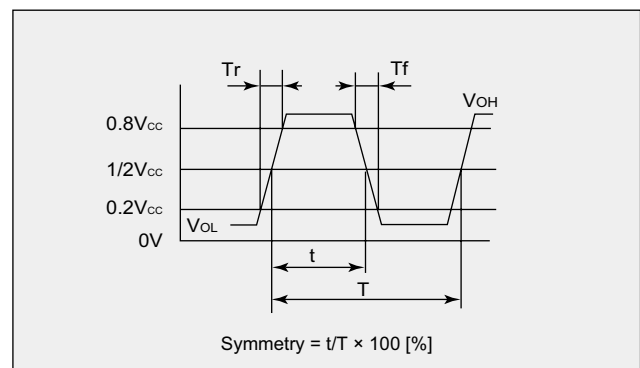
Item	Model	NZ2520SEA
Output Level		CMOS
Nominal Frequency Range	(MHz)	2.75 to 54
Overall Frequency Tolerance *1	($\times 10^{-6}$)	± 15
Operating Temperature Range	($^\circ\text{C}$)	-40 to $+85$
Supply Voltage	(V)	$+1.8$ to $+3.3$
Current Consumption Max.	During Operation	$+25^\circ\text{C}$ (mA)
	During Standby	$+25^\circ\text{C}$ (μA)
V_{OL} Max. / V_{OH} Min.	(V)	$0.2 V_{CC}$ / $0.8 V_{CC}$
T_r Max. / T_f Max.	(ns)	5 / 5 (at 0.2 to $0.8 V_{CC}$)
Symmetry Min. to Max.	(%)	45 to 55 (at $1/2 V_{CC}$)
Load (C_L) Max.	(pF)	15
Start-up Time Max.	(ms)	10
Standby function		Available (Three-state)

*1: Inclusive of $+25^\circ\text{C}$ tolerance, temp. characteristics, and supply voltage change.

Dimensions



Output Waveform <CMOS>



Standby Function

#1 Input	#3 Output
Level H ($0.8 V_{CC} \leq V_{IH} \leq V_{CC}$) or OPEN	Operating
Level L ($V_{IL} \leq 0.2 V_{CC}$)	High impedance

Crystal Clock Oscillator



NZ2520SEA

High-precision Crystal Clock Oscillator

■ Specification Number

Overall Frequency Tolerance	Operating Temperature Range(°C)	Supply Voltage (V)			
		+1.8±0.18	+2.5±0.25	+3.0±0.3	+3.3±0.33
±15×10 ⁻⁶	-40 to +85	NSA3513A	NSA3513B	NSA3513D	NSA3513C

Please specify the model name, frequency, and specification number when you order products.
For further questions regarding specifications, please feel free to contact us.