

GERMANIUM DIODE

Germanium diode in all glass construction for use in video detector circuits.

RATINGS (Limiting values according to the Absolute Maximum System as defined in IEC publication 134).

Voltages

Continuous reverse voltage	V_R	max.	15 V
Repetitive peak reverse voltage	V_{RRM}	max.	22.5 V

Currents

Forward current (d.c.)	I_F	max.	50 mA
Repetitive peak forward current	I_{FRM}	max.	150 mA
Non repetitive peak forward current ($t \leq 1$ s)	I_{FSM}	max.	400 mA

Temperature

Operating ambient temperature	T_{amb}	-50 to +75	$^{\circ}C$
-------------------------------	-----------	------------	-------------

CHARACTERISTICS $T_{amb} = 25^{\circ}C$

Forward voltage at $I_F = 0.1$ mA	V_F	0.1 to 0.25	V
-----------------------------------	-------	-------------	---

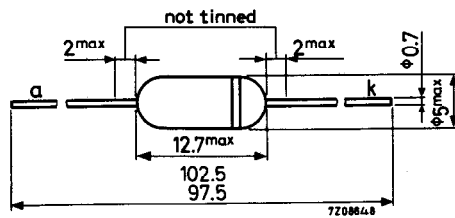
Reverse current at $V_R = 1.5$ V	I_R	1 to 30	μA
----------------------------------	-------	---------	---------

Diode capacitance	C_d	typ.	1 pF
-------------------	-------	------	------

MECHANICAL DATA

Dimensions in mm

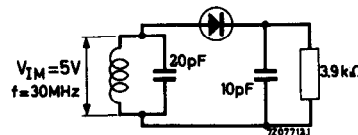
Net weight: 0.6 g



APPLICATION INFORMATION

Diode in video detector circuit

Efficiency: $\eta = 62\%$
Damping resistance: 3 k Ω



FOR NEW DESIGN THE SUCCESSOR TYPE OA90 IS RECOMMENDED

