



Bipolar Hall Effect Position Sensor

General Description

The OCH1440 is an integrated Hall effect latched sensor designed for electronic commutation of brush-less DC motor applications. The device includes an on-chip Hall voltage generator for magnetic sensing, a comparator that amplifies the Hall voltage, and a Schmitt trigger to provide switching hysteresis for noise rejection, and an integrated the pull-up resistor. An internal bandgap regulator is used to provide temperature compensated supply voltage for internal circuits and allows a wide operating supply range. To minimize the BOM cost, only one external component is needed to complete the application circuit.

Features

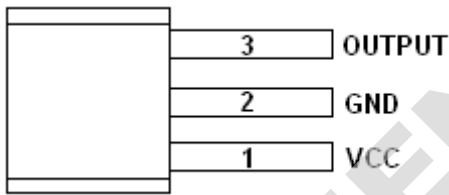
- Wide operating voltage range: 2.5V~20V
- Wide operating temperature range: -40°C ~+125°C
- Integrated pull-up resistor
- Package: SIP3 & SOT23-3L

Applications

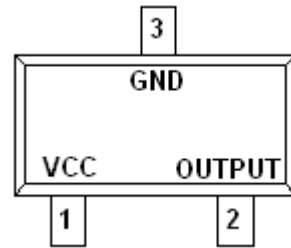
- Rotor Position Sensing
- Brush-less DC Fan
- Brush-less DC Motor
- Speed measurement
- Revolution counting

Pin Configuration

SIP-3L (Top View)



SOT23-3L (Top View)



Name	No.		Status	Description
	SIP3	SOT23-3L		
VCC	1	1	P	IC Power Supply
GND	2	3	P	IC Ground
Output	3	2	O	It is low state during the S magnetic field

Application Circuit

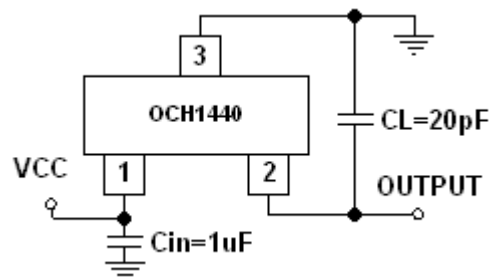
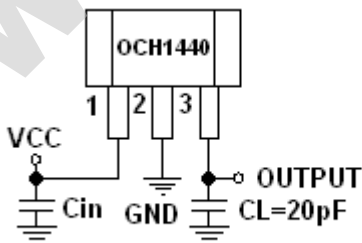
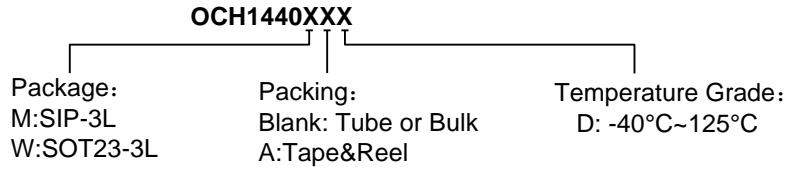


Fig 1, Typical Application Circuitry of OCH1440



■ Ordering Information



Part Number	Package Type	Packing Qty	Brp (Gauss)	Bop (Gauss)	Temperature	Eco Plan	Lead
OCH1440ME	SIP-3L	Bulk 1000pcs/bag	-80 ~ -5	5 ~ 80	-40~125°C	RoHS	Cu
OCH1440WAE	SOT23-3L	7-in reel 3000pcs/reel	-80 ~ -5	5 ~ 80	-40~125°C	Green	Cu

注：想进一步了解产品咨询，请直接点击[申请样品](#)。我们会第一时间联系您！谢谢！