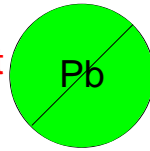


This component is RoHS compliant



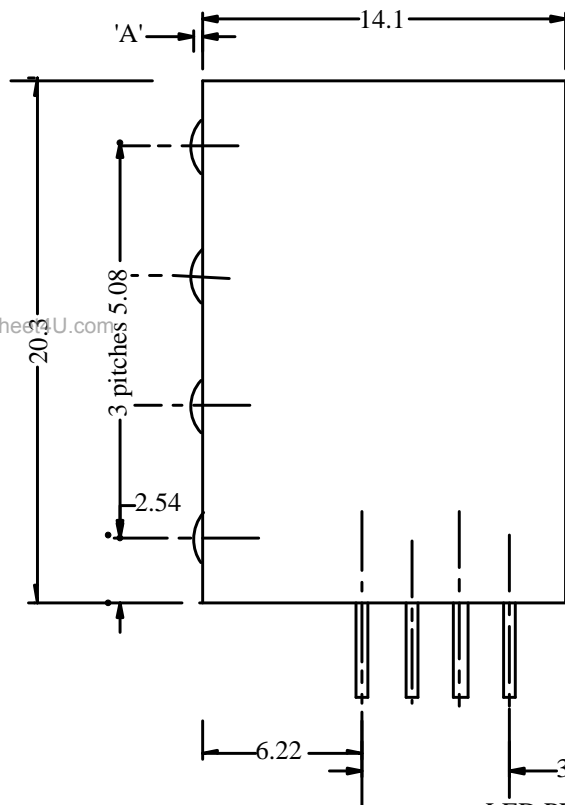
3mm LED CIRCUIT BOARD INDICATOR 4 TIER SHROUDED

The ORT43S is a 3mm LED Circuit Board Indicator Quad Level, and allows for LED mounting at 90 deg to a PCB. The housing is moulded in Black Nylon 6 which is flame retardant.

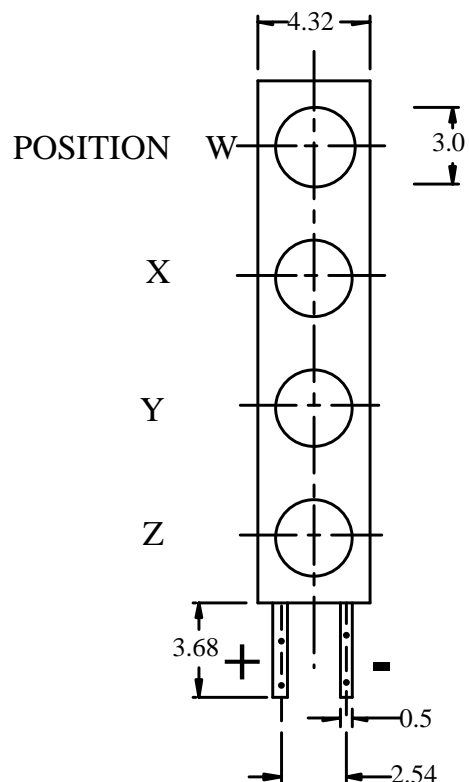
- Extended housing eliminates light bleed
- Housing assures proper LED alignment
- Single PC Board insertion – 4 LEDs
- Black case enhances contrast
- Baseplate ensure accurate pin alignment for easy board insertion.
- Equivalent to Dialight 568-221X series



MECHANICAL DATA



LED PROTRUSION
 RED, YELLOW, GREEN 'A'=0.2
 RED/GREEN BI-COLOUR 'A'=1.1



BEDFORD OPTO TECHNOLOGY LTD

1 BIGGAR BUSINESS PARK, BIGGAR, LANARKSHIRE ML12 6FX

Tel: +44 (0) 1899 221221 Fax: +44 (0) 1899 221009

Website: bot.co.uk E-mail: bill@bot.co.uk

Absolute Maximum Ratings (TA = 25°C)

PARAMETER	Red/Green	Hi-Eff Red	Green	Yellow	Orange
Continuous Forward Current	30mA	30mA	30mA	30mA	30mA
Peak Forward Current (1/10 @ 1Khz)	150mA	150mA	150mA	150mA	150mA
Power Dissipation	80mW	35mW	100mW	100mW	100mW
Reverse Current [Vr=5V]	100µA	100µA	100µA	100µA	100µA
Operating Temperature range	-40°C to +80°C	-40°C to +100°C			
Storage Temperature	-40°C to +85°C	-40°C to +100°C			
Lead Soldering Temperature (2.0mm from body)	260°C for 5secs				

Electro-Optical Data (TA = 25°C)

PARAMETER		Orange	Red	Green	Yellow	Red/Green
Forward Voltage [@20mA]	Max	2.6V	2.6V	2.6V	2.6V	2.6V
Luminous Intensity [@20mA]	Typ	70mcd	50mcd	70mcd	60mcd	Red- 35.0 mcd Green- 40.0 mcd
Viewing Angle		50deg	60deg	60deg	50deg	40deg
Peak Wavelength		610nm	635nm	568nm	585nm	Red- 635nm

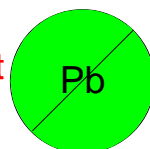
Ordering Information

ORT43SWXYZ where W, X, Y, Z = R = Red
G = Green
Y = Yellow
O = Orange
BC = Red/Green Bi-colour

For mixed colours a custom part number will be allocated.

www.DataSheet4U.com

This
component
is RoHS
compliant



BEDFORD OPTO TECHNOLOGY LTD
1 BIGGAR BUSINESS PARK, BIGGAR, LANARKSHIRE, ML12 6FX
Tel: +44 (0) 1899 221221 Fax: +44 (0) 1899 221009
Website: bot.co.uk E-mail: bill@bot.co.uk