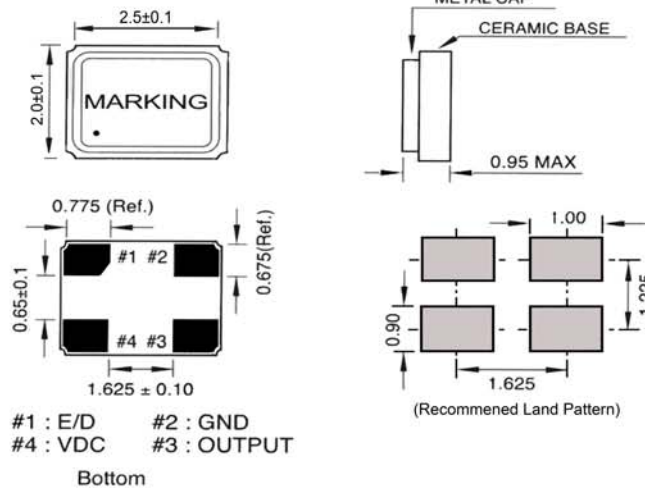


OCS-S22 Series: SMD Crystal Clock Oscillator 2.5x2.0 2.000 ~ 50.000MHz

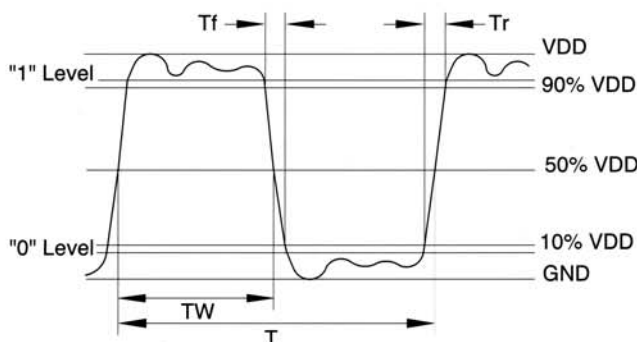
● SPECIFICATION

Model	OSC S22 SERIES		
Frequency range	2.000 ~ 50.000MHz		
Storage temperature range	- 55°C ~ +125°C		
Operating temperature range	-10°C ~ +70°C , -40°C ~ +85°C		
Frequency stability	±20ppm ~ ±50ppm		
Power supply voltage	3.3V±10%	2.5V±5%	1.8V±5%
Current consumption	2.000~9.999MHz:7mA max.	2.000~9.999MHz:6mA max.	2.000~9.999MHz:3mA max.
	10.000~19.999MHz:7mA max.	10.000~19.999MHz:8mA max.	10.000~19.999MHz:5mA max.
	20.000~31.999MHz:12mA max.	20.000~31.999MHz:8mA max.	20.000~31.999MHz:5mA max.
	32.000~50.000MHz:20mA max.	32.000~50.000MHz:20mA max.	32.000~50.000MHz:10mA max.
Output level	C-MOS		
Load	15pF max.		
Output voltage level	VOL:10%Vdd max. / VOH:90%Vdd min.		
Duty cycle	40%~60% at 1/2Vdd		
RISE / FALL TIME	2.000~9.999MHz:6nS max.	2.000~9.999MHz:7nS max.	2.000~9.999MHz:5nS max.
	10.000~19.999MHz:6nS max.	10.000~19.999MHz:7nS max.	10.000~19.999MHz:5nS max.
	20.000~31.999MHz:5nS max.	20.000~31.999MHz:6nS max.	20.000~31.999MHz:5nS max.
	32.000~50.000MHz:5nS max.	32.000~50.000MHz:6nS max.	32.000~50.000MHz:5nS max.
AGING	±3ppm/Year		

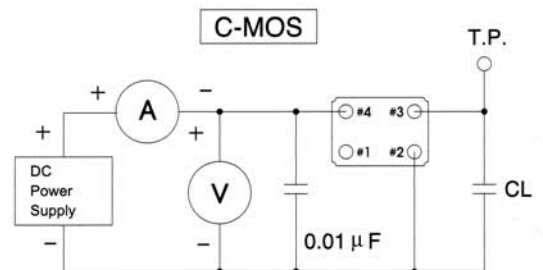
● DIMENSION (mm)



● OUTPUT WAVEFORM



● TEST CIRCUIT



*** Because S22 series has no by pass capacitor.
So, we recommend our customer to use capacitor 0.01µF in join Vcc and GND.