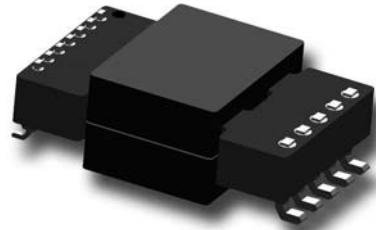


DC-DC SERIES: P022

Third generation of planar transformers

Features

- High power planar transformer for DC/DC converter.
- According UL1950 / EN60950.
- UL 94V0 material.
- Storage temperature from -20°C to 130°C.
- Operating temperature -20°C to 85°C.
- Power up to 100W.



Planar Transformers

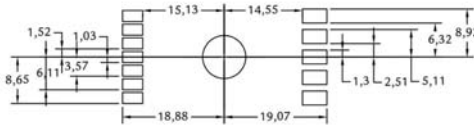
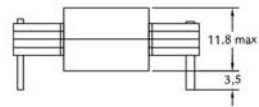
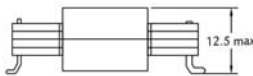
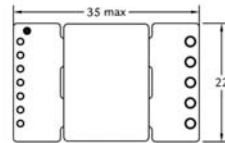
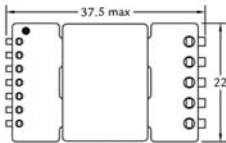
Electrical specifications

| Part Number | Input Voltage Vdc (V) | Output Voltage (V) | Output Current (A) | Power (W) | Frequency (kHz) | Duty cycle | Topology | Inductance ($\mu\text{H}\pm 25\%$) | Typ Leakage Inductance (μH) | Turns Ratio (Pri:Sec) | Max Total losses (W) |
|-------------|-----------------------|--------------------|--------------------|-----------|-----------------|------------|----------|--------------------------------------|--|-----------------------|----------------------|
| P022FW1CX1 | 36-72 | 3,3 | 30 | 100 | 200 | 0,47 | Forward | 350 | 0,5 | 9:2 | 2 |
| P022FW1CX2 | 36-72 | 5 | 20 | 100 | 200 | 0,42 | Forward | 275 | 0,5 | 8:3 | 2 |
| P022FW1CX3 | 36-72 | 12 | 8 | 100 | 200 | 0,47 | Forward | 275 | 0,5 | 8:6 | 2 |

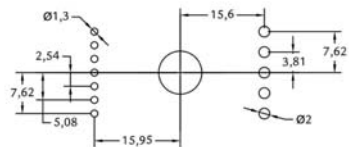
Notes

Replace X by S for SMD application and P for PTH application.

Dimensions

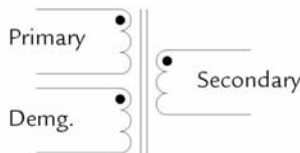


Recommended PCB layout



Recommended PCB layout

Schematics



FORWARD