

Rotary Potentiometer

P120 Series



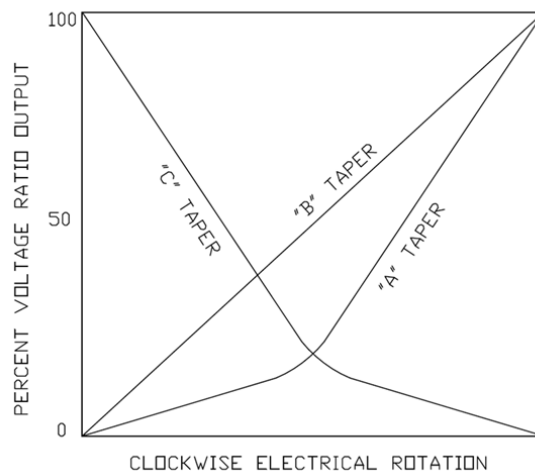
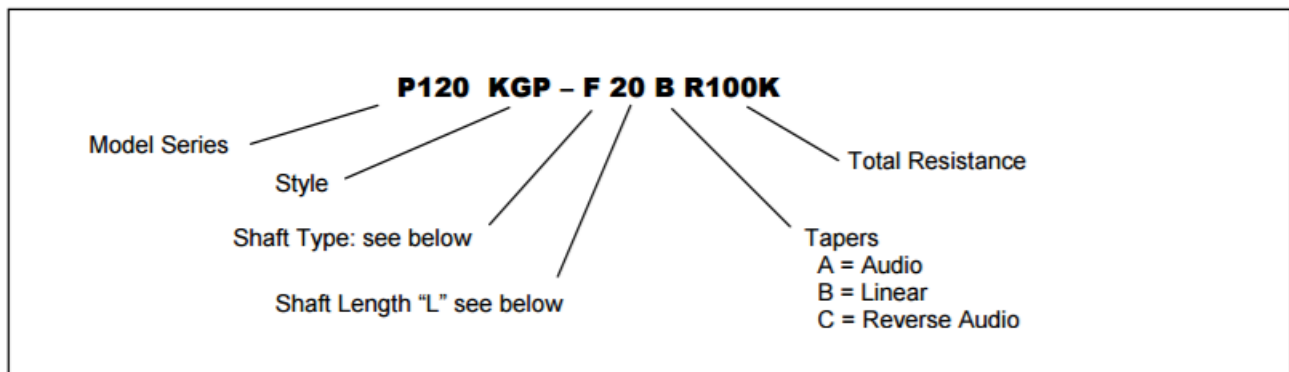
Features:

- 12 mm
- Conductive plastic element
- Single/dual unit
- 100,000 cycle life
- Insulated shaft
- RoHS compliant



Model Styles

| | |
|------------------------------------|---------|
| Side Adjust, PCB pins, Single unit | P120K |
| Top Adjust, PCB pins, Single unit | P120PK |
| Top Adjust, PCB pins, Dual unit | P120KGP |
| Side Adjust, PCB pins, Dual unit | P120KGE |



General Note
TT Electronics reserves the right to make changes in product specification without notice or liability. All information is subject to TT Electronics' own data and is considered accurate at time of going to print.

TT Electronics | BI Technologies
413 Rood RD, Suite 7
Calexico, CA 92231
Ph: +1 714 447 2345
www.ttelectronics.com/bi-technologies

Electrical Specifications

| | |
|-----------------------------------|---------------------|
| Resistance Range, Ohms | 1K- 1M |
| Standard Resistance Tolerance | ± 20% |
| Residual Resistance | 20 ohms max. |
| Input Voltage, maximum | 50 Vac max. |
| Power rating, Watts | 0.05w |
| Dielectric Strength | 300Vac, 1 minute |
| Insulation Resistance, Minimum | 100M ohms at 250Vdc |
| Sliding Noise | 100mV max. |
| Gang Error (Multi-ganged) | -40dB – 0dB, ±3dB |
| Actual Electrical Travel, Nominal | 260° |

Mechanical Specifications

| | |
|-------------------------|-------------------|
| Total Mechanical Travel | 300°± 10° |
| Static Stop Strength | 50 oz-in |
| Rotational Torque | 0.5 to 1.25 oz-in |

Environmental Specifications

| | |
|-----------------------------|----------------|
| Operating Temperature Range | -40°C to +85°C |
| Rotational Life | 100,000 cycles |

Shaft Types

| | F-TYPE | | | | | | | | Y-TYPE | | | | | | | | T-TYPE | | | | | |
|-------------|--------|----|----|----|----|----|----|----|--------|----|----|----|----|----|----|----|--------|----|----|----|----|--|
| | | | | | | | | | | | | | | | | | | | | | | |
| TOP ADJUST | L | 15 | 17 | 20 | 25 | 30 | 35 | 40 | L | 15 | 20 | 25 | 30 | 35 | 40 | L | 15 | 20 | 25 | 30 | 35 | |
| | T | 5 | 7 | 7 | 12 | 12 | 12 | 12 | T | 5 | 8 | 12 | 12 | 12 | 12 | T | 5 | 7 | 7 | 12 | 12 | |
| SIDE ADJUST | L | 10 | 15 | 20 | 25 | 30 | L | 10 | 15 | 20 | 25 | 30 | L | 10 | 15 | 20 | 25 | 30 | | | | |
| | T | 5 | 8 | 12 | 12 | 12 | T | 5 | 8 | 12 | 12 | 12 | T | 5 | 7 | 7 | 12 | 12 | | | | |

Standard Resistance Values, Ohms

1K 2K 5K 10K 20K 50K 100K 200K 500K 1MEG

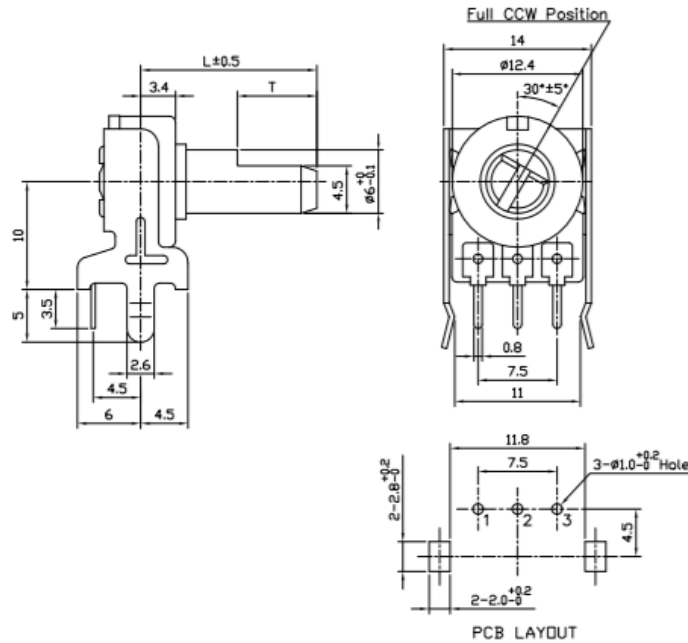
CIRCUIT DIAGRAM

Unless otherwise specified

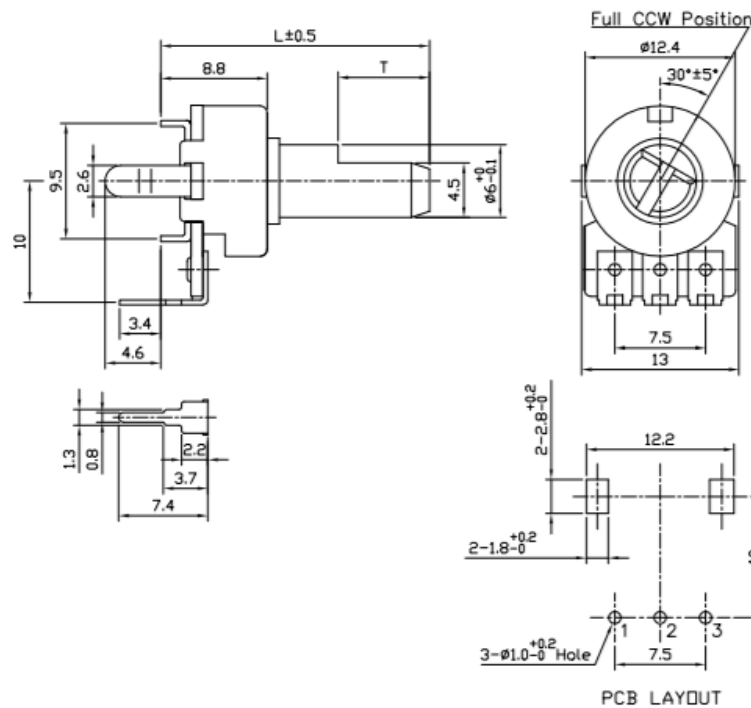


Outline Drawings

Model P120K (Side Adjust, PCB pins, Single unit)



Model P120PK (Top Adjust, PCB pins, Single unit)



General Note

TT Electronics reserves the right to make changes in product specification without notice or liability. All information is subject to TT Electronics' own data and is considered accurate at time of going to print.

© TT electronics plc

TT Electronics | BI Technologies
 413 Rood RD, Suite 7
 Calexico, CA 92231
 Ph: +1 714 447 2345
www.ttelectronics.com/bi-technologies

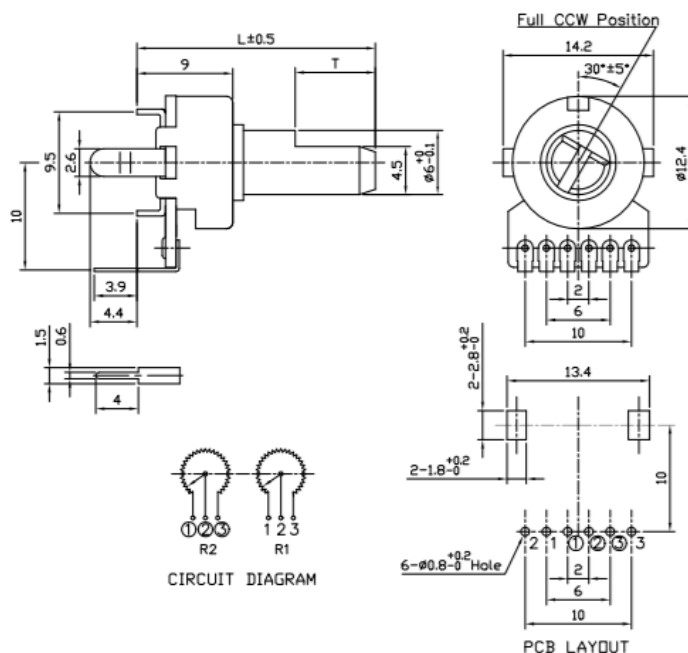
Rotary Potentiometer

P120 Series

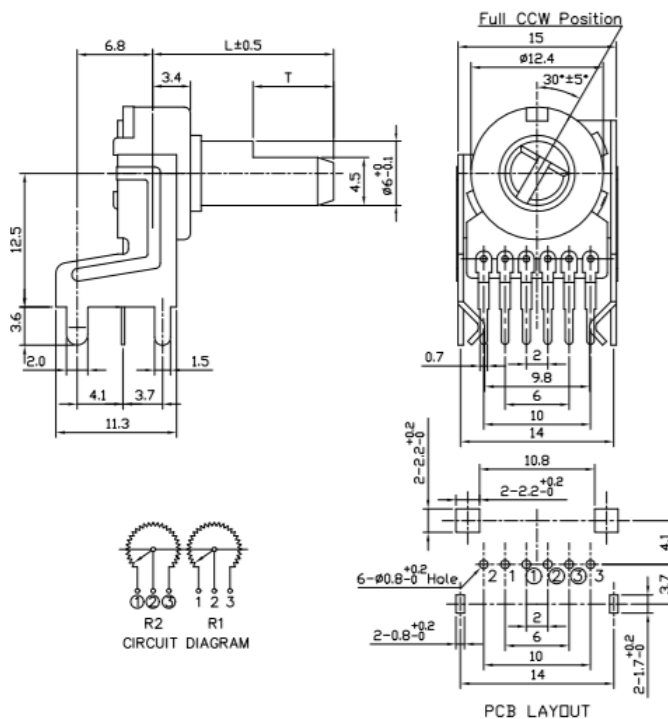


Outline Drawings

Model P120KGP (Top Adjust, PCB pins, Dual unit)



Model P120KGE (Side Adjust, PCB pins, Dual unit)



General Note
 TT Electronics reserves the right to make changes in product specification without notice or liability. All information is subject to TT Electronics' own data and is considered accurate at time of going to print.

© TT electronics plc

TT Electronics | BI Technologies
 413 Rood RD, Suite 7
 Calexico, CA 92231
 Ph: +1 714 447 2345
 www.ttelectronics.com/bi-technologies