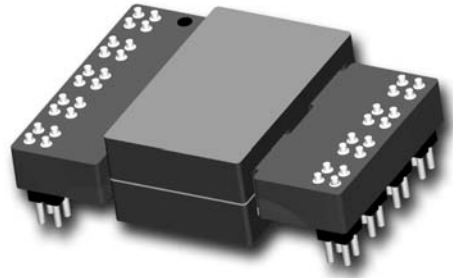


AC-DC SERIES: P232

Third generation of planar transformers

Features

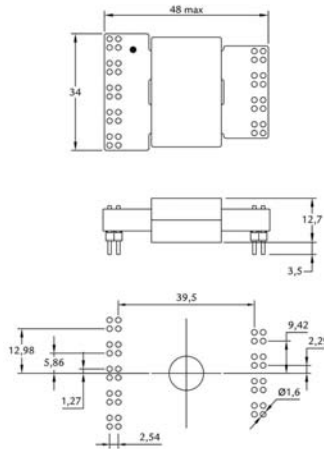
- High power planar transformer for AC/DC SMPS.
- According UL1950 / EN60950.
- UL 94V0 material.
- Storage temperature from -20°C to 130°C.
- Operating temperature -20°C to 85°C.
- Power up to 300W.



Electrical specifications

| Part Number | Input Voltage Vdc (V) | Output Voltage (V) | Output Current (A) | Power (W) | Frequency (kHz) | Duty cycle | Topology | Inductance (mH±25%) | Typ Leakage Inductance (µH) | Turns Ratio (Pri:Sec) | Max Total losses (W) |
|-------------|-----------------------|--------------------|--------------------|-----------|-----------------|------------|--------------|---------------------|-----------------------------|-----------------------|----------------------|
| P232WD4DP1 | 350-420 | 12 | 25 | 300 | 150 | 0,45 | Forward dual | 9,43 | 0,9 | 13:1 | 5 |
| P232PP4DP1 | 350-420 | 24 | 12,5 | 300 | 150 | 0,47 | Push - Pull | 9,43 | 0,9 | 13:1 | 5 |
| P232PP4DP2 | 350-420 | 48 | 6,25 | 300 | 150 | 0,45 | Push - Pull | 9,43 | 0,9 | 13:2 | 5 |

Dimensions



Recommended PCB layout

Schematics

