

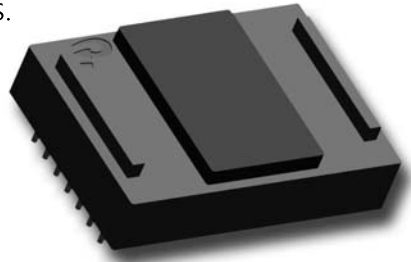
# AC-DC SERIES: P243

## Third generation of planar transformers

Planar Transformers

### Features

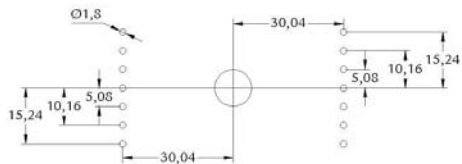
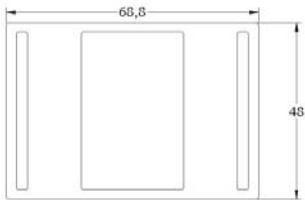
- High power planar transformer for AC/DC SMPS.
- According UL1950 / EN60950.
- UL 94V0 material.
- Storage temperature from -20°C to 130°C.
- Operating temperature -20°C to 85°C.
- Power up to 600W.



### Electrical specifications

Part Number	Input Voltage Vdc (V)	Output Voltage (V)	Output Current (A)	Power (W)	Frequency (kHz)	Duty cycle	Topology	Inductance (mH±25%)	Typ Leakage Inductance (µH)	Turns Ratio (Pri:Sec)	Max Total losses (W)
P243HB4DP1	350-420	12	50	600	100	0,45	Half Bridge	4,61	2	12:1	7
P243PP4DP1	350-420	24	25	600	100	0,43	Push - Pull	10,36	2	13:1	7
P243FB4DP1	350-420	48	12,5	600	100	0,46	Full - Bridge	12,17	2	13:2	6

### Dimensions



Recommended PCB layout

### Schematics

