

## ELECTRONIC DEVICES, INC.

AN AMERICAN ELECTRONIC COMPONENTS COMPANY  
21 GRAY OAKS AVENUE • YONKERS, NEW YORK 10710  
914-965-4400 • FAX 914-965-5531 • TELEX 681-8047



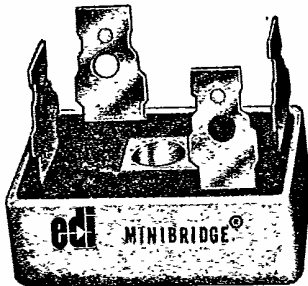
SERIES  
PA  
PB  
PW


# MINIBRIDGE®

## 15, 25, 30 AMPERES

### SINGLE - PHASE FULL - WAVE BRIDGES

### HEAT SINK AND CHASSIS MOUNTING



 This mark indicates recognition under the component program of Underwriters Laboratories, Inc.

I <sub>F</sub> (Avg.)	Series	PRV-leg						
		50	100	200	400	600	800	1000
15A.	PA Series	PA05	PA10	PA20	PA40	PA60	PA80	PA100
25A.	PB Series	PB05	PB10	PB20	PB40	PB60	PB80	PB100
30A.	PW Series	PW05	PW10	PW20	PW40	PW60	PW80	PW100

ELECTRICAL CHARACTERISTICS PER LEG (at T <sub>A</sub> = 25°C Unless Otherwise Specified)	SERIES			UNITS
	PA	PB	PW	
Max. Forward Voltage Drop, V <sub>F</sub> = 1.0 V @ I <sub>F</sub> =	2	3	12	Amp.
Max. DC Reverse Current @ PRV and 25°C, I <sub>R</sub>	10	10	10	μA
Max. DC Reverse Current @ PRV and 100°C, I <sub>R</sub>	100	100	100	μA
Max. Peak Surge Current, I <sub>FSM</sub> (8.3 ms)	200	300	400	Amp
Thermal Resistance (Total), R <sub>θJ-C</sub>	3.0 typ.	2.4 typ.	2.0 typ.	°C/W
Storage Temperature Range, T <sub>stg</sub>	-55 to +175			°C

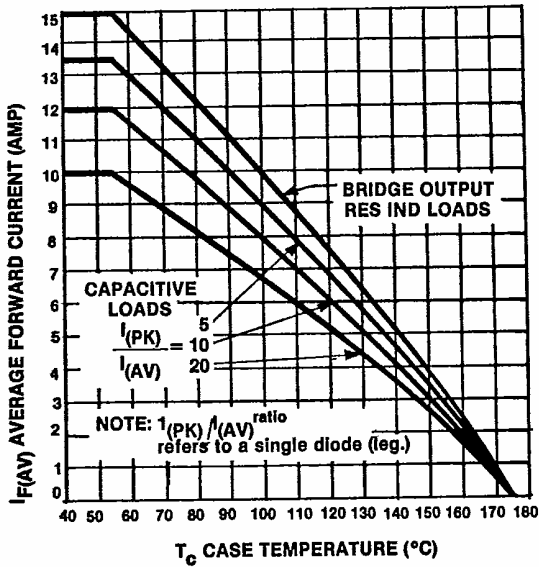
EDI reserves the right to change these specifications at any time without notice.



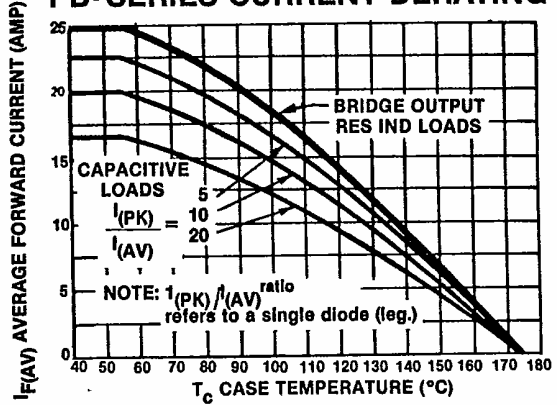
DESIGNERS AND MANUFACTURERS OF SOLID STATE DEVICES SINCE 1951

SI 2097

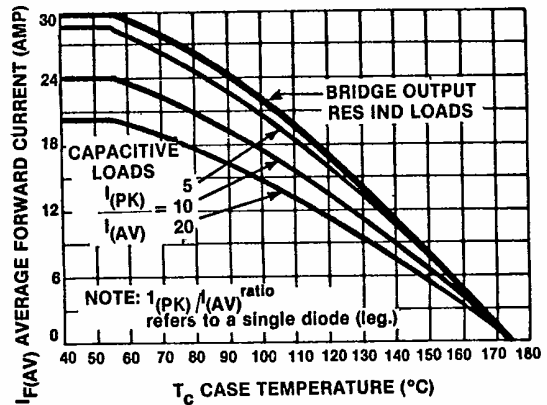
**Figure 1a**  
**PA SERIES CURRENT DERATING**



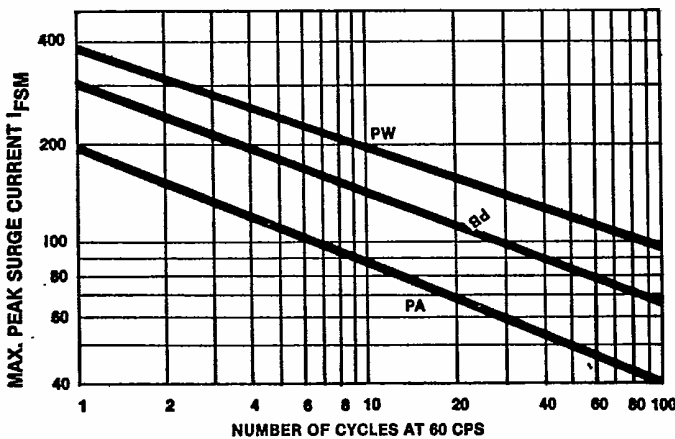
**Figure 1b**  
**PB-SERIES CURRENT DERATING**



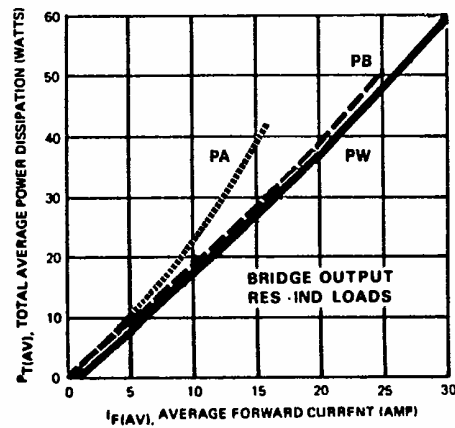
**Figure 1c**  
**PW SERIES CURRENT DERATING**



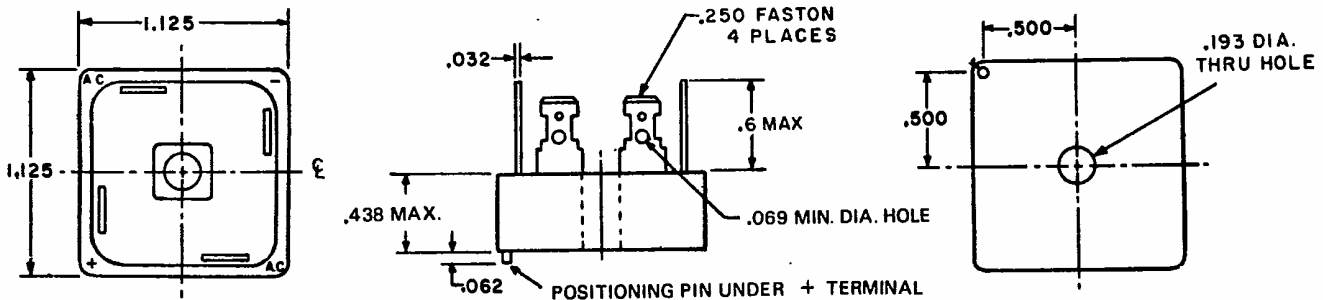
**Figure 2**  
**NON-REPETITIVE SURGE CURRENT**



**Figure 3**  
**POWER DISSIPATION**



**PA, PB, PW SERIES MECH. OUTLINE**  
Dielectric test voltage 1500 volts rms, max. 50-60 Hz



- NOTES:**
1. Corrosion resistant terminals designed for .250 female quick connector, wrap around or solder.
  2. A thin film of silicone thermal compound is recommended between the MiniBridge® case and mounting surface for improved thermal conduction.
  3. Bridges available without positioning pin. Consult factory.