

PC-TFT-2535PA-LED

Interface Board

Features

- Used for TFT-LCD display: 2.5"/3.5" AND-TFT-25PA
- Compact, light, thin and small
- Short circuit protection
- Low EMI interference
- External pin to allow user to adjust color, brightness and contrast.

The PC-TFT-2535PA-LED is designed to work with the AND-TFT-25PA and the AND-TFT-35PA color TFT display which is suitable for security, video game, door phone, video phone, portable TV and instrument display applications..

Mechanical Characteristics

Item	Specification	Unit
Outline Dimension	62.5 (W) x 52 (H) x 7.5 (D)	mm
Weight	20	g

Absolute Maximum Rating

Item	Symbol	Conditions	Min.	Max.	Unit
Operating Temperature	Top	–	0	60	°C
Storage Temperature	Tstg	–	-30	80	°C

DC to DC Converter

Voltage (V)	Current (mA)	Total Regulation			Ripple & Noise (mV)
		Min.	Typ.	Max.	
+5V	50-100	4.8	5.0	5.1	50
+7.5V	6~10	7	9.1	9.5	200
+15V	5~5	12	15	16	200
-12V	2-5	-9	-12	-15	200

Input

Characteristics:

Typical Input Voltage: 8V DC

Input Voltage Range: 6VDC to 15 VDC

Input Current: 150mA, Typical at 12VDC with panel load.

Inrush Current Max: 250mA at 6VDC, 130mA at 15VDC Cold start at 25C, 5.0VDC with panel load.

Sync. Pulse: 60KHz Typical

Product specifications contained herein may be changed without prior notice.
It is therefore advisable to contact Purdy Electronics before proceeding with the design of equipment incorporating this product.

Terminal Pin Assignment

Pin No.	Symbol	I/O	Description	Remarks
1	+5V	O	5.0V output	-
2	COL	I	color adj.	-
3	BRT	I	brightness adj.	-
4	CNT	I	contrast adj.	-
5	Video	I	composite video signal	The signal resistance is 75Ω, 1V p-p.
6	U/P	I	up/down scan control	+5V or GND
7	R/L	I	left/right scan control	+5V or GND
8	GND	I	ground	-
9	GND	I	ground	-
10	+12V	I	+12V DC power input	-
11	HSY	O	HSY output	-
12	VSY	O	VSY output	-

Connector:

Pin No: FC12D (Bottom Contact)

Pitch: FC 1.0mm

Output Characteristics:

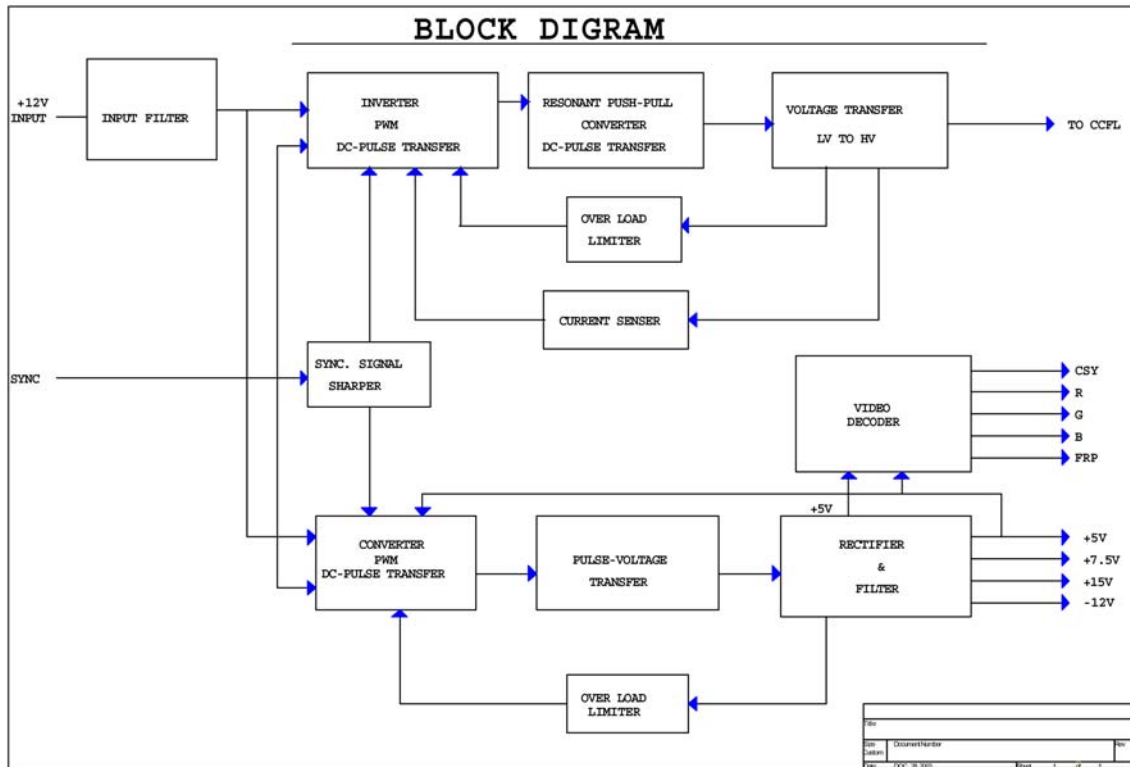
DC to DC Backlight Inverter:

Starting Voltage: 15.8VDC, typical at 6.0 VDC

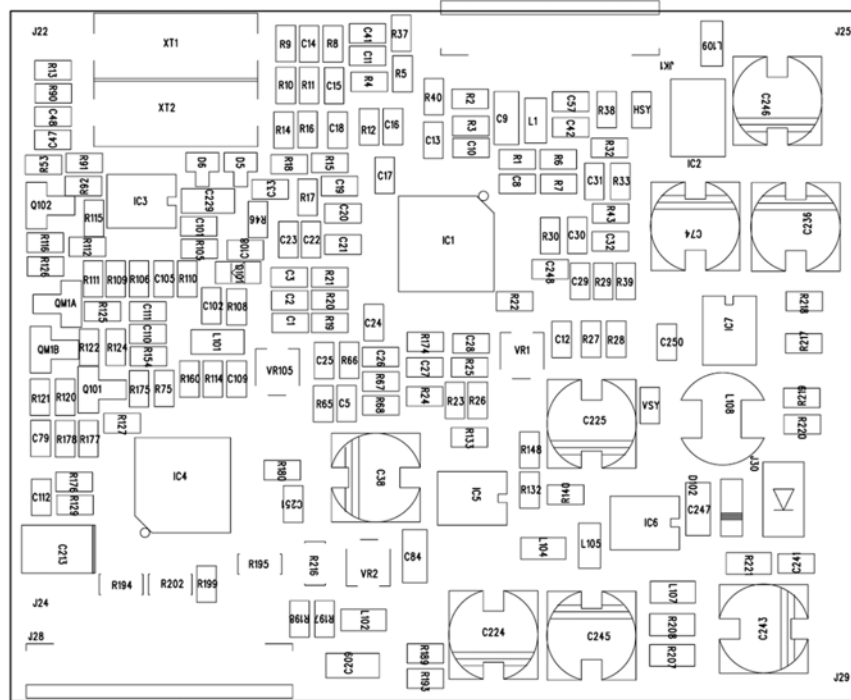
Working Voltage: 16.0 VDC, typical at 15 VDC

Working Current: DC 10mA ± 20% typical for general application.

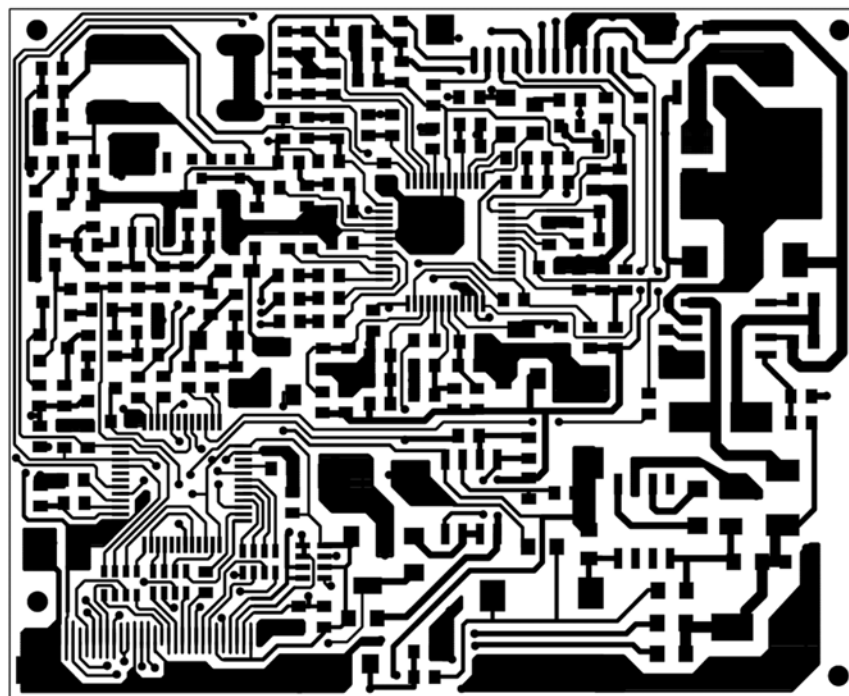
Block Diagram



Dimensional Outline



PIN 1 CON1 PIN 12



PIN 1 CON2 PIN 30 2003.11.15

Dimensional Outline

