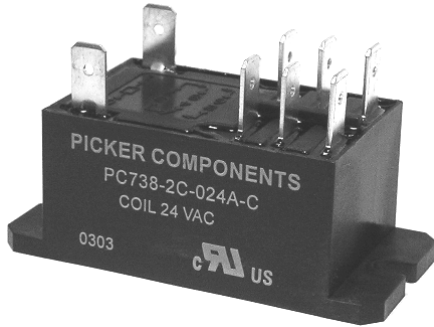


## Two Pole Heavy Duty Power Relay

## PC738



### FEATURES

- Two poles of heavy duty switching
- Up to 30 amp switching capacity
- Up to 2.5 horsepower rating
- Meets 8mm creepage distance
- 4KV dielectric
- UL Class F insulation standard
- Dust cover or sealed version available
- QC or PCB terminals



File # E93379

### UL/CUR RATINGS

Load Type	Voltage	2 Form A (DPST-NO)	2 Form C (DPDT)	
			NO	NC
General Purpose	120 VAC	30 A	30 A	3 A
	277 VAC	30 A	30 A	3 A
	28 VDC	20 A	20 A	3 A
Resistive	120 VAC	30 A	30 A	3 A
	240 VAC	30 A	30 A	3 A
Motor	250 VAC	2.5 HP	2.5 HP	—
	120 VAC	1 HP	1 HP	—
LRA/FLA (locked rotor amps/full load amps)	240 VAC	110 A/25.3 A	110 A/25.3 A	—
	120 VAC	110 A/25.3 A	110 A/25.3 A	—
Tungsten	240 VAC	TV 10	TV 10	—
	120 VAC	TV 10	TV 10	—

### CONTACT DATA

<b>Material</b>		AgCdO (Silver Cadmium Oxide)
<b>Initial Contact Resistance</b>		50 milliohms max @ 1A, 6VDC
<b>Service Life</b>	<b>Mechanical</b>	5 X 10 <sup>6</sup> Operations
	<b>Electrical</b>	1 X 10 <sup>5</sup> Operations

### CHARACTERISTICS

<b>Operate Time</b>	15 ms. typical
<b>Release Time</b>	10 ms. typical
<b>Insulation Resistance</b>	1,000 megohms min, at 500VDC, 50%RH
<b>Dielectric Strength</b>	4000 Vrms, 1 min. between coil and contacts 1500 Vrms, 1 min. between open contacts 2000 Vrms, 1 min. between contact poles
<b>Shock Resistance</b>	10 g, 11ms, functional; 100 g, destructive
<b>Vibration Resistance</b>	DA 1.65mm, 10-55 Hz
<b>Power Consumption</b>	DC coil 1.7W, AC coil 4 VA
<b>Ambient Temperature Range</b>	DC coil: -55 to 85 C, AC coil: -55 to 65 C operating, -40 to 130 C storage
<b>Weight</b>	86 grams approx.

PC738 Rev B 3-25-04

## ORDERING INFORMATION

Example:	PC738	-2A	-120	A	-C	P
Model						
Contact Form						
2A or 2C						
Coil Voltage						
Voltage Type						
A: AC Coil, D: DC Coil						
Case Type						
S: Sealed, C: Dust Cover						
Termination Type						
Nil: QC Lugs, P: PC Terminals						

## COIL DATA

Voltage Type	Coil Voltage	Resistance ohms $\pm$ 10%		Coil Power	Must Operate Voltage Max. (VDC or VAC)	Must Release Voltage Min. (VDC or VAC)
DC	5	15.3		1.7 W	3.8	0.5
	6	22			4.5	0.6
	12	86			9.0	1.2
	24	350			18	2.4
	48	1390			36	4.8
	110	7255			83	11.0
AC Frequency		60 Hz	50 Hz			
AC	12	9.1	12.1	4.0 VA	9.0	2.4
	24	39	52		19.2	4.8
	120	950	1390		96.0	24
	208	2841	3800		166.4	41.6
	240	3800	5200		192	48
	277	5485	7255		221	55.4

Note: Consult factory for 50 Hz ordering information.

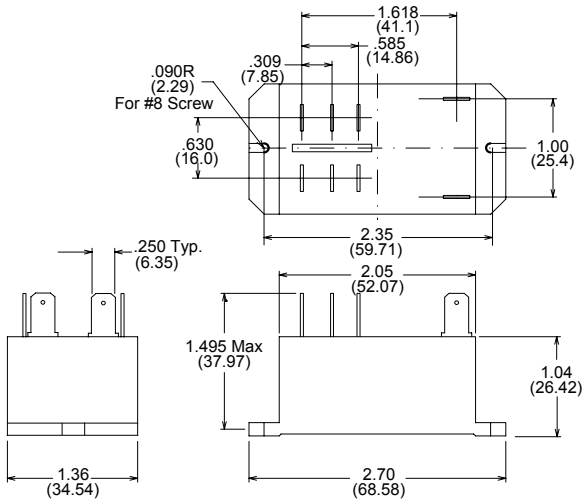


3220 Commander Drive, Suite 102, Carrollton, Texas 75006

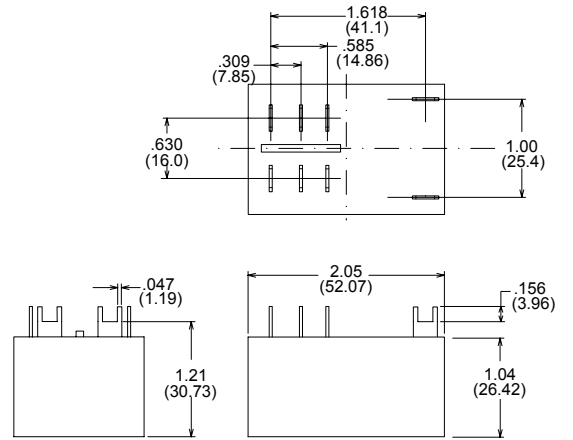
Sales: Call Toll Free (888) 997-3933 Fax (818) 342-5296 email: pickerwest@sbcglobal.net URL: pickercomponents.com

Overall Dimensions  
Inches (millimeters)

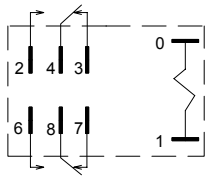
Quick Connect



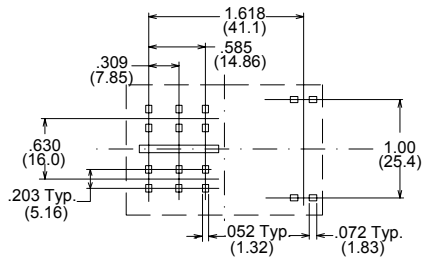
PC Terminal



Wiring Schematic



PC Board Hole Pattern  
Bottom View



Notes:

- Tolerances  $\pm .010$  unless otherwise noted
- .187 QC terminals available for coil connections
- Consult factory for ordering information



3220 Commander Drive, Suite 102, Carrollton, Texas 75006

Sales: Call Toll Free (888) 997-3933 Fax (818) 342-5296 email: pickerwest@sbcglobal.net URL: pickercomponents.com