

## 8-INPUT MULTIPLEXER/REGISTER; 3-STATE

## FEATURES

- Non-transparent data latches
- Transparent address latch
- Easily expanding
- Complementary outputs
- Output capability: bus driver
- I<sup>2</sup>C category: MSI

## GENERAL DESCRIPTION

The 74HC/HCT356 are high-speed Si-gate CMOS devices and are pin compatible with low power Schottky TTL (LSSTTL). They are specified in compliance with JEDEC standard no. 7A.

The 74HC/HCT356 data selectors/multiplexers contain full on-chip binary decoding, to select one-of-eight data sources. The data select address is stored in transparent latches that are enabled by a LOW on the latch enable input  $\overline{LE}$ .

Data on the 8 input lines ( $D_0$  to  $D_7$ ) is clocked into an edge-triggered data register by a LOW-to-HIGH transition of the clock (CP).

When the output enable input  $\overline{OE}_1 = \text{HIGH}$ ,  $\overline{OE}_2 = \text{HIGH}$  or  $\overline{OE}_3 = \text{LOW}$ , the outputs go to the high impedance OFF-state.

Operation of these output enable inputs does not affect the state of the latches and register.

SYMBOL	PARAMETER	CONDITIONS	TYPICAL		UNIT
			HC	HCT	
$t_{PHL}/t_{PLH}$	propagation delay $S_n, \overline{LE}$ to $Y, \overline{Y}$ CP to $Y, \overline{Y}$	$C_L = 15 \text{ pF}$ $V_{CC} = 5 \text{ V}$	24 20	25 22	ns ns
$C_I$	input capacitance		3.5	3.5	pF
$C_{PD}$	power dissipation capacitance per package	notes 1 and 2	123	125	pF

GND = 0 V;  $T_{amb} = 25^\circ\text{C}$ ;  $t_r = t_f = 6 \text{ ns}$

## Notes

1.  $C_{PD}$  is used to determine the dynamic power dissipation ( $P_D$  in  $\mu\text{W}$ ):

$$P_D = C_{PD} \times V_{CC}^2 \times f_i + \Sigma (C_L \times V_{CC}^2 \times f_o) \text{ where:}$$

$$f_i = \text{input frequency in MHz} \quad C_L = \text{output load capacitance in pF}$$

$$f_o = \text{output frequency in MHz} \quad V_{CC} = \text{supply voltage in V}$$

$$\Sigma (C_L \times V_{CC}^2 \times f_o) = \text{sum of outputs}$$

2. For HC the condition is  $V_I = \text{GND to } V_{CC}$   
For HCT the condition is  $V_I = \text{GND to } V_{CC} - 1.5 \text{ V}$

## PACKAGE OUTLINES

20-lead DIL; plastic (SOT146).

20-lead mini-pack; plastic (SO20; SOT163A).

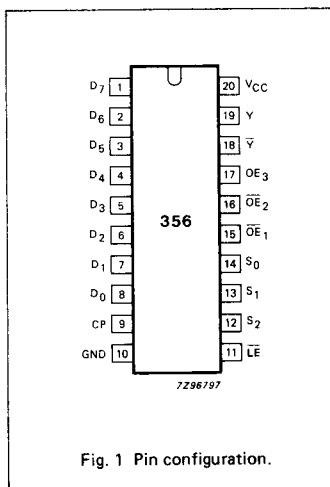


Fig. 1 Pin configuration.

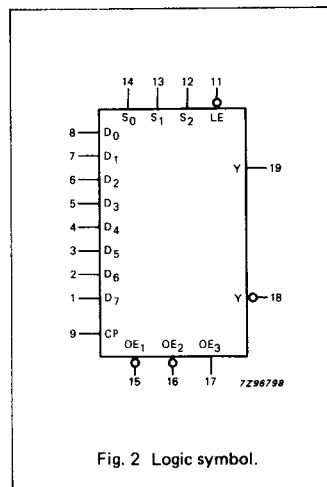


Fig. 2 Logic symbol.

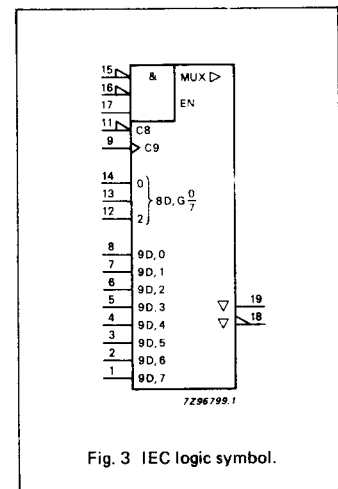


Fig. 3 IEC logic symbol.

74HC/HCT356

MSI

## PIN DESCRIPTION

PIN NO.	SYMBOL	NAME AND FUNCTION
8, 7, 6, 5, 4, 3, 2, 1	D <sub>0</sub> to D <sub>7</sub>	data inputs
9	CP	clock input data (LOW-to-HIGH, edge-triggered)
10	GND	ground (0 V)
11	$\overline{LE}$	address latch enable input (active LOW)
14, 13, 12	S <sub>0</sub> , S <sub>1</sub> , S <sub>2</sub>	select inputs
15, 16	$\overline{OE}_1$ , $\overline{OE}_2$	output enable inputs (active LOW)
17	OE <sub>3</sub>	output enable input (active HIGH)
18	Y	3-state multiplexer output (active LOW)
19	Y	3-state multiplexer output (active HIGH)
20	V <sub>CC</sub>	positive supply voltage

## FUNCTION TABLE

INPUTS				OUTPUTS					DESCRIPTION
ADDRESS *			CP	OUTPUT ENABLE			Y	$\overline{Y}$	
S <sub>2</sub>	S <sub>1</sub>	S <sub>0</sub>		$\overline{OE}_1$	$\overline{OE}_2$	OE <sub>3</sub>			
X	X	X	X	H	X	X	Z	Z	outputs in high impedance OFF-state
X	X	X	X	X	H	X	Z	Z	
X	X	X	X	X	X	L	Z	Z	
L	L	L	↑	L	L	H	D <sub>0n</sub>	$\overline{D}_{0n}$	data is clocked into latch
L	L	L	↑	L	L	H	D <sub>1n</sub>	$\overline{D}_{1n}$	
L	H	L	↑	L	L	H	D <sub>2n</sub>	$\overline{D}_{2n}$	
L	H	H	↑	L	L	H	D <sub>3n</sub>	$\overline{D}_{3n}$	
H	L	L	↑	L	L	H	D <sub>4n</sub>	$\overline{D}_{4n}$	
H	L	H	↑	L	L	H	D <sub>5n</sub>	$\overline{D}_{5n}$	
H	H	L	↑	L	L	H	D <sub>6n</sub>	$\overline{D}_{6n}$	
H	H	H	↑	L	L	H	D <sub>7n</sub>	$\overline{D}_{7n}$	
L	L	L	**	L	L	H	D <sub>0p</sub>	$\overline{D}_{0p}$	outputs do not change states
L	L	H	**	L	L	H	D <sub>1p</sub>	$\overline{D}_{1p}$	
L	H	L	**	L	L	H	D <sub>2p</sub>	$\overline{D}_{2p}$	
L	H	H	**	L	L	H	D <sub>3p</sub>	$\overline{D}_{3p}$	
H	L	L	**	L	L	H	D <sub>4p</sub>	$\overline{D}_{4p}$	
H	L	H	**	L	L	H	D <sub>5p</sub>	$\overline{D}_{5p}$	
H	H	L	**	L	L	H	D <sub>6p</sub>	$\overline{D}_{6p}$	
H	H	H	**	L	L	H	D <sub>7p</sub>	$\overline{D}_{7p}$	

D<sub>0n</sub> to D<sub>7n</sub> = data present at inputs D<sub>0</sub> to D<sub>7</sub> when the data latch clock made the transition from LOW-to-HIGH

D<sub>0p</sub> to D<sub>7p</sub> = data previously latched into the data latch by the LOW-to-HIGH transition of the data latch clock

H = HIGH voltage level

L = LOW voltage level

X = don't care

↑ = LOW-to-HIGH CP transition

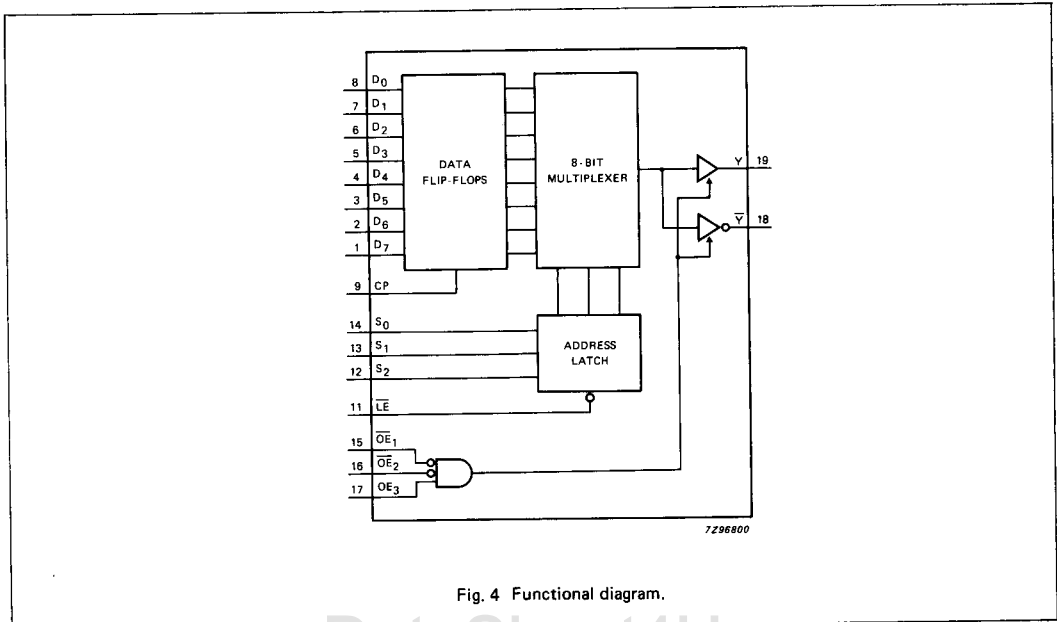
↓ = HIGH-to-LOW CP transition

Z = high impedance OFF-state

\* This column shows the input address set-up with  $\overline{LE}$  = LOW (address latch is transparent).

\*\* CP is HIGH, LOW or ↓.

www.DataSheet4U.com



www.DataSheet4U.com

**74HC/HCT356**  
MSI

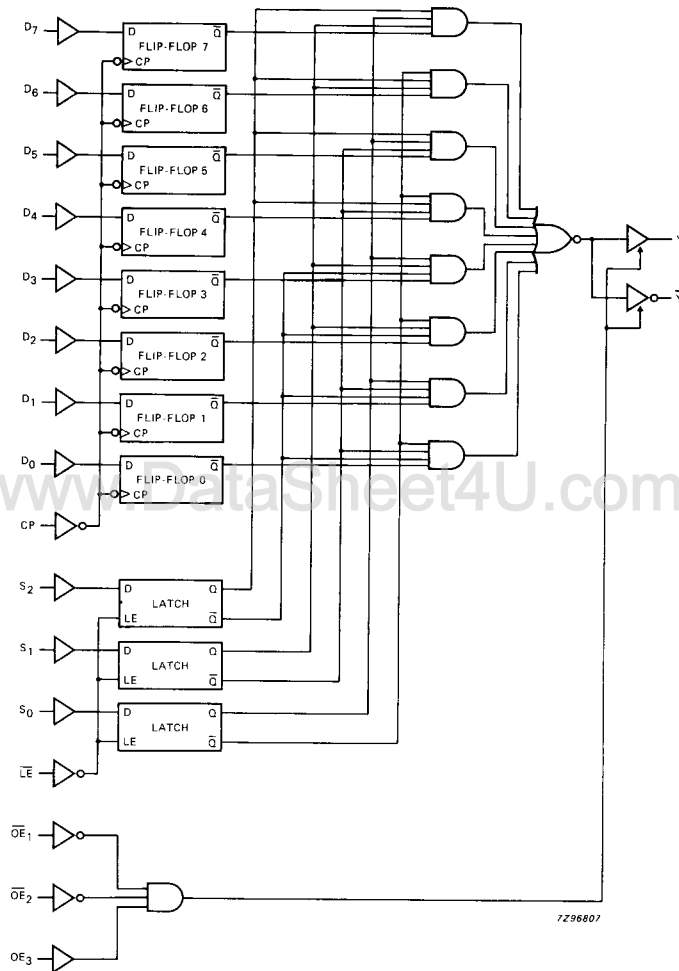


Fig. 5 Logic diagram.

**DC CHARACTERISTICS FOR 74HC**

For the DC characteristics see chapter "HCMOS family characteristics", section "Family specifications".

Output capability: bus driver

I<sub>CC</sub> category: MSI**AC CHARACTERISTICS FOR 74HC**GND = 0 V; t<sub>r</sub> = t<sub>f</sub> = 6 ns; C<sub>L</sub> = 50 pF

SYMBOL	PARAMETER	T <sub>amb</sub> (°C)						UNIT	TEST CONDITIONS	
		74HC							V <sub>CC</sub> V	WAVEFORMS
		+25			-40 to +85		-40 to +125			
		min.	typ.	max.	min.	max.	min.		max.	
t <sub>PHL</sub> / t <sub>PLH</sub>	propagation delay CP to Y, $\bar{Y}$	66 24 19	240 48 41		300 60 51		360 72 61	ns	2.0 4.5 6.0	Fig. 6
t <sub>PHL</sub> / t <sub>PLH</sub>	propagation delay S <sub>n</sub> to Y, $\bar{Y}$	77 28 22	260 52 44		325 65 55		390 78 66	ns	2.0 4.5 6.0	Fig. 7
t <sub>PHL</sub> / t <sub>PLH</sub>	propagation delay LE to Y, $\bar{Y}$	77 28 22	270 54 46		340 68 58		405 81 69	ns	2.0 4.5 6.0	Fig. 8
t <sub>PZH</sub> / t <sub>PZL</sub>	3-state output enable time $\bar{O}E_n$ to Y, $\bar{Y}$	41 15 12	125 25 21		155 31 26		190 38 32	ns	2.0 4.5 6.0	Fig. 11
t <sub>PZH</sub> / t <sub>PZL</sub>	3-state output enable time OE <sub>3</sub> to Y, $\bar{Y}$	47 17 14	150 30 26		190 38 33		225 45 38	ns	2.0 4.5 6.0	Fig. 11
t <sub>PHZ</sub> / t <sub>PLZ</sub>	3-state output disable time $\bar{O}E_n$ to Y, $\bar{Y}$	50 18 14	155 31 26		195 39 33		235 47 40	ns	2.0 4.5 6.0	Fig. 11
t <sub>PHZ</sub> / t <sub>PLZ</sub>	3-state output disable time OE <sub>3</sub> to Y, $\bar{Y}$	58 21 17	155 31 26		195 39 33		235 47 40	ns	2.0 4.5 6.0	Fig. 11
t <sub>THL</sub> / t <sub>TLH</sub>	output transition time	14 5 4	60 12 10		75 15 13		90 18 15	ns	2.0 4.5 6.0	Figs 6, 7 and 8
t <sub>W</sub>	clock pulse width CP HIGH or LOW	80 16 14	17 6 5		100 20 17		120 24 20	ns	2.0 4.5 6.0	Fig. 6
t <sub>W</sub>	latch enable pulse width LE LOW	80 16 14	17 6 5		100 20 17		120 24 20	ns	2.0 4.5 6.0	Fig. 8
t <sub>su</sub>	set-up time D <sub>n</sub> to CP	50 10 9	11 4 3		65 13 11		75 15 13	ns	2.0 4.5 6.0	Fig. 10
t <sub>su</sub>	set-up time S <sub>n</sub> to LE	50 10 9	14 5 4		65 13 11		75 15 13	ns	2.0 4.5 6.0	Fig. 9
t <sub>h</sub>	hold time D <sub>n</sub> to CP	5 5 5	-6 -2 -2		5 5 5		5 5 5	ns	2.0 4.5 6.0	Fig. 10
t <sub>h</sub>	hold time S <sub>n</sub> to LE	5 5 5	-8 -3 -2		5 5 5		5 5 5	ns	2.0 4.5 6.0	Fig. 9

**74HC/HCT356****MSI****DC CHARACTERISTICS FOR 74HCT**

For the DC characteristics see chapter "HCMOS family characteristics", section "Family specifications".

Output capability: bus driver

I<sub>CC</sub> category: MSI

**Note to HCT types**

The value of additional quiescent supply current ( $\Delta I_{CC}$ ) for a unit load of 1 is given in the family specifications. To determine  $\Delta I_{CC}$  per input, multiply this value by the unit load coefficient shown in the table below.

INPUT	UNIT LOAD COEFFICIENT
D <sub>n</sub> , S <sub>n</sub>	0.2
OE <sub>3</sub>	0.25
LE	0.5
OE <sub>n</sub> , CP	1.0

**AC CHARACTERISTICS FOR 74HCT**

GND = 0 V; t<sub>r</sub> = t<sub>f</sub> = 6 ns; C<sub>L</sub> = 50 pF

SYMBOL	PARAMETER	T <sub>amb</sub> (°C)						UNIT	TEST CONDITIONS		
		74HCT							V <sub>CC</sub> V	WAVEFORMS	
		+25			-40 to +85		-40 to +125				
		min.	typ.	max.	min.	max.	min.				max.
t <sub>PHL</sub> / t <sub>PLH</sub>	propagation delay CP to Y, $\bar{Y}$	26	51		64		77	ns	4.5	Fig. 6	
t <sub>PHL</sub> / t <sub>PLH</sub>	propagation delay S <sub>n</sub> to Y, $\bar{Y}$	28	59		74		89	ns	4.5	Fig. 7	
t <sub>PHL</sub> / t <sub>PLH</sub>	propagation delay LE to Y, $\bar{Y}$	29	63		79		95	ns	4.5	Fig. 8	
t <sub>PZH</sub> / t <sub>PZL</sub>	3-state output enable time OE <sub>n</sub> to Y, $\bar{Y}$	17	34		43		51	ns	4.5	Fig. 11	
t <sub>PZH</sub> / t <sub>PZL</sub>	3-state output enable time OE <sub>3</sub> to Y, $\bar{Y}$	18	34		43		51	ns	4.5	Fig. 11	
t <sub>PHZ</sub> / t <sub>PLZ</sub>	3-state output disable time OE <sub>n</sub> to Y, $\bar{Y}$	17	33		41		50	ns	4.5	Fig. 11	
t <sub>PHZ</sub> / t <sub>PLZ</sub>	3-state output disable time OE <sub>3</sub> to Y, $\bar{Y}$	20	33		41		50	ns	4.5	Fig. 11	
t <sub>THL</sub> / t <sub>TLH</sub>	output transition time	5	12		15		18	ns	4.5	Figs 6, 7 and 8	
t <sub>W</sub>	clock pulse width CP HIGH or LOW	16	8		20		24	ns	4.5	Fig. 6	
t <sub>W</sub>	latch enable pulse width LE LOW	16	6		20		24	ns	4.5	Fig. 8	
t <sub>su</sub>	set-up time D <sub>n</sub> to CP	10	4		13		15	ns	4.5	Fig. 10	
t <sub>su</sub>	set-up time S <sub>n</sub> to LE	10	5		13		15	ns	4.5	Fig. 9	
t <sub>h</sub>	hold time D <sub>n</sub> to CP	5	0		5		5	ns	4.5	Fig. 10	
t <sub>h</sub>	hold time S <sub>n</sub> to LE	5	-2		5		5	ns	4.5	Fig. 9	

www.DataSheet4U.com

## AC WAVEFORMS

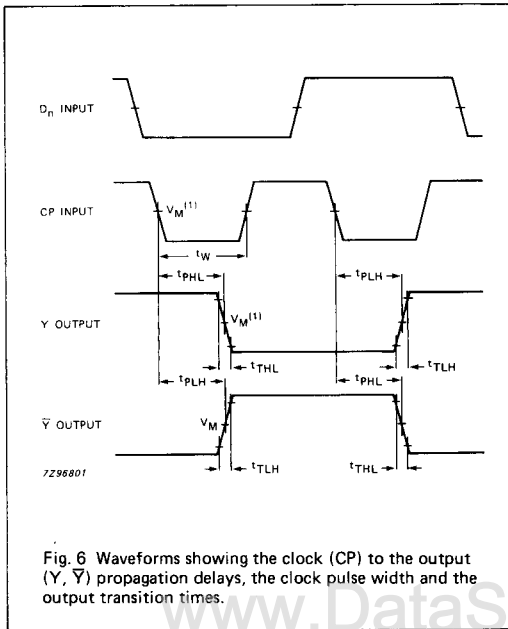


Fig. 6 Waveforms showing the clock (CP) to the output (Y,  $\bar{Y}$ ) propagation delays, the clock pulse width and the output transition times.

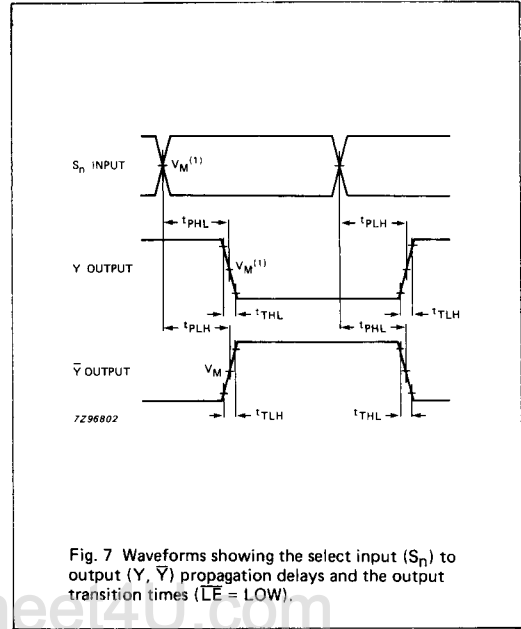


Fig. 7 Waveforms showing the select input ( $S_n$ ) to output (Y,  $\bar{Y}$ ) propagation delays and the output transition times (LE = LOW).

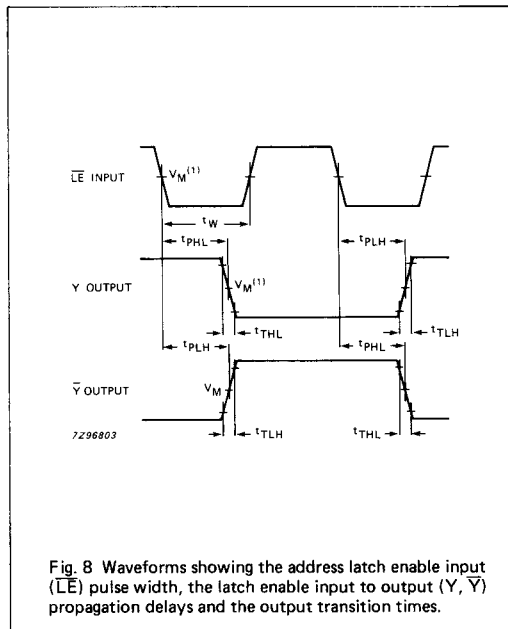


Fig. 8 Waveforms showing the address latch enable input ( $\overline{LE}$ ) pulse width, the latch enable input to output (Y,  $\bar{Y}$ ) propagation delays and the output transition times.

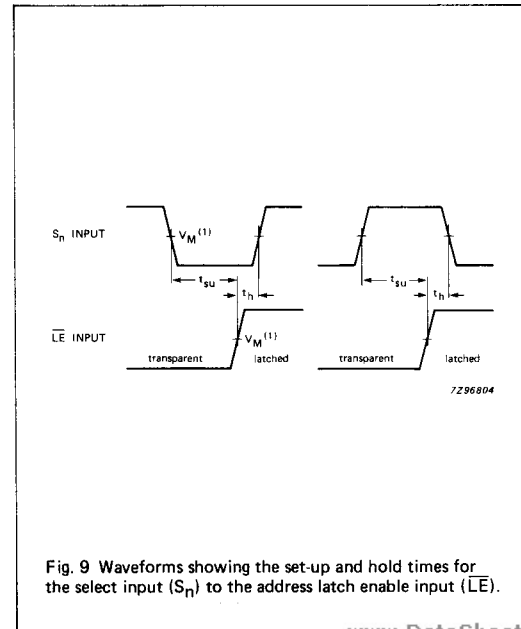


Fig. 9 Waveforms showing the set-up and hold times for the select input ( $S_n$ ) to the address latch enable input ( $\overline{LE}$ ).

74HC/HCT356

MSI

## AC WAVEFORMS

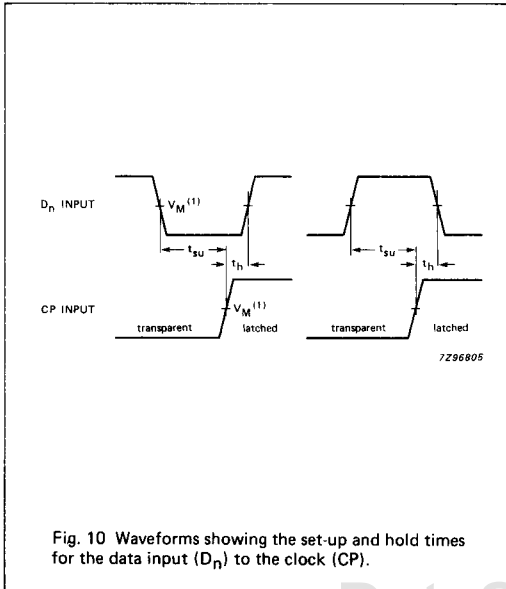


Fig. 10 Waveforms showing the set-up and hold times for the data input ( $D_n$ ) to the clock (CP).

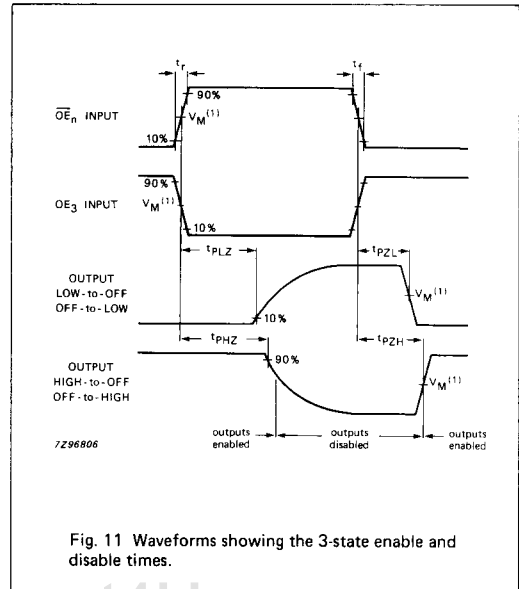


Fig. 11 Waveforms showing the 3-state enable and disable times.

## Note to AC waveforms

- (1) HC :  $V_M = 50\%$ ;  $V_I = \text{GND to } V_{CC}$ .  
 HCT:  $V_M = 1.3 \text{ V}$ ;  $V_I = \text{GND to } 3 \text{ V}$ .

www.DataSheet4U.com