

# Dual Solid State Relay

PCS28



**CALUS E93379**

## INPUT PARAMETERS (Ta = 25°C)

Control Voltage Range	1D	4 - 15 VDC
	2D	15 - 32 VDC
Must Turn-On Voltage	1D	4 VAC
	2D	15 VAC
Control Current	1D	8 - 50 mA
	2D	6 - 30 mA
Input Resistance	1D	330 Ω
	2D	1.5 kΩ
Must Turn-Off Voltage		1 VDC

## CHARACTERISTICS

Dielectric Strength	4000 VAC, 50 Hz/60 Hz, 1 min. (Input to Output)
	2500 VAC, 50 Hz/60 Hz, 1 min. (Input, Output to Output)
Insulation Resistance	1000 MΩ at 500 VDC
Operating Temperature	- 30°C to 80°C
Storage Temperature	- 30°C to 100°C
Weight	Approximately 83 g

## FEATURES

- Dual Solid State
- SCR Output
- Panel Mount
- Built in Snubber
- Opto-Isolation Between Input and Output
- RoHS Compliant

## OUTPUT PARAMETERS (Ta = 25°C)

	-24, 25	-38, 25	-24, 40	-38, 40	-24, 50	-38, 50
Load Voltage Range (VAC)	48-280	48-440	48-280	48-440	48-280	48-440
Max. Transient Voltage (Vpk)	600	800	600	800	600	800
Load Current Range	0.1 - 25 A		0.1 - 40 A		0.1 - 50 A	
Max. Surge Current (10 ms)	300		400		500	
Max. I <sup>2</sup> t (10 ms, A <sup>2</sup> s)	450		800		1250	
Max. On-State Voltage	1.5 VRMS					
Max. Off-State Leakage Current	10 mA					
Min. Off-State dv/dt	500 V/us					
Max. Turn-On Time	Zero –Cross: 1/2 Cycles + 1 ms; Random: 1 ms					
Max. Turn-Off Time	1/2 Cycles + 1 ms					
Frequency Range	47 - 63 Hz					
Min. Power Factor	0.5					

## PRECAUTIONS

1. Make sure that the polarity is correct when connecting, to avoid damage to the relay.
2. Apply heat-conducting silicon grease or a thermal transfer pad on the space between SSR and heat sink. Then, screw the heatsink firmly. In that case, it would keep the SSR from damaging by overheat.
3. Install an adequate heatsink or take other effective cooling measures, when the relay is working. Please refer to the curve of Max. Load Current vs Ambient Temperature.
4. Please do not use the relay beyond the descriptions in the data sheet.

## ORDERING INFORMATION

Example:	PCS28	-12D	-240A	-2	Z
Model:	PCS28				
Control Voltage:	12D: 9.6-14.4 VDC; 24D: 19.2- 28.8 VAC				
Load Voltage:	240A: 48 - 280 VAC; 380A: 48 - 440 VAC				
Load Current:	25: 25 A; 40: 40 A; 50: 50 A				
Switching Type:	Z: Zero Crossing; R: Random Turn-On				
Box Quantity:	80; Inner Box 2				

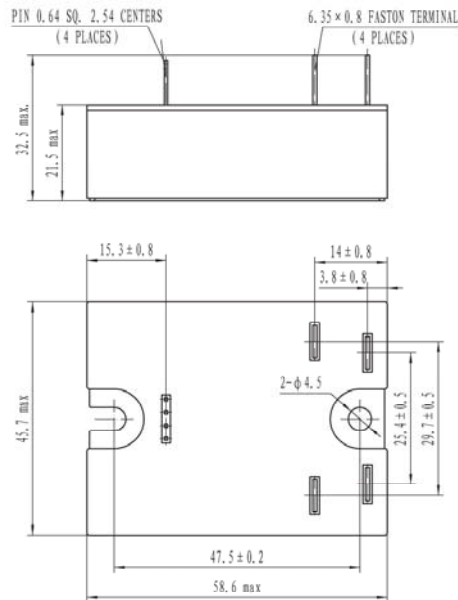
For Accessories and Heat Sinks see page 2

ACCESSORIES

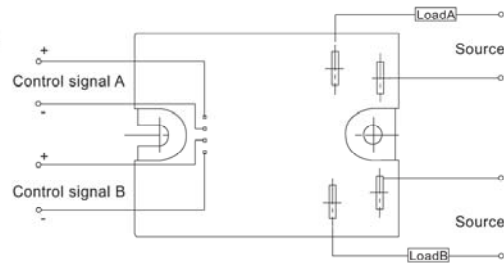
Heat Transfer Pad	- HTP SSR 33x57 or HTP SRR 46x62
Heat Sinks	-PCH-I-50 for the 30 VDC/50 Amp and 200 VDC/10 Amp Applications
	-PCH-H-110 for the 400 VDC/10 Amp, 150 VDC/50 Amp, 100 VDC/20 Amp, 50 VDC/40 Amp and 30 VDC/100 Amp Application
	-PCH-H-150 for the 50 VDC/80 Amp, 100 VDC/40 Amp, 200 VDC/40 Amp Application

DIMENSIONS (mm)

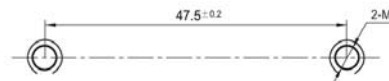
Outline Dimensions



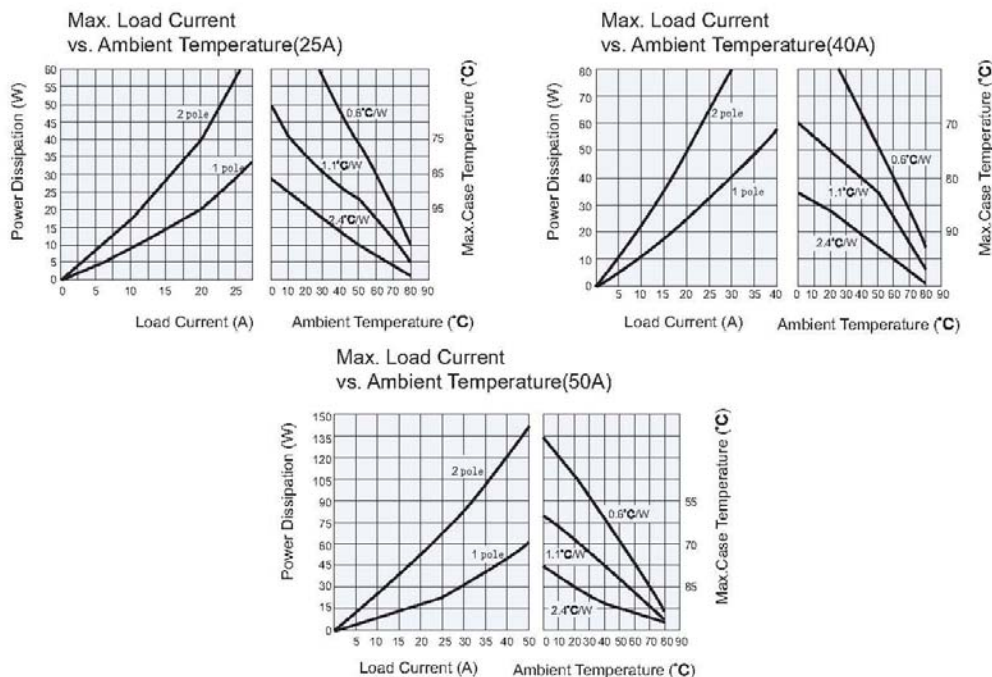
Wiring Diagram



Mounting Holes



CHARACTERISTIC CURVES



3220 Commander Drive, Suite 102 Carrollton, TX 75006

Sales: (972) 713-6272

(888) 997-3933

Fax: (972) 735-0964

www.PickerComponents.com

e-mail: sales@pickercomponents.com