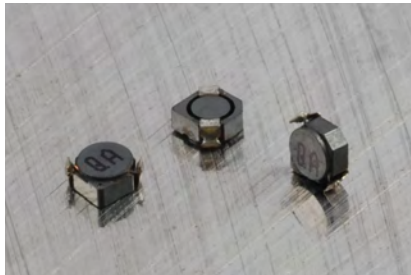
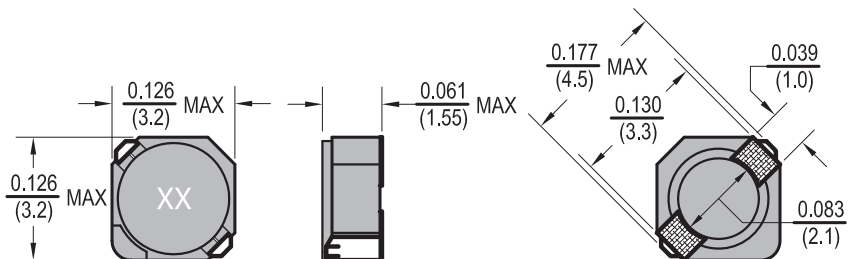




Power Chip Shielded Inductors PCS2D14



Dimensions: $\frac{\text{Inches}}{\text{(mm)}}$



Allied Part Number	Inductance (μh)	Tolerance (%)	Test Freq. KHz, 1v	DCR (Ω) Max	Rated Current (A)	I _{rms} (A) Typ.
PCS2D14-R47T-RC	.47	30	100	0.040	2.00	
PCS2D14-1R5T-RC	1.5	30	100	0.063	1.80	2.00
PCS2D14-1R8T-RC	1.8	30	100	0.075	1.65	1.80
PCS2D14-2R2T-RC	2.2	30	100	0.094	1.50	1.60
PCS2D14-2R7T-RC	2.7	30	100	0.106	1.35	1.40
PCS2D14-3R3T-RC	3.3	30	100	0.125	1.20	1.24
PCS2D14-3R9T-RC	3.9	30	100	0.138	1.10	1.12
PCS2D14-4R1T-RC	4.1	30	100	0.169	1.00	1.00
PCS2D14-4R7T-RC	4.7	30	100	0.169	1.00	1.00
PCS2D14-5R6T-RC	5.6	30	100	0.188	0.95	0.98
PCS2D14-6R8T-RC	6.8	30	100	0.213	0.85	0.92
PCS2D14-8R2T-RC	8.2	30	100	0.281	0.80	0.80
PCS2D14-100T-RC	10	30	100	0.294	0.70	0.76
PCS2D14-120T-RC	12	30	100	0.394	0.62	0.64

www.DataSheet4U.com

All specifications subject to change without notice.

Features

- Shielded SMD Power Inductor
- Low profile
- Low DC resistance
- Ideal for DC-DC converter applications

Electrical

Inductance Range: .47 μh to 12 μh

Tolerance: 30% over entire range

Also, available in tighter tolerances

Operating Temp: -35°C ~ +100°C

Rated Current: Current at which inductance drop is equal to 35% typ.

I_{rms}: current at which $\Delta T=40^\circ\text{C}$ temp rise

Resistance to Soldering Heat

Pre-Heat 150°C, 1 Min.

Solder Composition: Sn/Ag3.0/Cu0.5

Solder Temp: 260°C +/- 5°C for

10 sec. +/- 1 sec.

Test Equipment

(L): PM3260A / HP4284A / HP4285A

(RDC): Chen Hwa 502BC

Rated Current: HP4284A+HP42841A or Chen Hwa 1061 + Chen Hwa 301A

Physical

Packaging: 1000 pieces per 7 inch reel.

Marking: 2 Character Alpha Code