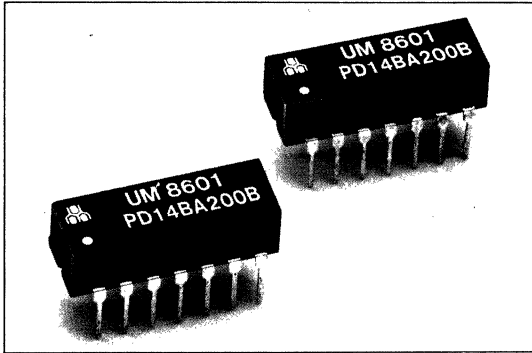




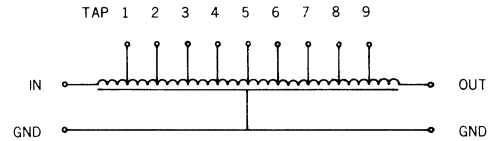
PD14 SERIES: 14-PIN DIP 10-TAP EQUALLY-SPACED



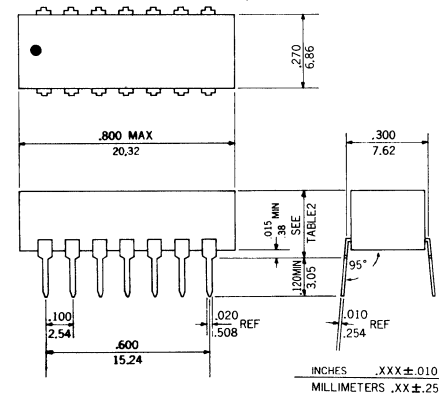
FEATURES:

- Standard 14-pin DIP Package
- 10 Equally-Spaced Delay Taps
- Compatible with TTL and DTL
- Custom Designs Available upon Request.

CIRCUIT CONFIGURATION AND PIN CONNECTIONS:



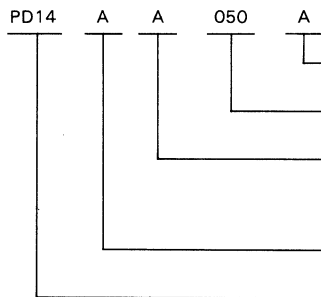
PACKAGE DIMENSIONS:



GENERAL SPECIFICATIONS:

Total Delay: 10 to 1000 ns.
 Tap Delay: 10% increments standard (other increments available upon request).
 Rise Time: 20% max. of total delay
 Characteristic Impedance: 50 to 500 ohms ($\pm 10\%$)
 Distortion: $\pm 10\%$ max.
 Temperature Coefficient of Delay: 100ppm/ $^{\circ}\text{C}$ max.
 Operating Temperature Range: 0°C to $+70^{\circ}\text{C}$
 Storage Temperature Range: -55°C to $+125^{\circ}\text{C}$
 Insulation Resistance: 1000 megohms min.
 50VDC, $+25^{\circ}\text{C}$
 Dielectric Strength: 50VDC

PART NUMBER SYSTEM:



Characteristic Impedance in ohm
 A=50 ohms B=100 ohms C=200 ohms D=300 ohms.
 Total Delay in ns.
 For examples: 050=50ns 125=125ns.
 Circuit Configuration and Pin Connections.
 See schematics Above, circuit A to F are standard(see Table 1), other pin connections are available upon request
 Mounting Height of Package (see Table 2)
 Basic Series Number
 Passive delay line, DIP 14 pins

TABLE 1 - PIN CONNECTIONS

Circuit	IN	Tap1	Tap2	Tap3	Tap4	Tap5	Tap6	Tap7	Tap8	Tap9	OUT	GND
A	2	3	4	5	6	7-8	9	10	11	12	13	1,14
B	14	2	12	3	11	4	5	10	6	9	7	1,8
C	1	13	2	12	3	11	5	10	6	9	7	8,14
D	6	5	4	3	2	1	13	12	11	10	9	7,8
E	1	2	3	4	5	6	12	11	10	9	8	7
F	1	13	2	12	3	11	4	10	5	9	6	7

TABLE 2-MOUNTING HEIGHT

Code	Dimension (max.)
A	.300 in(7.62mm)
B	.250 in(6.35mm)
C	.200 in(5.08mm)

ELECTRICAL SPECIFICATIONS:

PART NO.	TOTAL DELAY Td(ns) $\pm 5\%$	Td/TAP (ns)	RISE TIME Tr(ns) max.	ATTENUATION(%) PER IMPEDANCE		
				50	100	200
PD14XX010X	10 ± 1	1 ± 0.5	3.0	3	5	
PD14XX020X	20	2 ± 0.5	5.0	3	5	5
PD14XX030X	30	3 ± 1	7.0	3	5	5
PD14XX040X	40	4 ± 2.0	8.0	3	5	5
PD14XX050X	50	5 ± 2.0	10.0	3	5	5
PD14XX100X	100	10 ± 3	20.0	3	5	5
PD14XX150X	150	15 ± 3	30.0	3	5	6
PD14XX200X	200	20 ± 3	40.0	4	5	6
PD14XX250X	250	25 ± 3	50.0	4	5	6
PD14XX300X	300	30 ± 3	60.0		6	8
PD14XX400X	400	40 ± 4	80.0		7	8
PD14XX500X	500	50 ± 5	100.0		8	10
PD14XXA00X	1000	100 ± 10	200.0		10	20