

DIODE MODULE 150A/800V

PC1508 PD1508

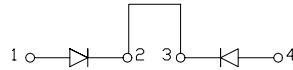
FEATURES

- * Isolated Base
- * Dual Diodes Cathode Common and Cascaded Circuit
- * High Surge Capability
- * UL Recognized, File No. E187184

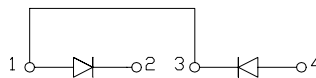
TYPICAL APPLICATIONS

- * Rectified For General Use

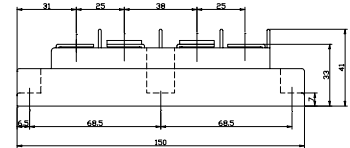
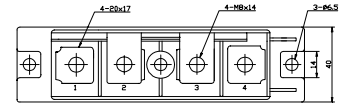
PC



PD



OUTLINE DRAWING



Maximum Ratings

Approx Net Weight:480g

Parameter	Symbol	Type / Grade	Unit
		PC1508 / PD1508	
Repetitive Peak Reverse Voltage *1	V _{RRM}	800	V
Non Repetitive Peak Reverse Voltage *1	V _{RSM}	900	

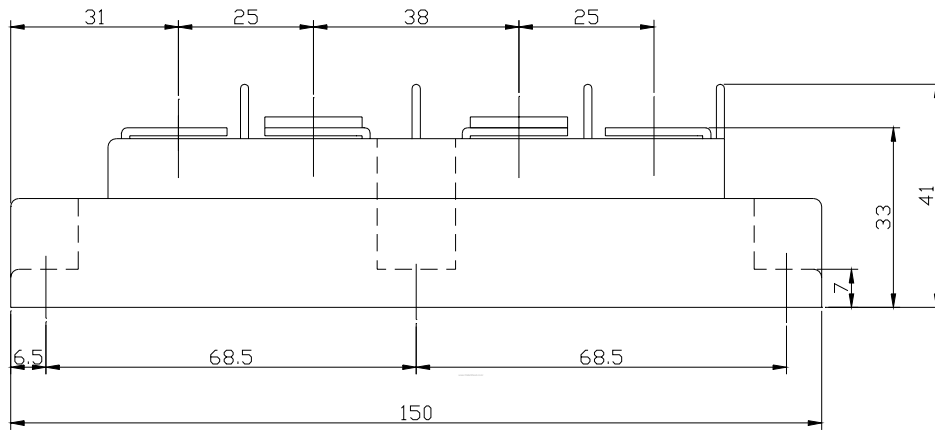
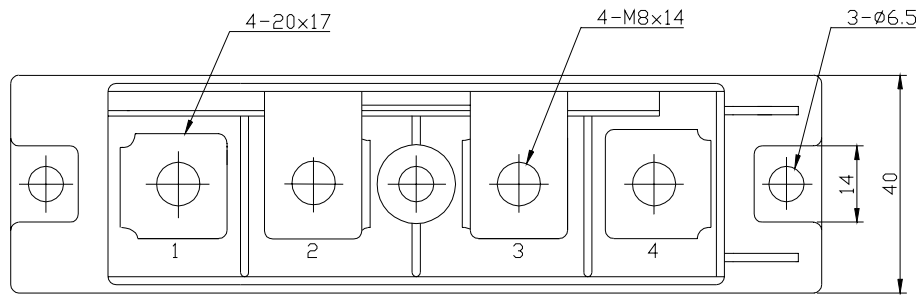
Parameter	Symbol	Conditions	Max Rated Value	Unit	
Average Rectified Output Current *1	I _{O(AV)}	50 Hz Half Sine Wave condition T _c =103°C	150	A	
RMS Forward Current *1	I _{F(RMS)}	—	235	A	
Surge Forward Current *1	I _{FSM}	50 Hz Half Sine Wave, 1cycle, Non-Repetitive	3200	A	
I Squared t *1	I ² t	2msec to 10msec	51200	A ² s	
Operating Junction Temperature Range	T _{jw}		-40 to +150	°C	
Storage Temperature Range	T _{stg}		-40 to +125	°C	
Isolation Voltage	Viso	Base Plate to Terminals, AC1min	2000	V	
Mounting Torque	Case Mounting	F _{tor}	M6 Screw	2.5 to 3.5	N.m
	Terminals		M8 Screw	9.0 to 10.0	

Electrical • Thermal Characteristics

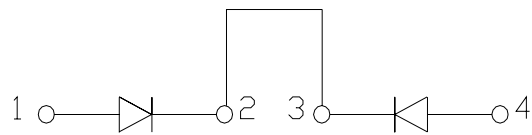
Characteristics	Symbol	Test Conditions	Max.	Unit
Peak Reverse Current *1	I _{RM}	V _{RM} = V _{RRM} , T _j = 150°C	15	mA
Peak Forward Voltage *1	V _{FM}	I _{FM} = 450A, T _j =25°C	1.28	V
Thermal Resistance *1	R _{th(j-c)}	Junction to Case	0.25	°C/W
	R _{th(c-f)}	Case to Fin, Greased	0.1	

*1: Value Per 1Arm

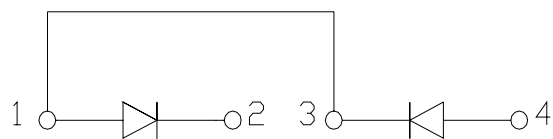
PC/PD1508 OUTLINE DRAWING (Dimensions in mm)



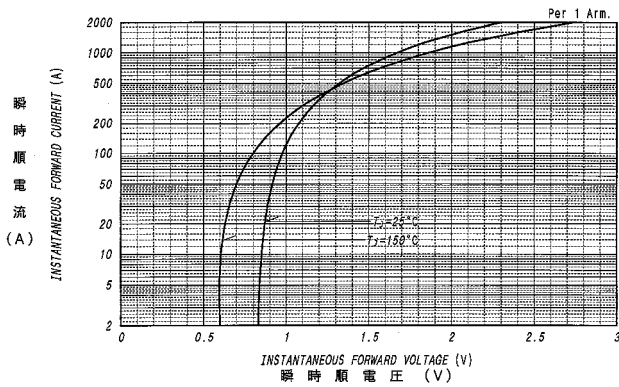
PC



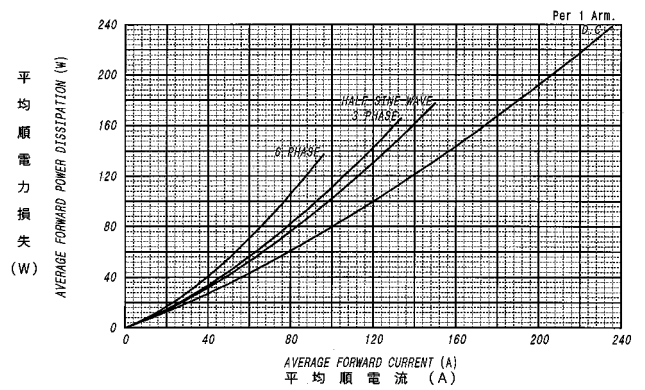
PD



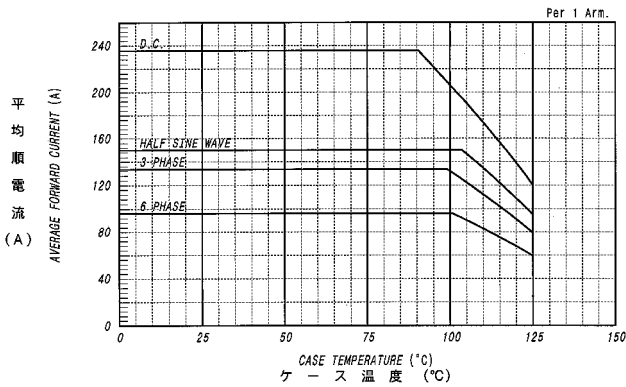
順電圧特性
FORWARD CURRENT VS. VOLTAGE



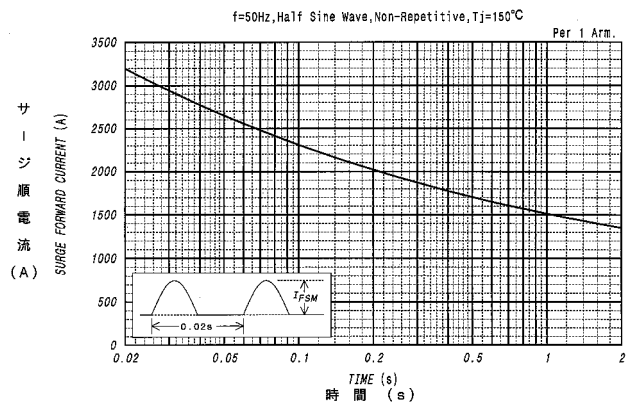
平均順電力損失特性
AVERAGE FORWARD POWER DISSIPATION



平均順電流 - ケース温度定格
AVERAGE FORWARD CURRENT VS. CASE TEMPERATURE



サージ順電流定格
SURGE CURRENT RATINGS



過渡熱抵抗特性
MAXIMUM TRANSIENT THERMAL IMPEDANCE
Junction to Case

