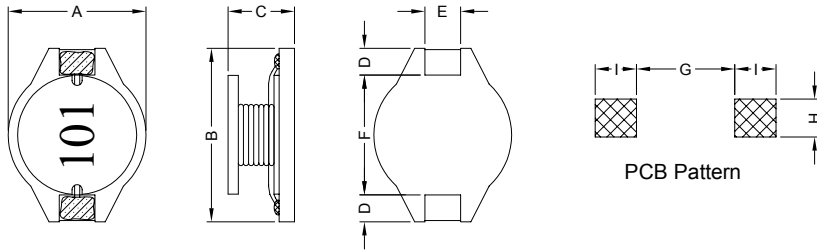


1. PART NO. EXPRESSION :

P D B 1 5 1 1 1 0 1 M Z F
 (a) (b) (c) (d)(e)(f)

- (a) Series code
- (b) Dimension code
- (c) Inductance code : 101 = 100uH
- (d) Tolerance code : M = ±20%
- (e) X, Y, Z : Standard part
- (f) F : Lead Free

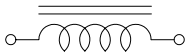
2. CONFIGURATION & DIMENSIONS :



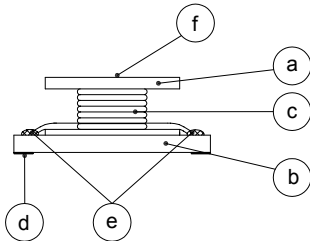
Unit:m/m

| A | B | C | D | E | F | G | H | I |
|----------|----------|-----------|---------|---------|----------|-----------|----------|----------|
| 15.0±0.3 | 18.4±0.3 | 11.5 Max. | 2.4±0.2 | 2.2±0.2 | 13.3±0.3 | 12.7 Ref. | 2.8 Ref. | 3.0 Ref. |

3. SCHEMATIC :



4. MATERIALS :



- (a) Core : DR Ferrite Core
- (b) Base : LCP
- (c) Wire : Enamelled Copper Wire
- (d) Terminal : Tinned Copper Plate
- (e) Adhesive : Epoxy
- (f) Ink : Bon Margue

5. GENERAL SPECIFICATION :

- a) Temp. rise : 40°C Typ. at Irms
- b) ΔL/L0A = 10% Typ. at Isat
- c) Storage temp. : -40°C to +125°C
- d) Operating temp. : -40°C to +80°C
- e) Resistance to solder heat : 260°C.10 secs



RoHS Compliant

NOTE : Specifications subject to change without notice. Please check our website for latest information.

01.05.2008



SUPERWORLD ELECTRONICS (S) PTE LTD

6. ELECTRICAL CHARACTERISTICS :

| Part No. | Inductance (μ H) | Test Frequency (Hz) | RDC ($m\Omega$) Max. | Isat (A) | Irms (A) |
|---------------|--------------------------|---------------------------|------------------------------|-------------|-------------|
| PDB1511470MZF | 47.00 \pm 20% | 1V/100K | 55.0 | 5.20 | 3.70 |
| PDB1511680MZF | 68.00 \pm 20% | 1V/100K | 75.0 | 4.30 | 3.10 |
| PDB1511101MZF | 100.00 \pm 20% | 1V/100K | 125.0 | 3.60 | 2.50 |
| PDB1511151MZF | 150.00 \pm 20% | 1V/100K | 190.0 | 3.00 | 2.00 |
| PDB1511221MZF | 220.00 \pm 20% | 1V/100K | 280.0 | 2.50 | 1.60 |
| PDB1511331MZF | 330.00 \pm 20% | 1V/100K | 370.0 | 2.00 | 1.40 |
| PDB1511471MZF | 470.00 \pm 20% | 1V/100K | 510.0 | 1.60 | 1.20 |
| PDB1511681MZF | 680.00 \pm 20% | 1V/100K | 800.0 | 1.40 | 1.00 |
| PDB1511102MZF | 1000.00 \pm 20% | 1V/100K | 1100.0 | 1.15 | 0.80 |
| PDB1511152MZF | 1500.00 \pm 20% | 1V/100K | 1600.0 | 0.95 | 0.60 |
| PDB1511222MZF | 2200.00 \pm 20% | 1V/100K | 2300.0 | 0.80 | 0.50 |
| PDB1511332MZF | 3300.00 \pm 20% | 1V/100K | 3600.0 | 0.65 | 0.40 |
| PDB1511472MZF | 4700.00 \pm 20% | 1V/100K | 5200.0 | 0.55 | 0.35 |
| PDB1511682MZF | 6800.00 \pm 20% | 1V/100K | 7700.0 | 0.45 | 0.30 |
| PDB1511103MZF | 10000.00 \pm 20% | 1V/100K | 11000.0 | 0.38 | 0.25 |



RoHS Compliant

NOTE : Specifications subject to change without notice. Please check our website for latest information.

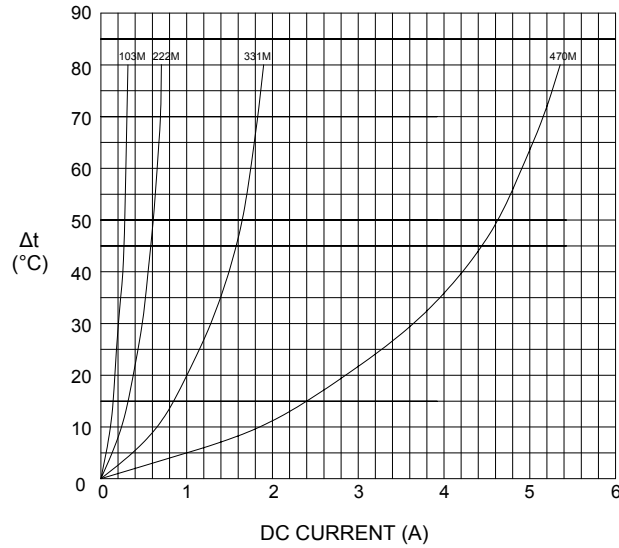
01.05.2008



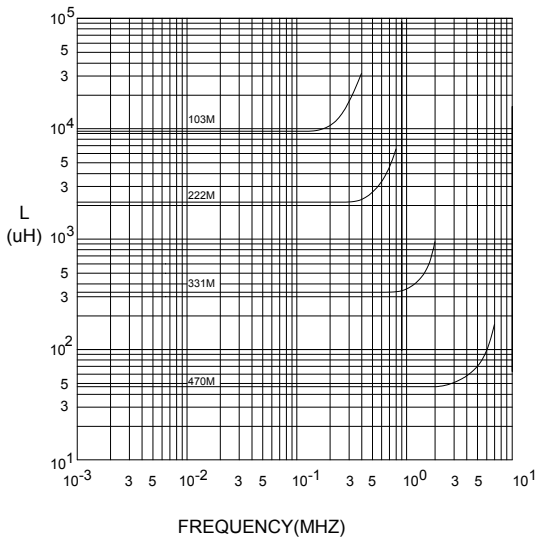
SUPERWORLD ELECTRONICS (S) PTE LTD

7. CHARACTERISTICS CURVES :

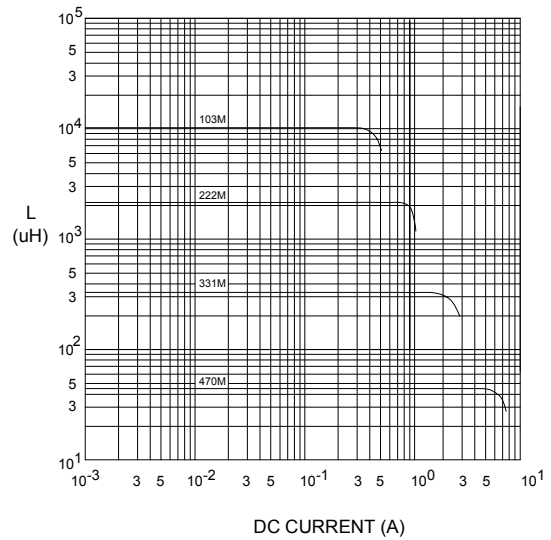
@ TEMP. RISE VS. DC SUPERPOSITION RESPONSE CURVE



@ INDUCTANCE VS. FREQUENCY RESPONSE CURVE



@ INDUCTANCE VS. DC SUPERPOSITION RESPONSE CURVE



RoHS Compliant

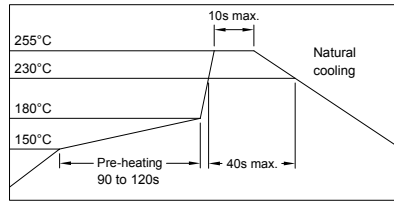
NOTE : Specifications subject to change without notice. Please check our website for latest information.

01.05.2008



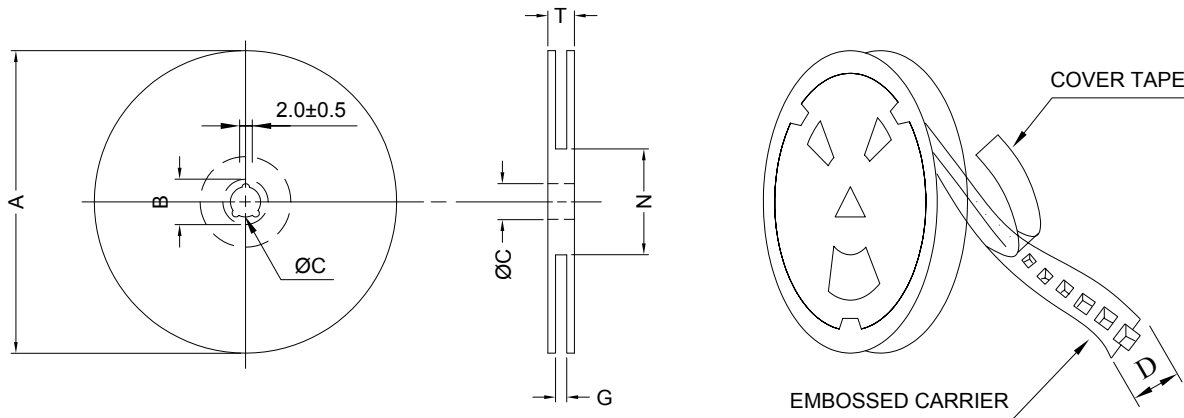
SUPERWORLD ELECTRONICS (S) PTE LTD

RECOMMENDED SOLDERING CONDITIONS REFLOW SOLDERINGS

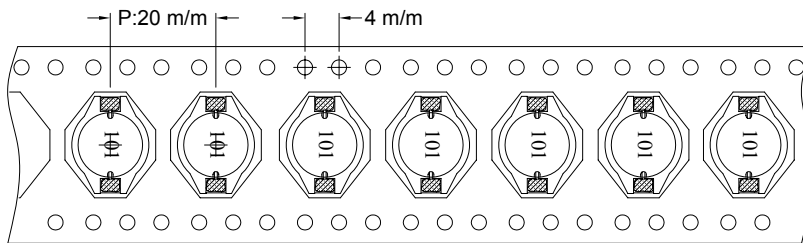


8. PACKAGING INFORMATION :

(1) CONFIGURATION



* CARRIER TAPE WIDTH : D



(2) DIMENSIONS

Unit:m/m

| STYLE | A | B | C | D | G | N | T |
|-------|-----|--------|--------|----|------------------|-------------------|------|
| 13-32 | 330 | 21±0.8 | 13±0.5 | 32 | 34 ⁺⁰ | 100 ⁻⁰ | 38.4 |

(3) Q'TY & G.W. PER PACKAGE

| SERIES | INNER : REEL | | | OUTER : CARTON | | |
|---------|--------------|-----------|-------|----------------|-----------|--------------|
| | Q'TY (PCS) | G.W. (gw) | STYLE | Q'TY (PCS) | G.W. (Kg) | SIZE (cm) |
| PDB1511 | 200 | 1370 | 13-32 | 800 | 9.0 | 40 x 20 x 26 |



RoHS Compliant

NOTE : Specifications subject to change without notice. Please check our website for latest information.

01.05.2008



SUPERWORLD ELECTRONICS (S) PTE LTD

9. RELIABILITY AND TEST CONDITION :

| TEST ITEM | SPECIFICATION | TEST CONDITION |
|---|---|---|
| SOLDERABILITY | MORE THAN 90% OF THE TERMINAL ELECTRODE SHALL BE COVERED WITH FRESH SOLDER. | PREHEAT : 125±25°C FOR 60 SECONDS SOLDER : 99%Sn/0.3%Ag/0.7%Cu OR EQUIVALENT SOLDER TEMP. : 245±5°C FLUX : ROSIN DIP TIME : 4±1 SECONDS |
| THERMAL SHOCK TEST (TEMP. CYCLE) | INDUCTANCE SHALL NOT CHANGE MORE THAN ±20% | ROOM TEMP. → -25±2°C 15 MINUTES → 30 MINUTES ROOM TEMP. → 85±2°C 15 MINUTES → 30 MINUTES TOTAL : 50 CYCLES |
| HUMIDITY RESISTANCE TEST | | TEMPERATURE : 40±2°C HUMIDITY : 90 ~ 95% APPLIED CURRENT : PER SPEC. TIME : 500 HOURS |
| HIGH TEMP. RESISTANCE TEST | | TEMPERATURE : 85±2°C APPLIED CURRENT : PER SPEC. TIME : 500 HOURS |



RoHS Compliant

NOTE : Specifications subject to change without notice. Please check our website for latest information.

01.05.2008



SUPERWORLD ELECTRONICS (S) PTE LTD

10. UL CARD :

OBMW2 **November 30, 2000**
Magnet Wire - Component

PACIFIC ELECTRIC WIRE & CABLE (SHENZHEN) CO LTD **E201757**
607 BAOLONG INDUSTRIAL ESTATE LONGGANG, SHENZHEN
GUANGDONG CHINA

| Mtl Dsg | Coating Type | TC | ANSI Type | TI |
|----------|-------------------------|----------------|-----------|-------|
| UEW/U | BC | — | — | 130 |
| PEW/U | Polyurethane | — | — | 155°C |
| PEWH/U | Polyester | — | MW5-C | 180 |
| PEW-NY/U | Modified Polyester | — | MW30-C | 155 |
| HAI/U | Polyester | Polyamide | MW24-C | 200 |
| UEW-NY/U | Polyester(Amide)(Imide) | Polyamideimide | MW35,73 | 155 |
| | Polyurethane | Polyamide | MW80-C | 130 |
| | | | MW28-C | 130 |

Marking: Company name and material designation or marked designation on package or reel, and Recognized Component Mark.

See General Information Preceding These Recognitions

1/3/2001 **Underwriters Laboratories Inc.** **Card 1 of 2**

SUMITOMO CHEMICAL CO LTD **E54705 (M)**
5-33 KITAHAMA 4-CHOME CHUO-KO, OSAKA JAPAN

| Mtl Dsg | Col | Min Thk mm | UL94 Flame Class | Elec | RTI Mech with Imp | w/o Imp | H W I | H A I | H V R | D 4 9 5 | C T I |
|---|------------|------------|------------------|------|-------------------|---------|-------|-------|-------|---------|-------|
| Liquid crystal polyester (LCP), designated "EKONOL" or "SUMIKASUPER", furnished in the form of pellets, (Contd) | | | | | | | | | | | |
| E4008, E400X | NC, BK | 0.30 | 94V-0 | 130 | 130 | 130 | — | — | — | — | — |
| | | 0.75 | 94V-0 | 130 | 130 | 130 | 3 | 4 | — | — | — |
| | | 1.5 | 94V-0 | 130 | 130 | 130 | 2 | 4 | — | — | — |
| | | 3.0 | 94V-0 | 130 | 130 | 130 | 1 | 4 | 0 | 5 | 4 |
| E4008 | NC, WT, BK | 0.30 | 94V-0 | 130 | 130 | 130 | — | — | — | — | — |
| | | 0.75 | 94V-0 | 220 | 180 | 220 | 3 | 4 | — | — | — |
| | | 1.5 | 94V-0 | 220 | 200 | 240 | 2 | 4 | — | — | — |
| | | 3.0 | 94V-0 | 220 | 200 | 240 | 1 | 4 | 0 | 5 | 4 |
| E4010 | NC, BK | 0.30 | 94V-0 | 130 | 130 | 130 | — | — | — | — | — |
| | | 0.75 | 94V-0 | 220 | 180 | 220 | 3 | 4 | — | — | — |
| | | 1.5 | 94V-0 | 220 | 200 | 240 | 2 | 4 | — | — | — |
| | | 3.0 | 94V-0 | 220 | 200 | 240 | 1 | 4 | 0 | 5 | 4 |
| E400(Y)L, E4008L | NC, BK | 0.30 | 94V-0 | 130 | 130 | 130 | — | — | — | — | — |
| | | 0.75 | 94V-0 | 130 | 130 | 130 | 3 | 4 | — | — | — |
| | | 1.5 | 94V-0 | 130 | 130 | 130 | 2 | 4 | — | — | — |
| | | 3.0 | 94V-0 | 130 | 130 | 130 | 1 | 4 | 0 | 5 | 4 |
| E4810 | NC, BK | 0.30 | 94V-0 | 130 | 130 | 130 | — | — | — | — | — |
| | | 0.75 | 94V-0 | 130 | 130 | 130 | 0 | 4 | — | — | — |
| | | 1.5 | 94V-0 | 130 | 130 | 130 | 0 | 4 | — | — | — |
| | | 3.0 | 94V-0 | 130 | 130 | 130 | 1 | 4 | 0 | 5 | 4 |

(X) Denotes any number 1 thru 9.
(Y) Denotes any number 1 thru 7.



RoHS Compliant

NOTE : Specifications subject to change without notice. Please check our website for latest information.

01.05.2008



SUPERWORLD ELECTRONICS (S) PTE LTD