

1. PART NO. EXPRESSION :

PDC04031R0MZ F

www.datasheet4u.com (a)

(b)

(c) (d)(e)(f)

(a) Series code

(b) Dimension code

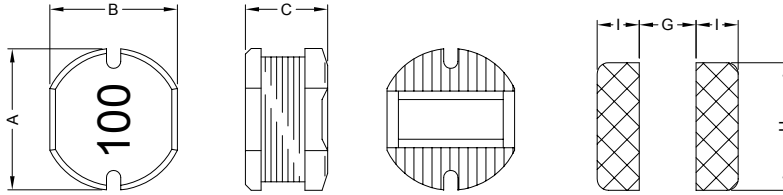
(c) Inductance code : 1R0 = 1.0uH

(d) Tolerance code : K = ±10%, M = ±20%

(e) X, Y, Z : Standard products

(f) F : Lead Free

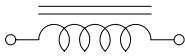
2. CONFIGURATION & DIMENSIONS :



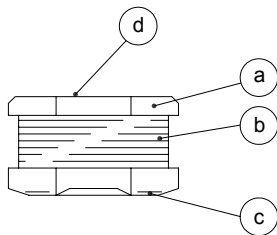
PCB Pattern

A	B	C	G	H	I
4.5±0.3	4.0±0.3	3.2±0.3	1.50 Ref.	4.50 Ref.	1.75 Ref.

3. SCHEMATIC :



4. MATERIALS :



(a) Core : DR Ferrite Core

(b) Wire : Enamelled Copper Wire

(c) Terminal : Ag+Cu+Ni+Sn

(d) Ink : Bon Margue

5. GENERAL SPECIFICATION :

- a) Temp. rise : 40°C Max.
- b) Rated current : Base on temp. rise & $\Delta L/L0A = 10\%$ Max.
- c) Storage temp. : -40°C to +125°C
- d) Operating temp. : -40°C to +85°C
- e) Resistance to solder heat : 260°C.10 secs



RoHS Compliant

NOTE : Specifications subject to change without notice. Please check our website for latest information.

01.05.2008



SUPERWORLD ELECTRONICS (S) PTE LTD

PG. 1

6. ELECTRICAL CHARACTERISTICS :

Part No.	Inductance (μ H)	Test Frequency (MHz)	RDC (Ω) Max.	IDC (A) Max.
PDC04031R0MZF	1.0 \pm 20%	7.96	0.033	3.80
PDC04031R4MZF	1.4 \pm 20%	7.96	0.038	3.30
PDC04031R8MZF	1.8 \pm 20%	7.96	0.042	2.91
PDC04032R2MZF	2.2 \pm 20%	7.96	0.047	2.60
PDC04032R7MZF	2.7 \pm 20%	7.96	0.052	2.43
PDC04033R3MZF	3.3 \pm 20%	7.96	0.058	2.15
PDC04033R9MZF	3.9 \pm 20%	7.96	0.076	1.98
PDC04034R7MZF	4.7 \pm 20%	7.96	0.094	1.70
PDC04035R6MZF	5.6 \pm 20%	7.96	0.101	1.60
PDC04036R8MZF	6.8 \pm 20%	7.96	0.117	1.41
PDC04038R2MZF	8.2 \pm 20%	7.96	0.132	1.26
PDC0403100MZF	10.0 \pm 20%	2.52	0.182	1.15
PDC0403120MZF	12.0 \pm 20%	2.52	0.210	1.05
PDC0403150MZF	15.0 \pm 20%	2.52	0.235	0.92
PDC0403180MZF	18.0 \pm 20%	2.52	0.338	0.84
PDC0403220MZF	22.0 \pm 20%	2.52	0.378	0.76
PDC0403270MZF	27.0 \pm 20%	2.52	0.522	0.71
PDC0403330KZF	33.0 \pm 10%	2.52	0.540	0.64
PDC0403390KZF	39.0 \pm 10%	2.52	0.587	0.59
PDC0403470KZF	47.0 \pm 10%	2.52	0.844	0.54
PDC0403560KZF	56.0 \pm 10%	2.52	0.937	0.50
PDC0403680KZF	68.0 \pm 10%	2.52	1.117	0.46



RoHS Compliant

NOTE : Specifications subject to change without notice. Please check our website for latest information.

01.05.2008



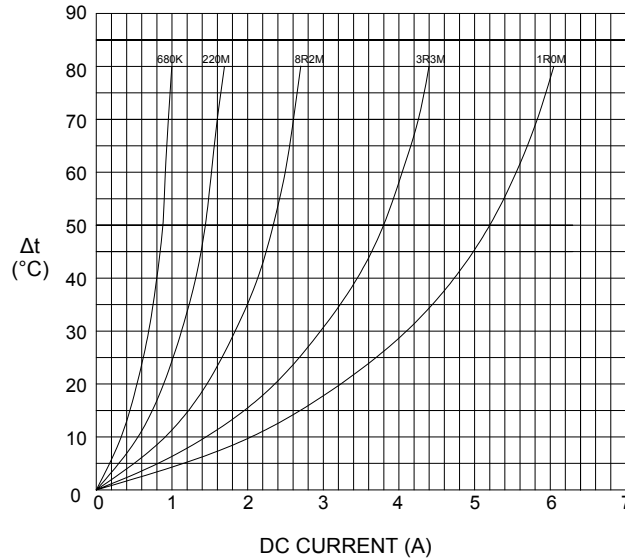
SUPERWORLD ELECTRONICS (S) PTE LTD

PG. 2

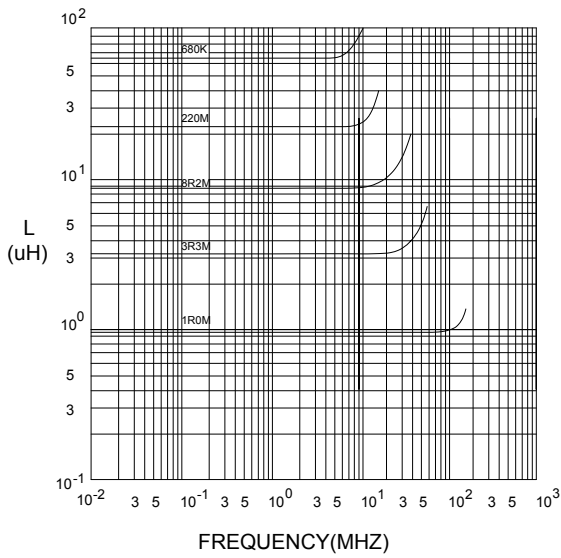
7. CHARACTERISTICS CURVES :

www.datasheet4u.com

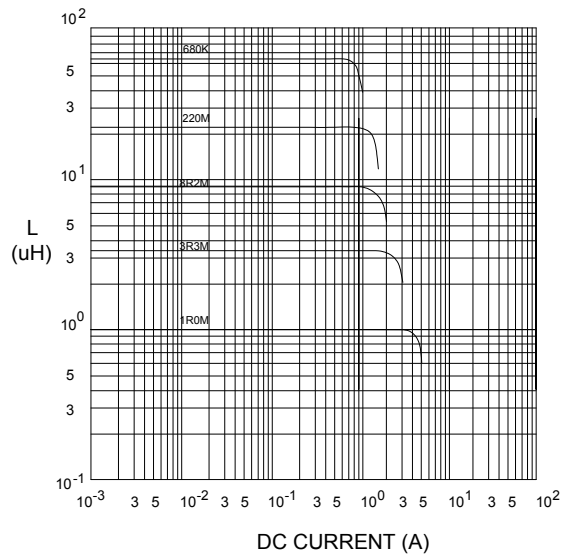
@ TEMP. RISE VS. DC SUPERPOSITION RESPONSE CURVE



@ INDUCTANCE VS. FREQUENCY RESPONSE CURVE



@ INDUCTANCE VS. DC SUPERPOSITION RESPONSE CURVE



NOTE : Specifications subject to change without notice. Please check our website for latest information.



RoHS Compliant

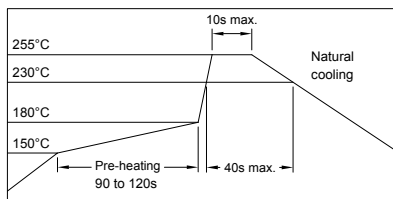
01.05.2008



SUPERWORLD ELECTRONICS (S) PTE LTD

PG. 3

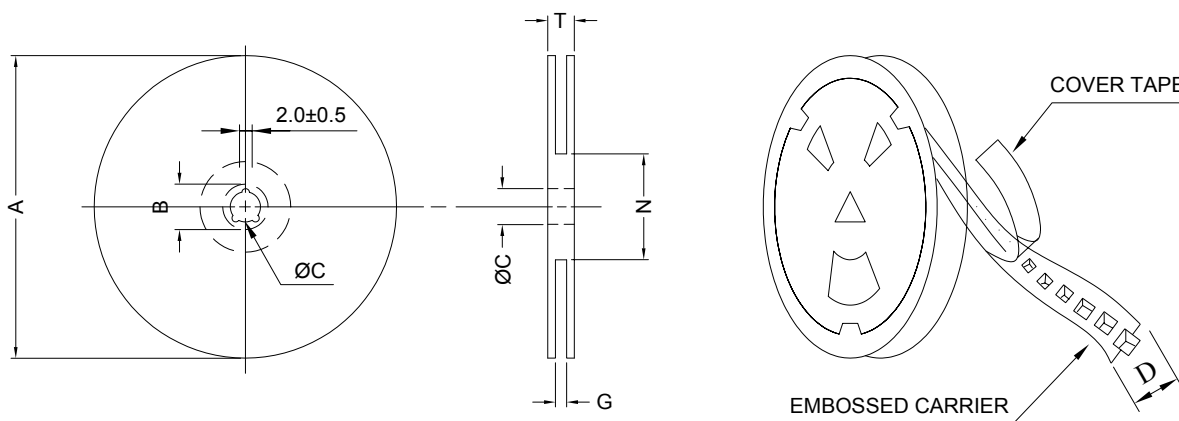
RECOMMENDED SOLDERING CONDITIONS REFLOW SOLDERINGS



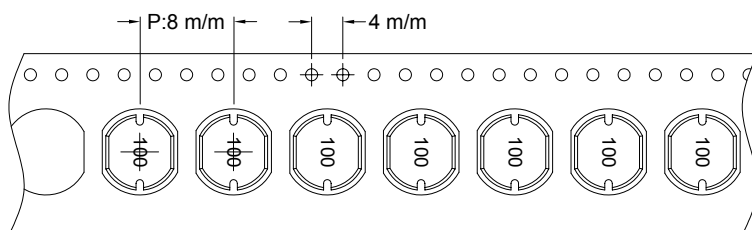
www.datasheet4u.com

8. PACKAGING INFORMATION :

(1) CONFIGURATION



* CARRIER TAPE WIDTH : D



(2) DIMENSIONS

Unit:m/m

STYLE	A	B	C	D	G	N	T
13 - 12	330	21±0.8	13±0.5	12	14 ⁺⁰	50 ⁻⁰	18.4

(3) Q'TY & G.W. PER PACKAGE

SERIES	INNER : REEL			OUTER : CARTON		
	Q'TY (PCS)	G.W. (gw)	STYLE	Q'TY (PCS)	G.W. (Kg)	SIZE (cm)
PDC0403	1500	825	13 - 12	12000	10.1	40 x 40 x 24
PDC0403	2000	1100	13 - 12	16000	12.3	40 x 40 x 24



RoHS Compliant

NOTE : Specifications subject to change without notice. Please check our website for latest information.

01.05.2008

