

General Description

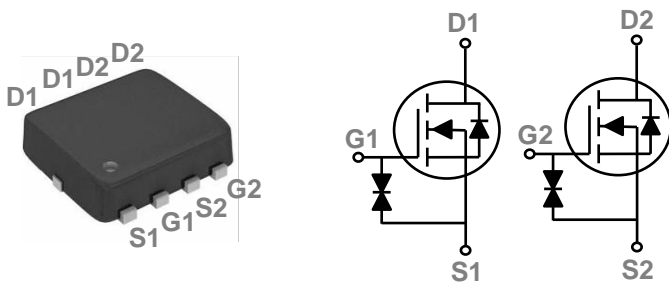
These N-Channel enhancement mode power field effect transistors are using trench DMOS technology. This advanced technology has been especially tailored to minimize on-state resistance, provide superior switching performance, and withstand high energy pulse in the avalanche and commutation mode. These devices are well suited for high efficiency fast switching applications.

BVDSS	RDSON	ID
20V	12mΩ	30A

Features

- 20V,30A, RDS(ON) =12mΩ @VGS = 10V
- Improved dv/dt capability
- ESD Protection Diode Embedded
- 100% EAS Guaranteed
- Green Device Available

PPAK3x3 Dual Pin Configuration



Applications

- MB / VGA / Vcore
- POL Applications
- SMPS 2nd SR
- Li-Battery Protection

Absolute Maximum Ratings Tc=25°C unless otherwise noted

Symbol	Parameter	Rating	Units
V _{DS}	Drain-Source Voltage	20	V
V _{GS}	Gate-Source Voltage	±10	V
I _D	Drain Current – Continuous (T _C =25°C)	30	A
	Drain Current – Continuous (T _C =100°C)	19	A
I _{DM}	Drain Current – Pulsed ¹	120	A
P _D	Power Dissipation (T _C =25°C)	26	W
	Power Dissipation – Derate above 25°C	0.21	W/°C
T _{STG}	Storage Temperature Range	-55 to 150	°C
T _J	Operating Junction Temperature Range	-55 to 150	°C

Thermal Characteristics

Symbol	Parameter	Typ.	Max.	Unit
R _{θJA}	Thermal Resistance Junction to ambient	---	62	°C/W
R _{θJC}	Thermal Resistance Junction to Case	---	4.8	°C/W

Electrical Characteristics (T_J=25 °C, unless otherwise noted)
Off Characteristics

Symbol	Parameter	Conditions	Min.	Typ.	Max.	Unit
BV _{DSS}	Drain-Source Breakdown Voltage	V _{GS} =0V, I _D =250uA	20	---	---	V
ΔBV _{DSS} /ΔT _J	BV _{DSS} Temperature Coefficient	Reference to 25°C, I _D =1mA	---	0.02	---	V/°C
I _{DSS}	Drain-Source Leakage Current	V _{DS} =20V, V _{GS} =0V, T _J =25°C	---	---	1	uA
		V _{DS} =16V, V _{GS} =0V, T _J =125°C	---	---	10	uA
I _{GSS}	Gate-Source Leakage Current	V _{GS} =±10V, V _{DS} =0V	---	---	±100	nA

On Characteristics

R _{DS(ON)}	Static Drain-Source On-Resistance	V _{GS} =4.5V, I _D =10A	8	10	12	mΩ
		V _{GS} =4.2V, I _D =10A	8	10.1	12.2	mΩ
		V _{GS} =3.7V, I _D =9A	8	10.3	12.5	mΩ
		V _{GS} =3.0V, I _D =9A	8.5	10.7	13.2	mΩ
		V _{GS} =2.5V, I _D =8A	9	11.4	14.5	mΩ
		V _{GS} =1.8V, I _D =8A	10	15	20	mΩ
V _{GS(th)}	Gate Threshold Voltage	V _{GS} =V _{DS} , I _D =250uA	0.3	0.6	1	V
ΔV _{GS(th)}	V _{GS(th)} Temperature Coefficient		---	2	---	mV/°C
g _{fs}	Forward Transconductance	V _{DS} =10V, I _S =5A	---	12	---	S

Dynamic and switching Characteristics

Q _g	Total Gate Charge ^{2, 3}	V _{DS} =10V, V _{GS} =4.5V, I _D =5A	---	16.9	26	nC
Q _{gs}	Gate-Source Charge ^{2, 3}		---	1.1	3	
Q _{gd}	Gate-Drain Charge ^{2, 3}		---	4	7	
T _{d(on)}	Turn-On Delay Time ^{2, 3}	V _{DD} =10V, V _{GS} =4.5V, R _G =25Ω I _D =1A	---	6.8	13	ns
T _r	Rise Time ^{2, 3}		---	20	38	
T _{d(off)}	Turn-Off Delay Time ^{2, 3}		---	41.8	79	
T _f	Fall Time ^{2, 3}		---	13.2	25	
C _{iss}	Input Capacitance	V _{DS} =10V, V _{GS} =0V, F=1MHz	---	1020	1480	pF
C _{oss}	Output Capacitance		---	160	240	
C _{rss}	Reverse Transfer Capacitance		---	110	160	
R _g	Gate resistance	V _{GS} =0V, V _{DS} =0V, F=1MHz	---	2	4	Ω

Drain-Source Diode Characteristics and Maximum Ratings

Symbol	Parameter	Conditions	Min.	Typ.	Max.	Unit
I _S	Continuous Source Current	V _G =V _D =0V, Force Current	---	---	30	A
I _{SM}	Pulsed Source Current		---	---	60	A
V _{SD}	Diode Forward Voltage	V _{GS} =0V, I _S =1A, T _J =25°C	---	---	1	V

Note :

1. Repetitive Rating : Pulsed width limited by maximum junction temperature.
2. The data tested by pulsed, pulse width ≤ 300us, duty cycle ≤ 2%.
3. Essentially independent of operating temperature.

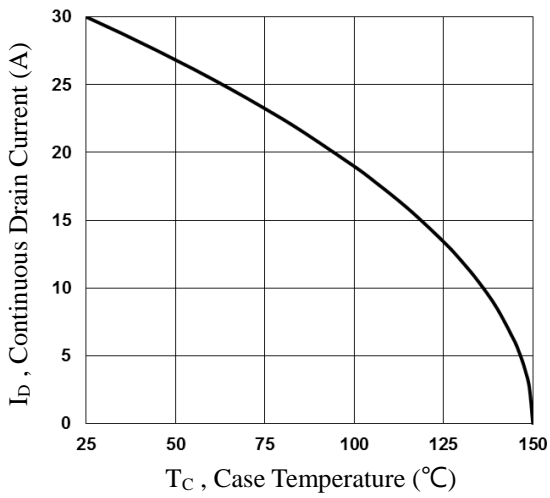


Fig.1 Continuous Drain Current vs. T_c

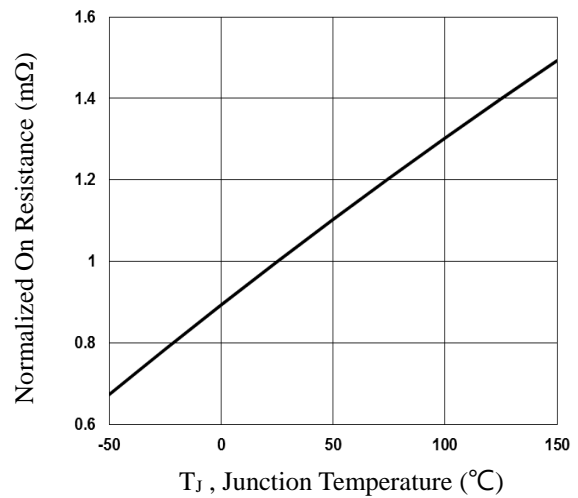


Fig.2 Normalized RDSon vs. T_J

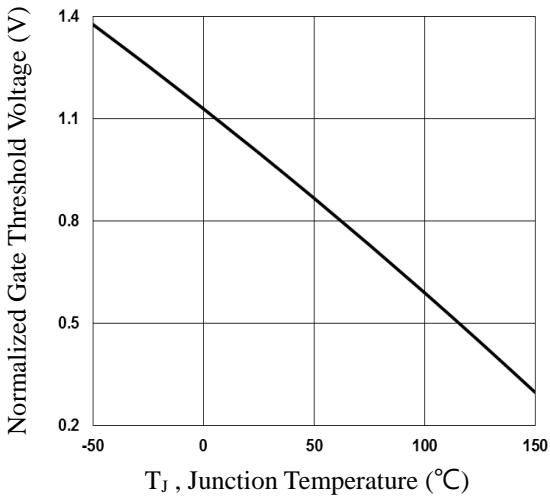


Fig.3 Normalized V_{th} vs. T_J

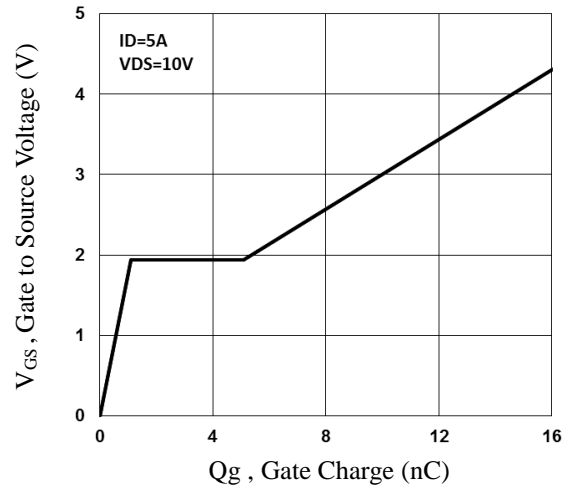


Fig.4 Gate Charge Waveform

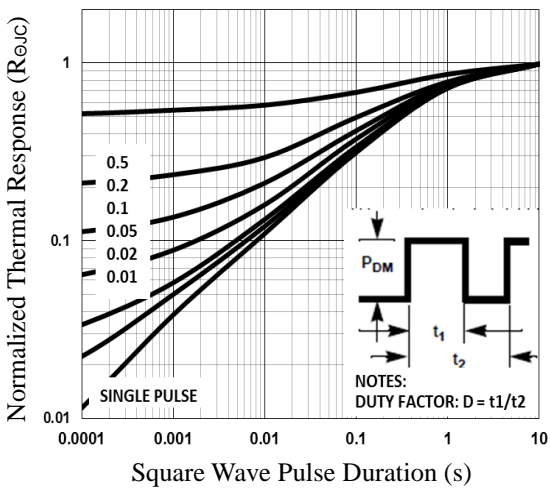


Fig.5 Normalized Transient Response

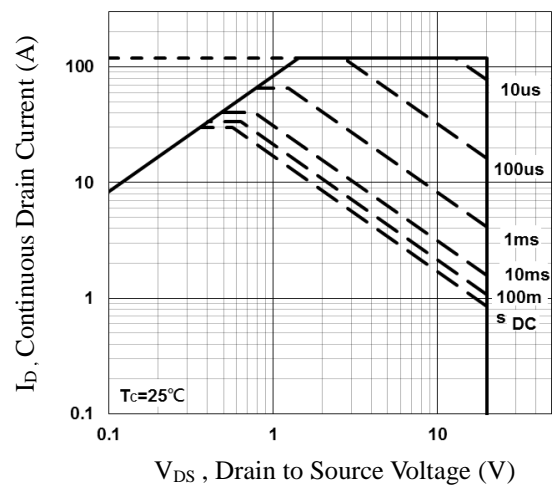


Fig.6 Maximum Safe Operation Area

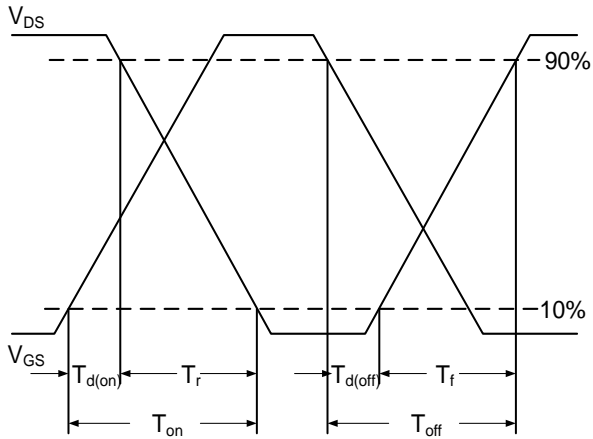


Fig.7 Switching Time Waveform

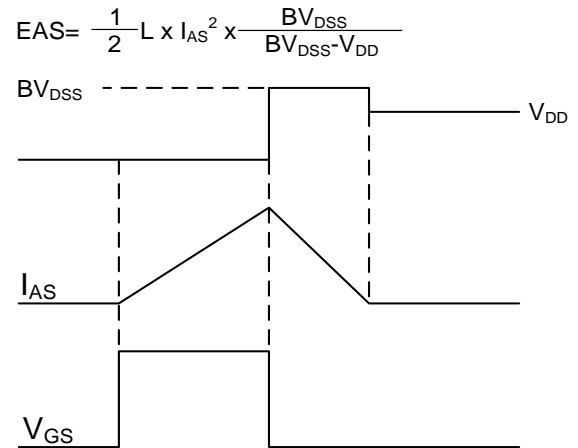
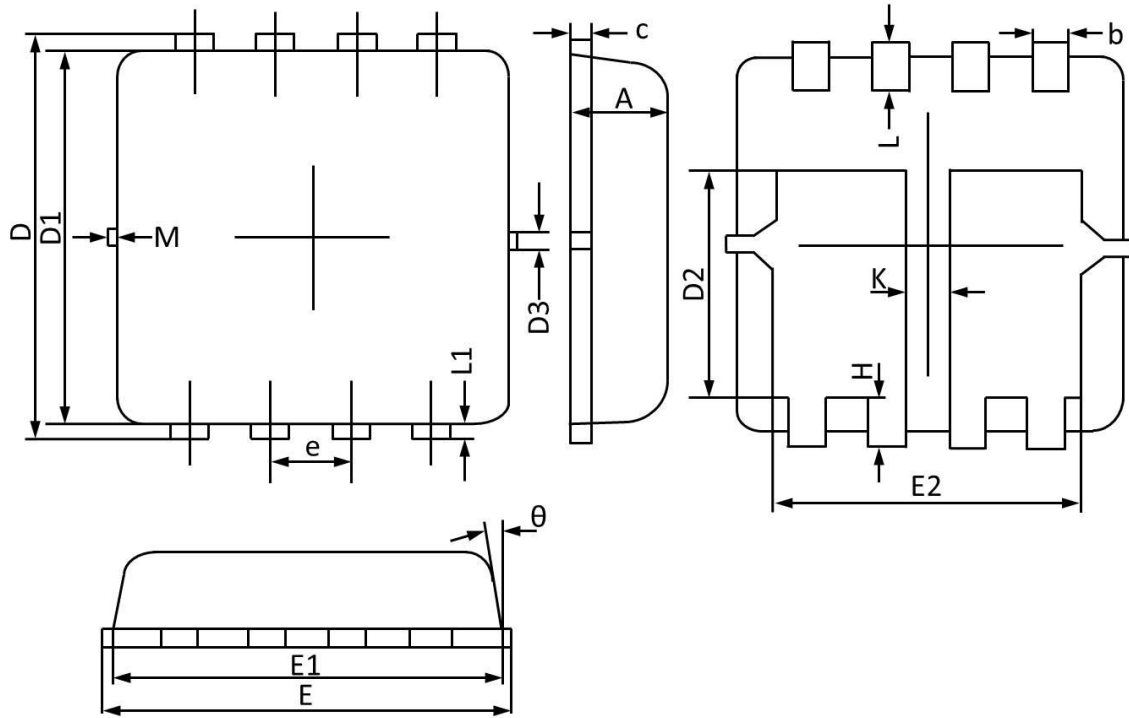


Fig.8 EAS Waveform

PPAK3x3 Dual PACKAGE INFORMATION



Symbol	Dimensions In Millimeters		Dimensions In Inches	
	Min	Max	Min	Max
A	0.700	0.800	0.028	0.031
b	0.250	0.350	0.010	0.013
c	0.100	0.250	0.004	0.009
D	3.250	3.450	0.128	0.135
D1	3.000	3.200	0.119	0.125
D2	1.780	1.980	0.070	0.077
D3	0.130 REF		0.005 REF	
E	3.200	3.400	0.126	0.133
E1	3.000	3.200	0.119	0.125
E2	2.390	2.590	0.094	0.102
e	0.650 BSC		0.026 BSC	
H	0.300	0.500	0.011	0.019
L	0.300	0.500	0.011	0.019
L1	0.130 REF		0.005 REF	
K	0.300 REF		0.012 REF	
θ	0°	12°	0°	12°
M	0.150 REF		0.006 REF	