

Plasmavision™  
PDS4229W-B

# SERVICE MANUAL

FUJITSU GENERAL Proprietary

Copy Prohibited

FUJITSU GENERAL LIMITED

# CONTENTS


IMPORTANT INFORMATION.....	2
SPECIFICATIONS.....	4
SETTING SIGNALS.....	5
CONNECTION .....	7
PART NAMES AND FUNCTIONS .....	8
TROUBLESHOOTING USING LED AND OSD .....	12
VOLTAGE OF EACH CONNECTOR.....	19
V <sub>s</sub> AND -V <sub>y</sub> ADJUSTMENT .....	20
GENERAL CONNECTION DIAGRAM .....	21
INSTALLATION .....	22
DISASSEMBLY FLOWCHART.....	29
PARTS LIST .....	43
TRANSPORTATION AND HANDLING RESTRICTIONS.....	44

# IMPORTANT INFORMATION

**WARNING : TO REDUCE THE RISK OF FIRE AND ELECTRIC SHOCK, DO NOT EXPOSE THIS PRODUCT TO RAIN OR MOISTURE.**

Please use a screen saver to prevent burning of an after-image on the screen.

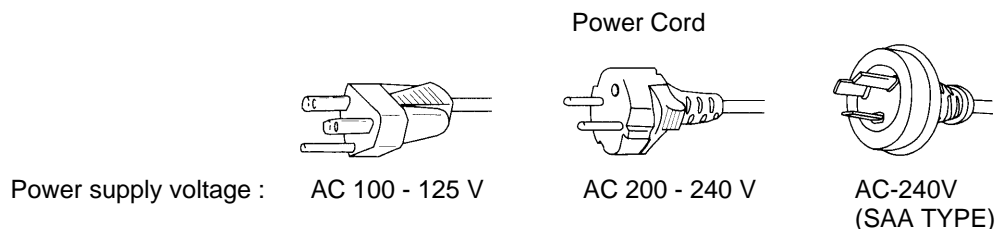
Electrical energy can perform many useful functions. This unit has been engineered and manufactured to assure your personal safety. But **IMPROPER USE CAN RESULT IN POTENTIAL ELECTRICAL SHOCK OR FIRE HAZARD.** In order not to defeat the safeguards incorporated into this unit, observe the following basic rules governing its installation, use and service. Please read these "Important Safeguards" carefully before use.

- Read all the safety and operating instructions before operating the unit.
  - Retain the safety and operating instructions for future reference.
  - Adhere to all warnings on the unit and in the operating instructions.
  - Follow all operating instructions.
  - Unplug the unit from the wall outlet before cleaning. Do not use liquid or aerosol cleaners. Use a damp cloth for cleaning.
  - Do not use attachments not recommended by the manufacturer as they may be hazardous.
  - Do not use the unit near water. Do not use the unit immediately after moving it from a low temperature to a high temperature environment, as this causes condensation, which may result in fire, electric shock, or other hazards.
  - Do not place the unit on an unstable cart, stand, or table. The unit may fall, causing serious injury to a child or adult, and serious damage to the unit. Mount the unit according to the manufacturer's instructions, using the mount recommended by the manufacturer.
  - When the unit is used on a cart, avoid quick stops, excessive force, and uneven surfaces which may cause the unit and cart to overturn, damaging the unit or causing possible injury to the operator.  
When transporting by car, place the unit as shown in the figure.
- 
- Slots and openings in the cabinet are provided for ventilation. These ensure reliable operation and protect the unit from overheating. These openings must not be blocked or covered. (The openings should never be blocked by placing the unit on a bed, sofa, rug, or similar surface. The unit should not be placed in a built - in installation such as a bookcase or rack unless proper ventilation is provided and the manufacturer's instructions are adhered to.) For proper ventilation, separate the unit from other equipment, which may obstruct ventilation. Keep the unit at least 10cm from other equipment.
  - Operate only with the type of power source indicated on the label. If you are not sure of the type of power supply to your home, consult your dealer or local power company.
  - This unit is equipped with a three-wire plug. This plug will fit only into a grounded power outlet. If you cannot insert the plug into the outlet, have an electrician install the proper outlet. Do not defeat the safety purpose of the grounded plug.
  - Route power cords so that they are not likely to be walked on or pinched by items placed on or against them. Pay particular attention to cords at doors, plugs, receptacles, and where they exit from the unit.
  - For added protection during a lightning storm, or when the unit is left unattended and unused for long periods of time, unplug it from the wall outlet and disconnect the cabling. This will prevent damage to the unit by lightning and power line surges.
  - Do not overload wall outlets, extension cords, or convenience receptacles on other equipment as this can result in fire or electric shock.
  - Never push objects of any kind into this unit through openings as they may touch dangerous voltage points or short-circuit parts that could result in a fire or electric shock. Never spill liquid of any kind onto the unit.

- Do not attempt to service this unit yourself as opening or removing covers may expose you to dangerous voltages and other hazards. Have all service done by qualified service personnel.
- Unplug this unit from the wall outlet and have it serviced by qualified service personnel in the following cases:
  - a) If the power supply cord or plug is damaged.
  - b) If liquid has been spilled, or objects have fallen onto the unit.
  - c) If the unit has been exposed to rain or water.
  - d) If the unit does not operate normally by following the operating instructions. Adjust only those controls that are covered by the Operation Manual, as improper adjustment of controls may result in damage and will often require extensive work by a qualified technician to restore the unit to normal operation.
  - e) If the unit has been dropped or damaged in any way.
  - f) A distinct change in performance indicates that service is required.
- When required, be sure the service technician uses replacement parts specified by the manufacturer or parts with the same characteristics as the original parts. Unauthorized substitutions may result in fire, electric shock, or other hazards.
- Upon completion of any service of repairs, ask the service technician to perform safety checks to determine that the unit is in proper operating condition.
- Place the unit more than one foot away from heat sources such as radiators, heat registers, stoves, and other devices (including amplifiers) that produce heat.
- When connecting other devices such as VCR's and personal computers, turn off the power to this unit to protect against electric shock.
- Do not place combustibles such as cloth, paper, matches, aerosol cans or gas lighters that prevent special hazards when overheated behind the cooling fan.
- Use only the accessory cord designed for this unit to prevent shock.

The power supply voltage rating of this unit is AC100-240V, but the attached power cord conforms to the following power supply voltage. Use only the Power Cord designated by our dealer to ensure Safety and EMC.

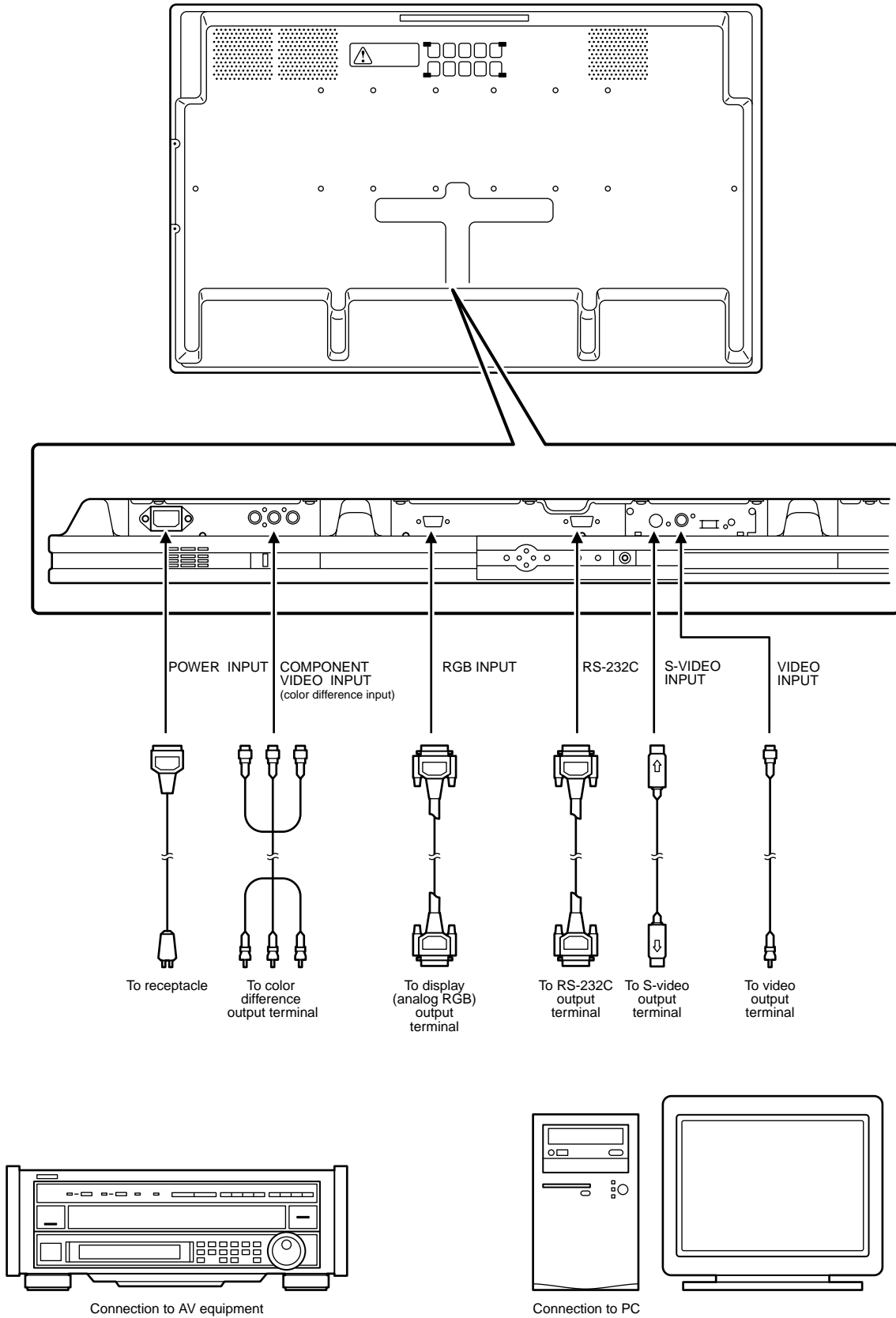
When used with other power supply voltages, the power cable must be changed.  
Consult your local dealer.



# SPECIFICATIONS

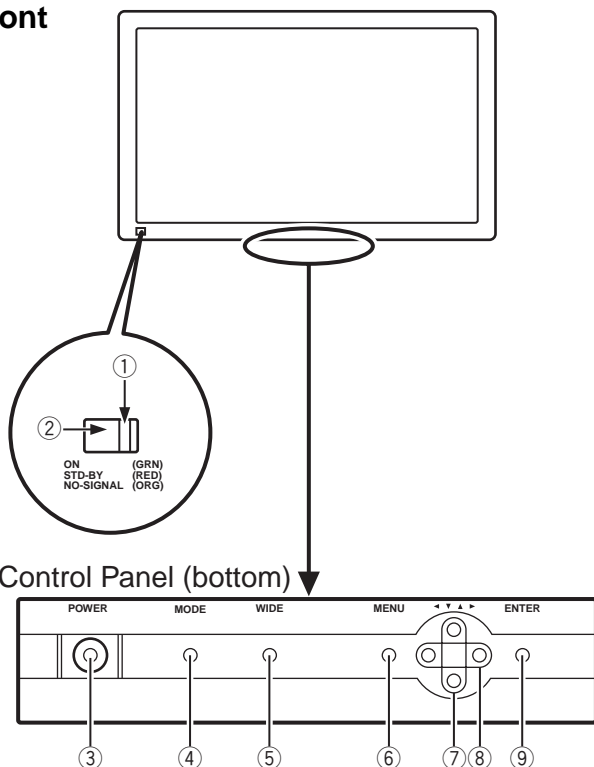
<b>Power source</b>	100-240V, 50/60Hz	<b>Accessories</b>	User's manual
<b>Power consumption</b>	370 W		Remote controller
<b>Display panel</b>	UE-41 type		Dry batteries (Type AA 2pcs.)
Screen size	92.0 (W) x 51.8 (H) [cm] 36.2 (W) x 20.4 (H) [inch]		Power cable
Aspect ratio	16 : 9		Ferrite core (2 types)
Number of pixels	852 (H) x 480 (V) pixels	<b>Options</b>	
Pixel pitch	1.08mm x 1.08mm	Stand	P-42TT29
Contrast ratio	580 : 1 (typ.)	Wall mounting unit	P-42WB12 installation angle
Brightness	400 cd/m <sup>2</sup> (typ.)		Horizontal 0° to 15°
Viewing angle	Max. 160 degrees	Ceiling mounting unit	P-42CT11 installation angle
			Available 0° to 15°
<b>Input terminals</b>		<b>Regulation</b>	
Video input	BNC connector 1.0V <sub>P-P</sub> /75Ω		PDS4229W-B
S video input	S terminal Y signal : 1.0V <sub>P-P</sub> /75Ω C signal : 0.3V <sub>P-P</sub> /75Ω		PDS4229E-B
Component video input	Three BNC terminals Y : 1V <sub>P-P</sub> /75Ω P <sub>b</sub> /B-Y: 0.7V <sub>P-P</sub> /75Ω P <sub>r</sub> /R-Y: 0.7V <sub>P-P</sub> /75Ω	• UL, CSA	
Analog RGB input	mD-sub : 15pin (3 row type) Picture signal : 0.7V <sub>P-P</sub> /75Ω SYNC signal : TTL level	Safety : UL1950	
Display frequency	Horizontal : 15.62 to 80.0kHz Vertical : 50.0 to 120Hz Dot clock : 50MHz Max XGA 68MHz Max	CSA C22.2 No.950	
<b>RS-232C</b>	D-sub 9-pin terminal	EMC : FCC Part15 Class A	
<b>Color system</b>	NTSC/PAL/SECAM/ 4.43NTSC/PAL60	ICES-003 Class A	
<b>Display colors</b>	16.7 million (256 each for R.G.B.)	• CE	
<b>Language</b>	English/German/French/Italy/ Portuguese/Spanish/ (E type:Russian)	Safety: EN60950 1992	
<b>Dimensions</b>	Width : 103.5 cm (46.7 inch) Height: 64.0 cm (25.2 inch) Depth : 8.5 cm (5.9 inch)	A1 1993	
<b>Net weight</b>	28.5kg	A2 1993	
<b>Environment (Operating)</b>	Temperature 0° to 40°C Relative humidity 20 to 90% Pressure 800 to 1,114 hPa	A3 1995	
		A4 1997	
		EMC : EN55022 1994	Class A
		EN61000-3-2, 1995	
		EN61000-3-3, 1995	
		EN55024, 1998	
		EN61000-4-2, 1995	
		EN61000-4-3, 1996	
		EN61000-4-4, 1995	
		EN61000-4-5, 1995	
		EN61000-4-6, 1996	
		EN61000-4-8, 1993	
		EN61000-4-11,1994	
		• AS	
		Safety : IEC950 A1/A2/A3/A	
		EMC : AS/NZS 3548	

# CONNECTION

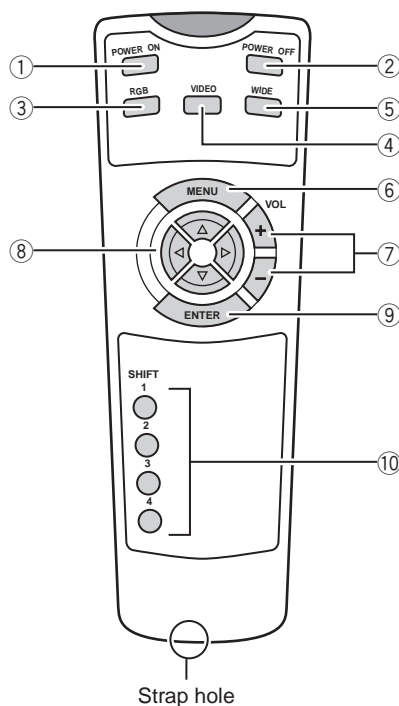


# PART NAMES AND FUNCTIONS

## Front



## Remote control



### ① Power indicator lamp

This lamp shows whether the main power is ON or OFF, as follows :

- Lit (red) : Standby
- Lit (green) : Power ON
- Lit (orange) : Power saving (DPMS: Power saving function) mode ON
- Flashing (red) : Malfunction (Flashes differently depending on the type of malfunction.)

### ② Remote control signal receiver

Receives signals from the remote control.

### ③ Power button [POWER]

Turns the power ON or OFF.

### ④ Input mode selector button [MODE]

Switches between image input modes.

### ⑤ Wide screen selector button [WIDE]

Switches the screen over to a desired wide screen.

### ⑥ Menu button [MENU]

Displays image and sound adjustment menus.

### ⑦ Adjustment buttons [▼/▲]

The [▼/▲] buttons can also be used to scroll through the options when a menu is displayed.

### ⑧ Adjustment buttons [◀/▶]

The [◀/▶] buttons can also be used to scroll through options in a menu, or to change values.

### ⑨ Set button [ENTER]

Press this button to finalize the selection of a desired option in a menu.

### ① Power ON button [POWER ON]

Turns the power ON.

### ② Power OFF button [POWER OFF]

Turns the power OFF.

### ③ RGB input mode selector button [RGB]

Switches between RGB input modes.

### ④ Video input mode selector button [VIDEO]

Switches between video input modes.

### ⑤ Wide screen selector button [WIDE]

Switches the screen over to a desired wide screen.

### ⑥ Menu button [MENU]

Use this button to display a desired menu for adjusting the image and sound.

### ⑦ Volume adjustment buttons [VOL +/-]

Unused.

### ⑧ Adjustment buttons [◀/▶/▼/▲]

Use these buttons to scroll through options in a menu and change values.

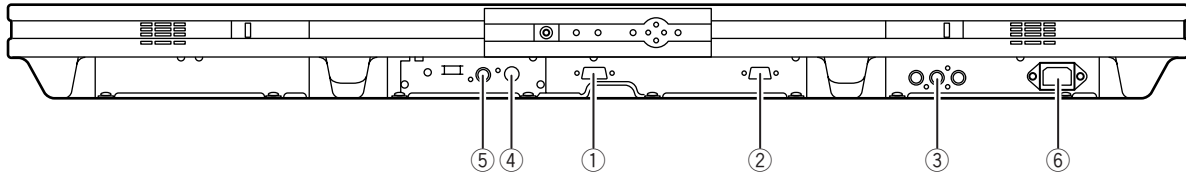
### ⑨ Enter button [ENTER]

Press this button to finalize the selection of a desired menu or option within a menu.

### ⑩ Display selector buttons [SHIFT 1-4]

When you use two or more displays, you can use these buttons to control up to four displays by assigning a unique number to each of the displays.

## Bottom



- ① **RS-232C terminal (RS-232C)**  
This terminal is provided for you to control the display from the PC. Connect it to the RS-232C terminal on the PC.  
When connecting a cable, attach a ferrite core to the cable.  
\* No RS-232C cable is supplied with the display. The type of cable to be used varies depending on the PC model.
- ② **RGB input terminal (RGB INPUT/mD-sub)**  
Connect this terminal to the PC's display (analog RGB) output terminal or decoder (digital broadcast tuner, etc.) output terminal.  
\* No RGB cable is supplied with the display. The type of cable to be used varies depending on the PC model.
- ③ **Component video input terminal (COMPONENT VIDEO INPUT)**  
Connect this terminal to the component video output (color difference output) terminal of your HDTV unit or DVD player.  
When connecting a cable, attach a ferrite core to the cable.
- ④ **S-video input terminal (S-VIDEO INPUT)**  
Connect this terminal to the S-video output terminal of your VCR or video disk player.
- ⑤ **Video input terminal (VIDEO INPUT)**  
Connect this terminal to the video output terminal of your VCR or video disk player.
- ⑥ **Power input terminal**  
Connect this terminal to the power cable supplied with the display.



# TROUBLESHOOTING USING LED AND OSD

## 1. Display

### (1) OSD

Two kinds of error messages are displayed on the screen, and the power is turned off 10 sec later.

### (2) LED

LED error is displayed continuously after the power is turned off.

## 2. Error types and check points

### (1) OSD

On screen display	Cause	Check point
ERROR MESSAGE CONDITION 1	Fan protector operated	<ul style="list-style-type: none"> <li>• Fan</li> <li>• Main power PCB</li> <li>• PFC PCB</li> <li>• Main/Digital PCB</li> </ul>
ERROR MESSAGE CONDITION 2	Temperature protector operated	<ul style="list-style-type: none"> <li>• Ambient temperature of unit</li> <li>• Main/Digital PCB</li> <li>• Temp. sensor IC757.</li> </ul>

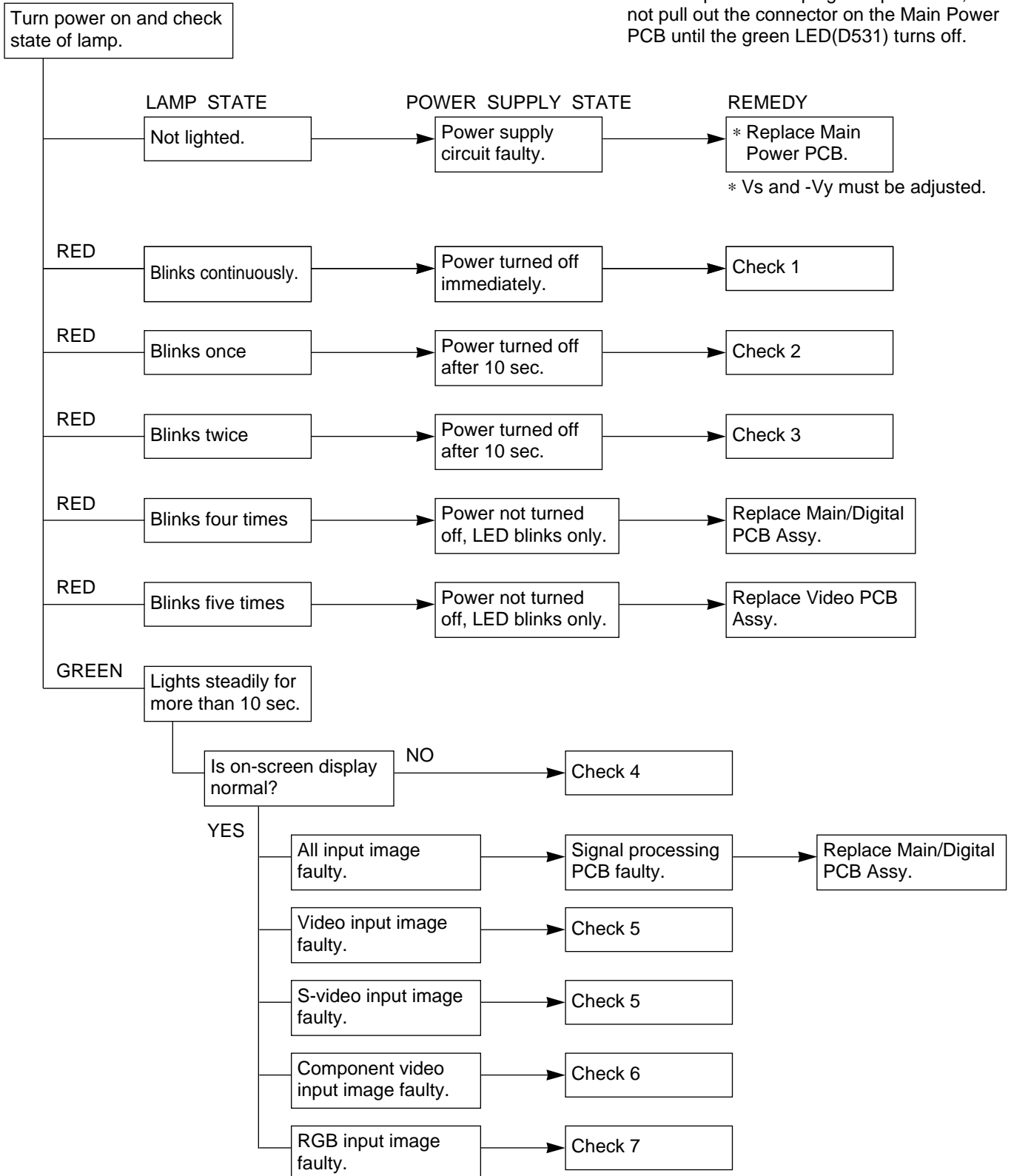
### (2) LED

LED lamp display status	Cause	Check point
Steady light (Red)	Stand-by status	—————
<b>Continuous</b> Flashes continuously (Red)	No power Power supply protector operated	<ul style="list-style-type: none"> <li>• Main power PCB</li> <li>• PFC PCB</li> <li>• PDP panel</li> </ul>
<b>1 time</b> Flashes once every 4 sec. (Red)	Fan protector operated	<ul style="list-style-type: none"> <li>• Fan</li> <li>• Main power PCB</li> <li>• Main/Digital PCB</li> </ul>
<b>2 times</b> Flashes twice every 5 sec. (Red)	Temperature protector operated	<ul style="list-style-type: none"> <li>• Ambient temperature of unit</li> <li>• Temperature sensor IC757</li> <li>• Main/Digital PCB</li> </ul>
<b>4 times</b> Flashes four times every 7 sec. (Red)	Main/Digital circuit faulty	<ul style="list-style-type: none"> <li>• Main/Digital PCB</li> </ul>
<b>5 times</b> Flashes five times every 8 sec. (Red)	Video circuit faulty	<ul style="list-style-type: none"> <li>• Video PCB Assy</li> </ul>

# TROUBLESHOOTING FLOWCHART

## LED lamp blinking

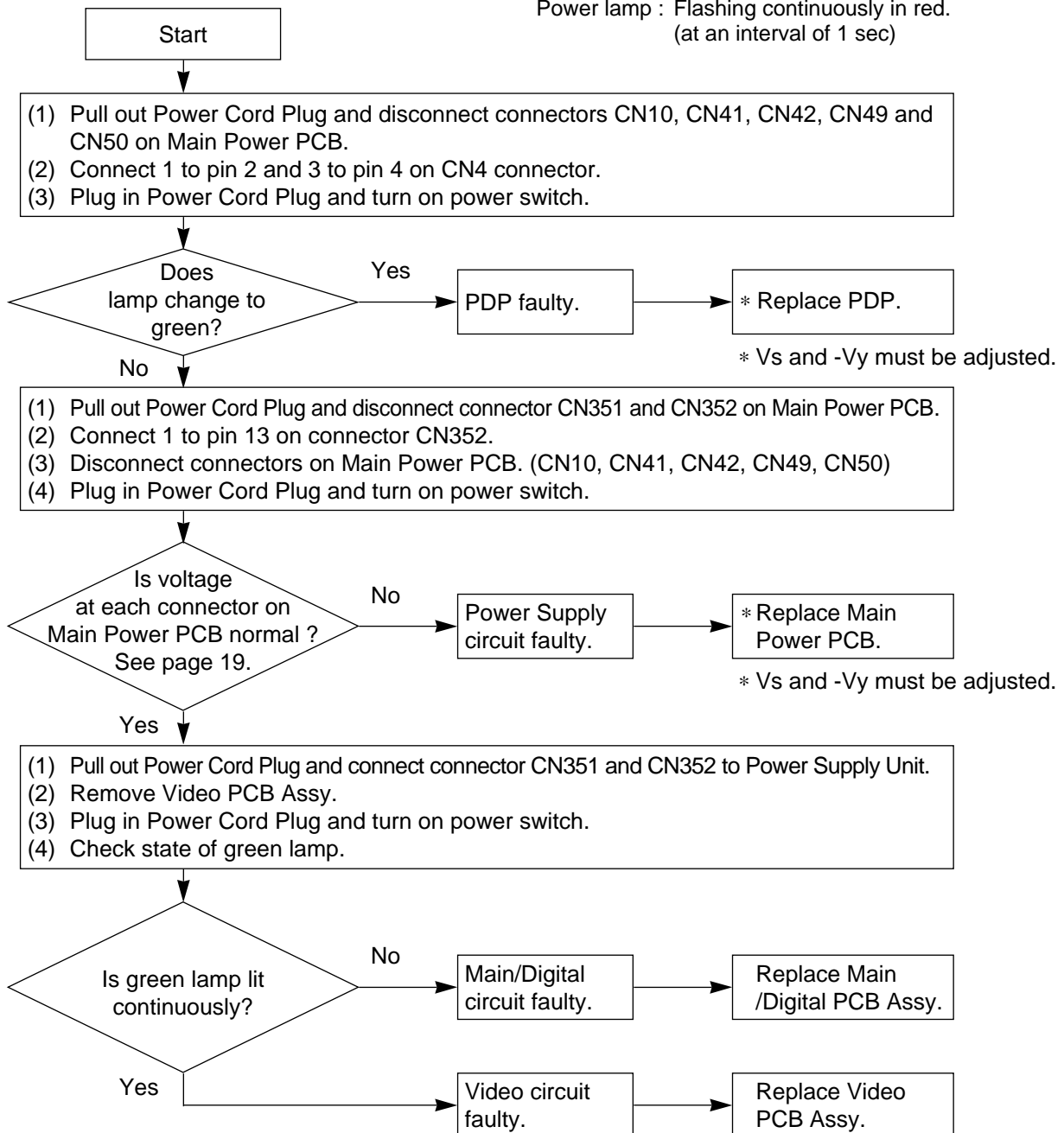
- Note : 1. Since a voltage is applied to the Main Power PCB and PFC PCB heat sinks while the set is operating, do not touch the heat sinks.  
 2. If the PFC PCB insulation sheet is not installed when assembling, the PFC PCB fuse will blow.  
 3. After the power cord plug was pulled out, do not pull out the connector on the Main Power PCB until the green LED(D531) turns off.



# Check 1

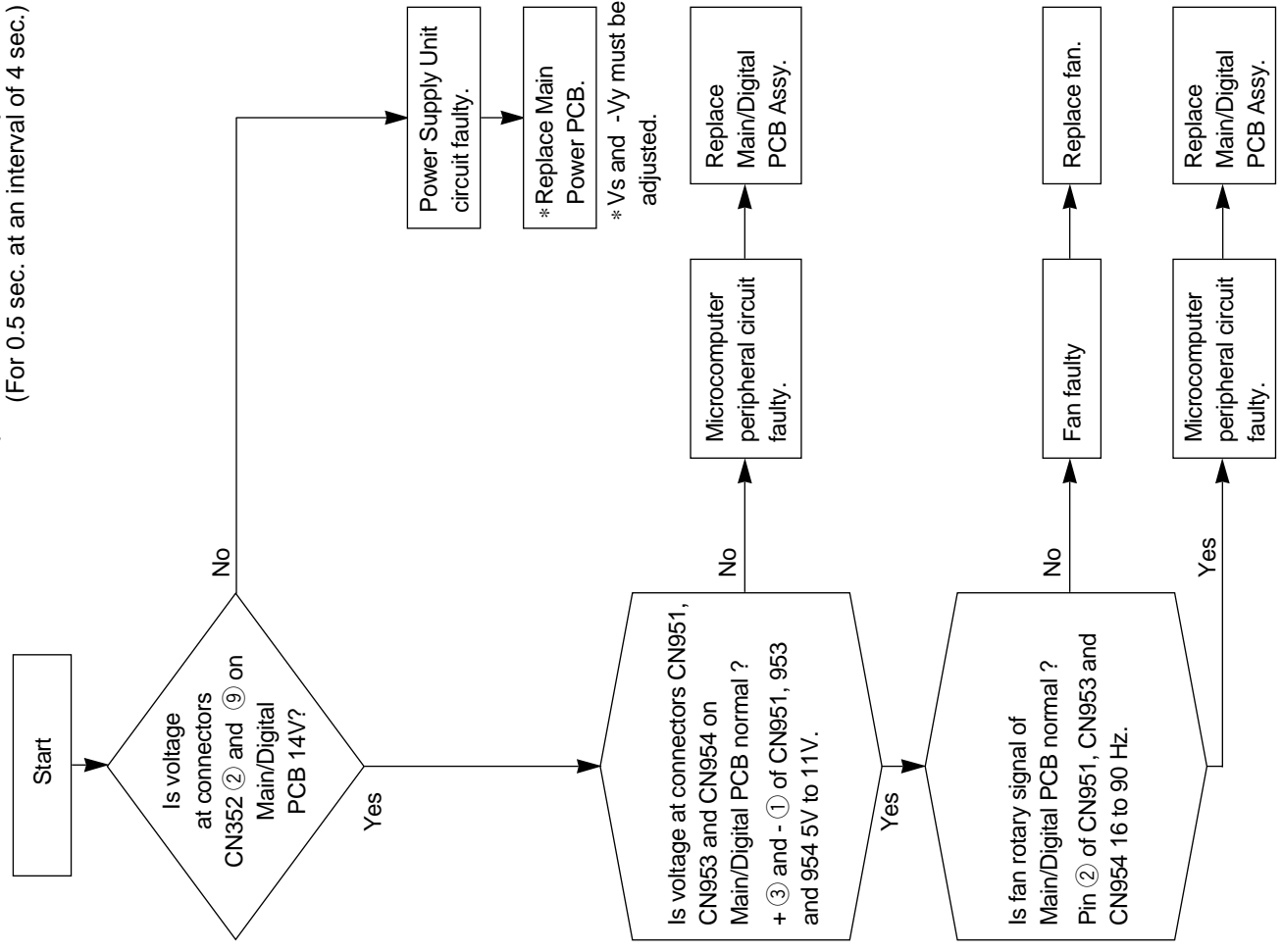
Power supply protector operated

Power lamp : Flashing continuously in red.  
(at an interval of 1 sec)



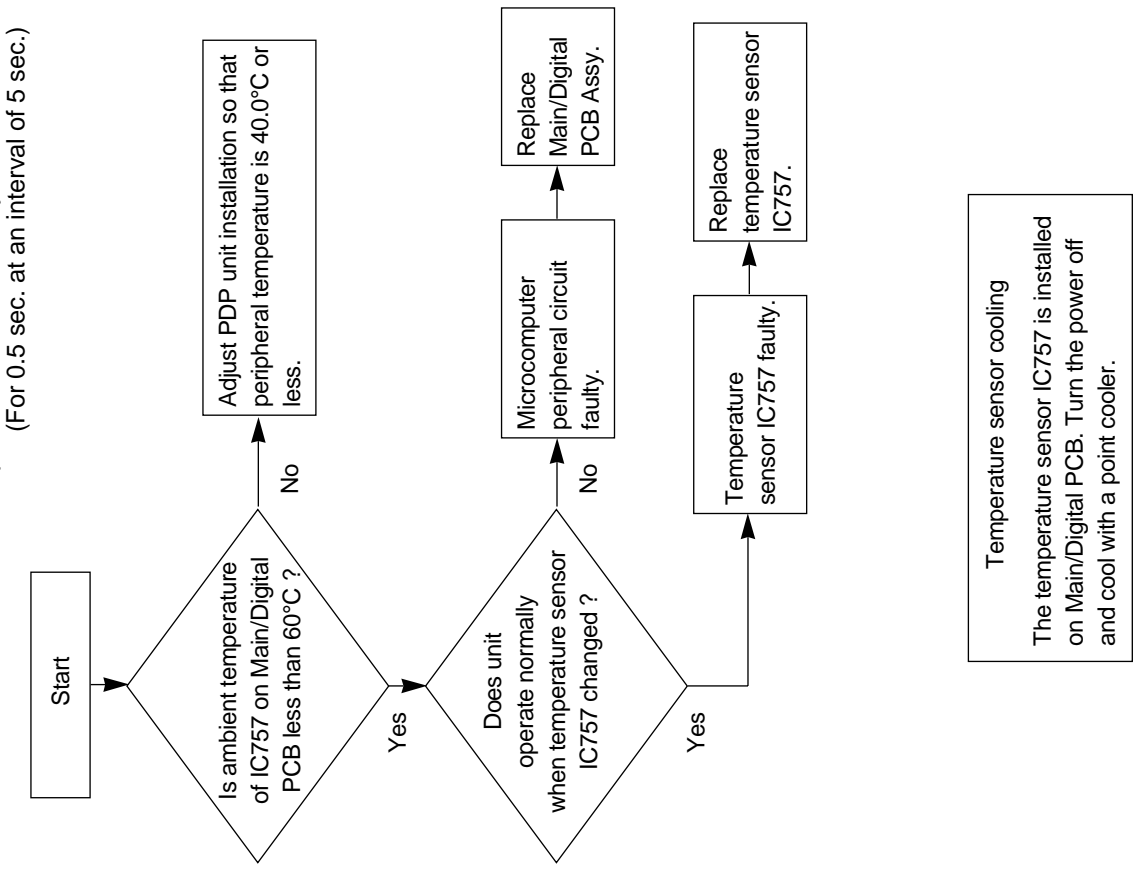
### Check 2

Fan protector operated  
Power lamp: Flashes once intermittently in red.  
(For 0.5 sec. at an interval of 4 sec.)



### Check 3

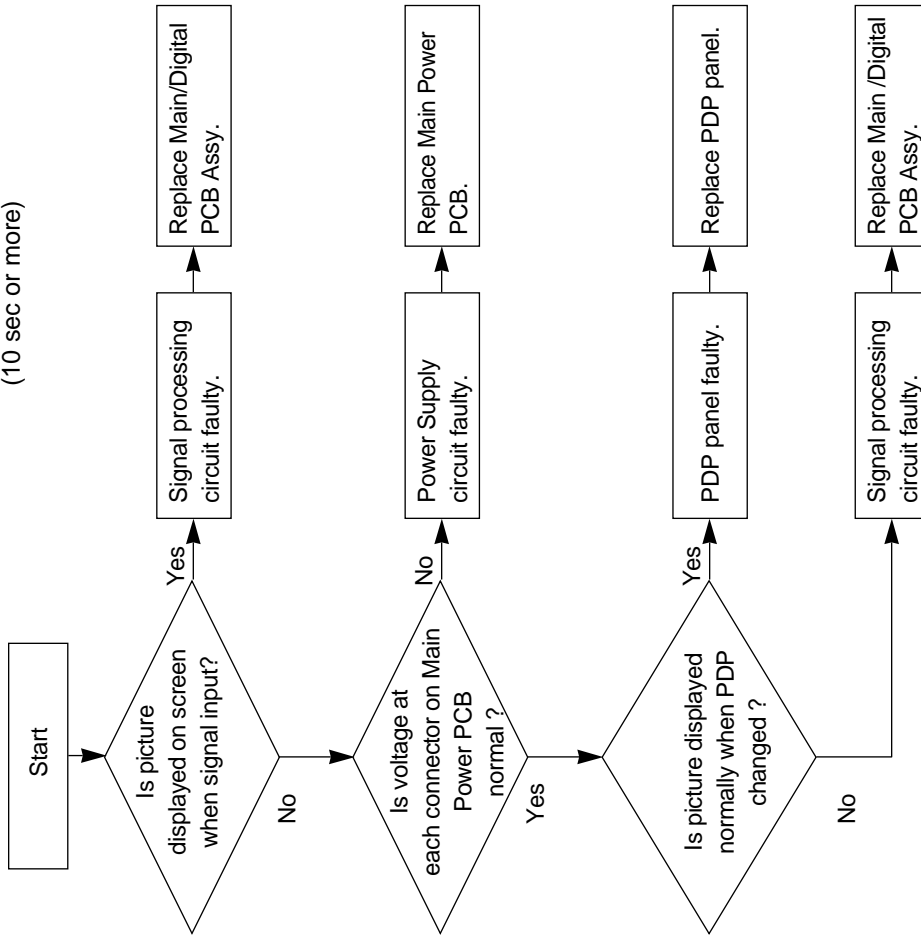
Temperature protector operated  
Power lamp: Flashes intermittently twice in red.  
(For 0.5 sec. at an interval of 5 sec.)



### Check 4

OSD is not displayed.

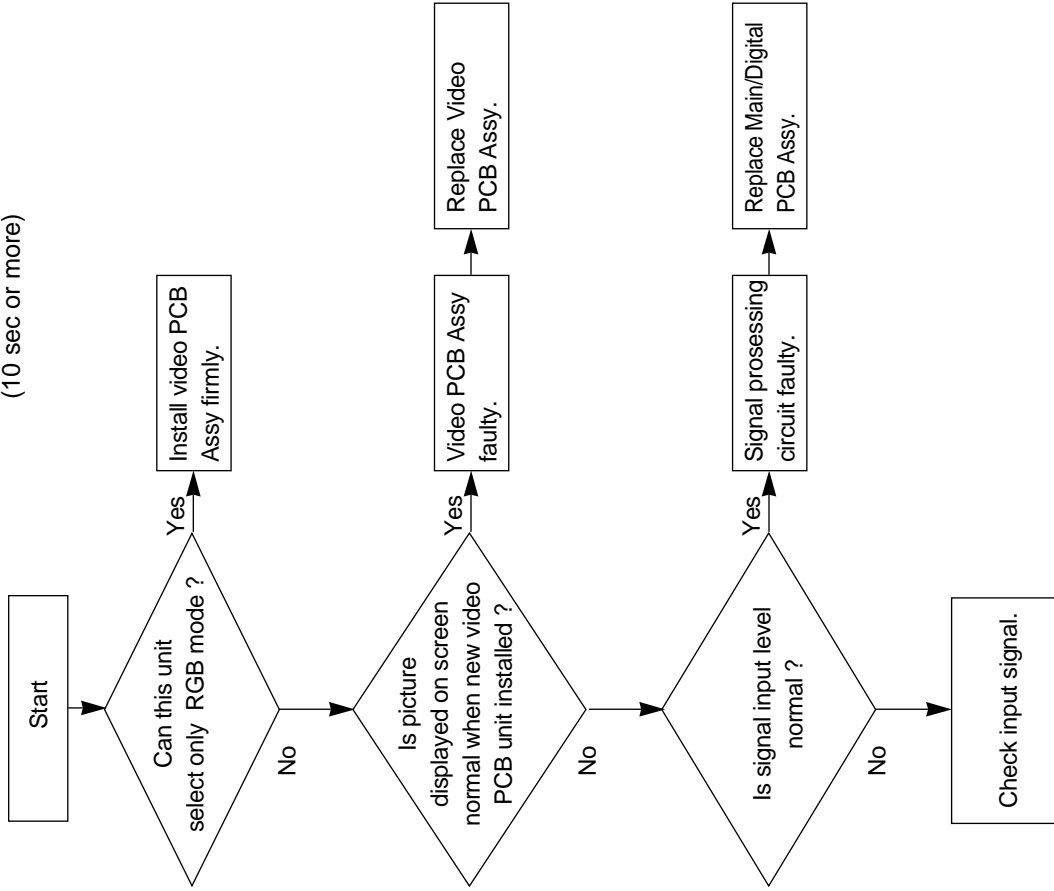
Power lamp : Lighted green.  
(10 sec or more)



### Check 5

Video/S-video input signals are abnormal.

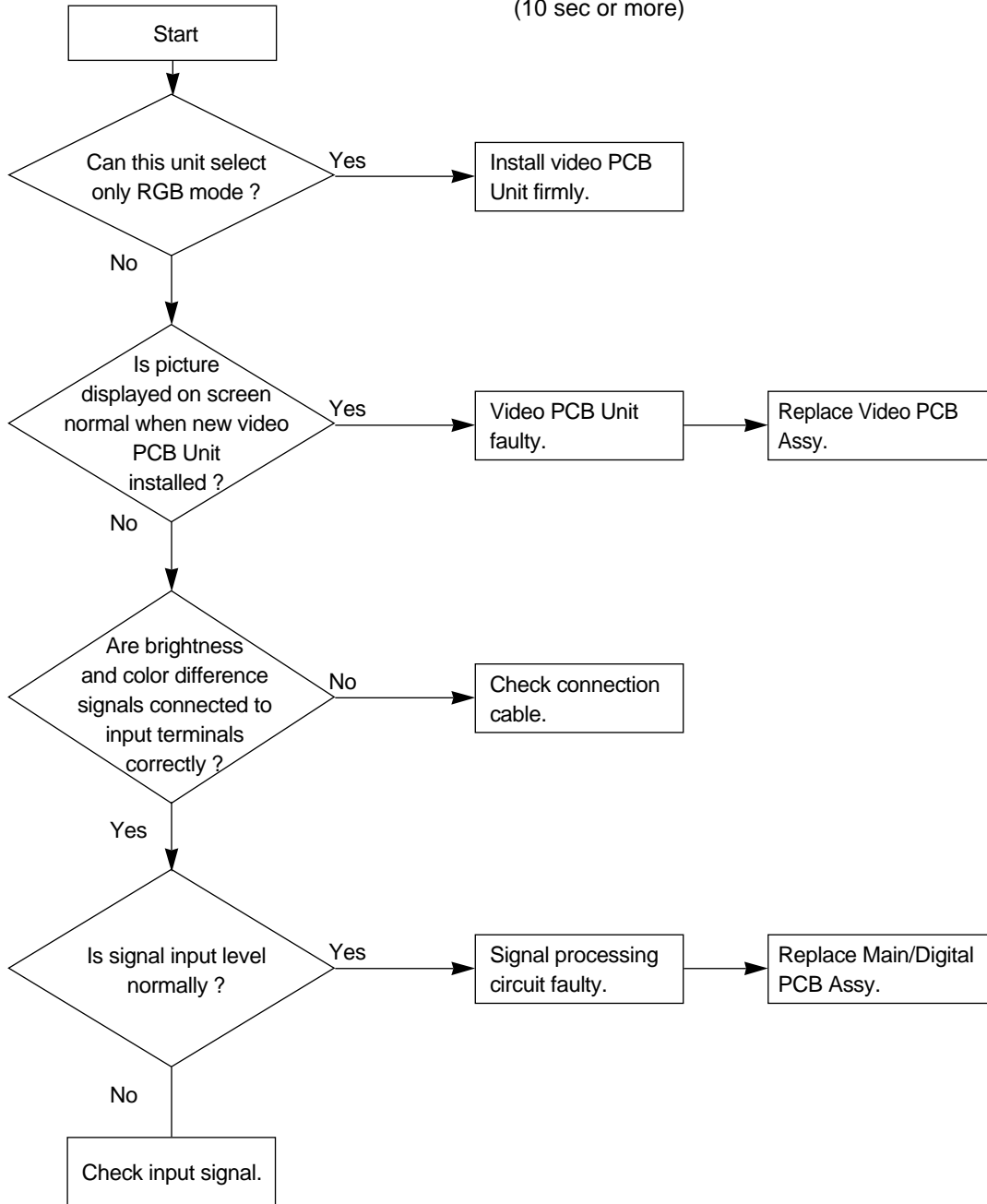
Power lamp : Lighted green  
(10 sec or more)



## Check 6

Component input signals (Y/Pb/Pr) are abnormal.

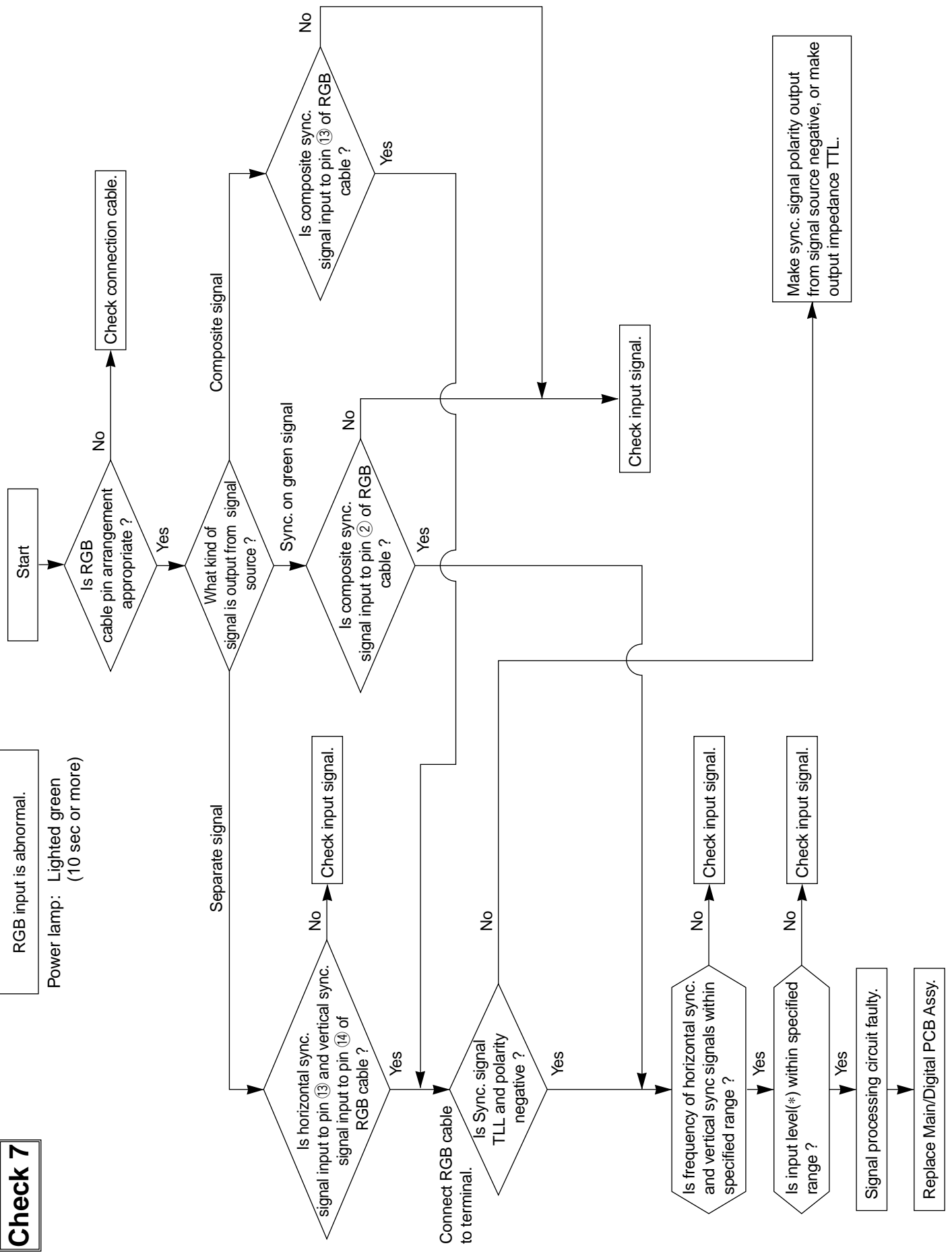
Power lamp : Lighted green  
(10 sec or more)



\* SYNC. signals are added to the Y signal.

# Check 7

RGB input is abnormal.  
 Power lamp: Lighted green  
 (10 sec or more)



# VOLTAGE OF EACH CONNECTOR

## 1. How to measure the voltages on the Main Power Supply PCB in protect mode.

- Since a voltage is applied to the Main Power PCB and PFC PCB heat sinks while the set is operating, do not touch the heat sinks.
- After the power cord plug was pulled out, do not pull out the connector on the Main Power PCB until the Green LED (D531: Discharge check LED) turns off.

- 1) Disconnect CN4, CN10, CN41, CN42, CN49 and CN50
- 2) Connect pins 1 and 2, 3 and 4 of CN4.
- 3) Press the power button.

## 2. On the Main Power Supply PCB. (M00BV)

CN352			
No.	NAME	SPEC.	Ground
1	P5V	5.0V +/- 0.25V	4
3	+14V	14.0V +/- 0.7V	4
10	-8V	-8.0V +/- 0.4V	6

CN351			
No.	NAME	SPEC.	Ground
3	+2.5V	2.5V +/- 0.13V	2
6	+3.3V	3.3V +/- 0.17V	5
10	+6.5V	6.5V +/- 0.33V	9

CN41			
No.	NAME	SPEC.	Ground
1	Vcc 1	5.0V +/- 0.25V	2
9	Vs	180.0V +/- 3.2V	5

CN50			
No.	NAME	SPEC.	Ground
3	Va	65.0V +/- 1.3V	4
1	Vw	170.0V +/- 5.0V	2

CN42			
No.	NAME	SPEC.	Ground
3	-Vy	-165.0V +/- 3.0V	5
4	Vsc	120.0V +/- 3.5V	3

CN10			
No.	NAME	SPEC.	Ground
3	Ve	16.0V +/- 0.4V	4



# Vs AND -Vy ADJUSTMENT

When the Main Power Supply PCB and PDP panel are replaced, Vs and -Vy must be adjusted.

Preparation : Heat-run for 5 minutes with a white pattern in the wide mode.

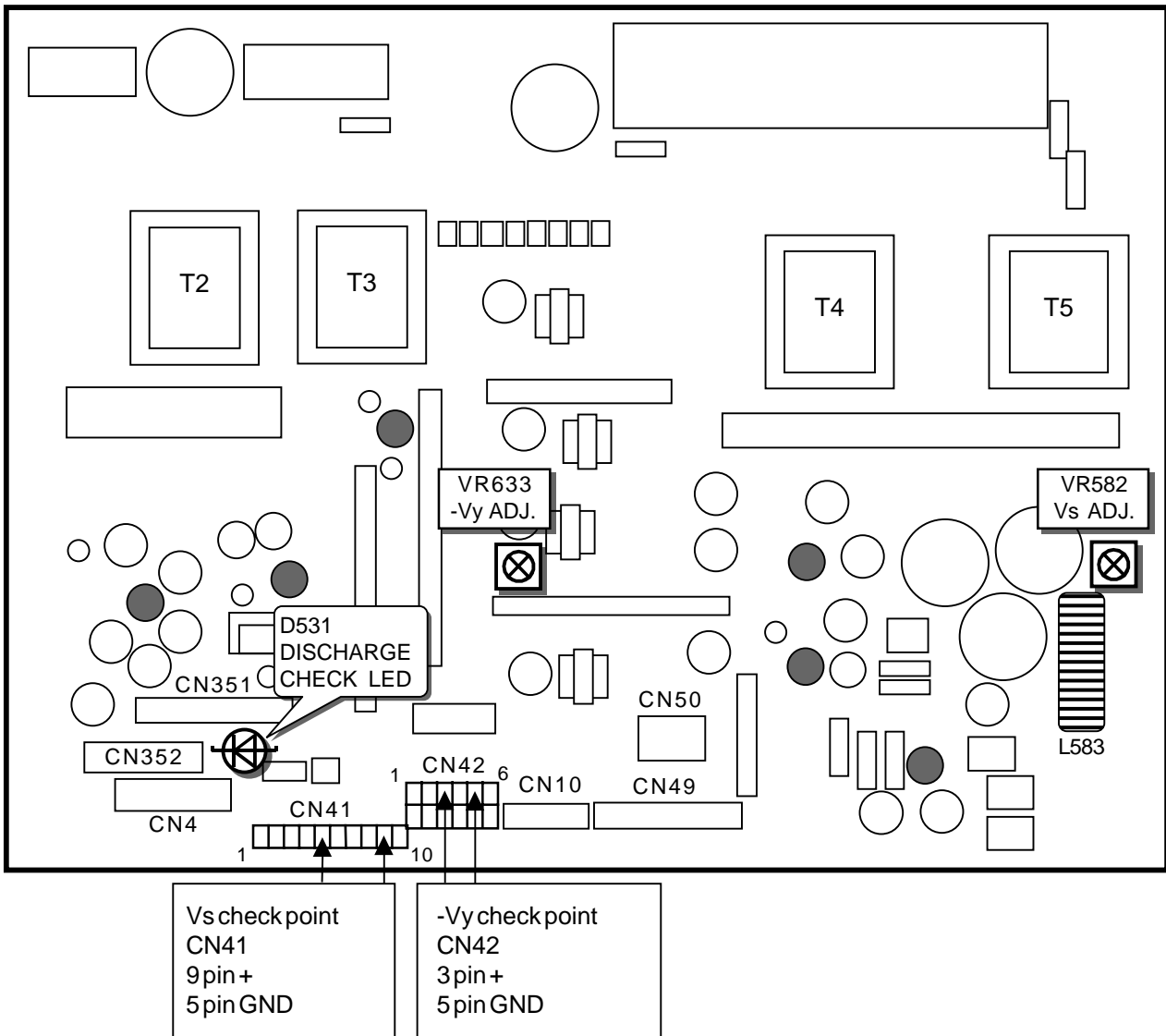
Adjustment : Adjust the Vs and -Vy in the no-signal state.

Check points : Refer to the drawing shown below.

Adjustment points : Refer to the drawing shown below.

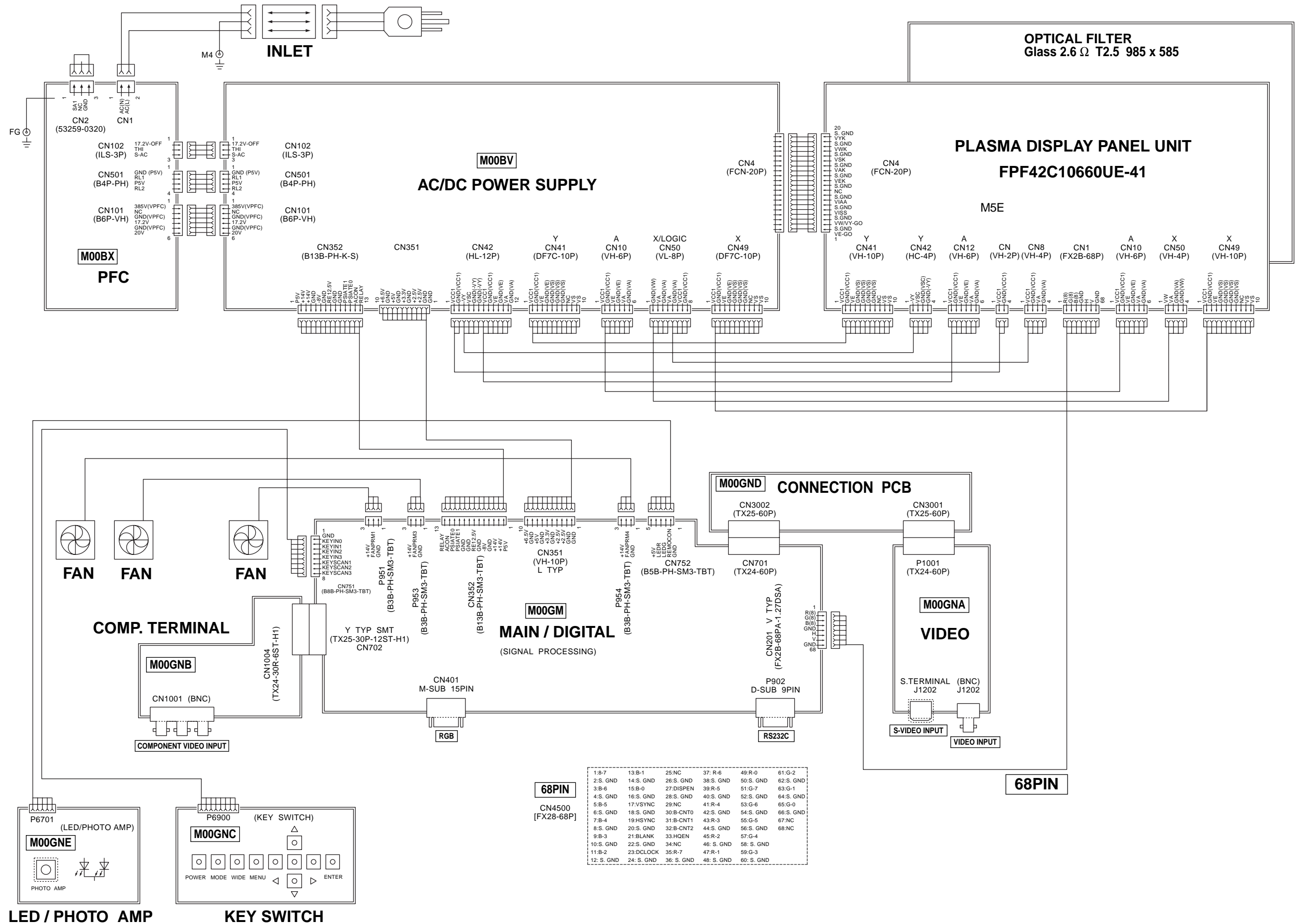
Adjustment value : Within +/- 0.1V of voltage indicated on the label of the PDP panel.

– MAIN POWER SUPPLY PCB (M00BV-PCB) –



NOTE : After the power cord plug was pulled out, do not pull out the connector on the Main Power PCB until the Green LED (D531: Discharge check LED) turns off.

# GENERAL CONNECTION DIAGRAM



1:8-7	13:B-1	25:NC	37: R-6	49:R-0	61:G-2
2:S. GND	14:S. GND	26:S. GND	38:S. GND	50:S. GND	62:S. GND
3:B-6	15:B-0	27:DISPEN	39:R-5	51:G-7	63:G-1
4:S. GND	16:S. GND	28:S. GND	40:S. GND	52:S. GND	64:S. GND
5:B-5	17:VSYNC	29:NC	41:R-4	53:G-6	65:G-0
6:S. GND	18:S. GND	30:B-CNT0	42:S. GND	54:S. GND	66:S. GND
7:B-4	19:HSYNC	31:B-CNT1	43:R-3	55:G-5	67:NC
8:S. GND	20:S. GND	32:B-CNT2	44:S. GND	56:S. GND	68:NC
9:B-3	21:BLANK	33:HGEN	45:R-2	57:G-4	
10:S. GND	22:S. GND	34:NC	46: S. GND	58: S. GND	
11:B-2	23:DCLOCK	35:R-7	47:R-1	59:G-3	
12: S. GND	24: S. GND	36: S. GND	48: S. GND	60: S. GND	

# INSTALLATION

---

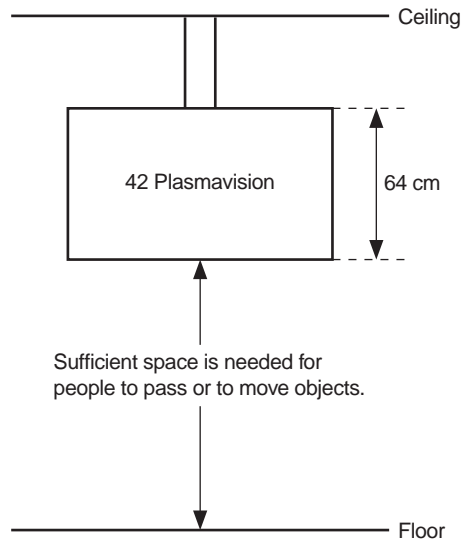
## INSTALLATION PRECAUTIONS

### 1. Installation Environment

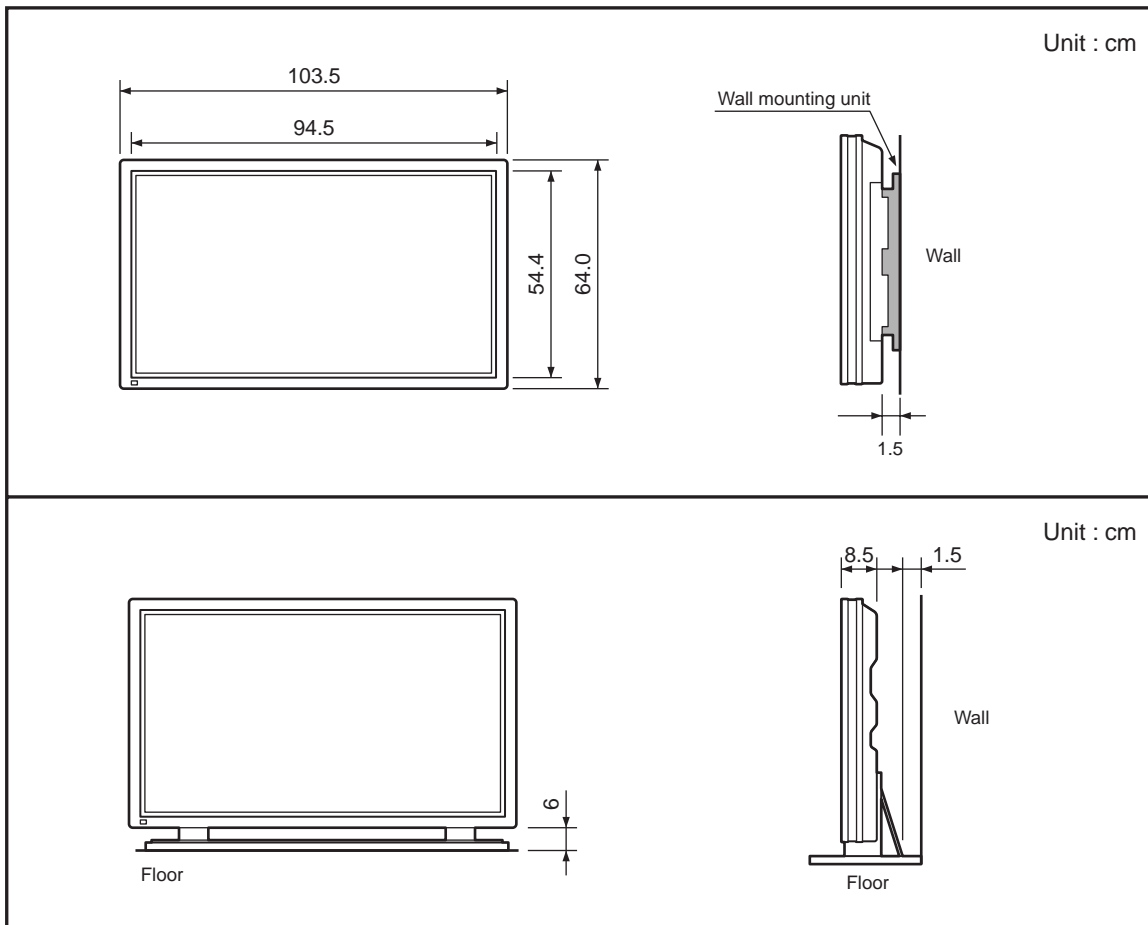
- 1) Do not expose the display directly to vapor or heat. Protect the unit from rain or water.
- 2) The display uses glass material, and cracks easily. So, do not subject it to vibration and shock. When carrying the display, always use two people so that vibration and shock is not applied to the display.
- 3) Do not disturb the radiation of heat from the rear, sides and top of the unit. Install the unit in a well ventilated place. Use the unit within an ambient temperature range of 0°C ~ 40°C.
- 4) Displaying a static picture for a long time may burn an after-image on the screen, the same as a CRT. To prolong the life of the unit, turn off the display when it is not in use, scroll the picture, and use a screen saver. Periodically display a uniformly bright picture over the entire screen, add complimentary colors, and insert moving pictures. Use half tones and intermediate colors, if possible, because the higher the brightness, the easier burning occurs. The problem does not occur with moving pictures.
- 5) Do not expose the optical filter directly to the sun for a long time. The characteristics of the optical filter will change and discoloration may occur.
- 6) Do not wipe the optical filter with a solvent such as benzene or paint thinner. The optical filter may peel off. Wipe the surface of the optical filter with a soft, lint-free cloth such as cotton. The surface of the optical filter scratches easily so do not rub or hit it with a hard object.
- 7) The brightness and contrast of the PDP are still inferior to those of a CRT. Also note that the ambient light may cause the screen become white and difficult to read. Therefore, it is recommended that the ambient light be reduced.
- 8) Note that light from the back may adversely affect the screen. Avoid backlighting as much as possible.
- 9) The display may cause radio frequency interference sensors which detect low level and low frequency radiowaves. If an improperly shielded VCR or signal cable is brought close to this unit, noise may appear on the screen. To avoid this, move the unit to a new location.
- 10) Near infrared rays are radiated from the front of the display panel. These rays may interfere with the infrared ray remote control unit of other equipment and with infrared communication systems. In this case, change the direction of the equipment relative to the screen or move the unit away from the other equipment so that the rays radiated directly from the screen (or reflected rays, depending on the situation) have no effect on other equipment.
- 11) When the display is installed in a quiet room, it is recommended that a thick curtain be hung on the wall behind the display to reduce the noise.
- 12) Dark gray scenes may appear purplish or greenish. To avoid this, increase the brightness.

## 2. Installation Precautions

- 1) The support must withstand the weight of the unit.  
The standards of the country must be met.
- 2) Special care should be taken in areas where earthquakes occur frequently.  
(At a magnitude of six, each pipe must withstand a load of 100 to 150 kg).
- 3) Grounding should be performed.  
(Ground connected to power outlet is acceptable).
- 4) Sufficient passage space.
- 5) Installation should be performed by at least two peoples. A simple lifter should be used.
- 6) When carrying the unpacked unit, do not hold the Optical Filter.



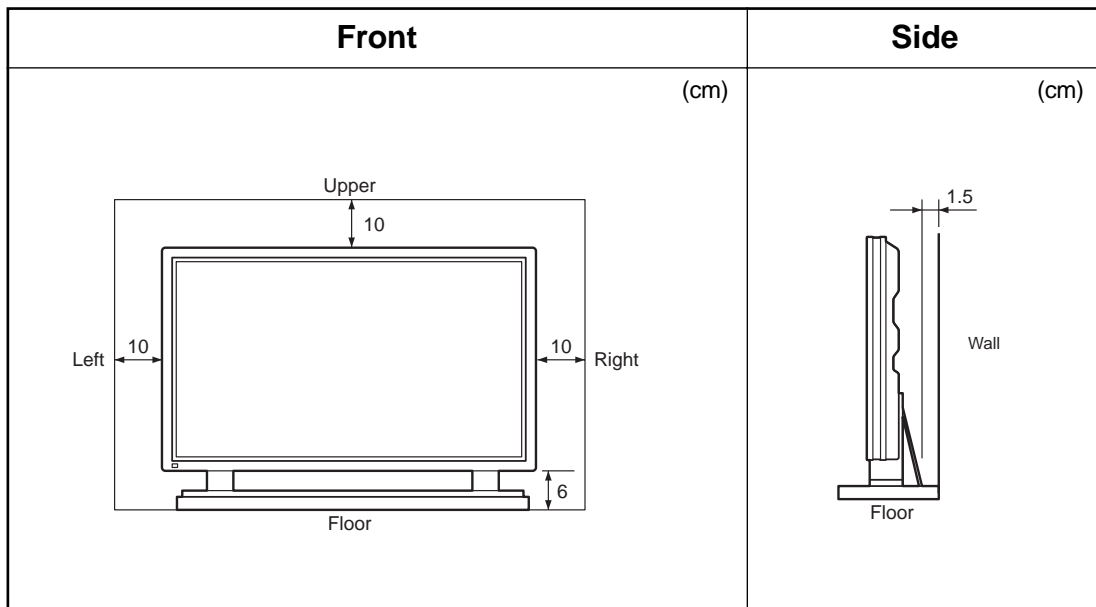
## 3. Outline Drawings



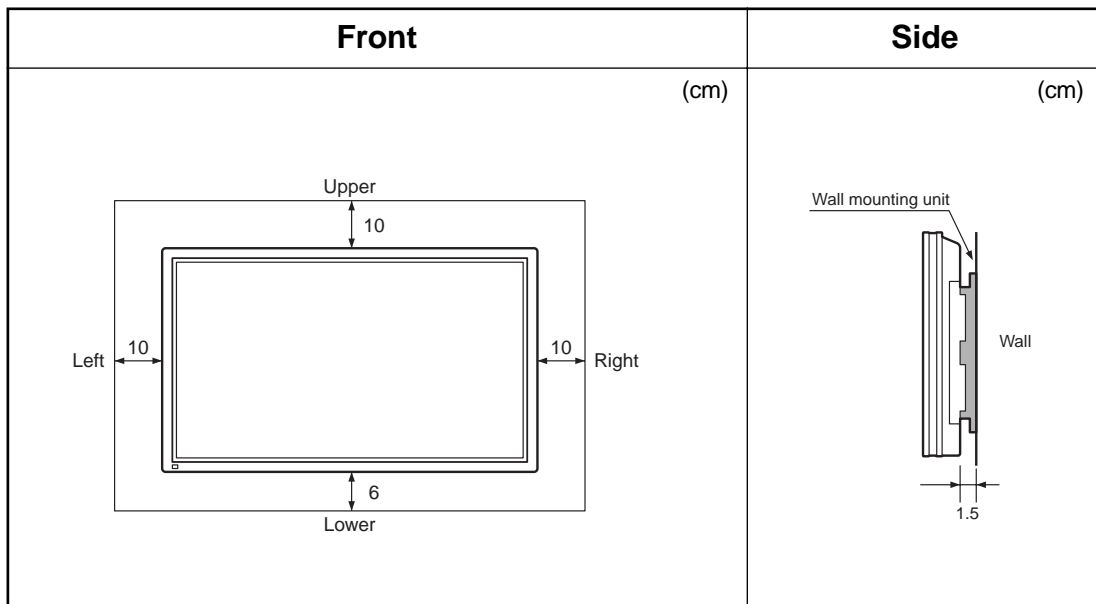
#### 4. Space Required Around a Plasma Monitor

- Make sure that the display is installed where the temperature can be maintained between 0 °C to 40 °C.
- Never attempt to tilt the display sideways or backward.
- To prevent the power and other cables from being accidentally pulled, make sure that they run along the wall or through corners.
- The display can be installed with either of its sides facing down.

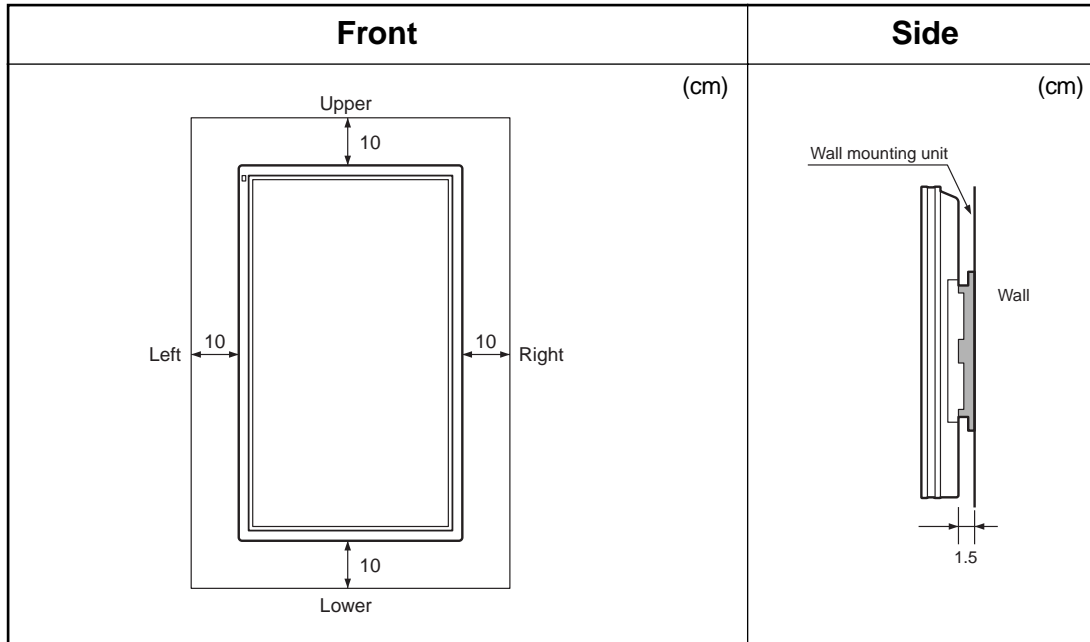
#### When using the stand



#### When using the wall-mounting unit (Horizontal type)



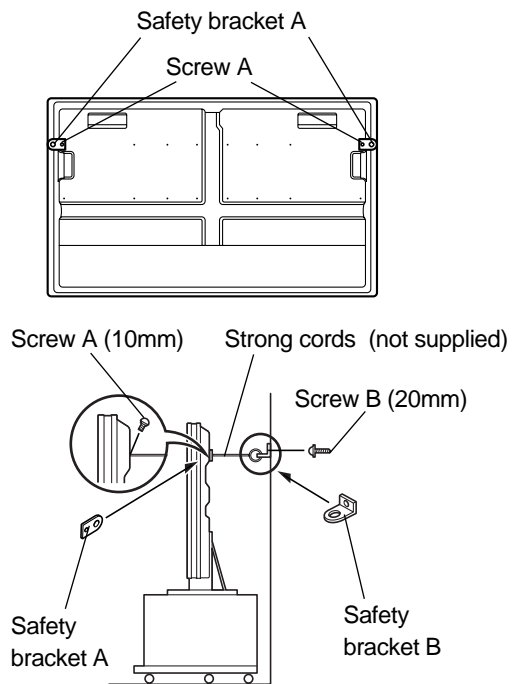
## When using the wall-mounting unit (Vertical type)



## 5. Desktop Stand (Model P-42TT29)

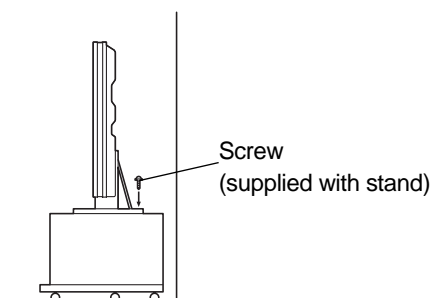
You need two strong cords.

- (1) Attach a bracket to each hole at the rear of the display.  
To do this, use screw A (10mm long) to attach safety bracket A, supplied with the display, to the hole at the rear of the display.
- (2) Attach two brackets to the wall.  
To do this, use screws B (20mm long) to attach safety brackets B, supplied with the display, to the wall.  
\* To make sure that the display is stable, attach wall brackets at the same height as (or slightly lower than) the display brackets.
- (3) Tie brackets A and B together  
To do this, use strong cords to fasten the display securely to the wall.



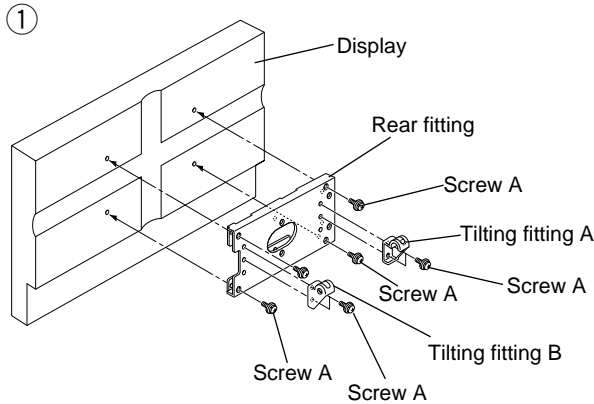
Use the two screws supplied with the stand to fasten the display using the holes provided at the rear of the stand.

See the stand (P-42TT29 type) instruction manual for more information.

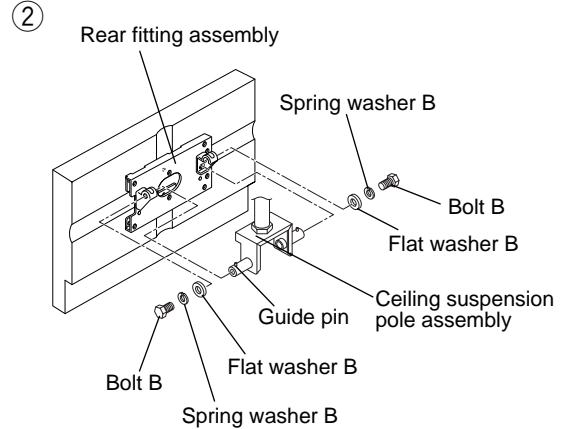


## 6. Ceiling Mounting Unit (Model P-42CT11)

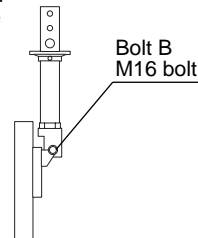
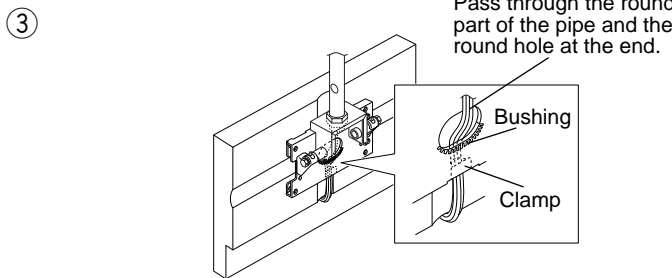
### 1) Assembling



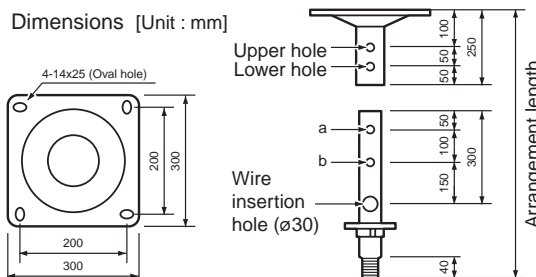
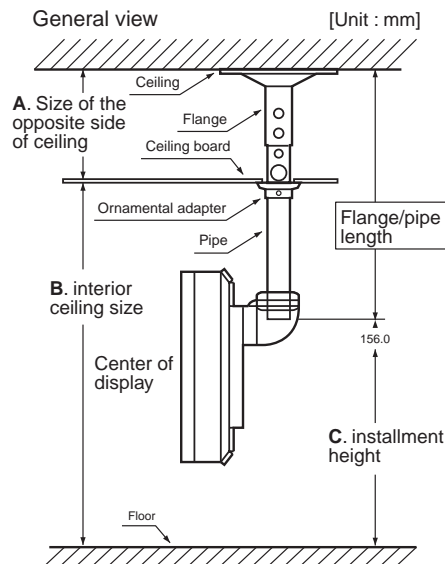
Tightening torque : 40kgf·cm



Tightening torque : 350kgf·cm



### 2) Optional parts (pipe set)



### Selection of pipe length (x)

[Unit : mm]

Set name	Pipe length : (X)		Combined length	
			Upper hole of flange	Lower hole of flange
S	400	a	400	450
		b	500	550
A	600	a	600	650
		b	700	750
B	800	a	800	850
		b	900	950
C	1000	a	1,000	1,050
		b	1,100	1,150
D	1200	a	1,200	1,250
		b	1,300	1,350
E	1400	a	1,400	1,450
		b	1,500	1,550

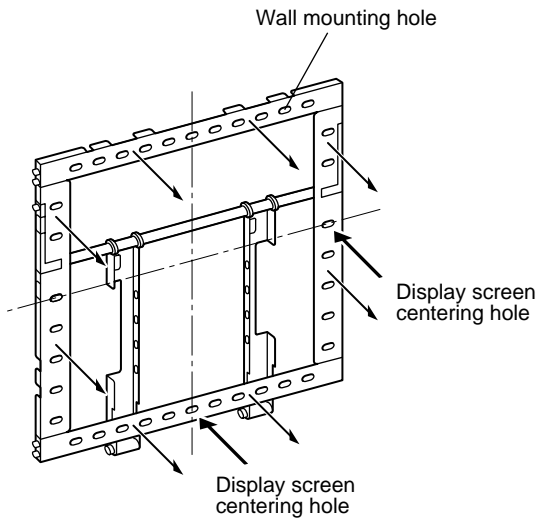
### Parts included in sets A to E and S [Unit : mm]

Part Name	Q'ty	Treatment
Hanger pipe	1	Black
Hanger flange	1	Black
M48 nut	2	Black
Ornamental adapter	1	Black
Split pin	1	Unpainted

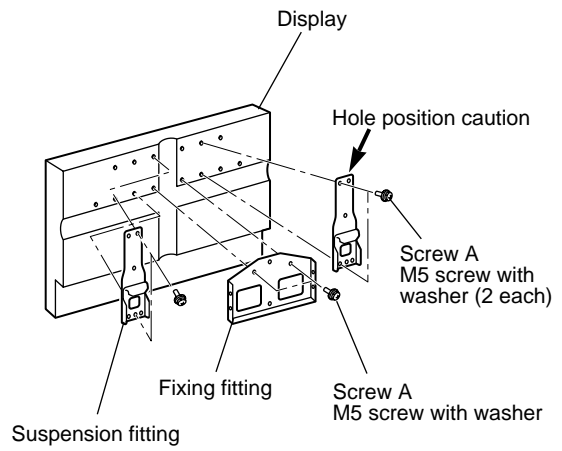
## 7. Wall Mounting Unit (Model P-42WB12)

### 1) Assembling

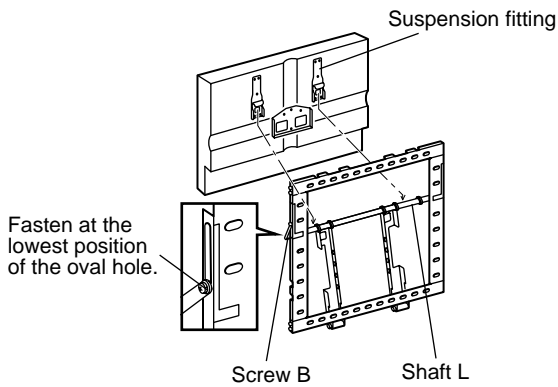
#### ① Assembling the Mounting bracket



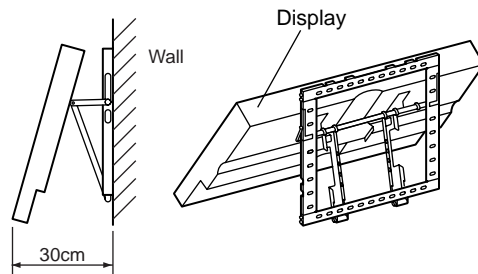
#### ② Fastening to the display



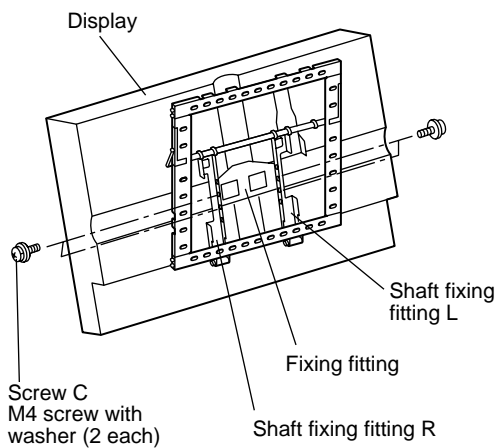
#### ③ Hanging on the Wall Mounting Unit



#### ④ Cabling



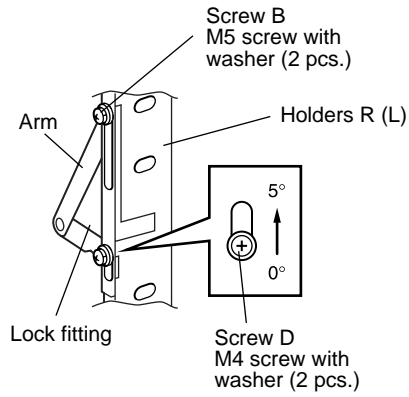
#### ⑤ Fastening the display





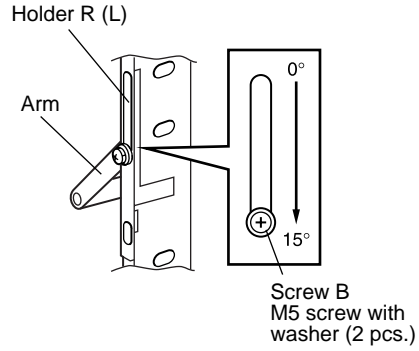
⑥ Adjusting the installation angle

- For a display installation angle of 0° to 5° (horizontal and vertical installation)



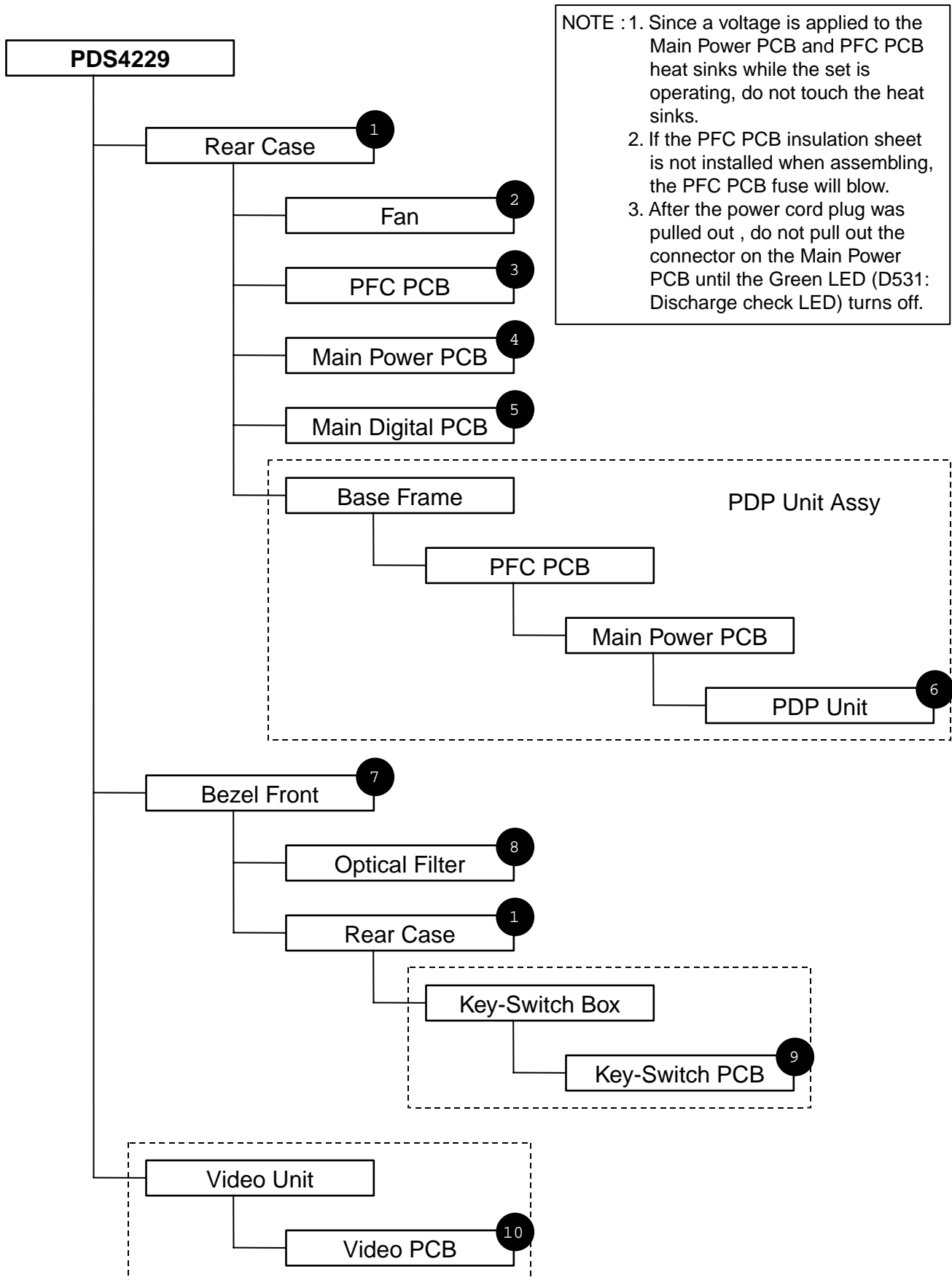
For an angle of 0° to 5°, fasten at two places: the arm mounting screws A and the lock fitting mounting screws C (4 places on both sides).

- For a display installation angle of 5° to 15° (horizontal installation only)

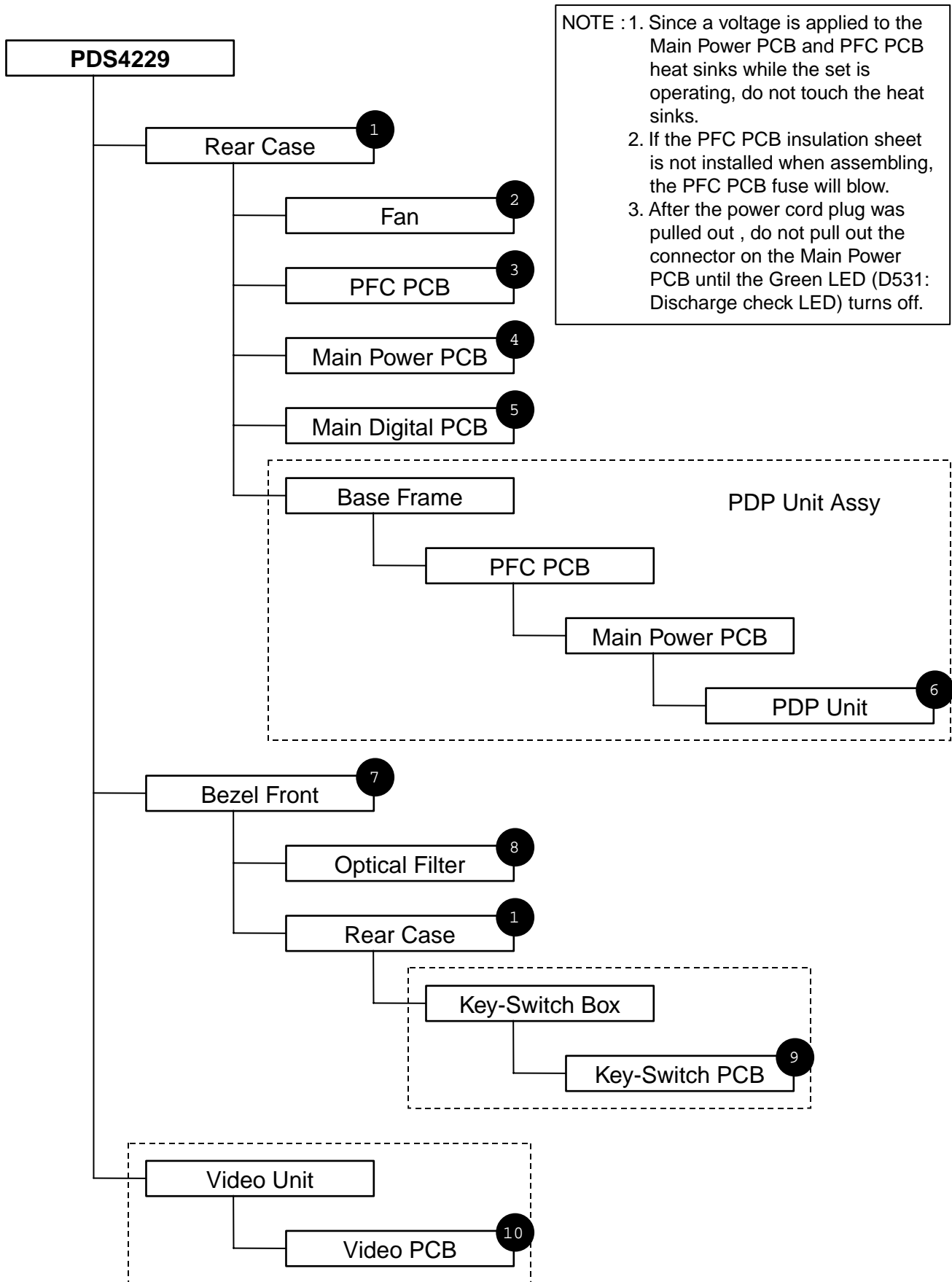


For an angle of 5° to 15°, fasten only at the arm mounting screws B (2 places on both sides). Remove the lock fitting mounting screws D.

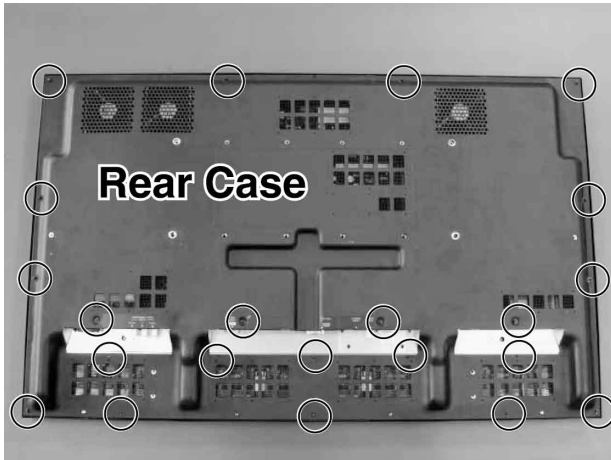
# DISASSEMBLY FLOWCHART



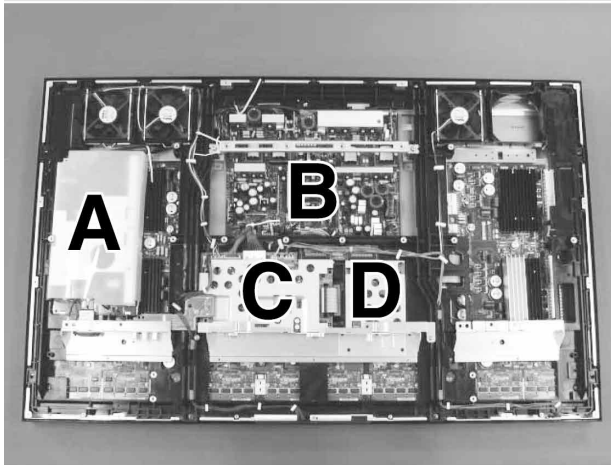
# DISASSEMBLY FLOWCHART



# 1.Removing the Rear Case

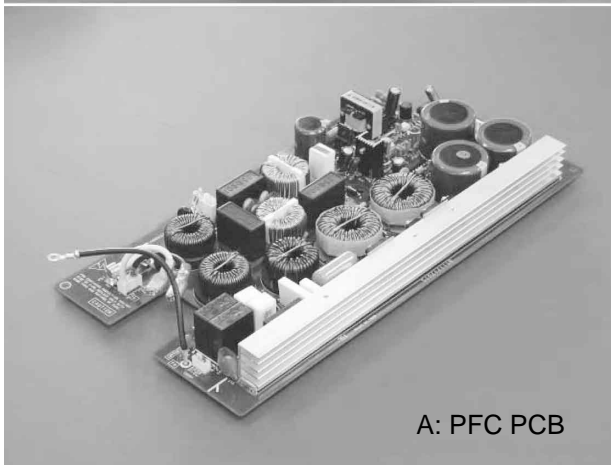


1. Remove the 22 circled screws and remove the Rear Case.

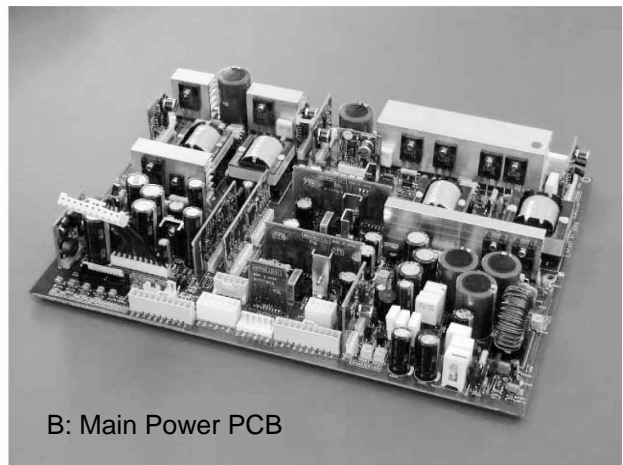


\*Layout of main PCB.

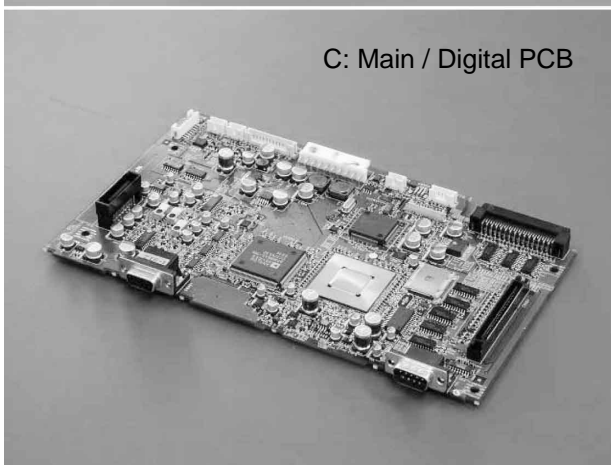
Note : If the PFC PCB insulation sheet is not installed when assembling, the PFC PCB fuse will blow.



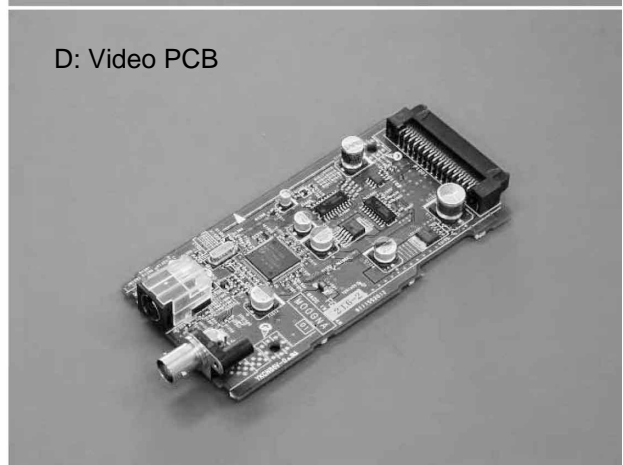
A: PFC PCB



B: Main Power PCB



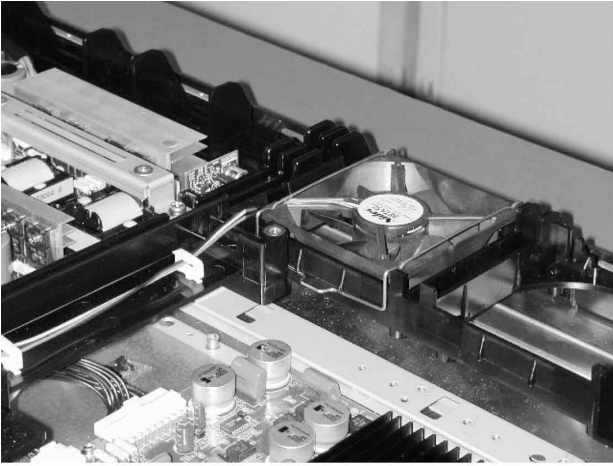
C: Main / Digital PCB



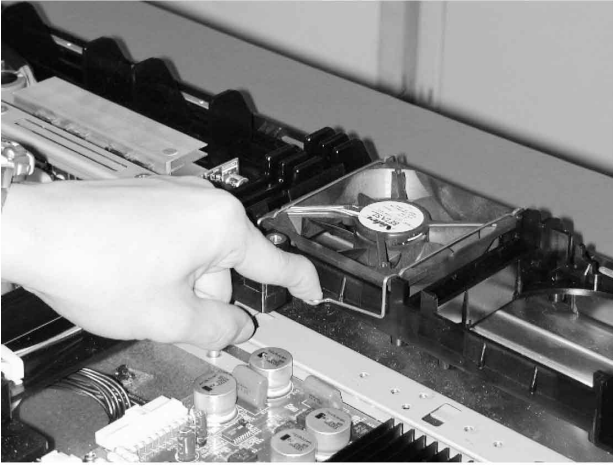
D: Video PCB

## 2.Removing the Fan

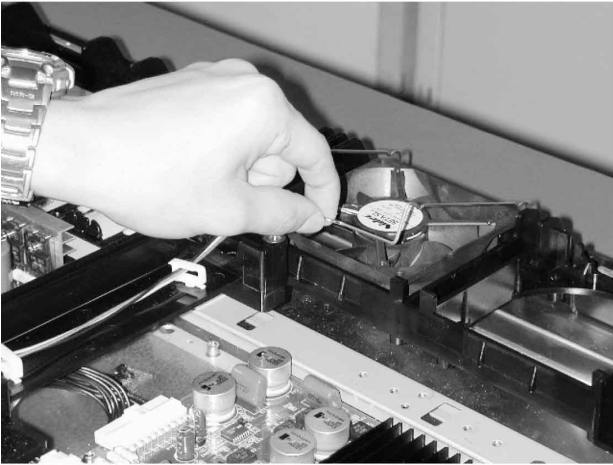
---



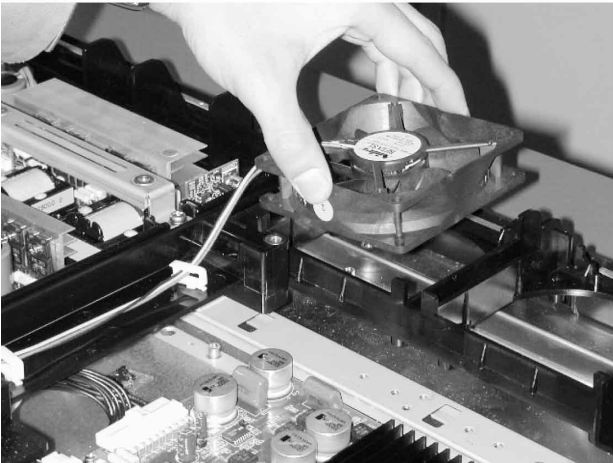
1. Remove the Rear Case.



2. Remove the hook holding the Fan.



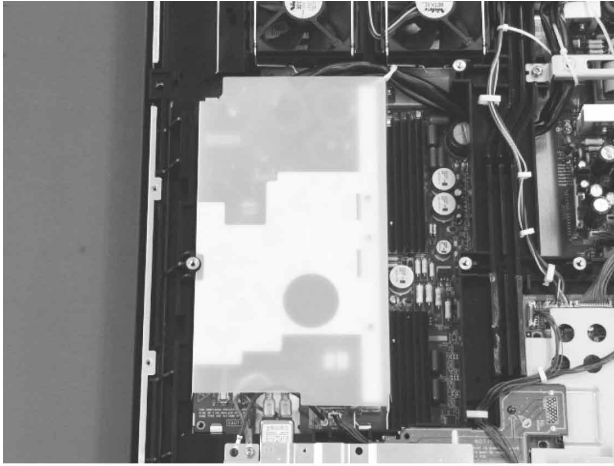
3. Remove the Holder Fan.



4. Remove the Fan and wire-connector.

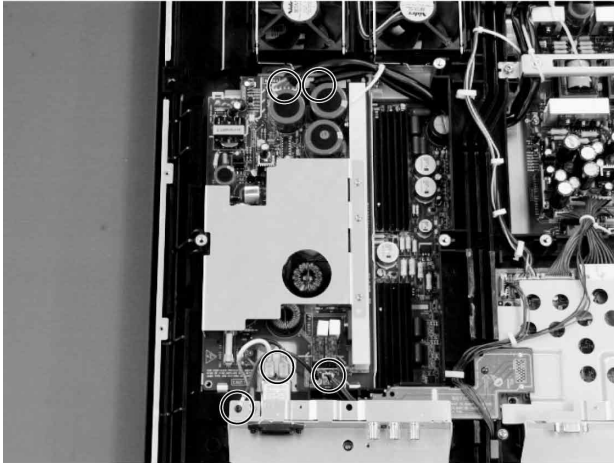
### 3.Removing the PFC PCB

---

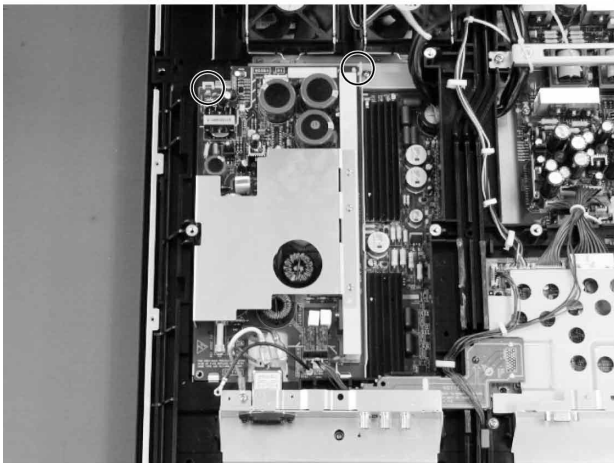


1. Remove the insulation sheet.

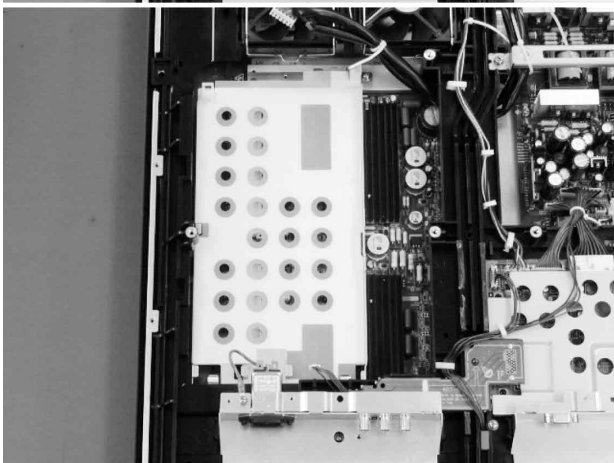
Note : If the PFC PCB insulation sheet is not installed when assembling, the PFC PCB fuse will blow.



2. Disconnect the connector and ground wire connected to the PCB.

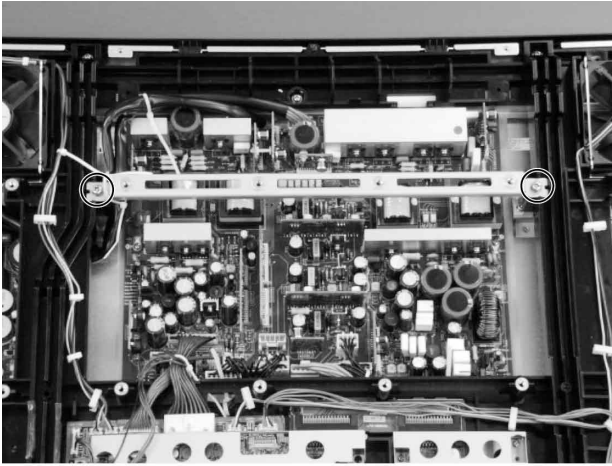


3. Remove the two hooks holding the PCB and remove the PCB.

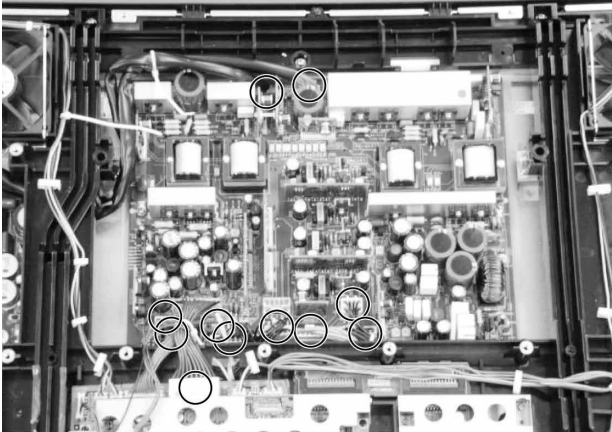


\* View after PFC PCB removed.

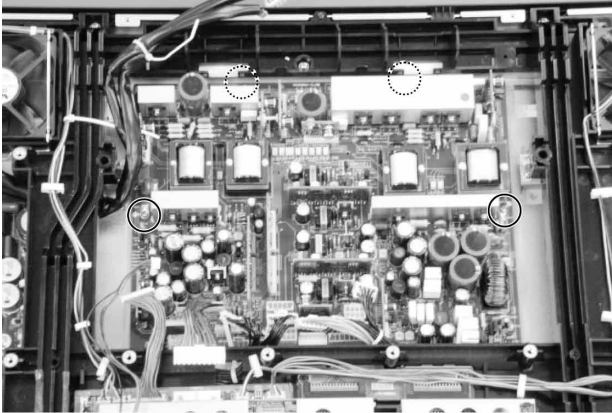
## 4.Removing the Main Power PCB



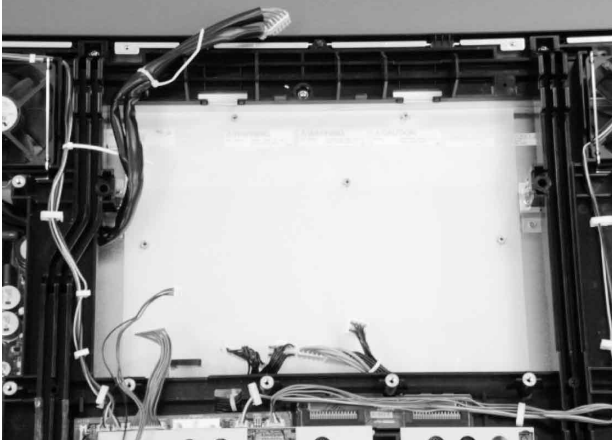
1. Remove the Rear Case.
2. Remove 2 circled screws and remove the Option Frame.



3. Remove the circled connector.



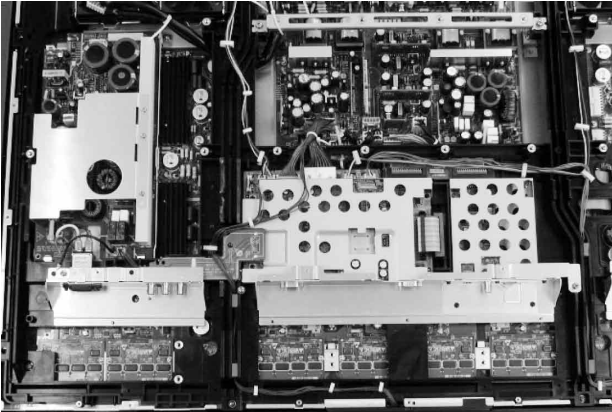
4. Remove the 4 screws and the Main Power PCB.



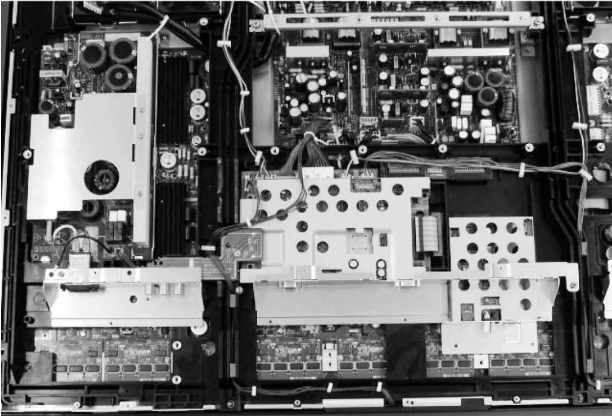
\* View after Main Power PCB removed.

## 5.Removing the Main/Digital PCB (1 of 2)

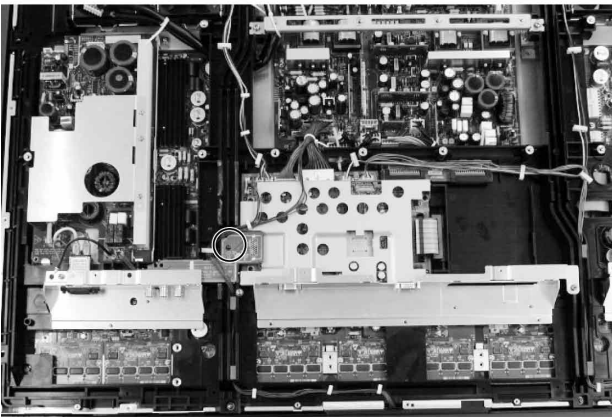
---



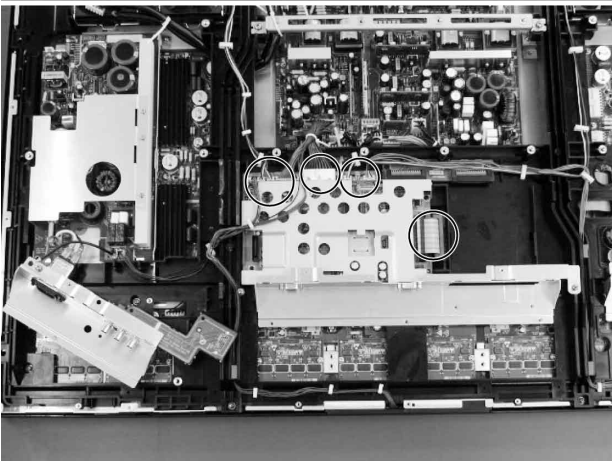
1. Remove the Rear Case.



2. Remove the Video Unit.



3. Remove the circled screw and remove the Interface PCB from the Main/Digital PCB.  
(Disconnect CN2004)

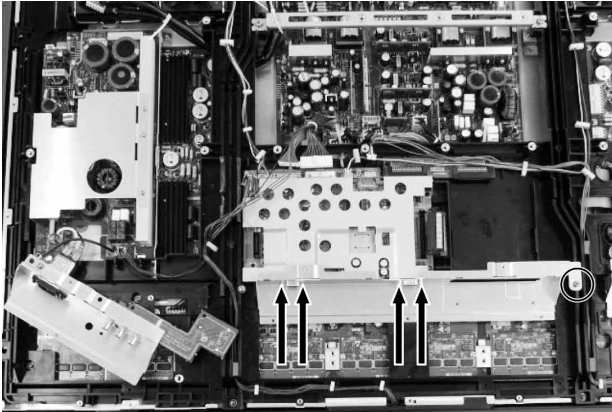


4. Disconnect the connectors on the Main/Digital PCB.  
(CN351,CN352,CN751,CN752,  
CN951, CN953,CN954 AND CN201)

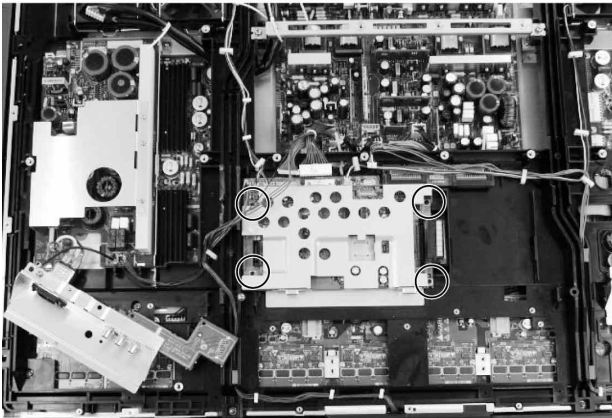


## 5.Removing the Main/Digital PCB (2 of 2)

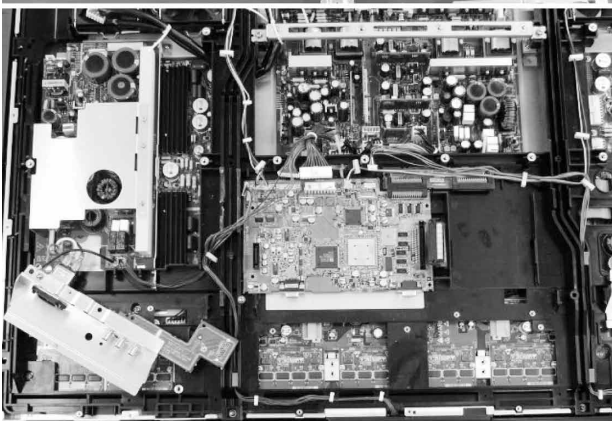
---



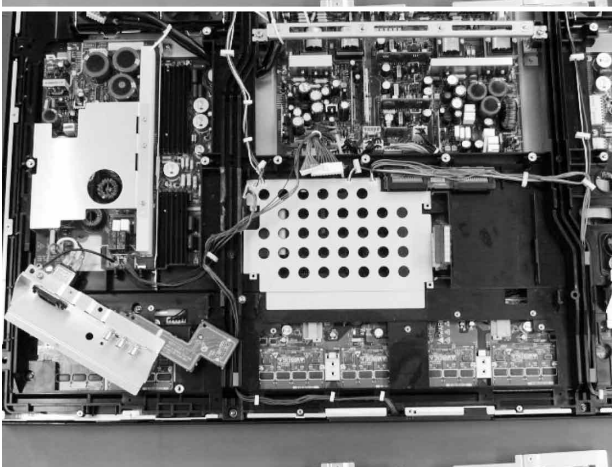
5. Remove the Rear Panel.  
(4 Hex-screws and 1 screw)



6. Remove the 4 screws at the shield bracket of the Main/Digital PCB, and remove the shield bracket.

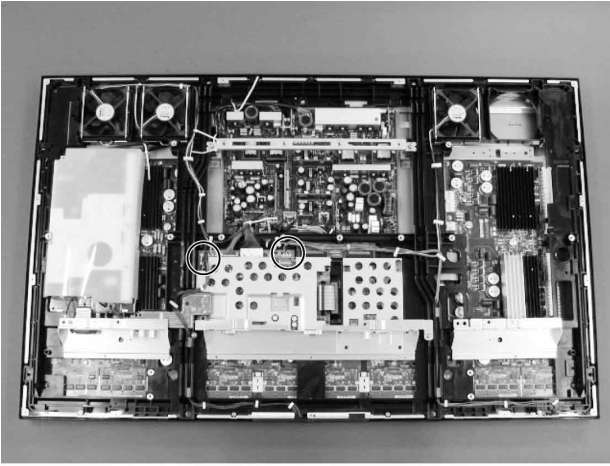


7. Remove the Main/Digital PCB.

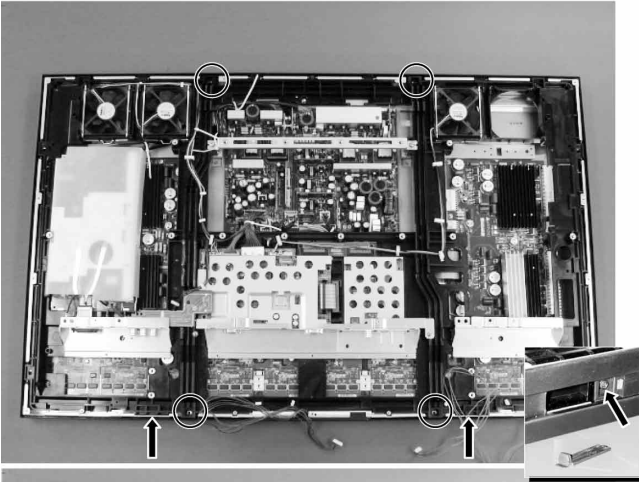


\* View after Main/Digital PCB removed.

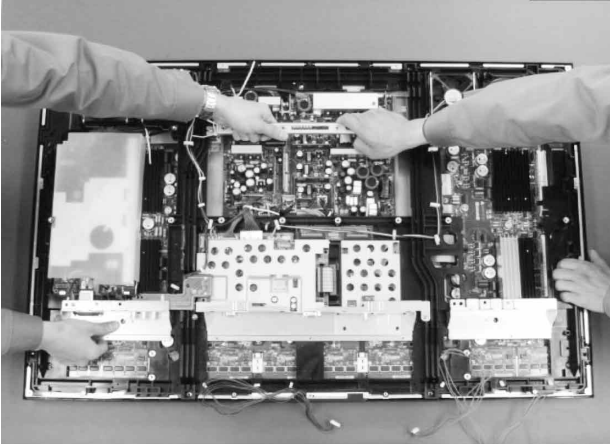
## 6.Removing the PDP Unit (1 of 3)



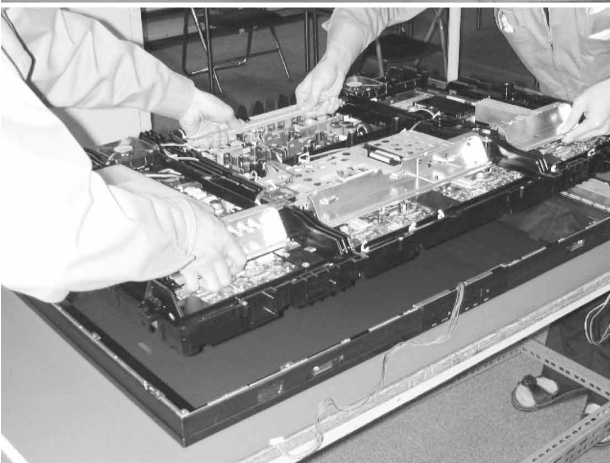
1. Remove the Rear Case.
2. Disconnect the circled connectors CN751 and CN742 and remove their wires to the outside of the Main Unit.



3. Remove the 6 circled screws.  
(Two screws indicated by the arrows are inside stand cover.)



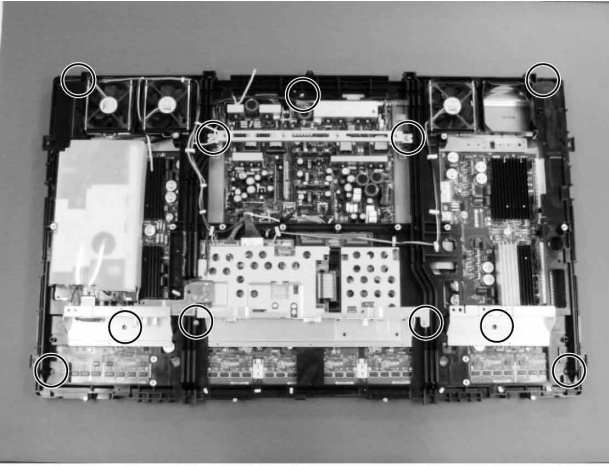
4. Remove the Base Frame from the Front Case together with a panel and PCBs.



\* View of removal of the Base Frame from the Front Case.

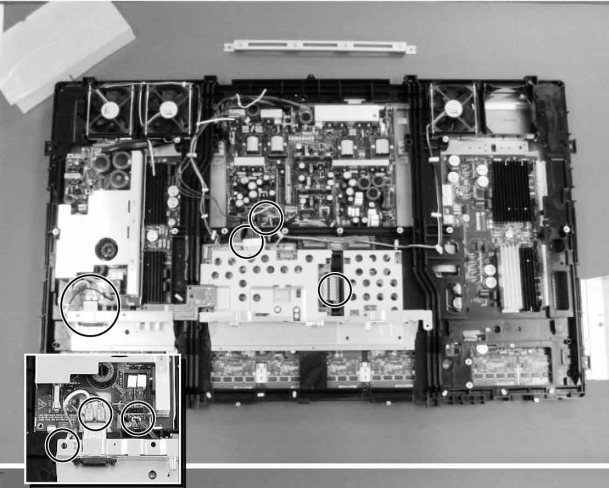
## 6.Removing the PDP Unit (2 of 3)

---



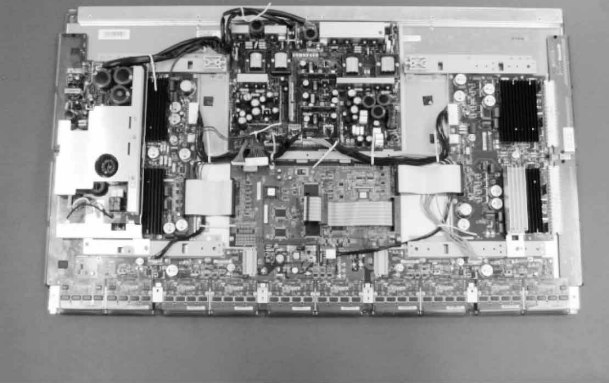
\* View after the Front Case, Panel Unit and PCBs removed.

5. Remove the insulation sheet and the 11 circled screws.



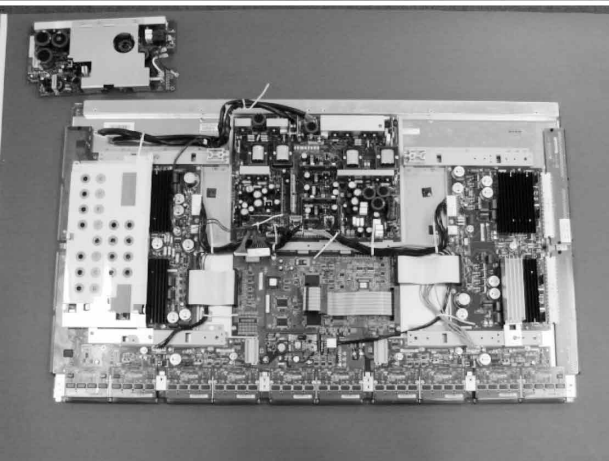
6. Disconnect connectors CN201, CN351, CN352, CN501 and AC Inlet 3 pins.

7. Remove the Base Frame together with the other parts.



8. Remove the PFC PCB.

\* Refer to "Removing the PFC PCB" on page 32.

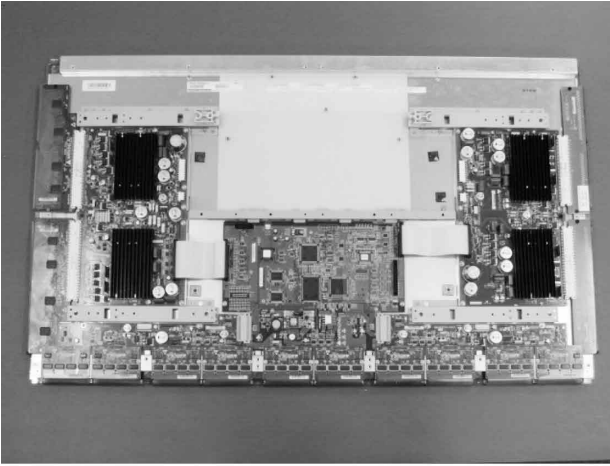


9. Remove the shield plate under the PFC PCB and Main Power PCB.

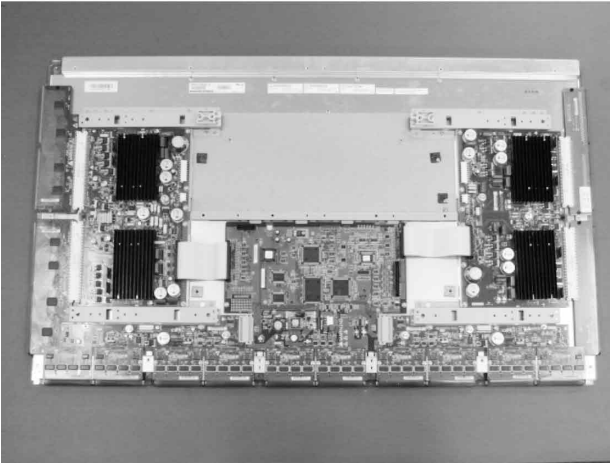
\* Refer to "Removing the Main Power PCB" on page 33.

## 6.Removing the PDP Unit (3 of 3)

---



10. Remove the insulation sheet under the Main Power PCB and each connector.



- \* View after only the PDP Unit removed.
- \* Replace the parts which are already mounted correctly, when the PDP Unit is replaced.

## 7. Removing the Bezel Front

---



1. Remove the 2 circled Cover Stands and remove the screw in the holes.



2. Lift the bottom of the Bezel Front.



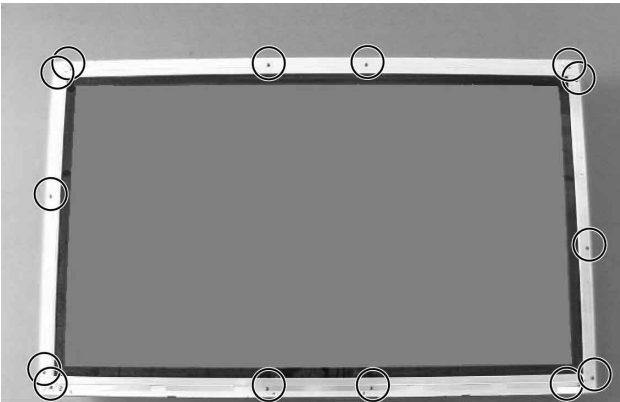
3. Lift the Bezel Front upward to remove it.  
(The top of the Bezel Front is hooked.)



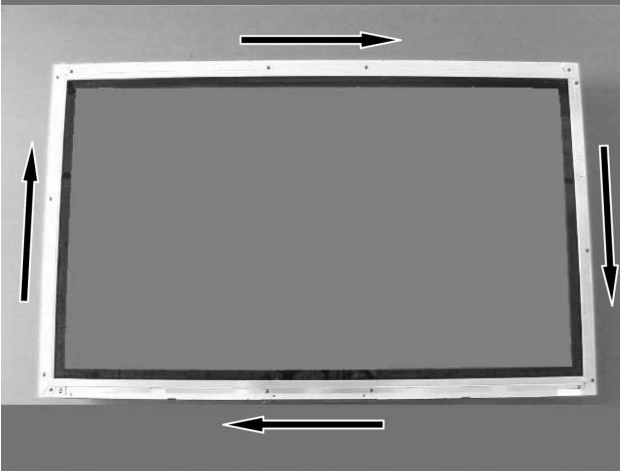
\* View after Bezel Front removed.

## 8. Removing the Optical Filter

---



1. Remove the Bezel Front.
2. Remove the 14 screws on the Filter Holders at each side.



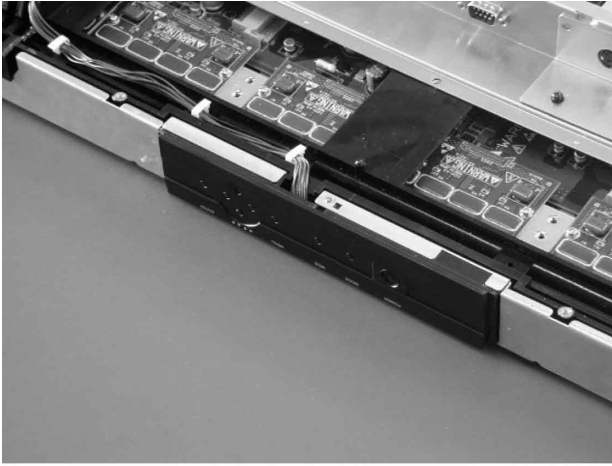
3. Remove by sliding the Filter Holder in the arrow directions.



4. Remove the Optical Filter.

## 9.Removing the Key Switch PCB

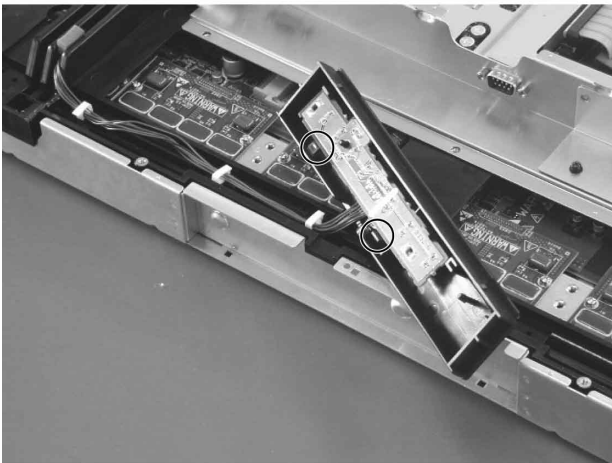
---



1. Remove the Bezel Front.
2. Remove the rear case.



3. Remove by tilting the key switch part forward.

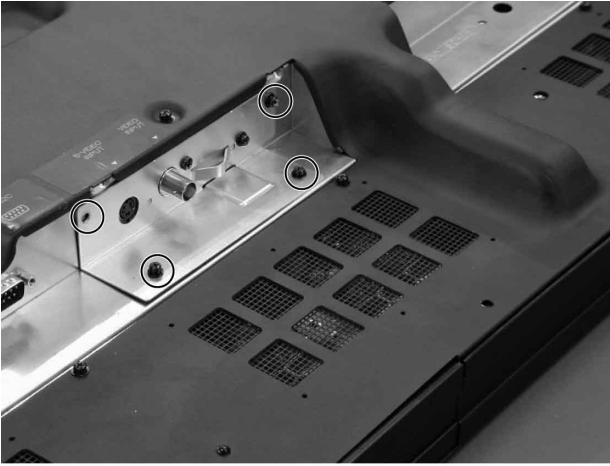


4. Unhook the hook holding the key switch PCB.



5. Remove the key switch PCB.

## 10. Removing the Video PCB

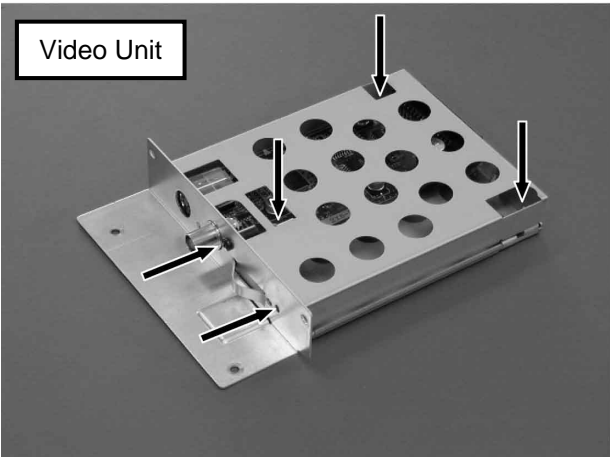


\* The Video PCB can be removed without moving the Rear Case.

1. Remove the 4 circled screws.



2. Pull out the Video PCB Unit from the plasmavision.

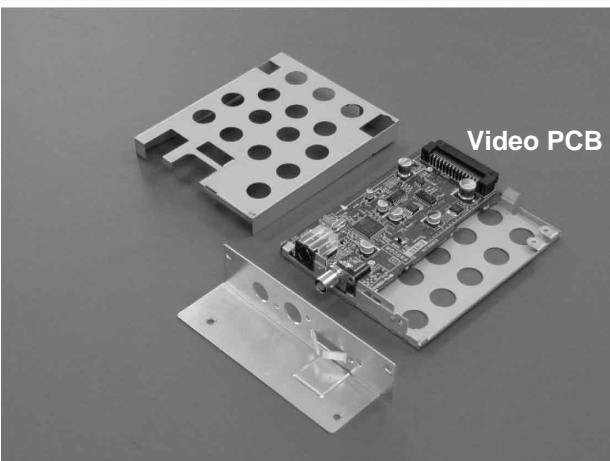


3. Remove the 5 screws from the Video PCB Unit.

Note :

Three kinds of screws are used on this Video Unit.

Be careful not to make any mistakes when reinstalling.



4. Remove the Video PCB.



# PARTS LIST

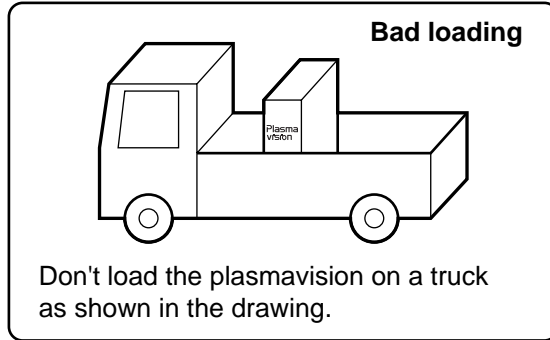
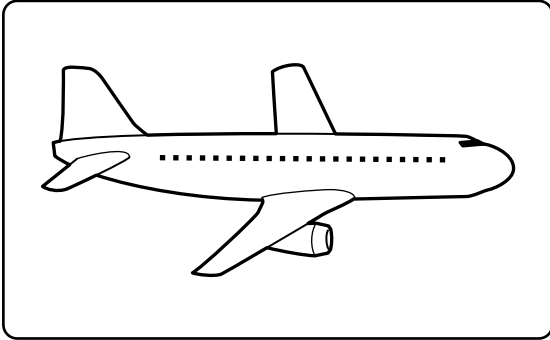
Ref. No.	Description	PDS4229W-B	PDS4229E-B
<b>Cabinet</b>			
	Rear Case	8106680003	←
	Front case	8111430006	←
	Base Frame	8111422001	←
	Bezel Front	8111676008	←
	Cover Stand	8110704009	←
	Holder Key-switch	8111796003	←
	Holder Filter (T/B)	8109903000	←
	Holder Filter (L/R)	8109904007	←
<b>Electric</b>			
	Video PCB Assy M00GNA	8111588004	←
	Main/Digital PCB Assy M00GM	8111581005	←
	Main Power PCB Assy M00BV	8111946002	←
	PFC PCB Assy M00BX	8111640009	←
	Key Switch PCB Assy M00GNC	8111592001	←
	Interface PCB Assy M00GND	8111594005	←
	LED/PHOTO PCB ASSY M00GNE	8111596009	←
	Temperature sensor IC757	0100055016	←
	Connection PCB M00GNB	8111590007	←
	PDP Unit, FPF42C10660UE-41	8110753007	←
	Optical Filter	8111500013	←
	Fan Motor	8900233009	←
	Noise Filter	0400222170	←
	Power Cord VDE	—	8111726000
	UL/CSA	8111725003	—
	Remote Control Unit	8108442005	←
<b>Packing</b>			
	Packing Pad-Top (2 pcs.)	8111629004	←
	Packing Pad-BTM (2 pcs.)	8111630000	←
	Carton box-Top	8111420007	←
	Carton box-Bottom	8108658000	←
	Packing Joint-D	8108655009	←

\* When ordering the Main/Digital PCB Assy, always enter the Model No.

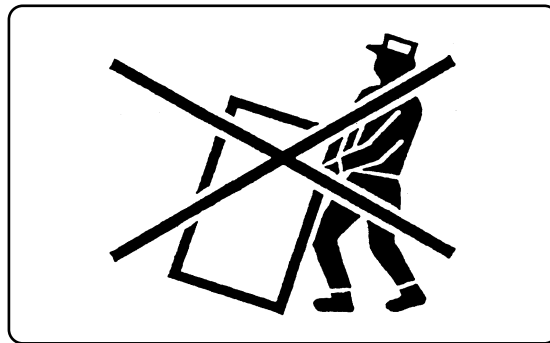
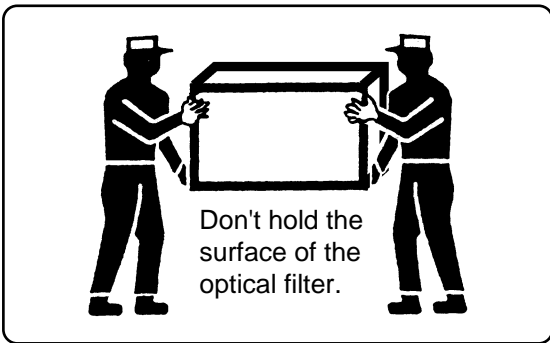
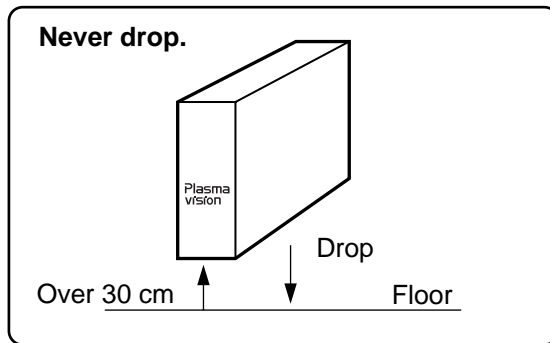
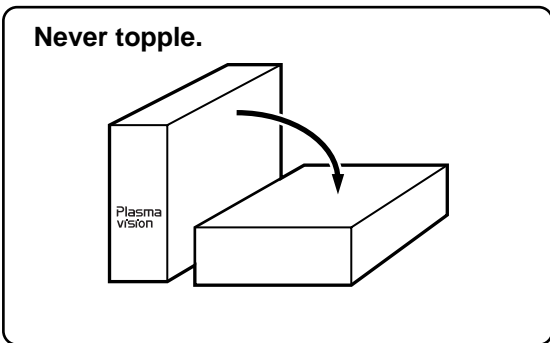
← : Same as left

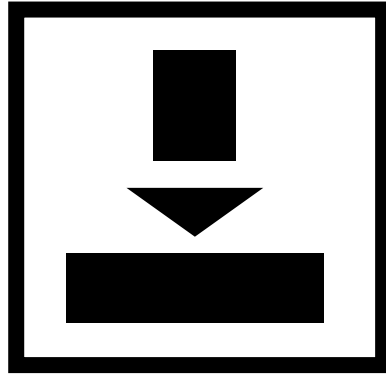
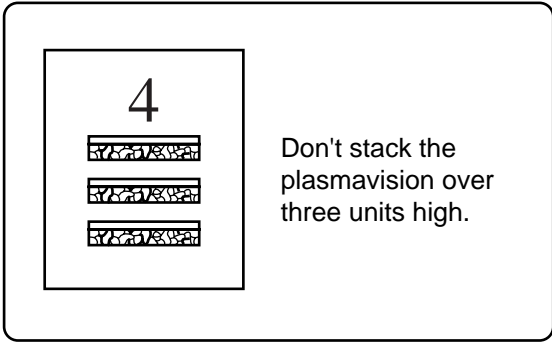
# TRANSPORTATION AND HANDLING RESTRICTIONS

## Transportation



## Handling





### Example of good transportation and handling

