



N-Channel Enhancement Mode Power MOSFET

**Description**

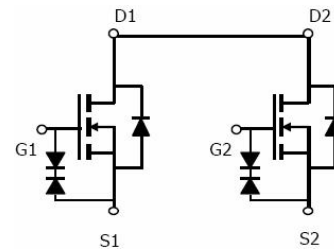
The PED2311DN uses advanced trench technology to provide excellent  $R_{DS(ON)}$  and low gate charge. It can be used in a wide variety of applications. It is ESD protected.

**General Features**

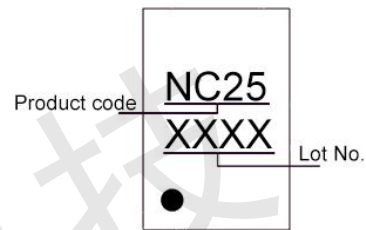
- $V_{DS} = 18V, I_D = 12A$   
 $R_{DS(ON)} < 7.5m\Omega @ V_{GS}=4.5V$   
 $R_{DS(ON)} < 8.6m\Omega @ V_{GS}=3.8V$   
 $R_{DS(ON)} < 10m\Omega @ V_{GS}=3.1V$   
 $R_{DS(ON)} < 11m\Omega @ V_{GS}=2.5V$   
ESD Rating: 4000V HBM
- High Power and current handing capability
- Lead free product is acquired
- Surface Mount Package

**Application**

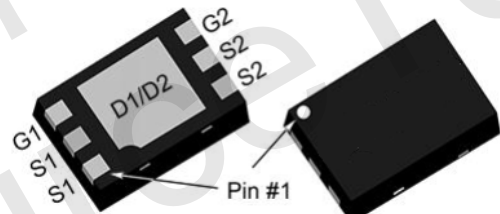
- PWM applications
- Load switch
- Power management



Schematic diagram



Marking



DFN2x3-6L

**Absolute Maximum Ratings (TA=25°C unless otherwise noted)**

Parameter	Symbol	Rating	Unit
Drain-Source Voltage	$V_{DS}$	18	V
Gate-Source Voltage	$V_{GS}$	$\pm 12$	V
Drain Current-Continuous	$I_D$	12	A
Pulsed Drain Current (Note 1)	$I_{DM}$	70	A
Maximum Power Dissipation	$P_D$	1.5	W
Operating Junction and Storage Temperature Range	$T_J, T_{STG}$	-55 To 150	°C

**Thermal Characteristic**

Thermal Resistance, Junction-to-Ambient (Note 2)	$R_{\theta JA}$	83	°C/W
--	-----------------	----	------



**Electrical Characteristics (TA=25°C unless otherwise noted)**

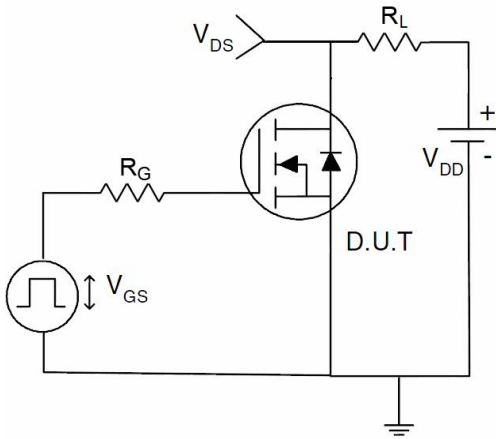
Parameter	Symbol	Condition	Min	Typ	Max	Unit
<b>Off Characteristics</b>						
Drain-Source Breakdown Voltage	$BV_{DSS}$	$V_{GS}=0V, I_D=250\mu A$	-	18	-	V
Zero Gate Voltage Drain Current	$I_{DSS}$	$V_{DS}=16V, V_{GS}=0V$	-	-	1	$\mu A$
Gate-Body Leakage Current	$I_{GSS}$	$V_{GS}=\pm 10V, V_{DS}=0V$	-	-	$\pm 10$	$\mu A$
<b>On Characteristics (Note 3)</b>						
Gate Threshold Voltage	$V_{GS(th)}$	$V_{DS}=V_{GS}, I_D=250\mu A$	0.45	0.7	1.0	V
Drain-Source On-State Resistance	$R_{DS(on)}$	$V_{GS}=4.5V, I_D=5.5A$	5.2	6.0	7.5	m $\Omega$
		$V_{GS}=3.8V, I_D=5.5A$	5.6	6.8	8.6	m $\Omega$
		$V_{GS}=3.1V, I_D=5A$	6.0	7.5	10	m $\Omega$
		$V_{GS}=2.5V, I_D=5A$	7.0	9.0	11	m $\Omega$
Forward Transconductance	$g_{FS}$	$V_{DS}=5V, I_D=5A$	15	-	-	S
<b>Dynamic Characteristics (Note 4)</b>						
Input Capacitance	$C_{iss}$	$V_{DS}=10V, V_{GS}=0V,$ $F=1.0MHz$	-	1300	-	pF
Output Capacitance	$C_{oss}$		-	310	-	pF
Reverse Transfer Capacitance (Note 4)	$C_{rss}$		-	295	-	pF
Gate Resistance	$R_g$	$V_{DS}=0V, V_{GS}=0V, F=1.0MHz$	-	1	-	K $\Omega$
<b>Switching Characteristics</b>						
Turn-on Delay Time	$t_{d(on)}$	$V_{DD}=10V, I_D=2A, R_L=1\Omega,$ $V_{GS}=4.5V, R_G=3\Omega$	-	10.2	-	nS
Turn-on Rise Time	$t_r$		-	41	-	nS
Turn-Off Delay Time	$t_{d(off)}$		-	67	-	nS
Turn-Off Fall Time	$t_f$		-	31	-	nS
Total Gate Charge	$Q_g$	$V_{DS}=10V, I_D=5A,$ $V_{GS}=4.5V$	-	18	-	nC
Gate-Source Charge	$Q_{gs}$		-	2.8	-	nC
Gate-Drain Charge	$Q_{gd}$		-	8.5	-	nC
<b>Drain-Source Diode Characteristics</b>						
Diode Forward Voltage (Note 3)	$V_{SD}$	$V_{GS}=0V, I_S=1A$	-	-	1.2	V
Diode Forward Current (Note 2)	$I_S$		-	-	7	A

**Notes:**

1. Repetitive Rating: Pulse width limited by maximum junction temperature.
2. Surface Mounted on FR4 Board,  $t \leq 10$  sec.
3. Pulse Test: Pulse Width  $\leq 300\mu s$ , Duty Cycle  $\leq 2\%$ .
4. Guaranteed by design, not subject to product.



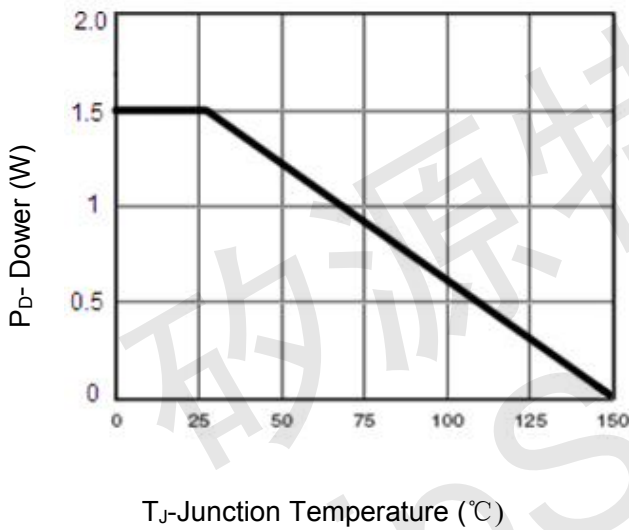
**Typical Electrical and Thermal Characteristics**



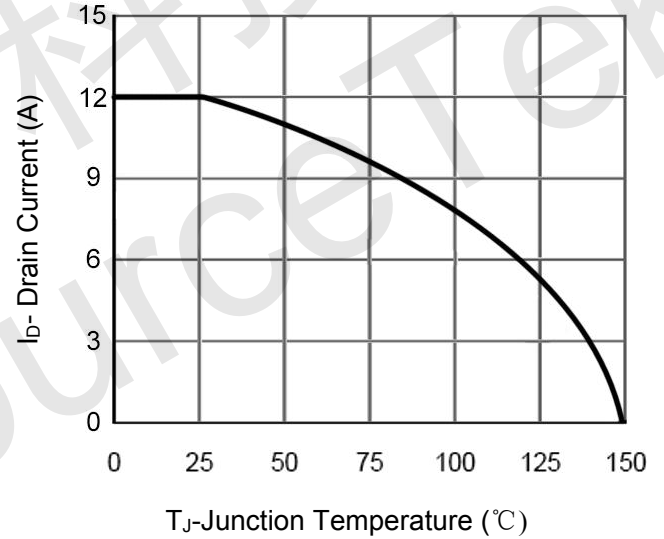
**Figure 1 Switching Test Circuit**



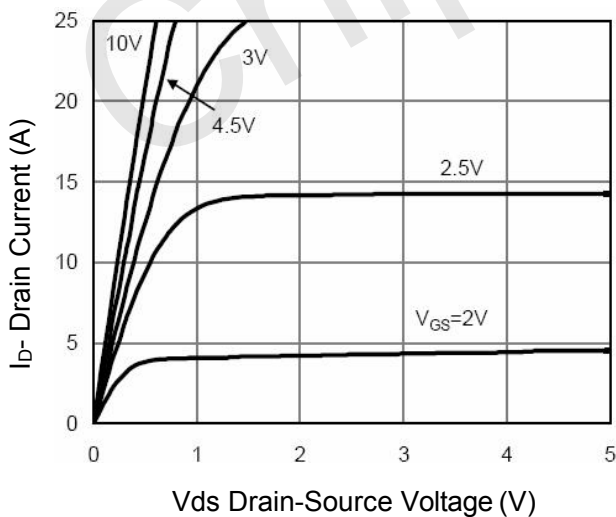
**Figure 2 Switching Waveform**



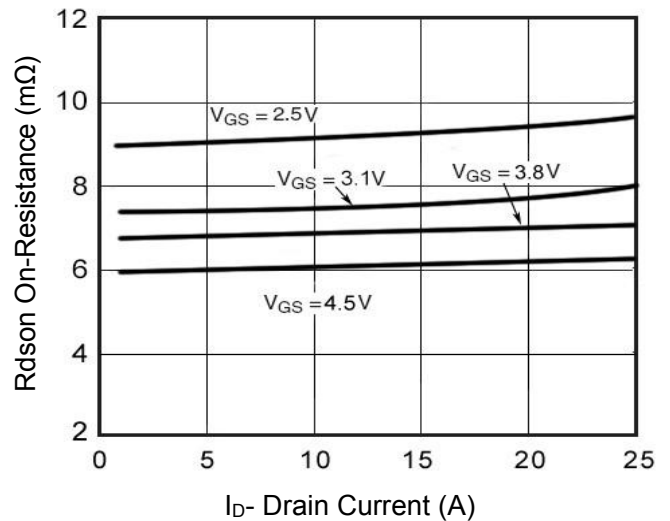
**Figure 3 Power Dissipation**



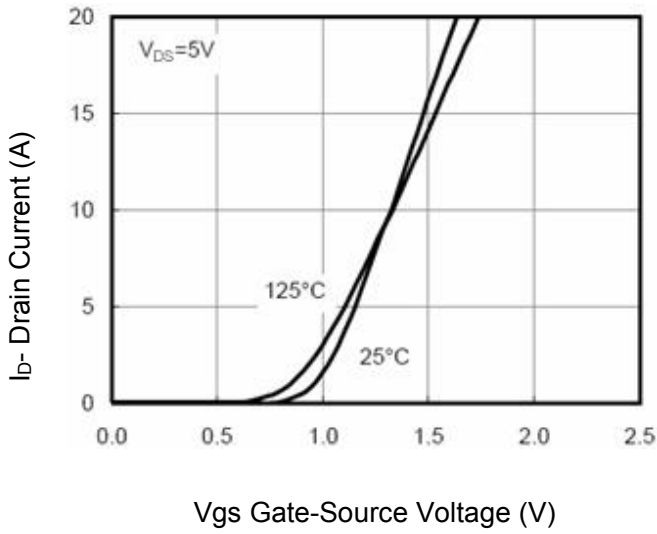
**Figure 4 Drain Current**



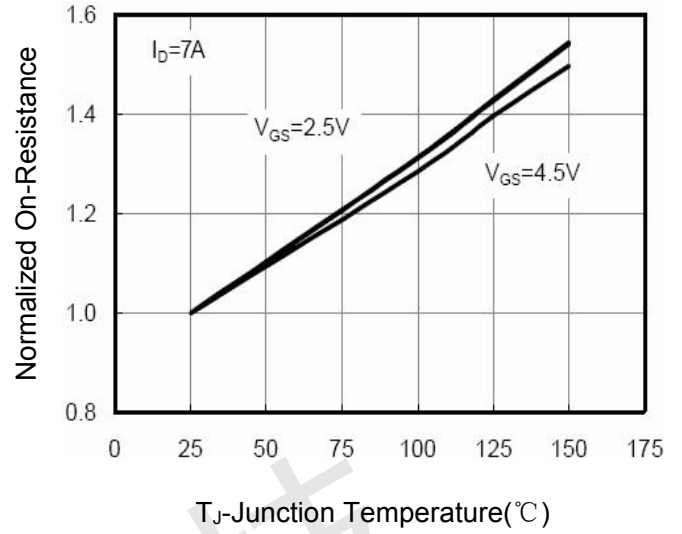
**Figure 5 Output Characteristics**



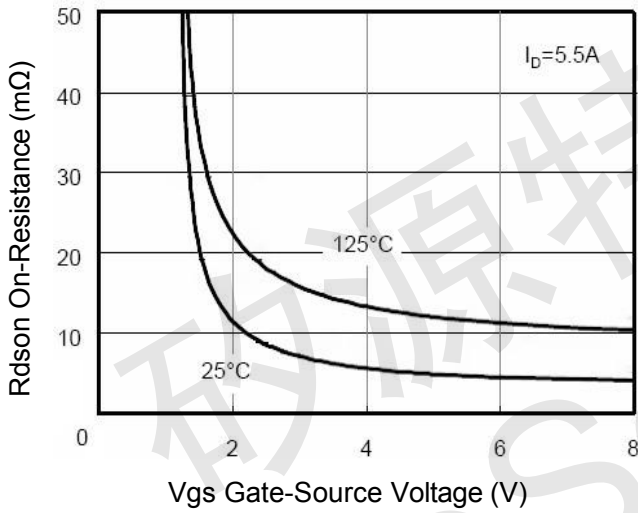
**Figure 6 R<sub>dson</sub> vs Drain Current**



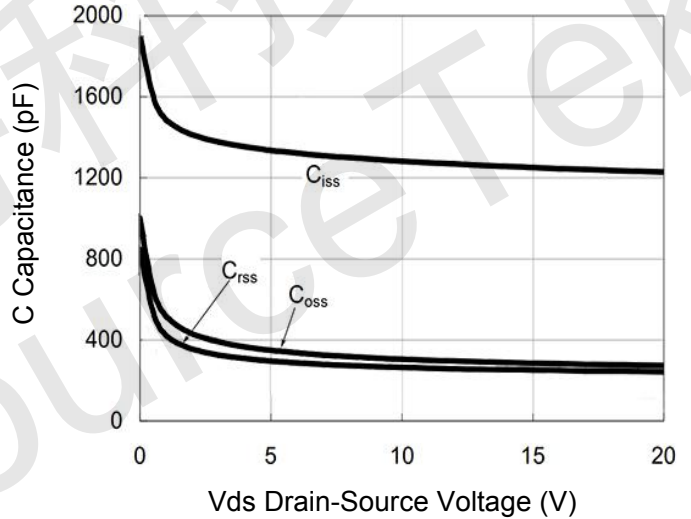
**Figure 7 Transfer Characteristics**



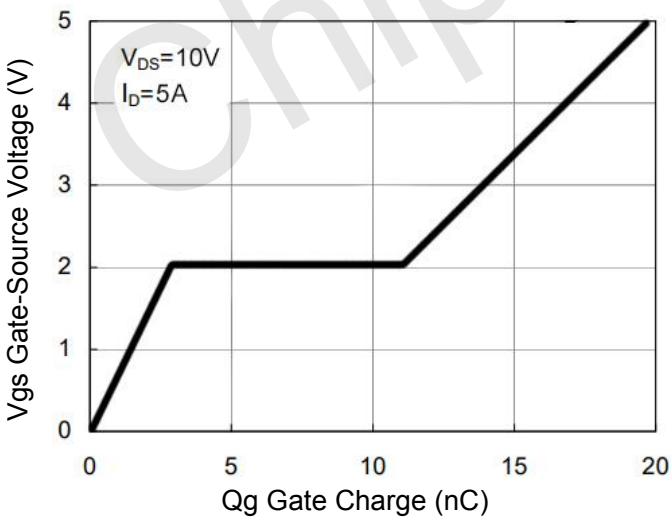
**Figure 8 Rdson vs Junction Temperature**



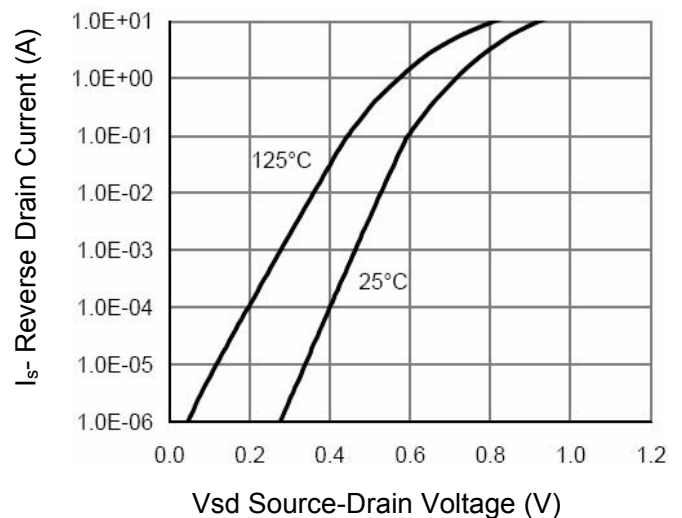
**Figure 9 Rdson vs Vgs**



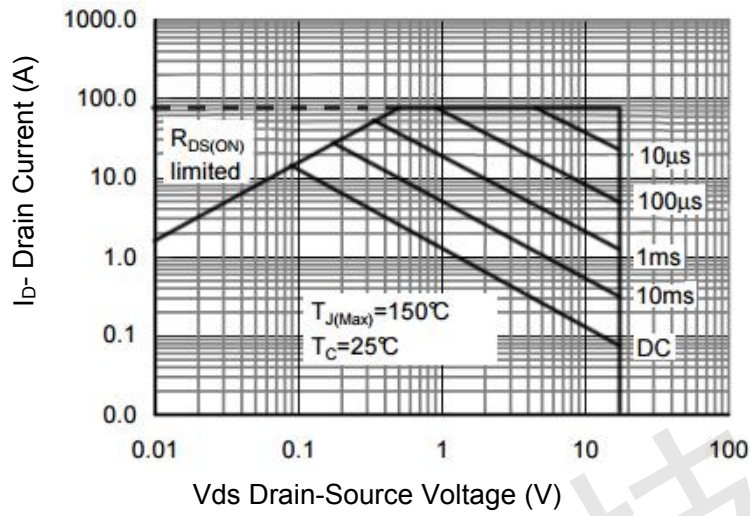
**Figure 10 Capacitance vs Vds**



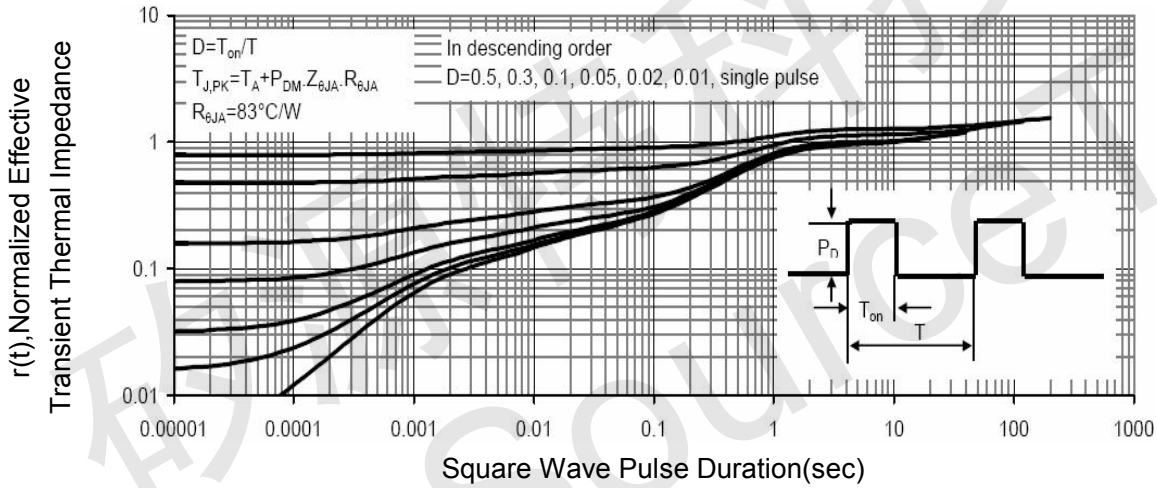
**Figure 11 Gate Charge**



**Figure 12 Source- Drain Diode Forward**



**Figure 13 Safe Operation Area**

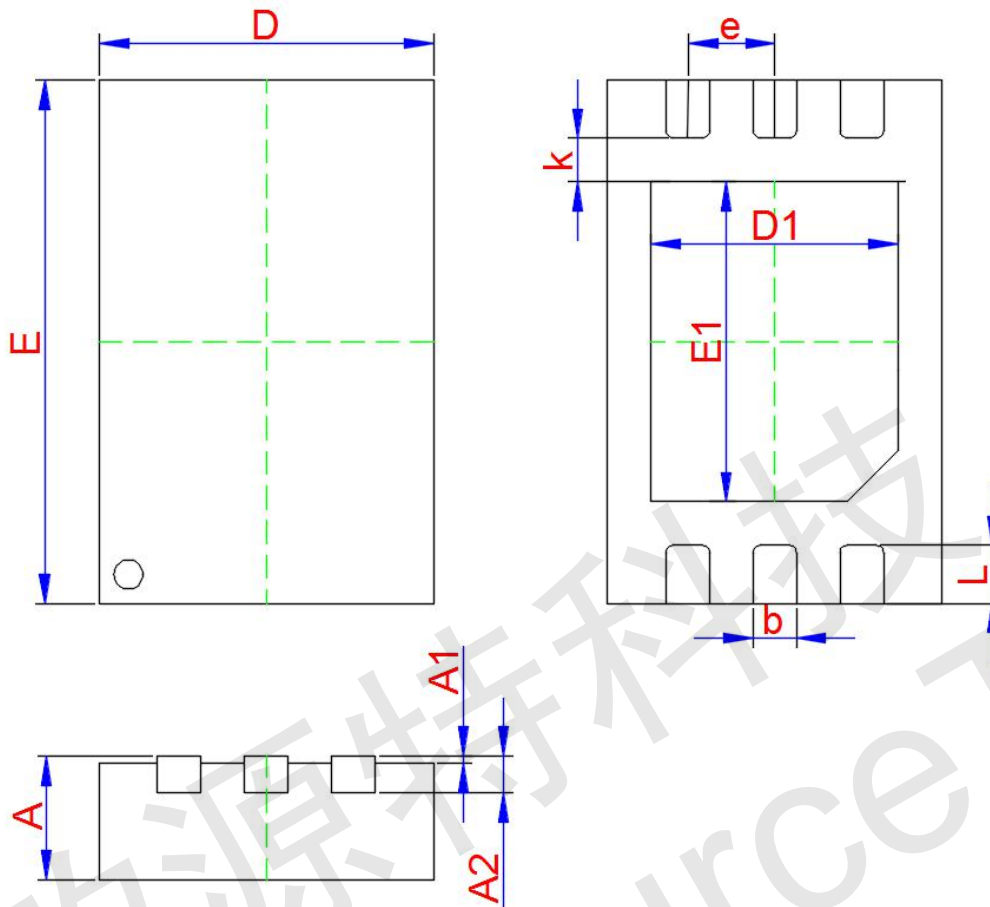


**Figure 14 Normalized Maximum Transient Thermal Impedance**





**DFN2x3-6L Package Information**



Symbol	Dimensions In Millimeters		
	Min.	Typ.	Max.
A	0.700	0.750	0.800
A1	0.000	0.020	0.050
A2	0.203 TYP.		
D	1.950	2.000	2.050
E	2.950	3.000	3.050
D1	1.450	1.500	1.550
E1	1.650	1.700	1.750
k	0.200 MIN.		
b	0.200	0.250	0.300
e	0.500 TYP.		
L	0.300	0.350	0.400