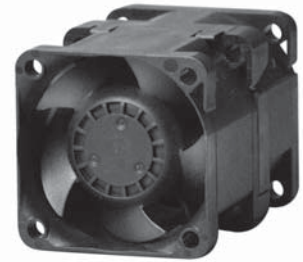


40x40x56 mm

26.9~31.7 CFM



■ Specifications

Model	Bearing	Rating Voltage	Power Current	Power Consumption	Speed in / out	Air Flow	Static Pressure	Noise	Weight	Curve
	2BALL Sleeve	(VDC)	(mA)	(WATTS)	(RPM)	(CFM)	(Inch-H ₂ O)	(dB(A))	(g)	
PF40561BX-000U-A99	☉	12	1390	16.68	21500/18000	31.7	3.60	65.9	87.0	1
PF40561B1-000U-A99	☉	12	890	10.68	18000/15000	26.9	2.56	62.3	87.0	2

■ Function

PF40561BX / 1

A99: AutoRestart

F99: AutoRestart and R type

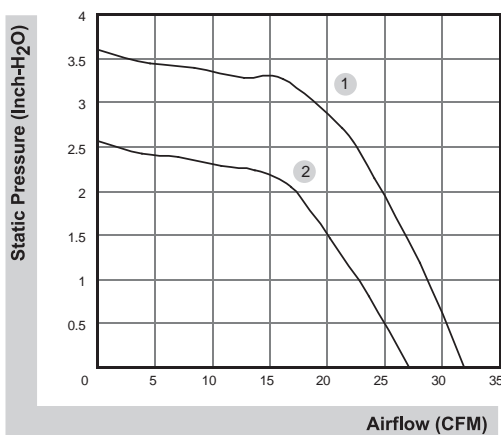
G99: AutoRestart and F type

H99: AutoRestart and PWM

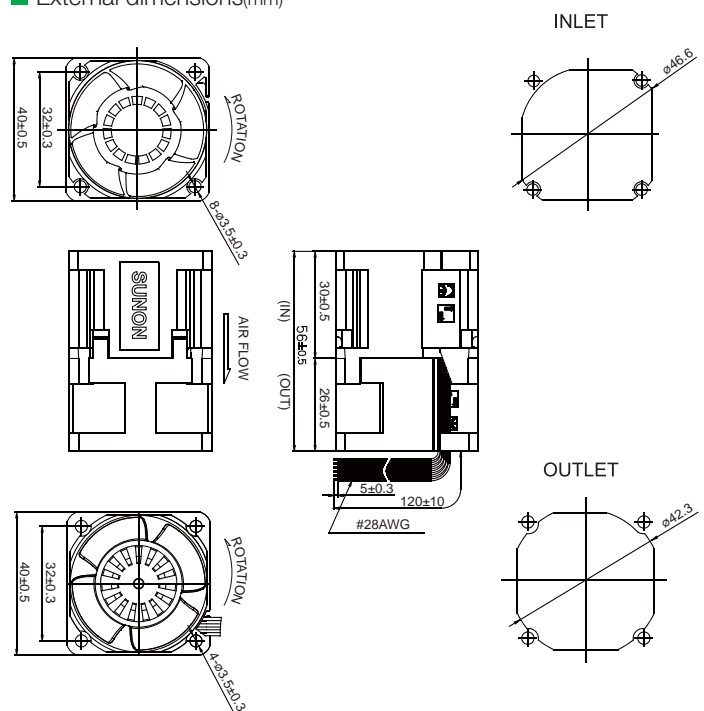
Q99: AutoRestart , R type and PWM

S99: AutoRestart , F type and PWM

■ Air Flow-Static Pressure Characteristics



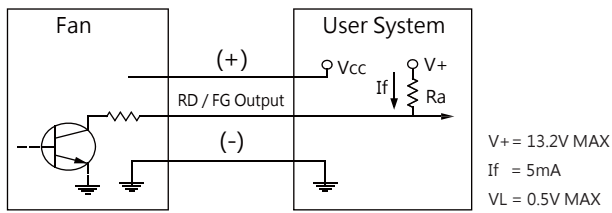
■ External dimensions(mm)



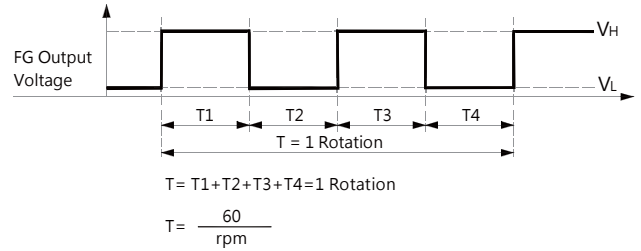
*All model could be customized. Please contact with Sunon Sales.

*Specifications are subject to change without notice. Please Visit SUNON website at www.sunon.com for update information.

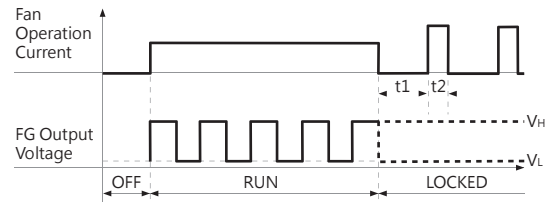
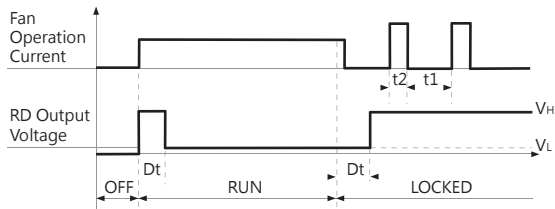
■ FG Signal



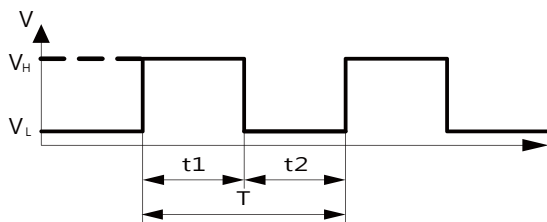
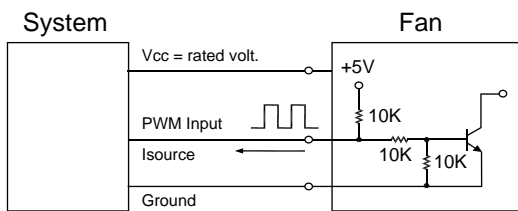
[FG Signal]



[RD Signal]



■ PWM Input Signal



1. Period : $T = \frac{1}{f_{\text{PWM}}} = t1 + t2(\text{sec})$

2. Duty Cycle (D.C.) : $\frac{t1}{t1+t2} * 100 = \frac{t1}{T} * 100(\%)$

VH=2.3~5.5V

VL=0~0.8V

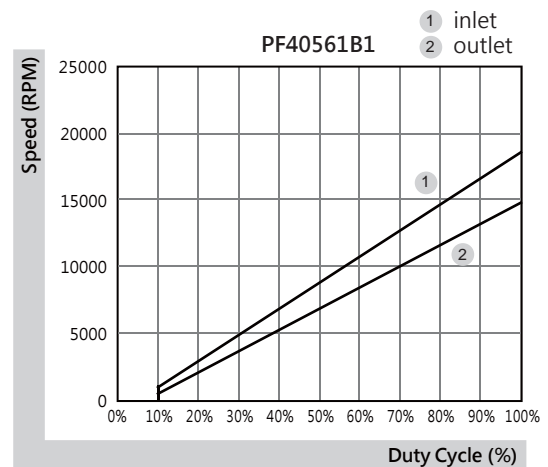
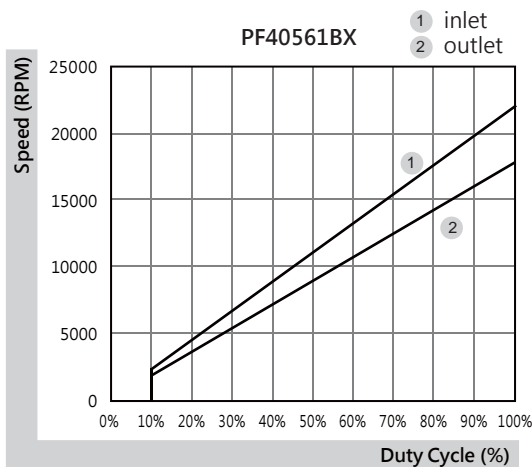
PWM FREQUENCY: 25KHZ

Isource=0.5mA at PWM Input Voltage 0V

The speed is default to be maximum if PWM input pin is unconnected.

Min. start up duty cycle is 10%.

■ PWM Curve



*All model could be customized. Please contact with Sunon Sales.

*Specifications are subject to change without notice. Please Visit SUNON website at www.sunon.com for update information.