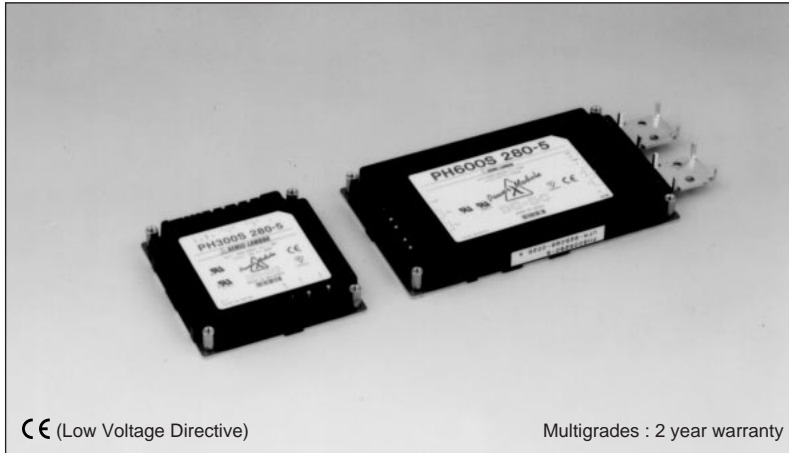


# PH300S/PH600S-SERIES

Single output 300W ~ 600W  
DC-DC power module

**LAMBDA**  
DENSEI-LAMBDA



CE (Low Voltage Directive)

Multigrades : 2 year warranty

## Model name




# PH 600 S 280-5

Output power      Nominal input voltage  
Name of series      Function      Nominal output voltage  
S: Simple function

## Features

- CE marking (Low Voltage Directive)
- Compact DC-DC power module  
Large power 300W/600W  
High power density: 61.6W/inch<sup>3</sup> (600W type)  
600W type: 146 × 86 × 12.7mm  
300W type: 83 × 86 × 12.7mm
- Wide baseplate temperature: -20 ~ +100°C  
Conduction cooling
- Wide input voltage range  
DC48V input: DC36 ~ 76V, DC280V input: DC200 ~ 400V
- 2 year warranty

## Specifications

<b>1. Input voltage range</b>	PH300S48(300W type): DC36 ~ 76V PH300S280(300W type)/PH600S280(600W type): DC200 ~ 400V
<b>2. Output voltage range</b>	± 10% (12V ~ 28V types), -10 ~ +20% (3.3V, 5V and 48V types) (by TRM terminal and external resistor) Output voltage range is different according to input voltage.
<b>3. Line regulation</b>	0.4%, within nominal input voltage range at constant load (3.3V output: 20mV)
<b>4. Load regulation</b>	0.8%, no load to full load at constant input voltage (3.3V output: 40mV)
<b>5. Cooling</b>	Conduction cooling (Heatsink & airflow has to be chosen according to instruction manual)
<b>6. Operating ambient temperature</b>	Baseplate temperature: -20 ~ +100°C (Output derating is different according to condition) Ambient temperature: above -20°C
<b>7. Withstand voltage</b>	DC48V input/input to output: 1.5kVAC, Input to baseplate: 1.5kVAC for 1 min. DC280V input/input to output: 3.0kVAC, Input to baseplate: 2.5kVAC for 1 min.
<b>8. Safety standard</b>	Approved by UL1950  , CSA950(C-UL)  and EN60950  (BSI)
<b>9. Functions</b>	Over voltage protection (Can be reset by external signal), Over current protection, Thermal protection Remote sensing, Remote on/off control, Inverter good signal (IOG terminal) CS terminal (Load current balancing is possible with external control circuit under parallel operation)

## Product lineup

	Model name	Output voltage	Output current	Output power	UL	CSA	EN
PH300S48 (input 48VDC)	PH300S-48-3.3	3.3V	50A	165W	○	○	○
	PH300S-48-5	5V	50A	250W	○	○	○
	PH300S-48-12	12V	25A	300W	○	○	○
	PH300S-48-15	15V	20A	300W	○	○	○
	PH300S-48-24	24V	12.6A	302.4W	○	○	○
	PH300S-48-28	28V	10.8A	302.4W	○	○	○
	PH300S-48-48	48V	6.3A	302.4W	○	○	○
PH300S280 (input 280VDC)	PH300S-280-3.3	3.3V	50A	165W	○	○	○
	PH300S-280-5	5V	50A	250W	○	○	○
	PH300S-280-12	12V	25A	300W	○	○	○
	PH300S-280-15	15V	20A	300W	○	○	○
	PH300S-280-24	24V	12.5A	300W	○	○	○
	PH300S-280-28	28V	10.8A	302.4W	○	○	○
	PH300S-280-48	48V	6.3A	302.4W	○	○	○
PH600S280 (input 280VDC)	PH600S-280-3.3	3.3V	100A	330W	○	○	○
	PH600S-280-5	5V	100A	500W	○	○	○
	PH600S-280-12	12V	50A	600W	○	○	○
	PH600S-280-15	15V	40A	600W	○	○	○
	PH600S-280-24	24V	25A	600W	○	○	○
	PH600S-280-28	28V	21.5A	602W	○	○	○
	PH600S-280-48	48V	12.5A	600W	○	○	○

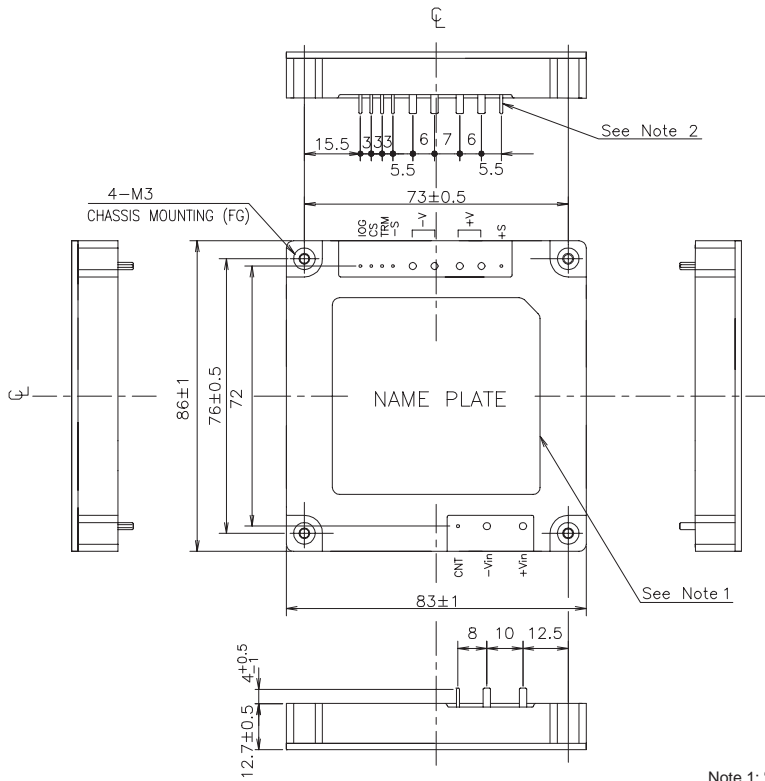
- Request customer specification for further details of specifications, outline, characteristics, etc.  
Read the instruction manual before usage.
- Contact us about delivery before ordering.

○ : Safety standard approved

● Recommended Heatsink  P212

# PH300S/PH600S-SERIES

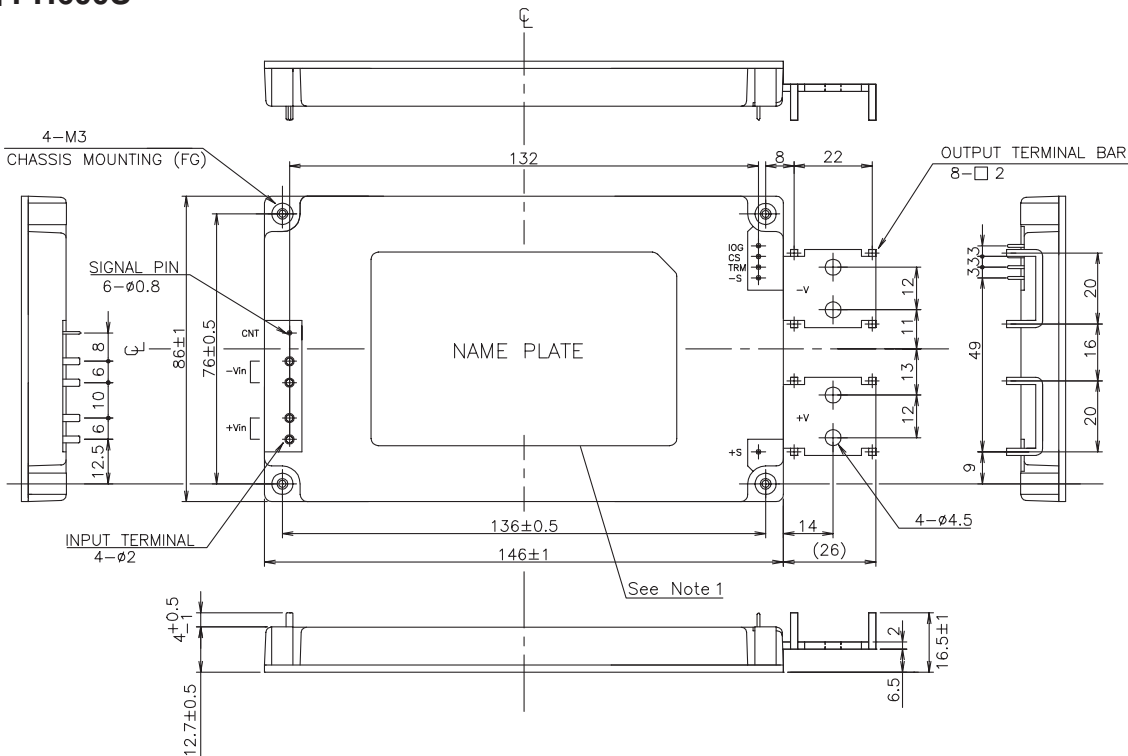
## PH300S



Note 1: \*Model name, Input voltage range, Nominal output voltage, Maximum output current and country of manufacture are shown here.  
Note 2: Input & output terminal.....6-Ø2  
6-Ø8

(Unit: mm)

## PH600S



Note 1: \*Model name, Input voltage range, Nominal output voltage, Maximum output current and country of manufacture are shown here.

(Unit: mm)

Power Module