

PLCC SOCKETS

PLASTIC LEADED CHIP CARRIER SOCKET

SURFACE MOUNT

PLCC SERIES

INTRODUCTION:

Adam Tech Surface Mount PLCC Sockets are a low profile, compact, hi-temp design specifically engineered to be compatible with IR reflow and Vapor Phase soldering processes. The contact configuration is on the same pattern as standard EIA/JEDEC chips and allows visibility of every solder joint for inspection or repair. High normal force contacts ensure superior continuity and visual markings, both internal and external, facilitate proper registration. They are widely used in critical height restricted applications.

FEATURES:

- Ultra low profile
- High normal force contacts
- Same mounting pattern as mated chip
- Open bottom allows inspection or repair of solder joints without removing socket
- Visual and mechanical polarization for proper chip orientation
- Body slots allow use of PLCC extraction tool
- Designed for automatic insertion

MATING OPTIONS:

Mates with PLCC's conforming to EIA/JEDEC specifications in registration MO-047, AA through AH

SPECIFICATIONS:

Material:

Insulator: High temp Polyphenylene Sulfide (PPS), glass reinforced rated UL 94V-0

Contacts: Phosphor Bronze

Plating:

100 μ m bright tin plate to MIL-T-10727, Type 1 over 50 μ m copper underplate to MIL-C-14550. Optional 5 μ m gold to MIL-G-45204, Type II, Grade C in contact area.

Electrical:

Operation voltage: 250 VAC max

Current rating: 1 Amp max

Contact resistance: 20 m Ω max

Insulation resistance: 1000 M Ω min @ 600 VDC between adjacent contacts (75°F and 50% R.H.)

Dielectric withstanding voltage: 600 VAC min rms (sea level)

Capacitance: 1.0 pF max between adjacent contacts

Mechanical:

Insertion force: 180 gms max per contact

Withdrawal force: 28.35 gms min per contact

Environmental:

Operating temperature: -65°C to +105°C (PPS)
-65°C to +125°C (LCP)

ACCESSORIES:

Adam Tech PLCC-Ext Extraction tool

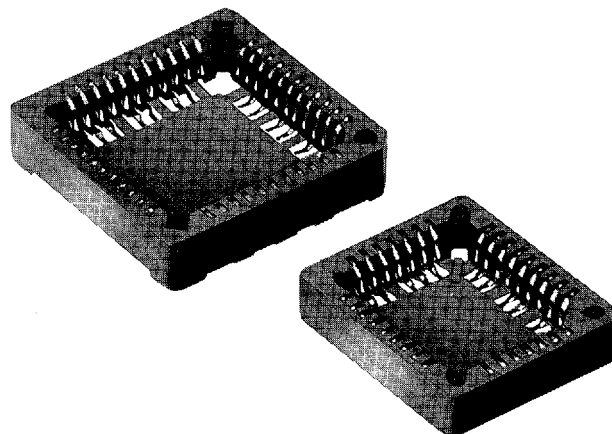
PACKAGING:

Plastic tubes, tape and reeled available.

APPROVALS AND CERTIFICATIONS:

Recognized under the component program of Underwriters Laboratories, Inc. No. E130225

Certified by Canadian Standards Association No. LR75112



ORDERING INFORMATION

PLCC

68

AT

NSMT

SERIES INDICATOR

PLCC = Plastic Leaded Chip Carrier Socket

CONTACT CONFIGURATION

NSMT = Low profile, surface mount leads

ESMT = Low profile, surface mount leads automated version

CONTACTS

20, 28, 32,
44, 52, 68, 84

PLATING

AT = Tin-plated
AG = Gold-plated

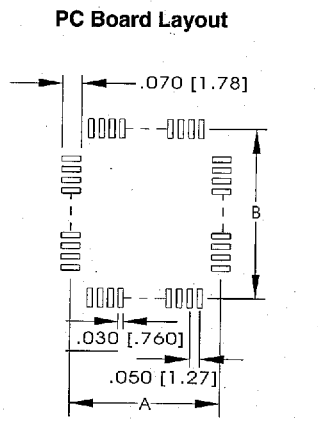
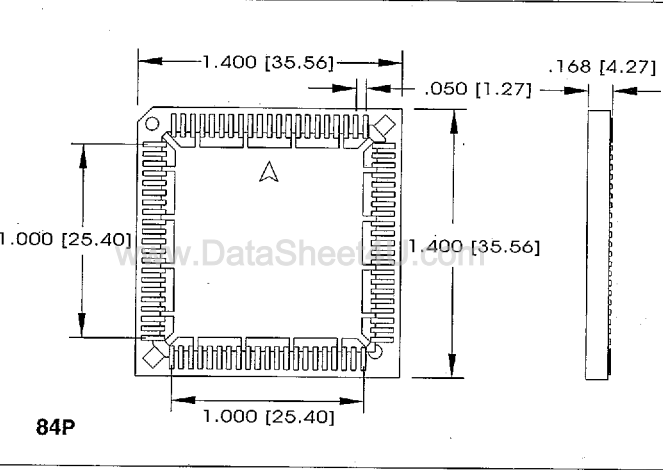
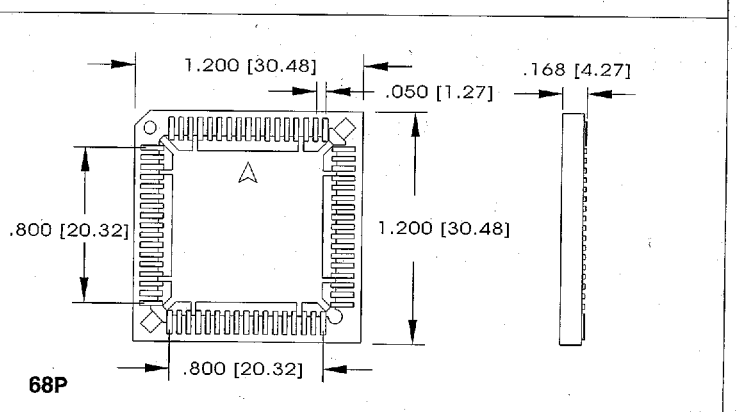
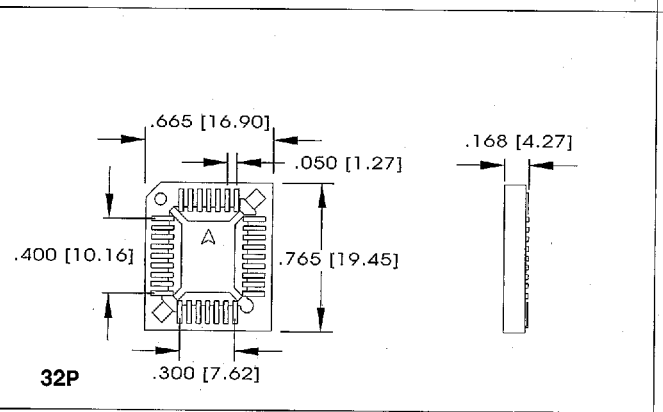
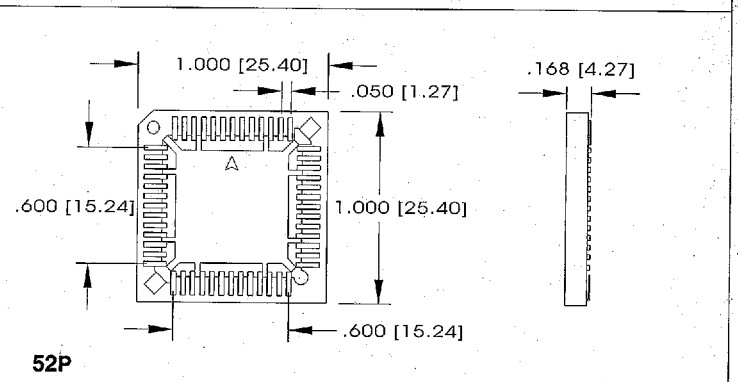
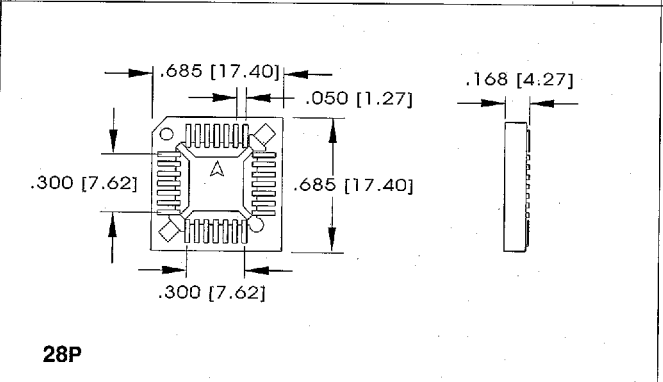
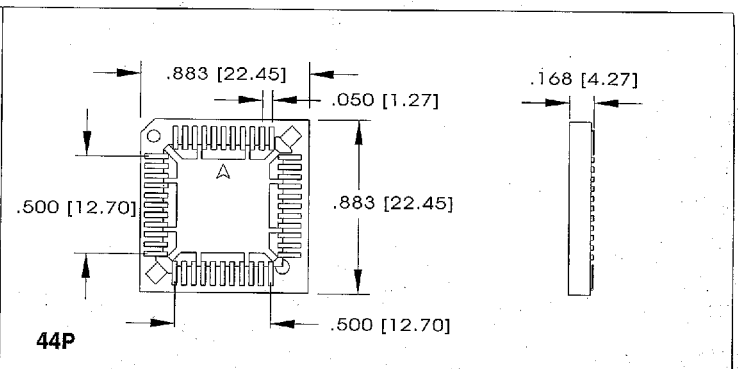
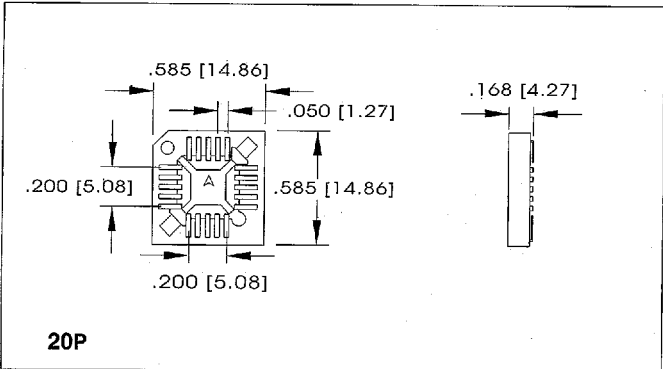
Hi-TEMP
OPTION

OPTIONS:

Add as suffix to basic part number

P = With polarizing pegs

TR = Tape and reel packaging



Dimensional:		
POSITION	A	B
20	0.333 [8.46]	0.333 [8.46]
28	0.433 [11.00]	0.433 [11.00]
32	0.433 [11.00]	0.533 [13.54]
44	0.633 [16.08]	0.633 [16.08]
52	0.733 [18.62]	0.733 [18.62]
68	0.933 [23.70]	0.933 [23.70]
84	1.130 [28.70]	1.130 [28.70]