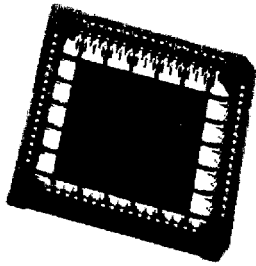


PLCC SOCKETS (surface mount)



ELECTRICAL

CONTACT CURRENT RATING:
1 AMP

DIELECTRIC WITHSTANDING:
500 VAC FOR 1 MINUTE

INSULATION RESISTANCE:
1000 MOHMS @ 500 VDC

CONTACT RESISTANCE:
30 mOHMS MAX @ dc 100mA

MATERIALS

CONTACTS: PHOSPHOR BRONZE

INSULATOR: PPS (94V-0)

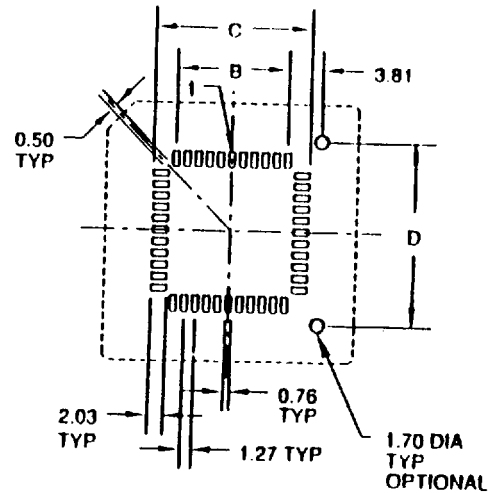
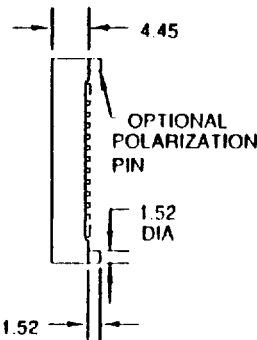
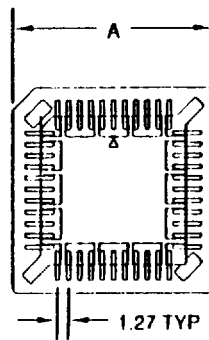
FINISHES

CONTACT: TIN

OPERATING TEMP.

-55 C to +105 C

DIMENSIONS



PCB LAYOUT

PINS	A	B	C	D
20	.613	.200	.404	.500
28	.713	.300	.504	.600
32	.713	.400	.600	.700
44	.913	.500	0.704	.800
52	1.060	.600	.804	.900
68	1.260	.800	1.000	1.100
84	1.461	1.000	1.200	1.300

DIMENSIONS ARE IN INCHES

PLCC SOCKETS (SURFACE MOUNT)		CROSS REFERENCE		
PART #	DESCRIPTION	AMP	ROBINSON	METHODE
PLCC-20SMT	20 PIN SMT SOCKET	N/A	PLCC-20-SMTL-TT	213-020-601
PLCC-28SMT	28 PIN SMT SOCKET	821579-1	PLCC-28-SMTL-TT	213-028-601
PLCC-32SMT	32 PIN SMT SOCKET	821664-1	PLCC-32-SMTL-TT	213-032-601
PLCC-44SMT	44 PIN SMT SOCKET	821548-1	PLCC-44-SMTL-TT	213-044-601
PLCC-52SMT	52 PIN SMT SOCKET	821550-1	PLCC-52-SMTL-TT	213-052-601
PLCC-68SMT	68 PIN SMT SOCKET	821542-1	PLCC-68-SMTL-TT	213-068-601
PLCC-84SMT	84 PIN SMT SOCKET	821546-1	PLCC-84-SMTL-TT	213-068-601