

## FAST RECOVERY RECTIFIERS

REVERSE VOLTAGE - 50 to 1000 Volts  
FORWARD CURRENT - 1.0 Amperes

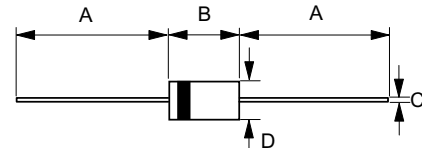
### FEATURES

- Fast switching for high efficiency
- Low cost
- Diffused junction
- Low reverse leakage current
- Low forward voltage drop
- High current capability
- The plastic material carries UL recognition 94V-0

### MECHANICAL DATA

- Case : JEDEC DO-41 molded plastic
- Polarity : Color band denotes cathode
- Weight : 0.012 ounces, 0.34 grams
- Mounting position : Any

### DO-41



DO-41		
Dim.	Min.	Max.
A	25.4	-
B	4.20	5.20
C	0.70 $\varnothing$	0.90 $\varnothing$
D	2.00 $\varnothing$	2.70 $\varnothing$
All Dimensions in millimeter		

### MAXIMUM RATINGS AND ELECTRICAL CHARACTERISTICS

Ratings at 25°C ambient temperature unless otherwise specified.  
Single phase, half wave, 60Hz, resistive or inductive load.  
For capacitive load, derate current by 20%

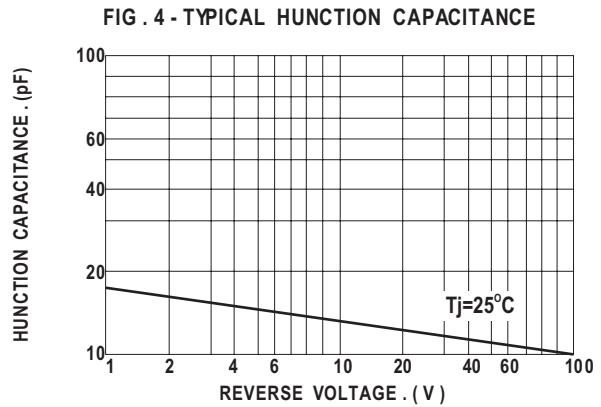
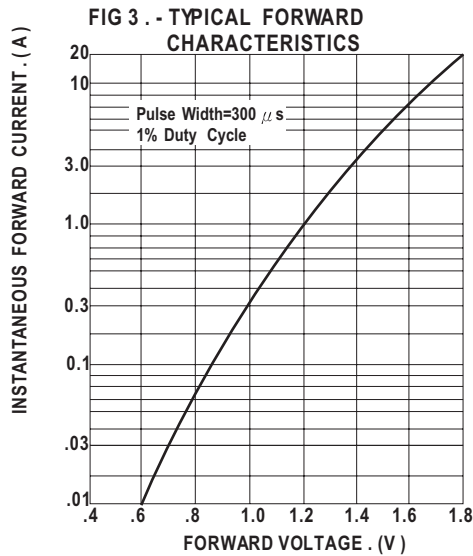
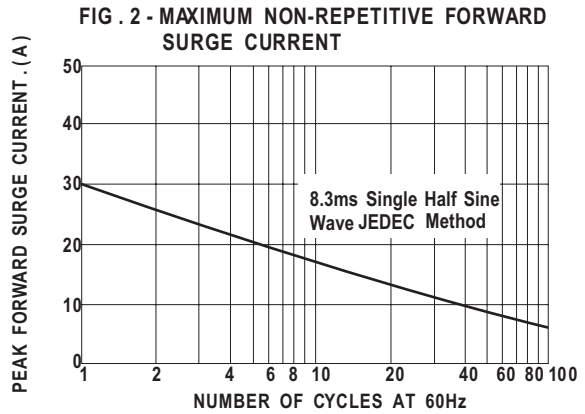
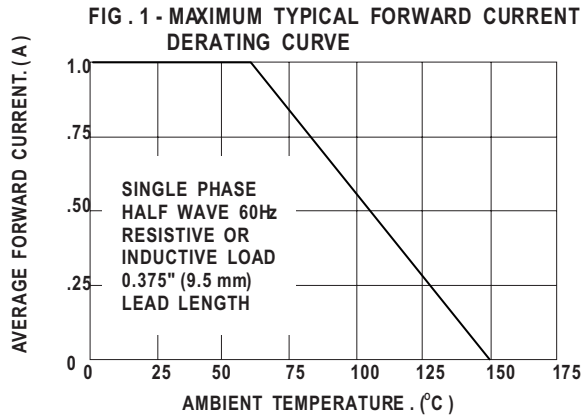
CHARACTERISTICS	SYMBOL	PR1001	PR1002	PR1003	PR1004	PR1005	PR1006	PR1007	UNIT
Maximum Recurrent Peak Reverse Voltage	V <sub>RRM</sub>	50	100	200	400	600	800	1000	V
Maximum RMS Voltage	V <sub>RMS</sub>	35	70	140	280	420	560	700	V
Maximum DC Blocking Voltage	V <sub>DC</sub>	50	100	200	400	600	800	1000	V
Maximum Average Forward Rectified Current @T <sub>A</sub> =55°C	I <sub>(AV)</sub>	1.0							A
Peak Forward Surge Current 8.3ms single half sine-wave super imposed on rated load (JEDEC Method)	I <sub>FSM</sub>	30							A
Maximum forward Voltage at 1.0A DC	V <sub>F</sub>	1.3							V
Maximum DC Reverse Current at Rated DC Blocking Voltage @T <sub>J</sub> =25°C @T <sub>J</sub> =100°C	I <sub>R</sub>	5.0 100							uA uA
Maximum Reverse Recovery Time (Note 1)	T <sub>RR</sub>	150				250	500		ns
Typical Junction Capacitance (Note 2)	C <sub>J</sub>	15							pF
Typical Thermal Resistance (Note 3)	R <sub>θJA</sub>	30							°C/W
Operating Temperature Range	T <sub>J</sub>	-55 to +150							°C
Storage Temperature Range	T <sub>STG</sub>	-55 to +150							°C

NOTES : 1. Measured with I<sub>F</sub>=0.5A, I<sub>R</sub>=1A, I<sub>RR</sub>=0.25A.

2. Measured at 1.0MHz and applied reverse voltage of 4.0V DC.

3. Thermal Resistance Junction to Case at 9.5mm Lead Length. PCB Mounted JEDEC Registered Value.

## RATING AND CHARACTERISTIC CURVES



**FIG. 1 -REVERSE RECOVERY TIME CHARACTERISTIC AND TEST CIRCUIT DIAGRAM**

