

**FAST RECOVERY RECTIFIERS**

**REVERSE VOLTAGE – 50 to 1000 Volts  
FORWARD CURRENT – 1.0 Ampere**

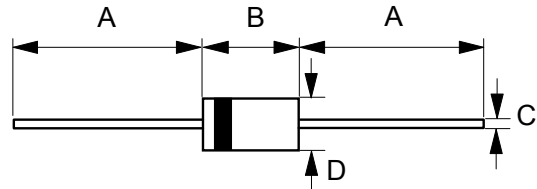
**FEATURES**

- Low cost
- Diffused junction
- Low forward voltage drop
- Low reverse leakage current
- High current capability

**MECHANICAL DATA**

- Case: JEDEC DO-41, molding compound has UL flammability classification 94V-0
- Polarity: Color band denotes cathode
- Weight: 0.326 grams (Approximate)
- Mounting Position: Any

**DO - 41**



DO - 41		
DIM	MIN	MAX
A	25.4	--
B	4.10	5.20
C	0.71 Ø	0.86 Ø
D	2.00 Ø	2.70 Ø
All dimension in millimeter		

**MAXIMUM RATINGS AND ELECTRICAL CHARACTERISTICS**

Ratings at 25°C ambient temperature unless otherwise specified.

**ABSOLUTE RATINGS**

PARAMETER	SYMBOL	PR1001	PR1002	PR1003	PR1004	PR1005	PR1006	PR1007	UNIT
Maximum repetitive peak reverse voltage	$V_{RRM}$	50	100	200	400	600	800	1000	V
Maximum DC blocking voltage	$V_{DC}$	50	100	200	400	600	800	1000	V
Average rectified output current per device @ $T_A=75^\circ C$	$I_{(AV)}$	1.0							A
Peak forward surge current 8.3ms single half sine-wave superimposed on rated load	$I_{FSM}$	30							A
Operating temperature range	$T_J$	-55 to +125							°C
Storage temperature range	$T_{STG}$	-55 to +150							°C

**STATIC ELECTRICAL CHARACTERISTICS**

PARAMETER	TEST CONDITION	SYMBOL	MAX.						UNIT
Forward voltage	$I_F = 1.0A$ $T_J = 25^\circ C$	$V_F$	1.2						V
Leakage current	$V_R$ at rated $T_J = 25^\circ C$ $T_J = 100^\circ C$	$I_R$	5 100						uA
Typical junction capacitance (Note 1)		$C_J$	25			15			pF

**THERMAL CHARACTERISTICS**

PARAMETER	SYMBOL	TYP.			UNIT
Thermal resistance (Note 2)	$R_{thJA}$	55			°C/W
	$R_{thJL}$	14			
	$R_{thJC}$	12			

**DYNAMIC ELECTRICAL CHARACTERISTICS**

PARAMETER	TEST CONDITION	SYMBOL	MAX.				UNIT
Reverse recovery time	$I_F = 0.5A, I_{RR} = 0.25A, I_R = 1.0A$	$T_{RR}$	150	250	500		ns

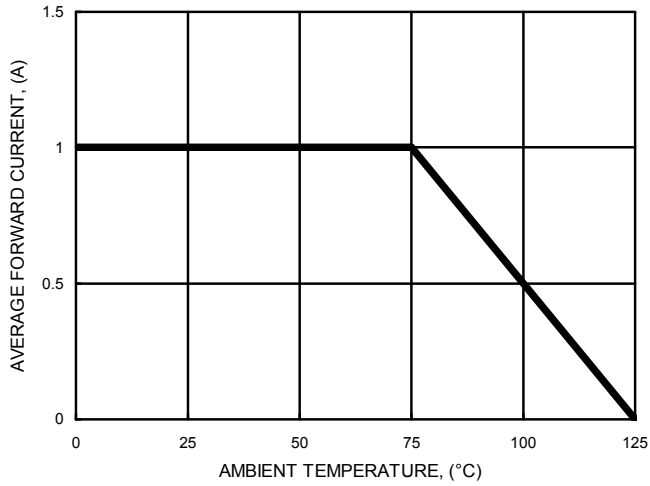
**Note :**

- (1) Measured at 1.0MHz and applied reverse voltage of 4.0V DC
- (2) Thermal resistance junction to ambient and case,

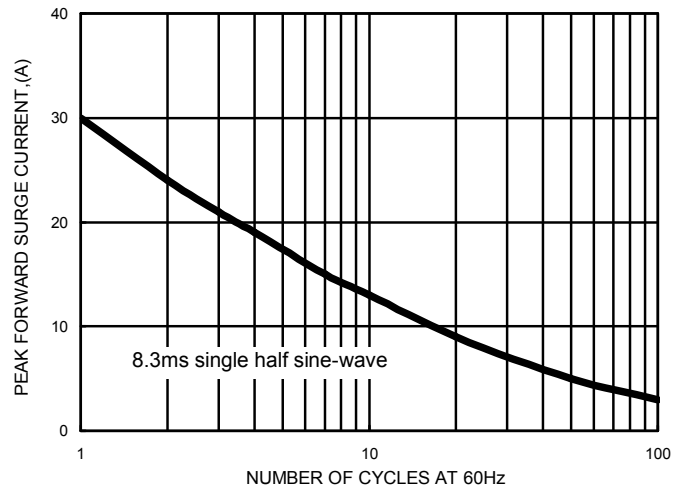
**RATING AND CHARACTERISTIC CURVES  
PR1001 thru PR1007**



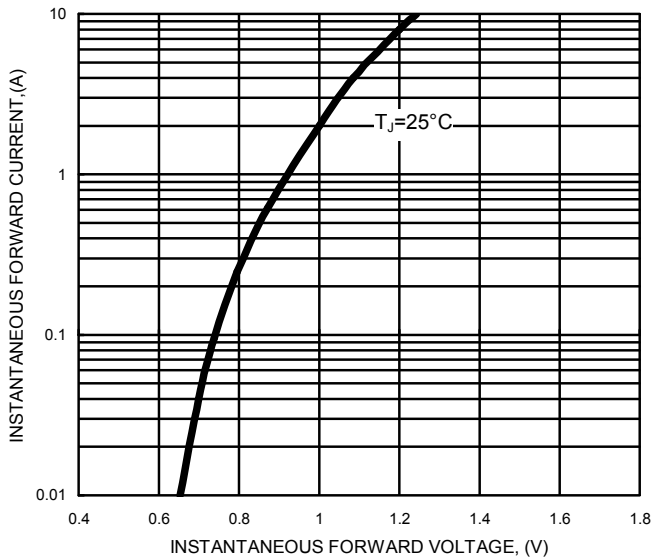
**FIG.1- FORWARD CURRENT DERATING CURVE**



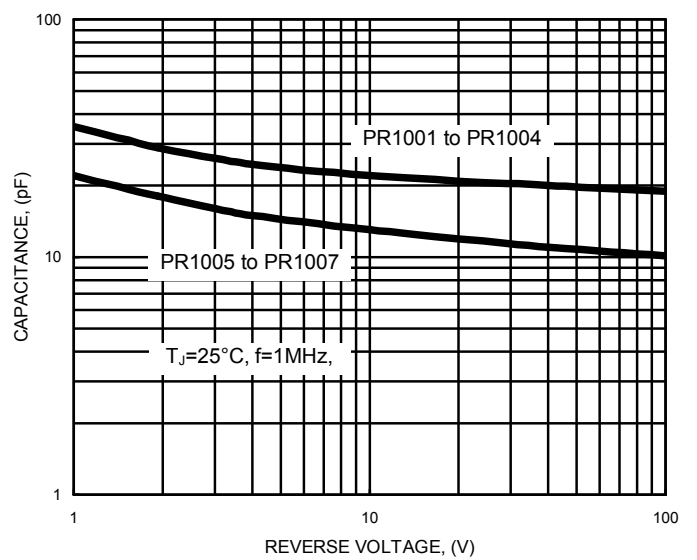
**FIG.2- MAXIMUM NON-REPETITIVE SURGE CURRENT**



**FIG.3- TYPICAL FORWARD CHARACTERISTICS**



**FIG.4- TYPICAL JUNCTION CAPACITANCE**



## **Important Notice and Disclaimer**

LSC reserves the right to make changes to this document and its products and specifications at any time without notice. Customers should obtain and confirm the latest product information and specifications before final design, purchase or use.

LSC makes no warranty, representation or guarantee regarding the suitability of its products for any particular purpose, nor does LSC assume any liability for application assistance or customer product design. LSC does not warrant or accept any liability with products which are purchased or used for any unintended or unauthorized application.

No license is granted by implication or otherwise under any intellectual property rights of LSC. LSC products are not authorized for use as critical components in life support devices or systems without express written approval of LSC.