

LED-CONVERTER UNIT

PS-LD0609-049(S) (22 W)

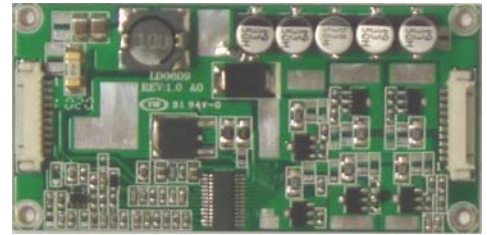
(PRELIMINARY INFORMATION)

DESCRIPTION :

This low profile LED converter is optimized for Sharp Display LQ121X3LG02

APPLICABLE:

- 1~5 LED lines (Serial Mode)
- Pout max. 3,5 Watt per line, total max. 22 Watt
- LED Voltage max. 38Vdc
- Lamp Current max. 70 mAdc per line



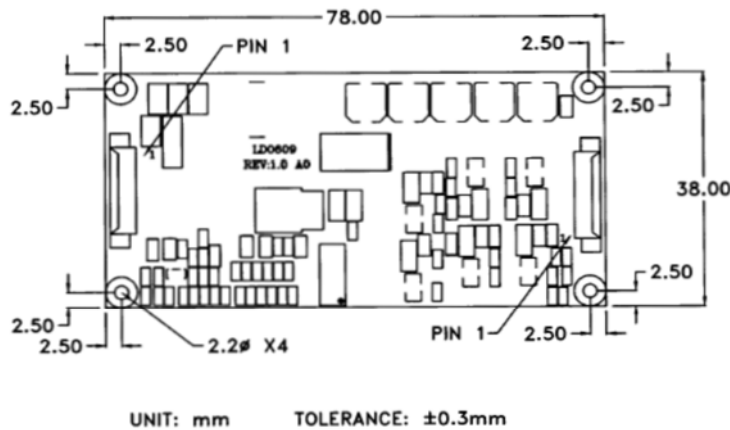
FEATURES :

- Internal Open LED Detection for every Line
- Analog Dimming with int. PWM
- 1000:1 dimming ratio
- Remote ON / OFF
- RoHS compliant (S)
- High output voltage

TEMPERATURE & HUMIDITY :

- Operating Temperature Range -20°C ~ +85°C
- Storage Temperature Range -20°C ~ +85°C
- Humidity 95 %RH max

DIMENSIONS : L x W x H 78 x 38 x 9.0 mm



Weight :9 (g) typ.

Components

No.	Part Description	Qty.	Material	Note
1	PCB	1	UL94V-0 (FR-4 or CEM-3)	t=1.0mm
2	Connector CN1	1	53261-1090	Molex
3	Connector CN2	1	53261-1090	Molex

Power Systems – The Power Solution

Web: www.Power-Systems.de
 Email: Info@Power-Systems.de

Address: Hauptstr. 48 ; 74360 Ilsfeld-Auenstein / Germany
 Tel. : + 49 / 70 62 / 67 59 - 6
 Fax: + 49 / 70 62 / 67 59 - 800

LED-CONVERTER UNIT

PS-LD0609-049(S) (22 W)

(PRELIMINARY INFORMATION)

Input side CN1

Pin No.	Symbols	Ratings
CN 1-1	V _{in}	10.8 ~ 13.2 Vdc
CN 1-2	V _{in}	10.8 ~ 13.2 Vdc
CN 1-3	V _{in}	10.8 ~ 13.2 Vdc
CN 1-4	V _{in}	10.8 ~ 13.2 Vdc
CN 1-5	GND	-
CN 1-6	GND	-
CN 1-7	GND	-
CN 1-8	GND	-
CN 1-9	V _{rmt}	0 ~ 0.8 = OFF / 2.5 ~ V _{in} = ON
CN 1-10	V _{br}	0 ~ 5.0 Vdc

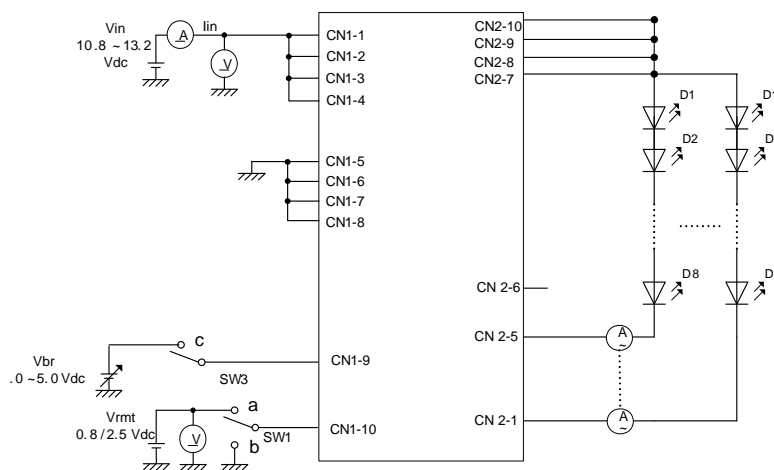
Output side CN2

Pin No.	Symbols	Ratings
CN2-1	RTN1 (-)	LED LINE 1 RETURN
CN2-2	RTN2 (-)	LED LINE 2 RETURN
CN2-3	RTN3 (-)	LED LINE 3 RETURN
CN2-4	RTN4 (-)	LED LINE 4 RETURN
CN2-5	RTN5 (-)	LED LINE 5 RETURN
CN2-6	RTN6 (-)	N.C
CN2-7	V _{high} (+)	max 38Vdc
CN2-8	V _{high} (+)	max 38Vdc
CN2-9	V _{high} (+)	max 38Vdc
CN2-10	V _{high} (+)	max 38Vdc

ELECTRICAL CHARACTERISTICS :

Parameters	Symbols	Conditions			Specification			Unit	Note
		V _{in} (V)	V _{br} (V)	T _u (°C)	Min.	Typ.	Max.		
Output Current	I _{out}	10.8 ~ 13.2	0	-20~+85	65	70	75	m A _{dc}	V _{br} = 0Vdc
Output Current	I _{min}	10.8 ~ 13.2	5	-20~+85	-	10	-	%	V _{br} = 5Vdc
Input Current	I _{in}	10.8 ~ 13.2	0	-20~+85	0.3	-	2.5	A _{dc}	
Open Load Shutdown	V _{bias}	10.8 ~ 13.2	0	-20~+85	-	35	-	Vdc	
PWM Frequency	f(PWM)	10.8 ~ 13.2	0	-20~+85	150	-	300	Hz	
Output Power	P _{out}	10.8 ~ 13.2	0	-20~+85	TBD	22	TBD	Watt	T _u : -20~+85degC

TEST CIRCUIT :



CABLES :

for input: 500 mm, stripped and tinned ends, order key <input cable #6>
for output: 500 mm, stripped and tinned ends, order key <input cable #6>