



# Power Splitter

## PS Series

### Features

- Resistive type power splitter. Wide frequency range : DC to 20Ghz.
- Wide band provides less distortion of square pulses of digital signals
- Small and easy to mount
- Special design and thin film produce less reflection.

### Applications

- Communication devices
- Wide band measuring instrumentation



## Part numbering system

**PS 1608 G T2 - R50 - T1**

Series code	PS 1608	G	T2 - R50 - T1	Packing quantity: T=Tape (T1/T5), B=Bulk
Size : PS1005,PS1608,PS2012 PS3216,PS5025				Impedance : 50Ω
G : General				Number of Output terminals

**PS 1005 T2 - R50 - FD - T1**

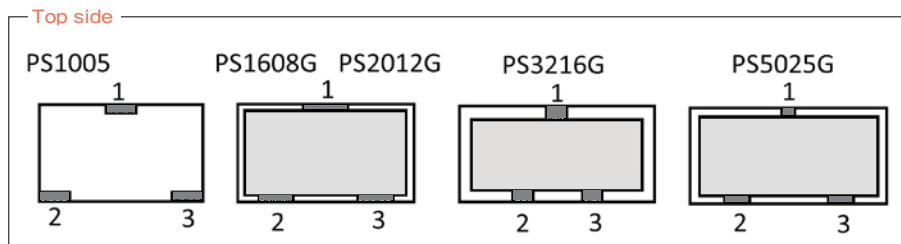
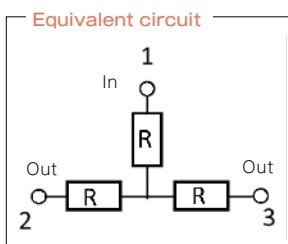
Series code	PS 1005	T2 - R50 - FD - T1	Packing quantity: T=Tape (T1/T5), B=Bulk
Size : PS1005			No GND, Need Face down mounting
Number of Output terminals			Impedance : 50Ω

## Electrical Specification

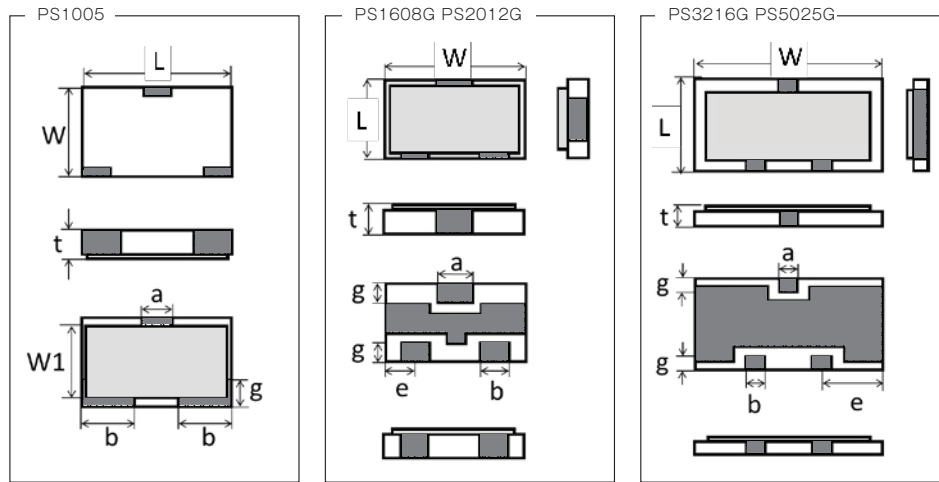
Type	PS1005 *1	PS1608G	PS2012G	PS3216G	PS5025G
Operating frequency	DC - 20GHz	DC - 20GHz	DC - 17.5GHz	DC - 15GHz	DC - 10GHz
Rated power	100mW	100mW	125mW	250mW	500mW
Insersion Loss	6dB±0.5dB				< 10GHz
	6dB±1.0dB				< 7.5GHz
Distribution Deviation		< 0.3dB (Max frequency)			
VSWR	≤1.3				< 10GHz
	≤1.5				< 7.5GHz
Operating temperature	-40°C ~ +125°C				
Packaging quantity	50pcs/bag(B)				
	1,000pcs/reel(T1)				
	5,000pcs/reel(T5)				

\*1 The PS1005 series has no ground plane.

## Equivalent Circuit and pin arrangement



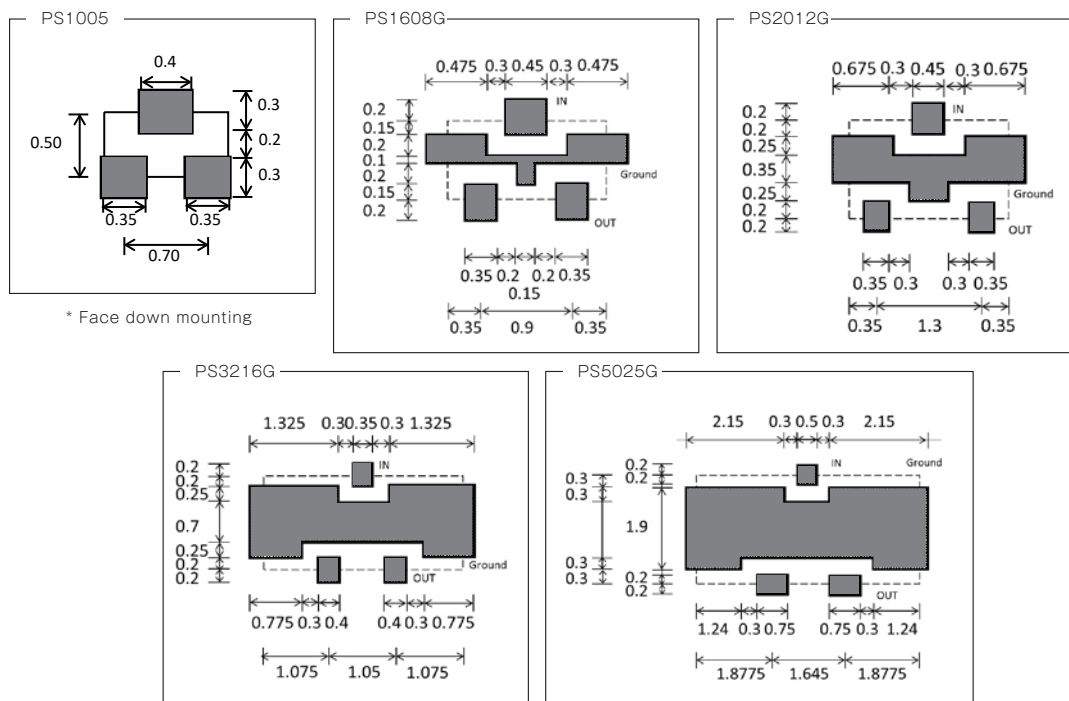
## ◆ Dimensions



Type	Size (inch)	W	L	t	a	b	e	g
PS1005	0402	1.00±0.10	0.50±0.10	0.30±0.10	0.40±0.10	0.35±0.10	—	0.20±0.10
PS1608G	0603	1.60±0.10	0.80±0.10	0.40±0.10	0.45±0.10	0.35±0.10	0.40±0.10	0.25±0.10
PS2012G	0805	2.00±0.10	1.25±0.10	0.40±0.10	0.45±0.15	0.35±0.15	0.35±0.10	0.25±0.10
PS3216G	1206	3.20±0.10	1.60±0.10	0.40±0.10	0.35±0.10	0.40±0.15	1.075±0.10	0.20±0.10
PS5025G	2010	5.00±0.20	2.50±0.20	0.80±0.20	0.50±0.20	0.75±0.20	1.65±0.20	0.30±0.15

(unit : mm)

## ◆ Recommended land patterns (soldering footprints)



## ◆ Derating Curve

