

PTC

PT2275

DECODER

DESCRIPTION

PT2275 is a remote control decoder paired with PT2265 utilizing CMOS technology. It is housed in a 16 pin DIP and has 8 outputs, data input inverting signal or non-inverting signal control and one bit error check circuit.

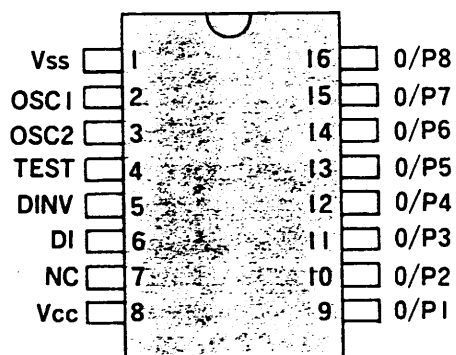
FEATURES

- Wide range operating voltage, $V_{cc} = 2.2V \sim 5.5V$
- Maximum output is up to 8 pins
- Start word can be custom coded
- Low power consumption
- High noise immunity with "one bit error check" scheme

APPLICATIONS

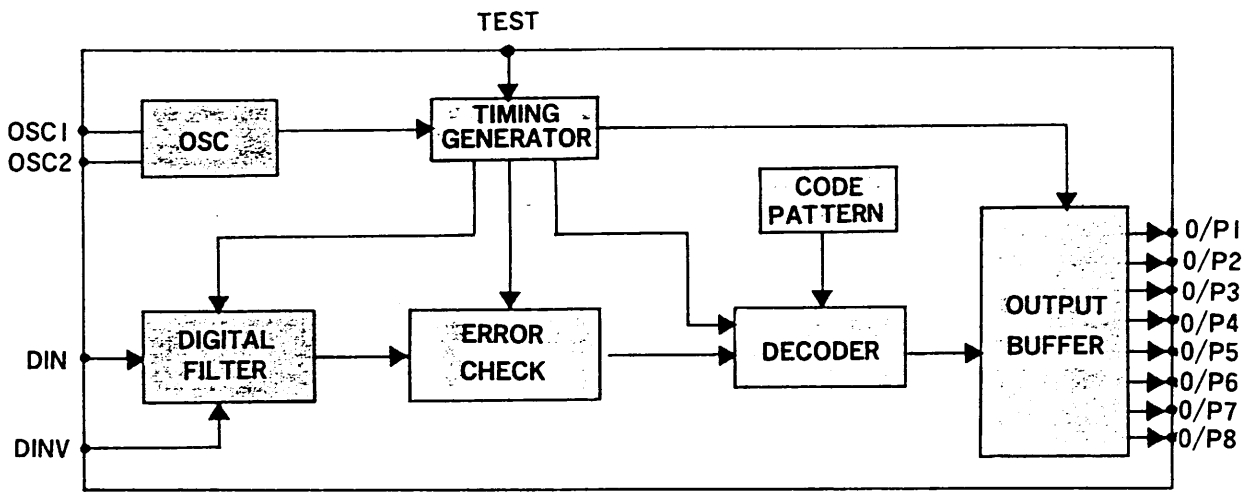
Fan Remote Control

PIN CONFIGURATION



PT2275
DECODER

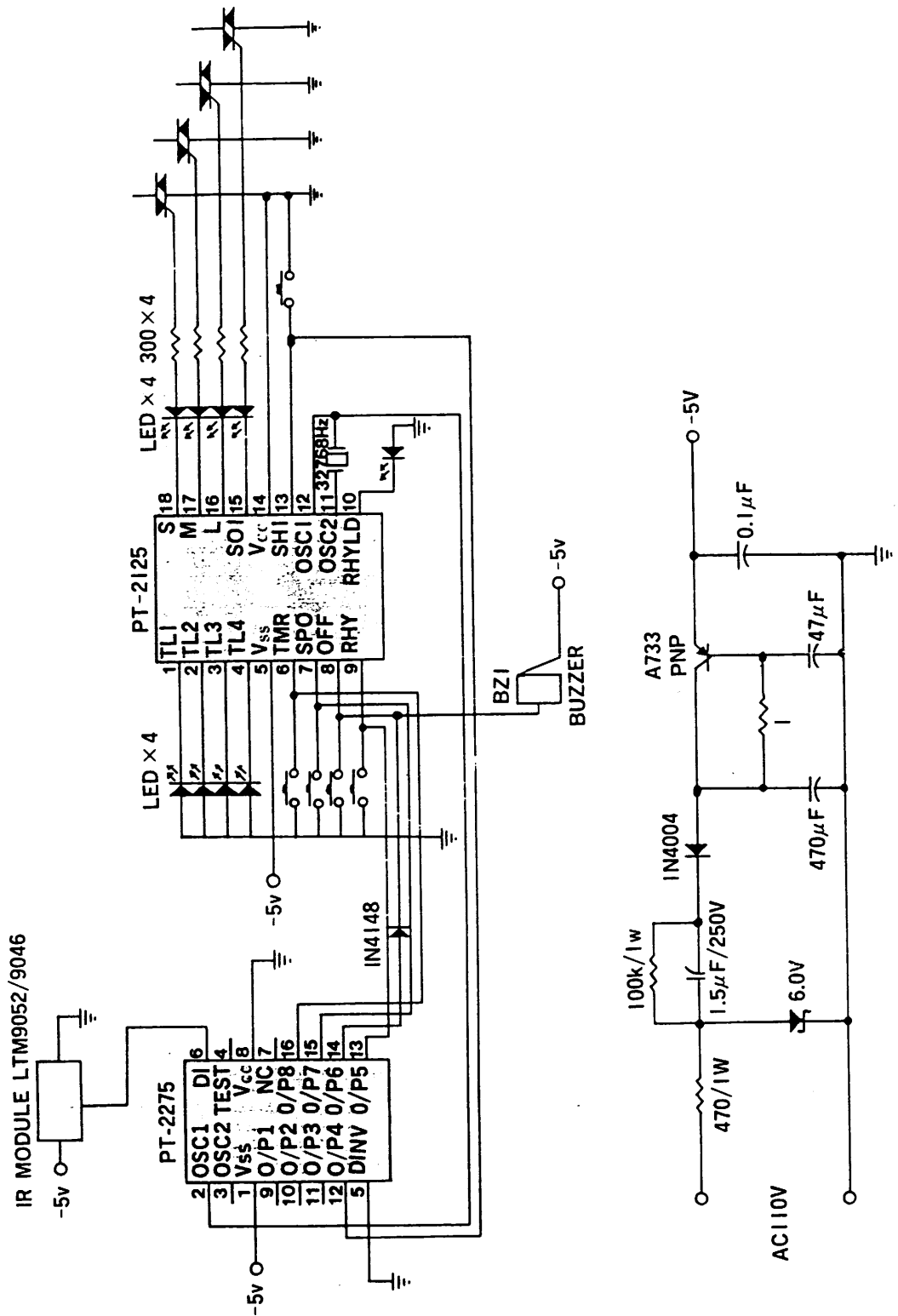
BLOCK DIAGRAM



PIN DESCRIPTION

PIN NAME	PIN NO.	I/O	FUNCTION/DESCRIPTION
V _{SS}	1		NEGATIVE POWER SUPPLY
OSC1	2	I	USED TO EXTERNALLY CONNECT A 32KHz CRYSTAL
OSC2	3	O	
TEST	4	I/O	FOR TESTING
DINV	5	I	IF CONNECTED TO V _{CC} , DIN ACCEPTS INVERSE SIGNAL. IF FLOATING DIN ACCEPTS NON-INVERSE SIGNAL
DIN	6	I	RECEIVING SIGNAL INPUT
NC	7		
V _{CC}	8		POSITIVE POWER SUPPLY
0/P1-0/P8	9~16	O	CONTROL EXTERNAL CIRCUIT

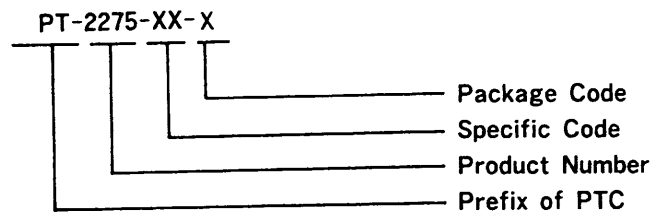
PT2275 IR RECEIVER APPLICATION CIRCUIT



ORDER INFORMATION

DECODER

PART NUMBER	PACKAGE
PT2275	16PIN DIP



Specific Code: 00-99:Custom code

Package Code: P:Plastic DIP, can be omitted

C:Ceramic DIP

F:Flat package

H:Chip form

S:Small outline

J:PLCC