

# PV6 Series



Illuminated



Water Protection



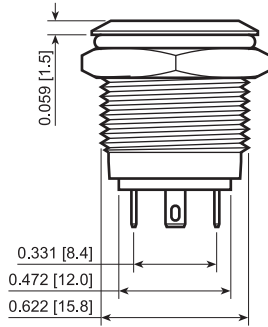
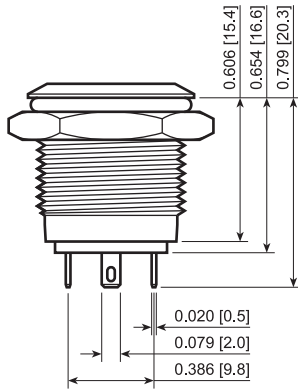
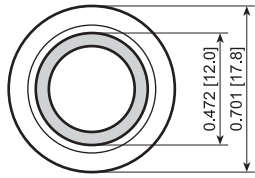
1 TON Heavy Duty



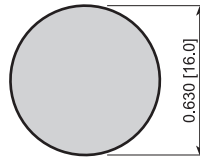
Front Panel Mount



www.DataSheet4U.com

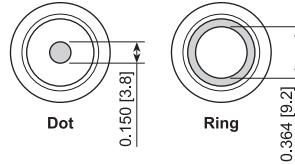


## Suggested Panel Cutout



Maximum Panel Thickness 0.394 [10.0mm]

## Illumination Options



## FEATURES:

- Vandal and Water Resistant
- Long Life Expectancy

## SPECIFICATIONS:

**RATING:** 2A 48VDC  
**ILLUMINATION BASE RATING:**  
 Red, Yellow, and Orange: 20mA 1.8V  
 Blue, Green, and White: 20mA 2.8V  
**TEMPERATURE:** -20°C to 70°C  
**CONTACT RESISTANCE:** 50mΩ Max.  
**INSULATION RESISTANCE:** 1,000MΩ Min.  
**DIELECTRIC STRENGTH:** 2,000VAC  
**MECHANICAL LIFE:** 1,000,000 Cycles  
**ELECTRICAL LIFE:** 50,000 Cycles

## MATERIALS:

**BUTTON:** Stainless Steel  
 Nickel Plated Brass  
**BODY:** Stainless Steel  
 Nickel Plated Brass  
**BASE:** PBT

ANTI-VANDAL



PV6F240SS-341

SPECIFICATIONS SUBJECT TO CHANGE WITHOUT NOTICE

| Series | Actuator Options | Terminal   | Function     | Rating       | Body Finish                       | Actuator Finish                   | Contact Material          | Lens Style          | Lens Color  | Illumination Voltage |
|--------|------------------|------------|--------------|--------------|-----------------------------------|-----------------------------------|---------------------------|---------------------|---|----------------------|
| PV6    | F - Flat         | 2 - Solder | 4 - Off-(On) | 0 - 2A 48VDC | N - Nickel<br>S - Stainless Steel | N - Nickel<br>S - Stainless Steel | None - Silver<br>G - Gold | 2 - Dot<br>3 - Ring | 0 - White<br>1 - Red<br>2 - Orange<br>3 - Green<br>4 - Blue<br>5 - Yellow | 1 - Base Voltage     |

Notes:  
 This switch may require an external resistor to prevent damage to the LED.  
 Additional material, illumination and marking options are available. Please ask your sales person.

## EXAMPLE PART NUMBERS:

**PV6F240SS-221** 1P Off-(On)  
 Flat Actuator, Orange Dot Illumination  
**PV6F240SS-331** 1P Off-(On)  
 Flat Actuator, Green Ring Illumination  
**PV6F240SS-341** 1P Off-(On)  
 Flat Actuator, Blue Ring Illumination

www.DataSheet4U.com



Ph: 503-297-8878 • Fax: 503-297-8879

40

P.O. Box 25110 • Portland, OR 97298 USA • www.lambind.com