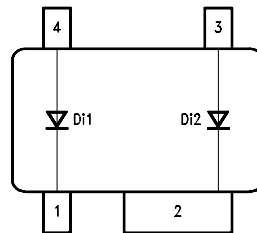
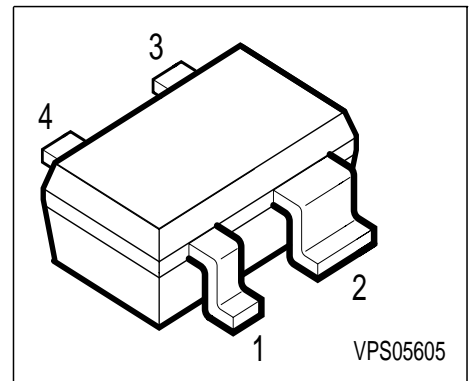


### Silicon Switching Diode Array

- For high-speed switching applications
- Electrical insulated diodes



EHA07289



Type	Marking	Ordering Code	Pin Configuration				Package
BAS 28W	JTs	Q62702-A3466	1 = C1	2 = C2	3 = A2	4 = A1	SOT-343

#### Maximum Ratings

Parameter	Symbol	Value	Unit
Diode reverse voltage	$V_R$	75	V
Peak reverse voltage	$V_{RM}$	85	V
Forward current	$I_F$	200	mA
Surge forward current, $t = 1 \mu s$	$I_{FS}$	4.5	A
Total power dissipation, $T_S = 103 \text{ }^\circ\text{C}$	$P_{tot}$	250	mW
Junction temperature	$T_j$	150	$^\circ\text{C}$
Storage temperature	$T_{stg}$	- 65 ...+150	$^\circ\text{C}$

#### Thermal Resistance

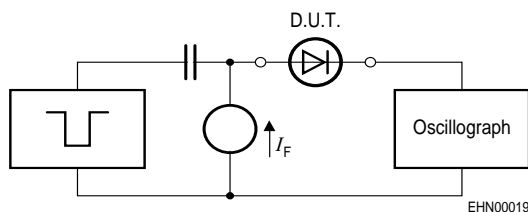
Junction - ambient <sup>1)</sup>	$R_{thJA}$	$\leq 460$	K/W
Junction - soldering point	$R_{thJS}$	$\leq 190$	

1) Package mounted on epoxy pcb 40mm x 40mm x 1.5mm / 0.5cm<sup>2</sup> Cu

**Electrical Characteristics** at  $T_A = 25^\circ\text{C}$ , unless otherwise specified.

Parameter	Symbol	Values			Unit
		min.	typ.	max.	
<b>DC characteristics</b>					
Breakdown voltage $I_{(BR)} = 10 \mu\text{A}$	$V_{(BR)}$	85	-	-	V
Forward voltage $I_F = 1 \text{ mA}$ $I_F = 10 \text{ mA}$ $I_F = 50 \text{ mA}$ $I_F = 150 \text{ mA}$	$V_F$	-	-	715 855 1000 1250	mV
Reverse current $V_R = 75 \text{ V}$	$I_R$	-	-	1	$\mu\text{A}$
Reverse current $V_R = 25 \text{ V}, T_A = 150^\circ\text{C}$ $V_R = 75 \text{ V}, T_A = 150^\circ\text{C}$	$I_R$	-	-	30 50	
<b>AC characteristics</b>					
Diode capacitance $V_R = 0 \text{ V}, f = 1 \text{ MHz}$	$C_D$	-	-	2	pF
Reverse recovery time $I_F = 10 \text{ mA}, I_R = 10 \text{ mA}, R_L = 100 \Omega$ , measured at $I_R = 1 \text{ mA}$	$t_{rr}$	-	-	6	ns

### Test circuit for reverse recovery time

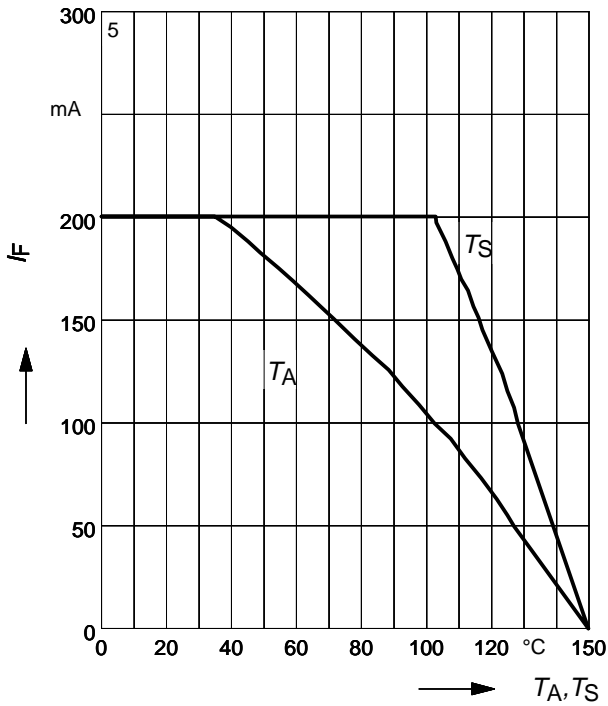


Pulse generator:  $t_p = 100\text{ns}$ ,  $D = 0.05$ ,  
 $t_r = 0.6\text{ns}$ ,  $R_i = 50\Omega$

Oscilloscope:  $R = 50\Omega$ ,  $t_r = 0.35\text{ns}$ ,  
 $C \leq 1\text{pF}$

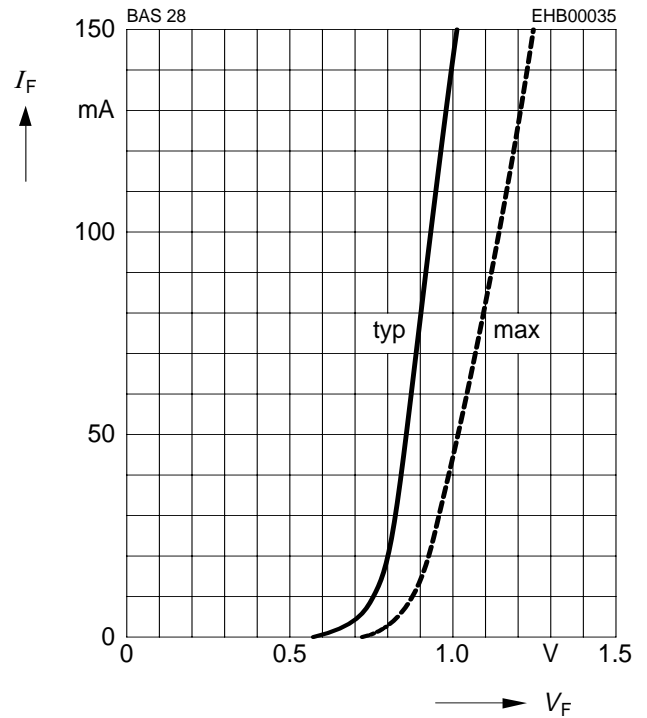
### Forward current $I_F = f(T_A^*; T_S)$

\* Package mounted on epoxy

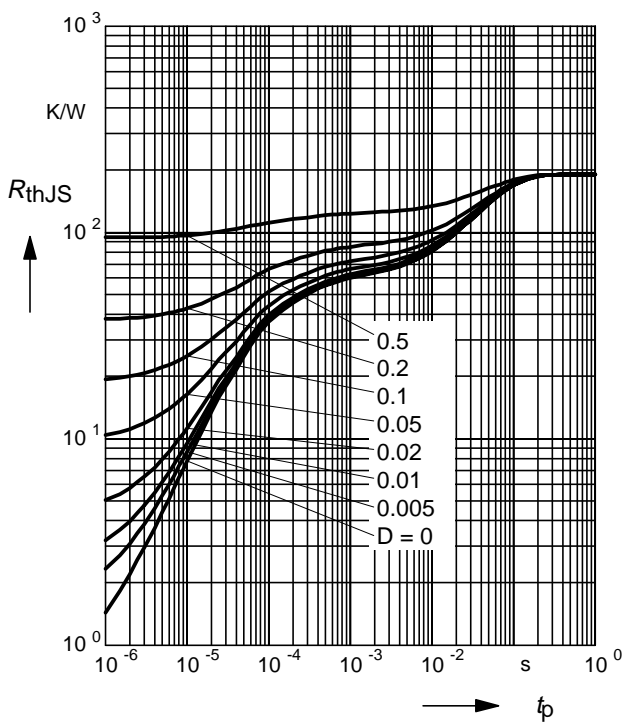


### Forward current $I_F = f(V_F)$

$T_A = 25^\circ\text{C}$

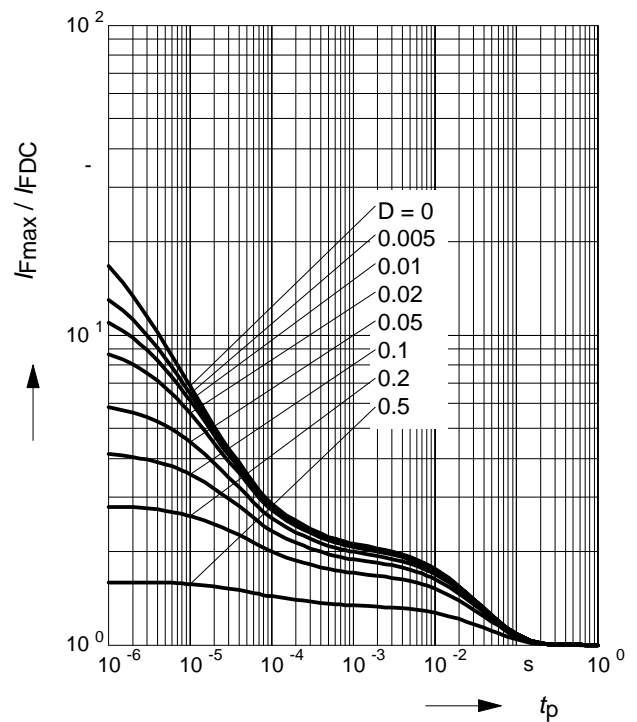


### Permissible Pulse Load $R_{thJS} = f(t_p)$

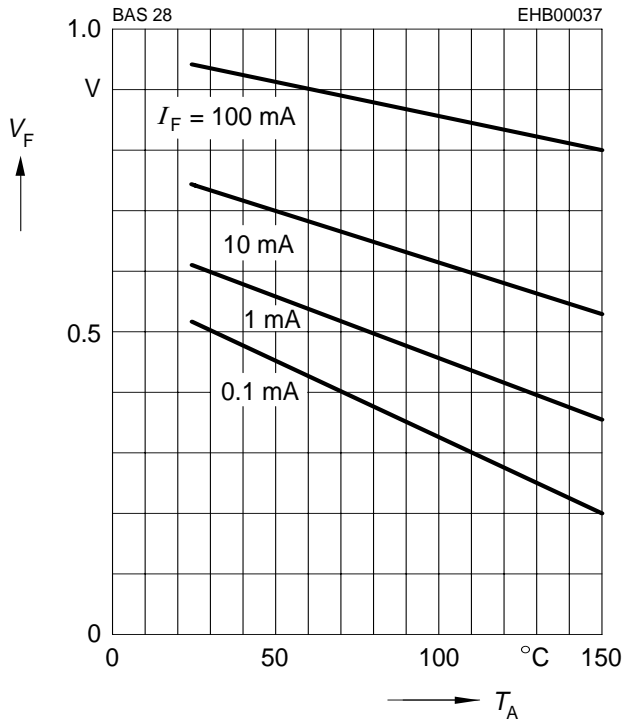


### Permissible Pulse Load

$$I_{Fmax} / I_{FDC} = f(t_p)$$



Forward voltage  $V_F = f(T_A)$



Reverse current  $I_R = f(T_A)$

