

f-33-11

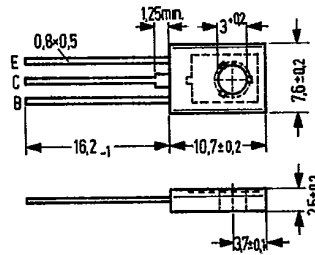
**NPN Silicon Epibase Transistors**

SIEMENS AKTIENGESELLSCHAFT

- BD 433
- BD 435
- BD 437
- BD 439
- BD 441

The transistors BD 433, BD 435, BD 437, BD 439, and BD 441 are NPN silicon epibase power transistors in TO 126 plastic package (12 A 3 DIN 41 869, sheet 4). The collector is electrically connected to the metallic mounting area. The transistors are particularly suitable for use in push-pull output stages, driver stages as well as for general AF applications. Their complementary types are the PNP transistors BD 434, BD 436, BD 438, BD 440, and BD 442.

Type	Ordering code
BD 433	Q62702-D201
BD 433/BD 434 paired	Q62702-D217
BD 435	Q62702-D203
BD 435/BD 436 paired	Q62702-D218
BD 437	Q62702-D212
BD 437/BD 438 paired	Q62702-D219
BD 439	Q62702-D280
BD 439/BD 440 paired	Q62702-D284
BD 441	Q62702-D285
BD 441/BD 442 paired	Q62702-D325
Mica washer	Q62902-B62
Spring washer	
A 3 DIN 137	Q62902-B63



Approx. weight 0.5 g Dimensions in mm  
 Transistor fixing with M 3 screw. Starting torque < 0.8 Nm, washer or spring washer should be used.  
 1) If a 50 μ mica washer (ungreased) is used, the thermal resistance increases by 8 K/W and in case of a greased one by 4 K/W.

Maximum ratings	BD 433	BD 435	BD 437	BD 439	BD 441	
Collector-emitter voltage	V <sub>CEO</sub> 22	32	45	60	80	V
Collector-emitter voltage	V <sub>CES</sub> 22	32	45	60	80	V
Collector-base voltage	V <sub>CBO</sub> 22	32	45	60	80	V
Emitter-base voltage	V <sub>EBO</sub> 5	5	5	5	5	V
Collector current	I <sub>C</sub> 4	4	4	4	4	A
Collector peak current	I <sub>CM</sub> 7	7	7	7	7	A
Emitter peak current	I <sub>EM</sub> 7	7	7	7	7	A
Base current	I <sub>B</sub> 1	1	1	1	1	A
Junction temperature	T <sub>J</sub> 150	150	150	150	150	°C
Storage temperature range	T <sub>stg</sub>	-55 to +150				°C
Total power dissipation (T <sub>case</sub> ≤ 25°C; V <sub>CE</sub> ≤ 12)	P <sub>tot</sub> 36	36	36	36	36	W

Thermal resistance	R <sub>thJA</sub>	R <sub>thJC</sub>				
Junction to ambient air	R <sub>thJA</sub> ≤ 100	≤ 100	≤ 100	≤ 100	≤ 100	K/W
Junction to mounting area	R <sub>thJC</sub> ≤ 3,5	≤ 3,5	≤ 3,5	≤ 3,5	≤ 3,5	K/W

- SIEMENS AKTIENGESELLSCHAFT

Static characteristics ( $T_{\text{case}} = 25^{\circ}\text{C}$ )

	BD 433	BD 435	BD 437	BD 439	BD 441	
Collector-emitter breakdown voltage ( $I_C = 1000 \text{ mA}$ )	$V_{(\text{BR})\text{CEO}} > 22$	$> 32$	$> 45$	$> 60$	$> 80$	V
Collector-emitter breakdown voltage ( $I_C = 100 \mu\text{A}$ )	$V_{(\text{BR})\text{CES}} > 22$	$> 32$	$> 45$	$> 60$	$> 80$	V
Collector-base breakdown voltage ( $I_C = 100 \mu\text{A}$ )	$V_{(\text{BR})\text{CBO}} > 22$	$> 32$	$> 45$	$> 60$	$> 80$	V
Emitter-base breakdown voltage ( $I_E = 1 \text{ mA}$ )	$V_{(\text{BR})\text{EBO}} > 5$	$> 5$	$> 5$	$> 5$	$> 5$	V
Collector cutoff current ( $V_{\text{CB}} = 22 \text{ V}$ )	$I_{\text{CBO}} < 100$	-	-	-	-	$\mu\text{A}$
Collector cutoff current ( $V_{\text{CB}} = 32 \text{ V}$ )	$I_{\text{CBO}} -$	$< 100$	-	-	-	$\mu\text{A}$
Collector cutoff current ( $V_{\text{CB}} = 45 \text{ V}$ )	$I_{\text{CBO}} -$	-	$< 100$	-	-	$\mu\text{A}$
Collector cutoff current ( $V_{\text{CB}} = 60 \text{ V}$ )	$I_{\text{CBO}} -$	-	-	$< 100$	-	$\mu\text{A}$
Collector cutoff current ( $V_{\text{CB}} = 80 \text{ V}$ )	$I_{\text{CBO}} -$	-	-	-	$< 100$	$\mu\text{A}$
Collector cutoff current ( $V_{\text{CB}} = 10 \text{ V}; T_{\text{amb}} = 150^{\circ}\text{C}$ )	$I_{\text{CBO}} < 1$	$< 1$	$< 1$	$< 1$	$< 1$	mA
Collector cutoff current ( $V_{\text{CB}} = V_{\text{CB max}}; T_{\text{amb}} = 150^{\circ}\text{C}$ )	$I_{\text{CBO}} < 3$	$< 3$	$< 3$	$< 3$	$< 3$	mA
Base-emitter forward voltage ( $I_C = 2 \text{ A}; V_{\text{CE}} = 1 \text{ V}$ )	$V_{\text{BE}} < 1.1$	$< 1.1$	$< 1.2$	$< 1.5$	$< 1.5$	V
Base-emitter forward voltage ( $I_C = 3 \text{ A}; V_{\text{CE}} = 1 \text{ V}$ )	$V_{\text{BE}} -$	-	$< 1.3$	$< 1.6$	$< 1.6$	V
Collector-emitter saturation voltage ( $I_C = 2 \text{ A}$ ) <sup>1)</sup>	$V_{\text{CEsat}} < 0.8$	$< 0.8$	-	-	-	V
Collector-emitter saturation spannung ( $I_C = 2 \text{ A}; I_B = 0.2 \text{ A}$ )	$V_{\text{CEsat}} < 0.5$	$< 0.5$	$< 0.6$	$< 0.8$	$< 0.8$	V
Collector-emitter saturation voltage ( $I_C = 3 \text{ A}; I_B = 0.3 \text{ A}$ )	$V_{\text{CEsat}} -$	-	$< 0.7$	$< 0.9$	$< 0.9$	V
DC current gain ( $I_C = 10 \text{ mA}; V_{\text{CE}} = 5 \text{ V}$ )	$h_{\text{FE}} > 40$	$> 40$	$> 30$	$> 20$	$> 15$	-
( $I_C = 500 \text{ mA}; V_{\text{CE}} = 1 \text{ V}$ ) <sup>2)</sup>	$h_{\text{FE}} > 85$	$> 85$	$> 85$	$> 40$	$> 40$	-
( $I_C = 2 \text{ A}; V_{\text{CE}} = 1 \text{ V}$ )	$h_{\text{FE}} > 50$	$> 50$	$> 40$	$> 25$	$> 15$	-

1) For the characteristic which passes through the point  $I_C = 2.2 \text{ mA}$  and  $V_{\text{CE}} = 1 \text{ V}$  at constant base current.2) Available as matching pairs with BD 434, BD 436, BD 438, BD 440, and BD 442. Condition for matching pairs  $h_{\text{FE1}}/h_{\text{FE2}} \leq 1.41$ .

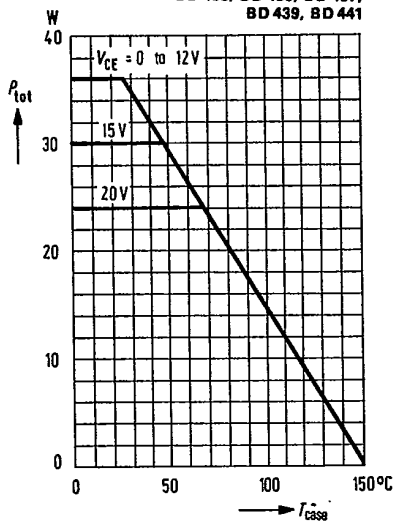
- BD 433
- BD 435
- BD 437
- BD 439
- BD 441

SIEMENS AKTIENGESELLSCHAFT

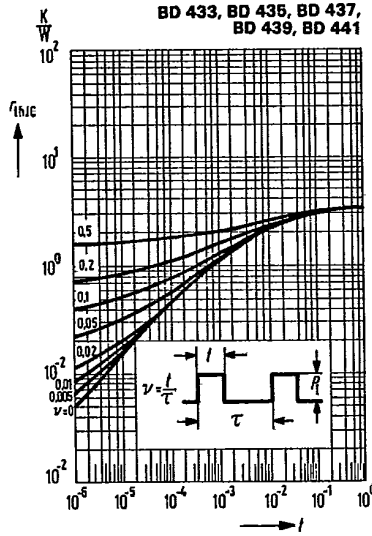
Dynamic characteristics ( $T_{case} = 25^{\circ}C$ )

	BD 433	BD 435	BD 437	BD 439	BD 441	
Transition frequency ( $I_C = 0.25 A$ ; $V_{CE} = 1 V$ ; $f = 1 MHz$ )	$>3$	$>3$	$>3$	$>3$	$>3$	MHz
Cutoff frequency in common emitter configuration ( $I_C = 0.25 A$ ; $V_{CE} = 1 V$ )	$>20$	$>20$	$>20$	$>20$	$>20$	kHz

Total perm. power dissipation  
 versus temperature  
 $P_{tot} = f(T_{case})$ ;  $V_{CE} = 0$  to  $12 V$   
 BD 433, BD 435, BD 437,  
 BD 439, BD 441

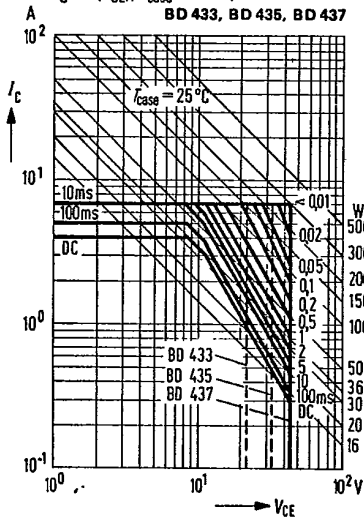


Permissible pulse load  
 $r_{thJC} = f(t)$ ;  $v =$  parameter  
 BD 433, BD 435, BD 437,  
 BD 439, BD 441

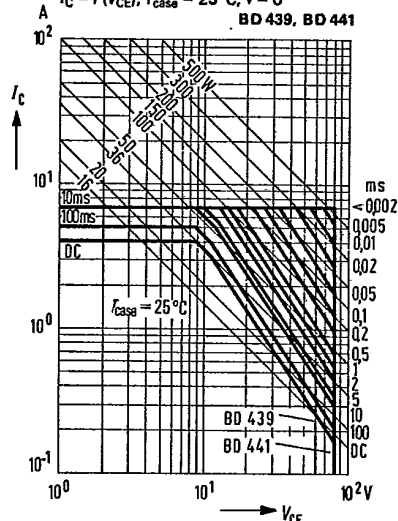


- BD 433
- BD 435
- BD 437
- BD 439
- BD 441

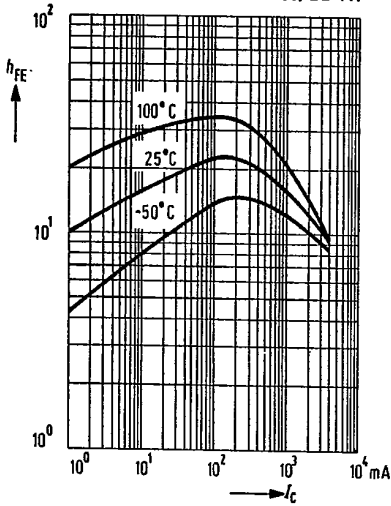
Permissible operating range  
 $I_C = f(V_{CE})$ ;  $T_{case} = 25^\circ C$ ,  $v = 0$   
 BD 433, BD 435, BD 437



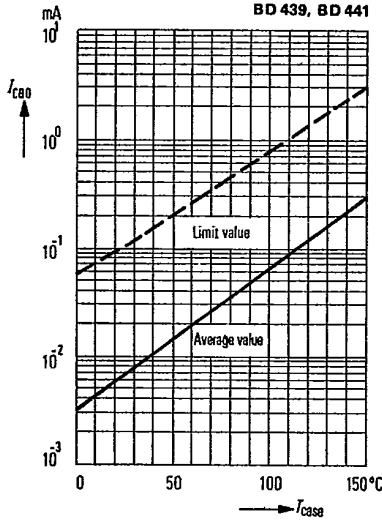
Permissible operating range  
 $I_C = f(V_{CE})$ ;  $T_{case} = 25^\circ C$ ,  $v = 0$   
 BD 439, BD 441



DC current gain  $h_{FE} = f(I_C)$ ;  
 $V_{CE} = 1V$ ;  $T_{case} = \text{parameter}$   
 BD 433, BD 435, BD 437,  
 BD 439, BD 441



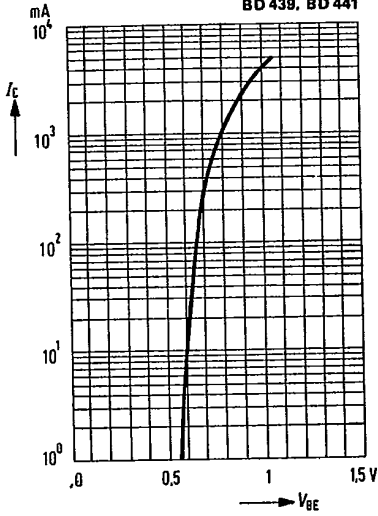
Collector cutoff current versus  
 temperature  $I_{CBO} = f(T_{case})$   
 $V_{CB} = V_{Cemax}$   
 BD 433, BD 435, BD 437,  
 BD 439, BD 441



T-33-11  
 BD 433  
 BD 435  
 BD 437  
 BD 439  
 BD 441

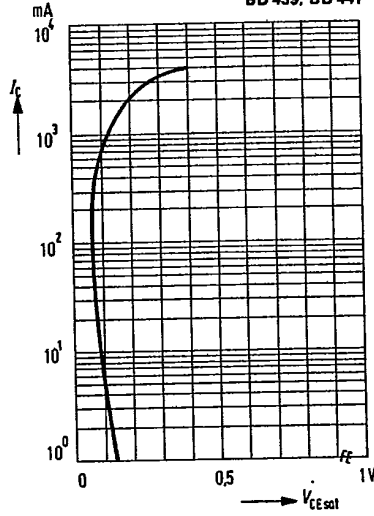
Collector current  $I_C = f(V_{BE})$

$V_{CE} = 2\text{ V}; T_{case} = 25^\circ\text{C}$   
 BD 433, BD 435, BD 437,  
 BD 439, BD 441



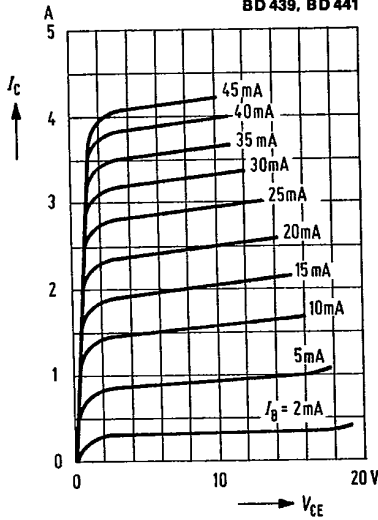
Collector-emitter saturation voltage

$V_{CEsat} = f(I_C); h_{FE} = 10; T_{amb} = 25^\circ\text{C}$   
 BD 433, BD 435, BD 437,  
 BD 439, BD 441



Output characteristics  $I_C = f(V_{CE})$

$I_B = \text{parameter}$   
 (common emitter configuration)  
 BD 433, BD 435, BD 437,  
 BD 439, BD 441



Transition frequency  $f_T = f(I_C)$

$T_{case} = 25^\circ\text{C}$   
 BD 433, BD 435, BD 437,  
 BD 439, BD 441

