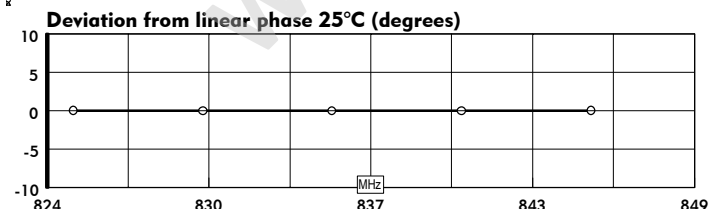
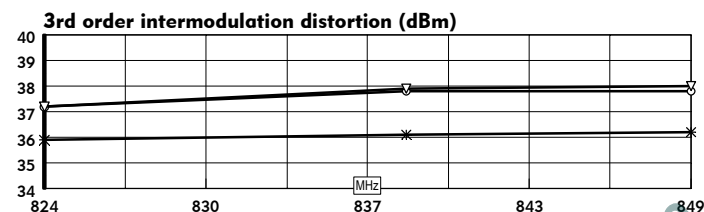
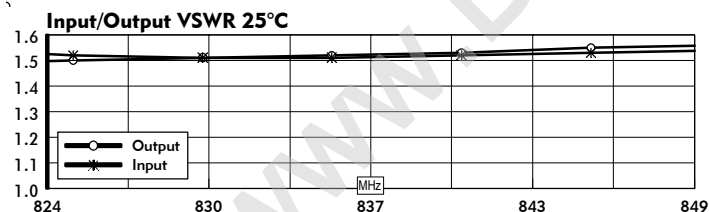
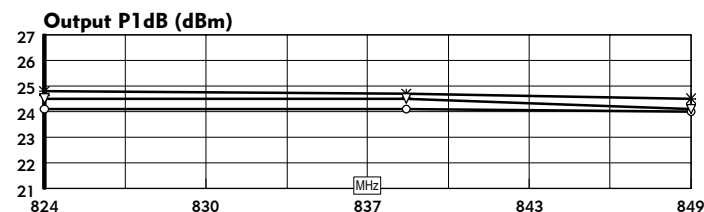
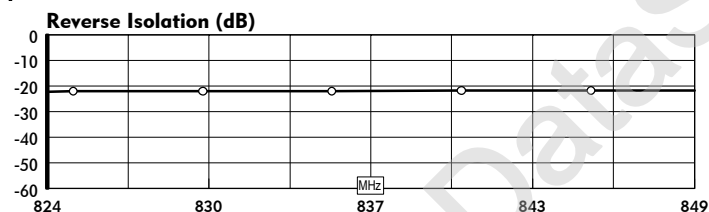
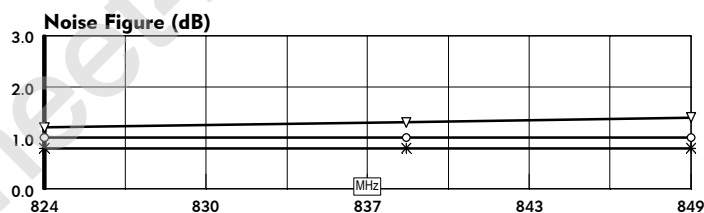
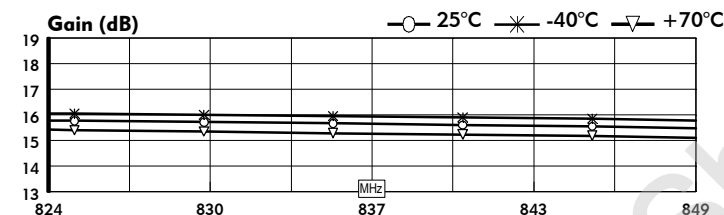


QBH-8710

- **824-849 MHz bandwidth**
- **High intercept point, +37 dBm typical IP3**
- **Low noise figure, 1.0 dB typical**
- **15 Vdc operation**

| Parameters | Typical | Guaranteed | Units |
|------------------------|------------------|--------------|---------|
| | 25°C | -40 to +70°C | |
| Frequency range | 824 - 849 | | MHz |
| Small signal gain | 16.0 | | dB |
| Gain flatness | 0.3 | 0.6 | dB p-p |
| Reverse isolation | 19 | 18 | dB |
| VSWR Input | 1.6:1 | 2.0:1 | |
| Output | 1.6:1 | 2.0:1 | |
| 1 dB compression | +24 | +23 | dBm |
| Output intercept point | | | |
| 3rd Order | +37 | +34 | dBm |
| 2nd Order | | | dBm |
| Noise figure | 1.0 | 1.6 | dB |
| DC supply voltage* | 15 | | Vdc |
| DC supply current | 90 | 110 | mA |
| Gain vs. Vdc | | | dB/Volt |
| Package/Housing | LCSM (E52-19422) | | |

*all specification ratings are based on DC supply voltage \pm 1%



TYPICAL S-PARAMETER DATA

| MHz | S11 | | S21 | | S12 | | S22 | |
|-----|-------|------|------|-------|-------|-------|-------|--------|
| | dB | Ang | dB | Ang | dB | Ang | dB | Ang |
| 825 | -13.8 | 44.0 | 15.8 | -27.4 | -22.0 | -62.8 | -14.0 | -157.2 |
| 830 | -13.8 | 37.5 | 15.7 | -29.4 | -22.0 | -64.3 | -13.9 | -159.5 |
| 835 | -13.8 | 30.6 | 15.7 | -31.3 | -21.9 | -65.8 | -13.7 | -162.1 |
| 840 | -13.8 | 24.0 | 15.6 | -33.2 | -21.8 | -67.3 | -13.5 | -164.6 |
| 845 | -13.7 | 17.4 | 15.5 | -35.1 | -21.8 | -69.0 | -13.4 | -167.1 |

ABSOLUTE MAXIMUM RATINGS

| | |
|----------------------|---------------|
| Power supply voltage | |
| Sustaining | +15.0 Vdc |
| Pulse (transient) | +18.0 Vdc |
| Temperature | |
| Operating | -55 to +100°C |
| Storage | -65 to +150°C |
| Maximum input drive | 3.0 Vrms |