

TRANSISTOR MODULE

QCA200A40/60

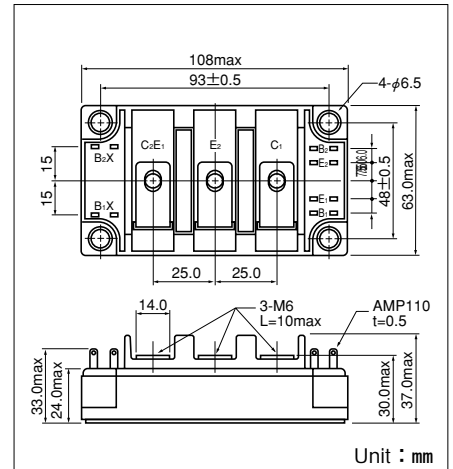
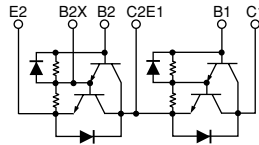
UL:E76102(M)

QCA200 is a dual Darlington power transistor module which has series-connected high speed, high power Darlington transistors. Each transistor has a reverse paralleled fast recovery diode. The mounting base of the module is electrically isolated from semiconductor elements for simple heatsink construction,

- $I_C=200A$, $V_{CEX}=400/600V$
- Low saturation voltage for higher efficiency.
- High DC current gain h_{FE}
- Isolated mounting base
- V_{EBO} 10V for faster switching speed.

(Applications)

Motor Control (VVVF), AC/DC Servo, UPS, Switching Power Supply, Ultrasonic Application



Maximum Ratings

($T_j=25^{\circ}C$ unless otherwise specified)

Symbol	Item	Conditions	Ratings		Unit
			QCA200A40	QCA200A60	
V_{CB0}	Collector-Base Voltage		400	600	V
V_{CEX}	Collector-Emitter Voltage	$V_{BE}=-2V$	400	600	V
V_{EBO}	Emitter-Base Voltage		10		V
I_C	Collector Current	() $p_w \leq 1ms$	200 (400)		A
$-I_C$	Reverse Collector Current		200		A
I_B	Base Current		12		A
P_T	Total power dissipation	$T_C=25^{\circ}C$	1250		W
T_j	Junction Temperature		-40 to +150		$^{\circ}C$
T_{stg}	Storage Temperature		-40 to +125		$^{\circ}C$
V_{iso}	Isolation Voltage	A.C.1minute	2500		V
	Mounting Torque	Mounting (M6)	Recommended Value 2.5-3.9 (25-40)		N·m (kgf·cm)
		Terminal (M6)	Recommended Value 2.5-3.9 (25-40)		
	Mass	Typical Value	470		g

Electrical Characteristics

Symbol	Item	Conditions	Ratings		Unit	
			Min.	Max.		
I_{CBO}	Collector Cut-off Current	$V_{CB}=V_{CB0}$		2.0	mA	
I_{EBO}	Emitter Cut-off Current	$V_{EB}=V_{EBO}$		800	mA	
$V_{CE0(SUS)}$	Collector Emitter Sustaining Voltage	$I_C=1A$	QCA200A40	300	V	
			QCA200A60	450		
$V_{CEX(SUS)}$			$I_C=40A, I_{B2}=-8A$	QCA200A40	400	V
				QCA200A60	600	
h_{FE}	DC Current Gain	$I_C=200A, V_{CE}=2V$	75			
		$I_C=200A, V_{CE}=5V$	100			
$V_{CE(sat)}$	Collector-Emitter Saturation Voltage	$I_C=200A, I_B=2.7A$		2.0	V	
$V_{BE(sat)}$	Base-Emitter Saturation Voltage	$I_C=200A, I_B=2.7A$		2.5	V	
t_{on}	Switching Time	$V_{CC}=300V, I_C=200A, I_{B1}=4A, I_{B2}=-4A$	On Time		μs	
t_s			Storage Time			
t_f			Fall Time			
V_{ECO}	Collector-Emitter Reverse Voltage	$-I_C=200A$		1.4	V	
$R_{th(j-c)}$	Thermal Impedance (junction to case)	Transistor part		0.1	$^{\circ}C/W$	
		Diode part		0.3		

