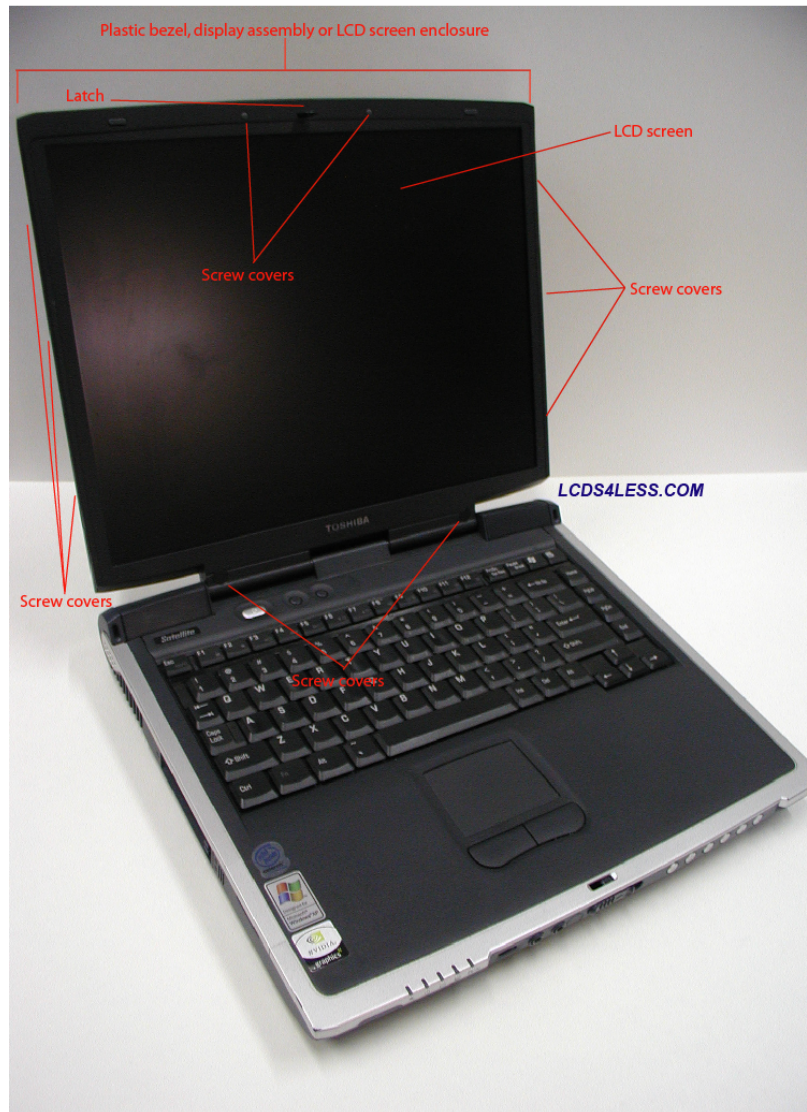


Laptop LCD Removal Instructions

The following instructions will help you easily remove and replace your laptop LCD screen. The entire process should take approximately 15 minutes and require only a small Phillips screwdriver and a knife.

Instructions

- Make sure your laptop is unplugged and you have removed your battery.
- Locate all screw covers on the display assembly. There are usually at least 4 screw covers, and they may either be facing you on the display assembly or they may be on the side of the display assembly.



- The following Toshiba Satellite model has 2 screw covers at the bottom of the display assembly facing the user and 3 screw covers on each side of the display assembly.



- Use a knife or some other sharp object like an exacto blade to pick off all the screw covers.



- Remove screw covers from side of display assembly if any.



- Underneath each of the screw covers should be a small phillips screw as shown below.



- Example of screw located under screw cover on side of display assembly.

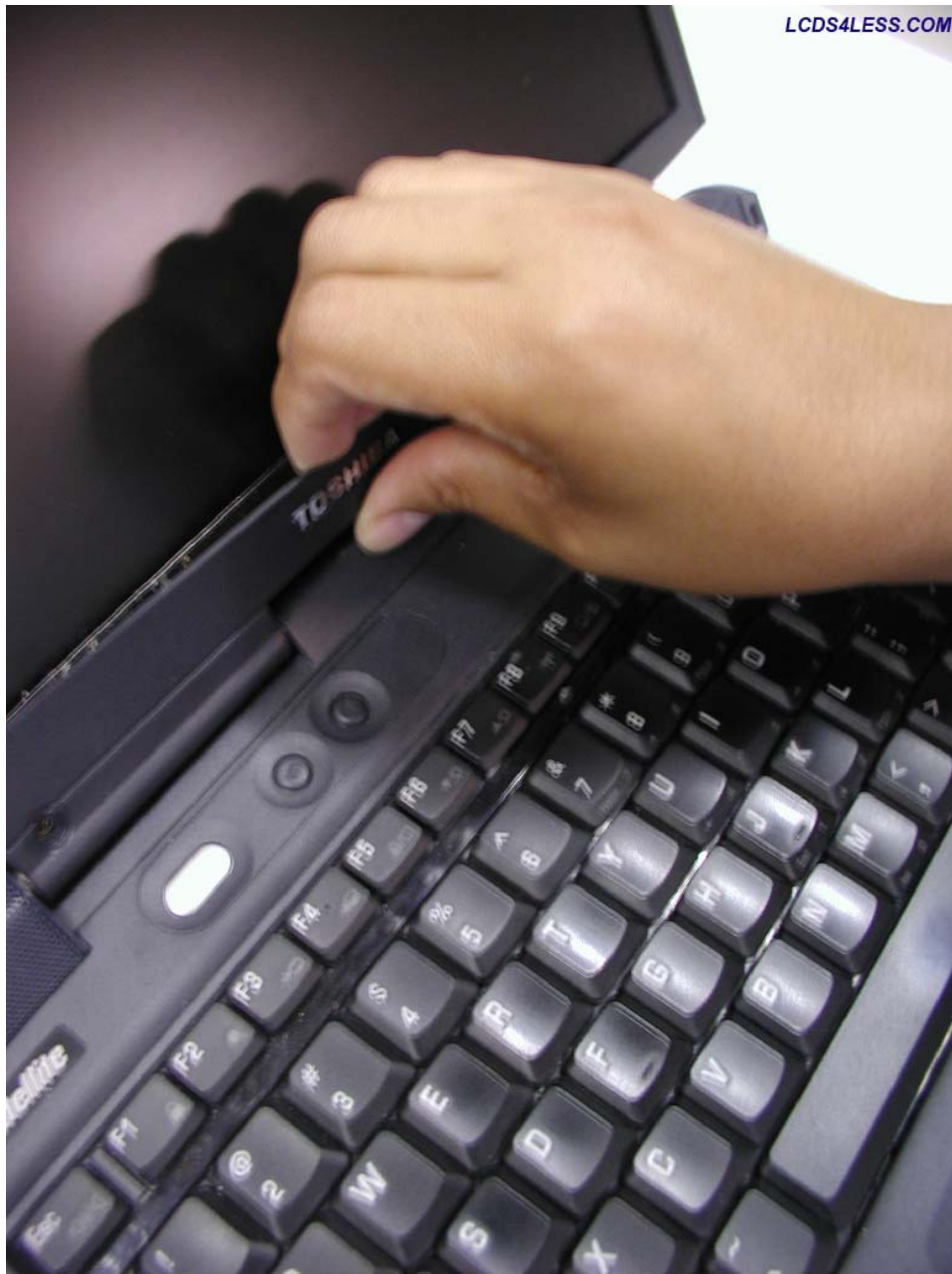


LCDS4LESS.COM

- Unscrew each of the screws securing the front plastic bezel to the display assembly.



- After removing each of the screws, starting at the bottom of the display assembly insert your fingers to unsnap the front bezel. Usually it will easily snap off. If the front bezel does not easily snap off, work the plastic in different directions until it unsnaps.



- After unsnapping the front bezel from the bottom of the display assembly work your fingers around the other sides. When you have worked your fingers around the display assembly to where the latch is located, you may or may not have to slide the latch in order to detach the front bezel.



- Display assembly after front plastic bezel has been removed.



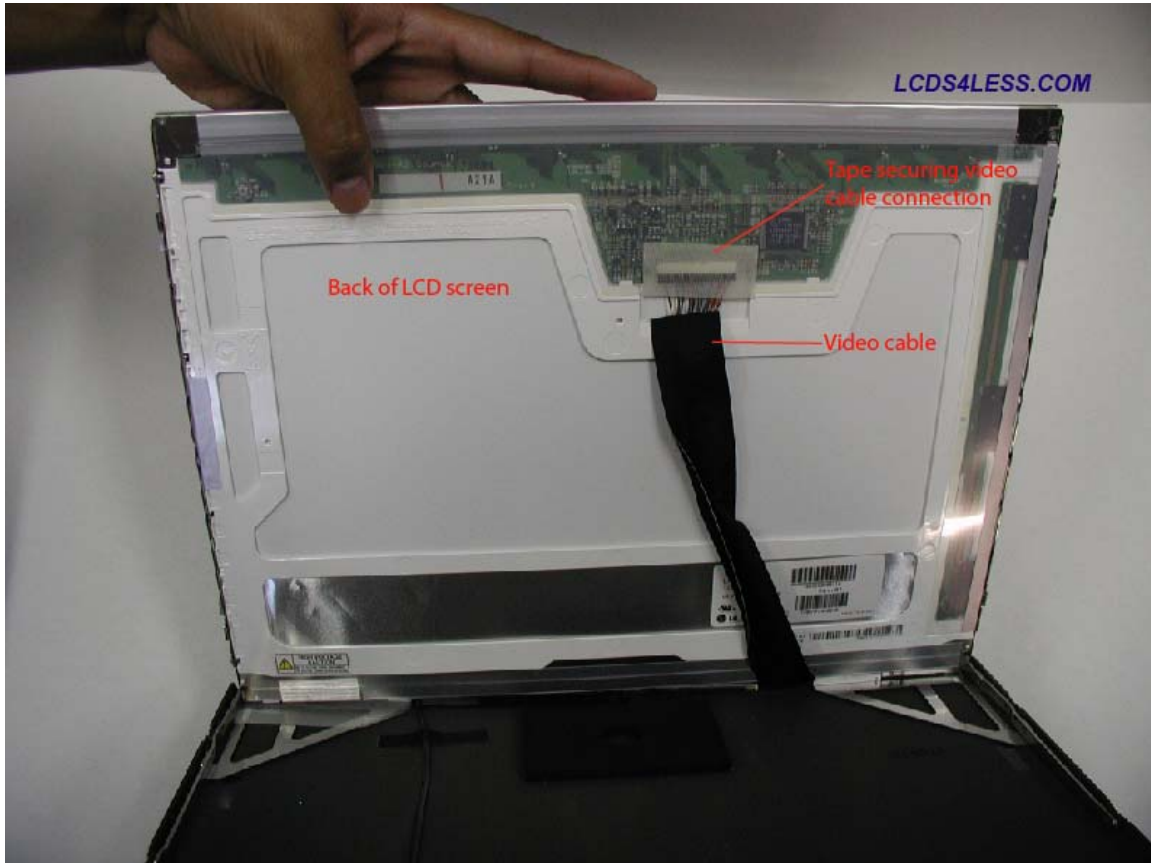
- Close-up of inverter located under LCD screen.



- Tilt the LCD screen forward. If you are unable to tilt the screen forward, you may have to remove the screws from an internal bracket.



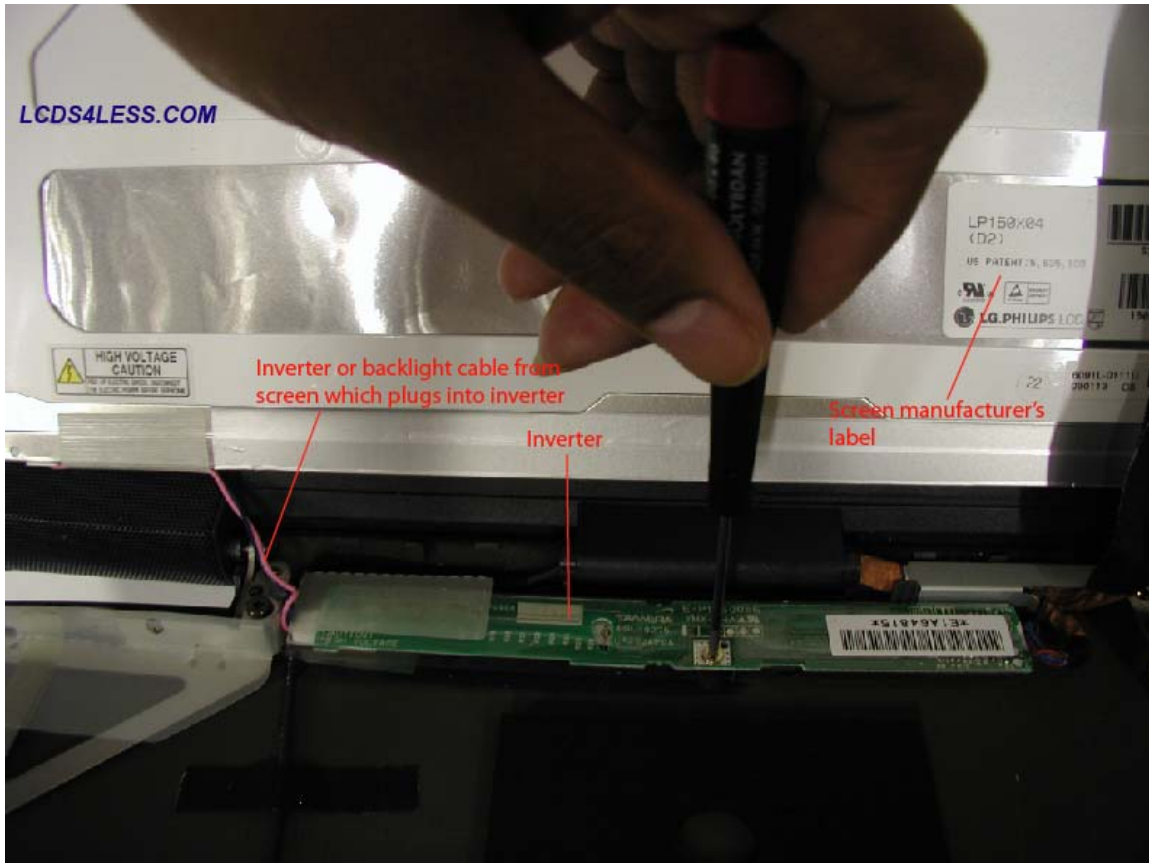
- This is a view of the back of the LCD screen. There will be 2 electronic connections that you will have to disconnect: the video (data) cable and the inverter (power) cable.



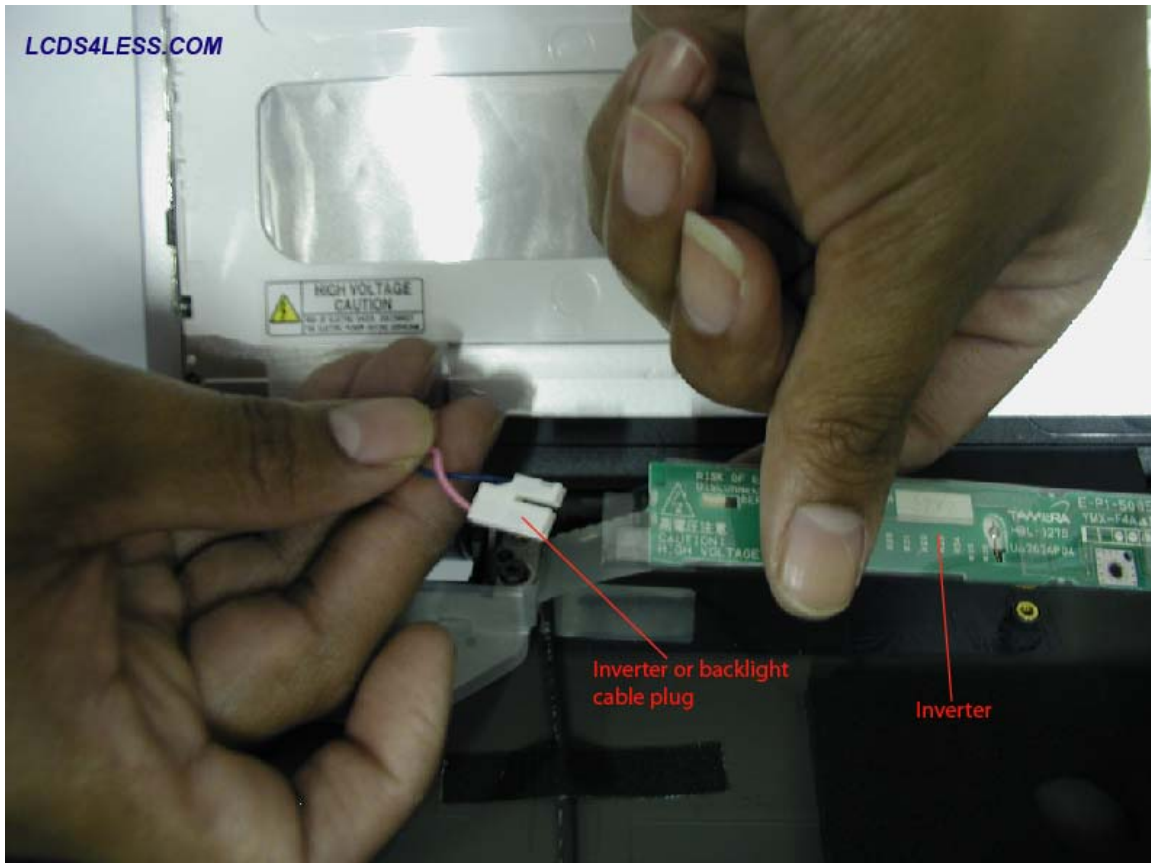
- Remove tape securing video cable. Some Dell notebook models will not use tape; instead will have clips on either side of the video cable.
- Slide video cable out.



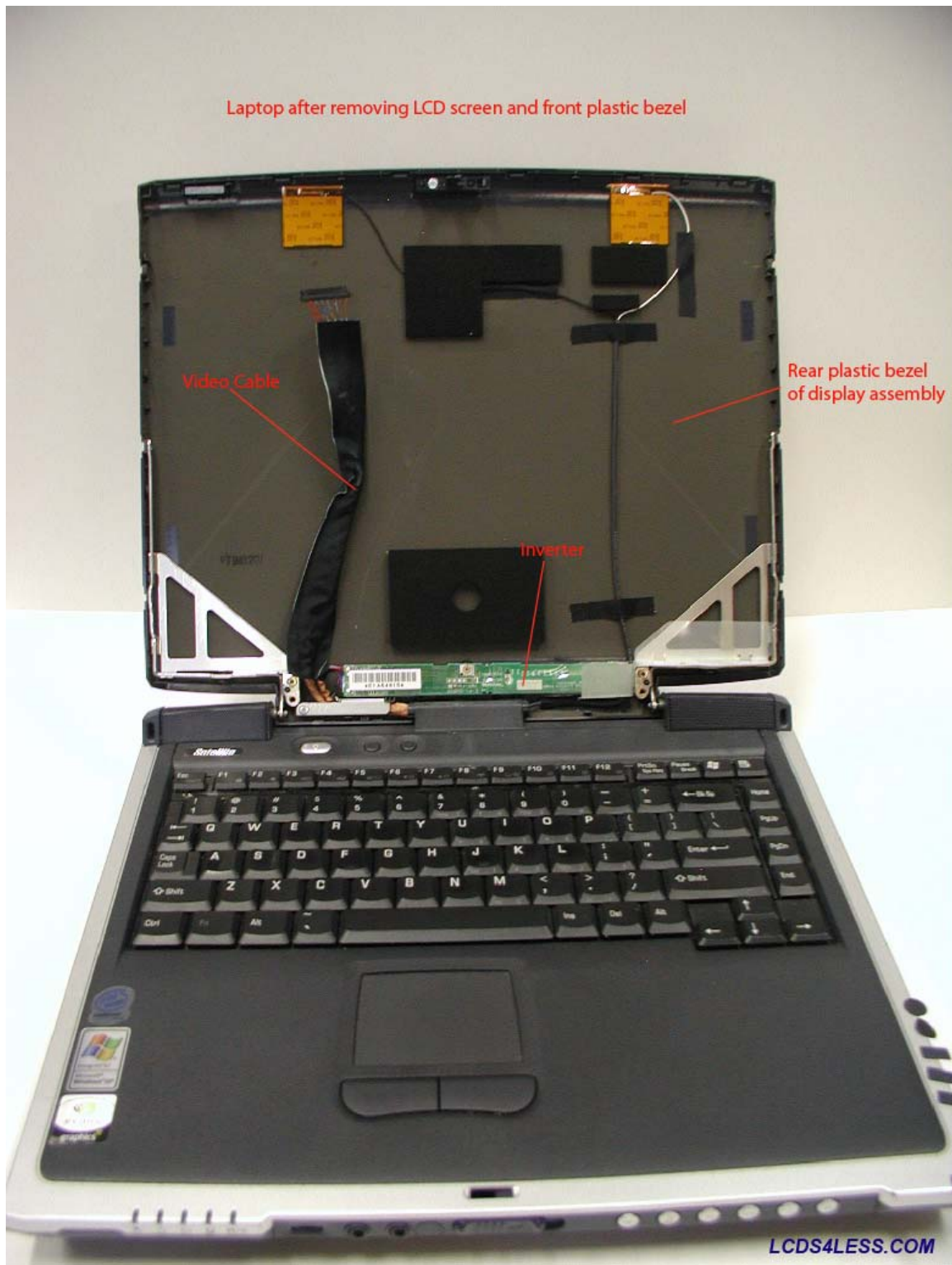
- The inverter is a small device which provides the LCD screen with power. The inverter cable will need to be disconnected from the inverter by sliding it out as in the second picture below. If you are unable to slide the inverter cable because the inverter is in a difficult position, you may need to unscrew it first.



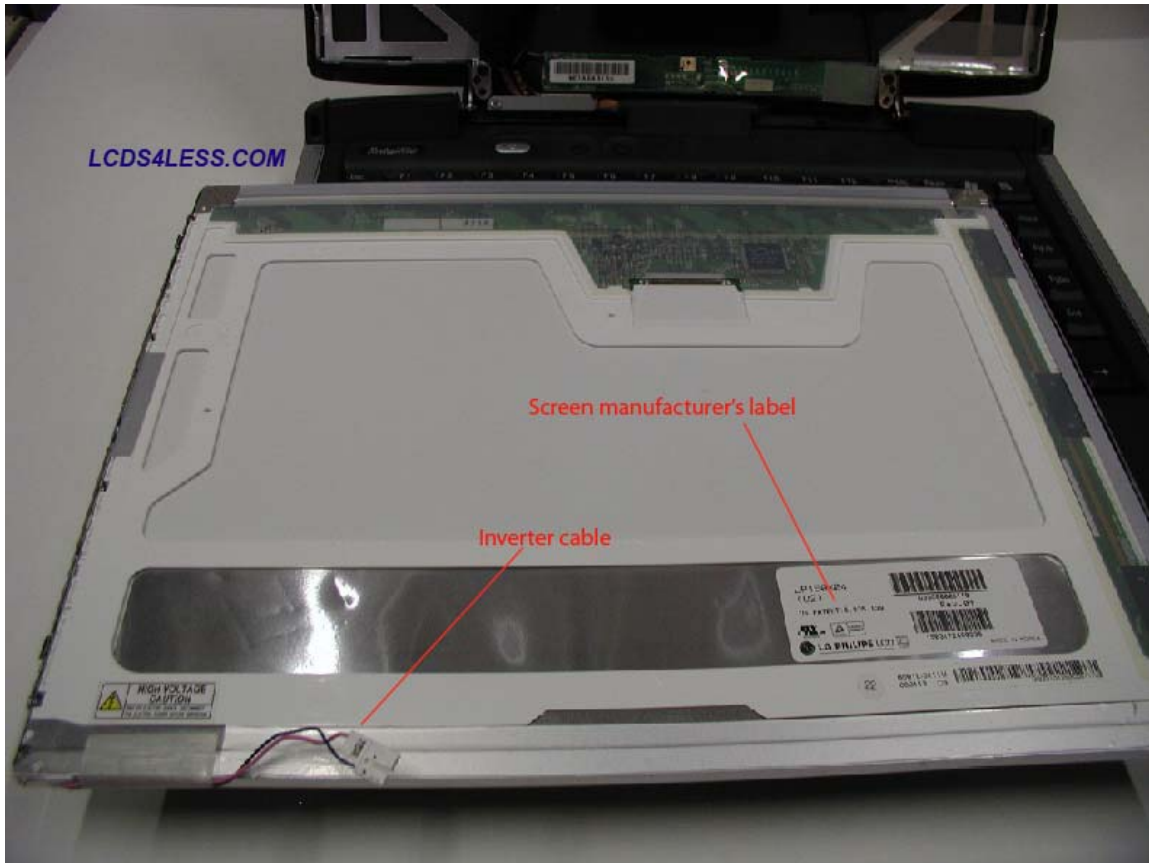
- Slide inverter cable out of inverter.



- You have now completely uninstalled your LCD screen.



- Locate LCD screen manufacturer's label. If there is more than one label, look for a label with a manufacturer's name. Examples of LCD screen manufacturer's include the following: Acer, AU Optronics, Chi Mei, Chung Hwa, HannStar, Hitachi, IBM/IDTech, LG Philips, Matsushita, Mitsubishi, NEC, Quanta, Samsung, Sharp, Sanyo/Torisan, Toshiba and Unipac.



- Look for the LCD screen manufacturer's part number on the screen manufacturer's label. There may be various numbers on the screen manufacturer's label. To help you identify the part number, each screen manufacturer's part number begins a certain way. The following is a list of screen manufacturer's and the first few characters of their part numbers: Acer begins with "L", AU Optronics begins with "B", Chi Mei begins with "N", Chung Hwa begins with "CLAA", HannStar begins with "HSD", Hitachi begins with "TX", IBM/IDTech begins with "IT" or "IA", LG Philips begins with "LP", Matsushita begins with "ED", Mitsubishi begins with "AA", NEC begins with "NL", Quanta begins with "QD", Samsung begins with "LT" or "LTN", Sharp begins with "LQ" or "LM", Sanyo/Torisan begins with "TM" or "LMJK", Toshiba begins with "LTM" or "LTD" and Unipac begins with "UB".

Be aware that a laptop LCD screen may have more than one part number; one by the actual LCD screen manufacturer like the ones above and one by the laptop maker which is usually not on the back of the LCD screen. Laptop makers generally do not make their own LCD screens; they purchase screens from the LCD screen manufacturers. To ensure ordering accuracy, we highly recommend you order by the LCD screen manufacturer's part number and not by the laptop maker's part number.

