

Data Sheet

品 名

ITEM

DC-AC INVERTER

型 號

MODEL NO:

QF132V1.00

料 號

PART NO:

ENGINEER APPROVAL	SIGNATURE	DATE

WinMate Communication INC

9F/3F, No. 175 Ta-Tung Rd., Sec. 1, His-Chih, Taipei Hsien, Taiwan

TEL:886 2 26485758

FAX:886 2 26485161

Data Sheet

1) General

The DC To AC inverter is designed as a low noise high frequency high efficiency and as a low profile and light weight switching power supply.

2) Feature

- Applicable TO 4 Tube
- Constant Current output
- Possesses open load protection
- No load –output auto stop
- Meet TCO 99

3. LCD (Application)

			Remark			
LCD尺寸	Lcm Model	Brand	JP1	JP2	JP3	JP6
17"		Chi Mei Hynix	OFF	OFF	OFF	
	L170E1,E3	A U				

4. Operating Conditions

Item	Symbol	Conditions	MIN	MAX	Unit	Remark
Input Voltage	Vin		10	-	V	
Operating Temperature	Top	Ha=90%RH	0	65		
Storage Temperature	Tstg	Ha=95%RH	-10	80		
Operating Humidity	Hop	Ta=0 55	20	90	%RH	
Storage Humidity	Hstg	Ta=20 80	-	95	%RH	

5. Operating Characteristics

Item	Symbol	Conditions	MIN.	TYP.	MAX.	Unit	Remark
Input Voltage	Vin	GND=0V	10.8	12	13.2	V	
Input Current (Low Brightness)	IinL	Vin=TYP. $\pm 1\%$ ON VR=MIN (Iout=MIN)	810	930	1050	mA	
Input Current (High Brightness)	IinH	Vin=TYP. $\pm 1\%$ ON VR=MAX (Iout=MAX)	1700	1850	2100	mA	
Lamp Current (Low Brightness)	IoutL	Vin=TYP. $\pm 1\%$ ON VR=MIN (Iout=MIN)	3.3	4.5	5.6	mA rms	
Lamp Current (High Brightness)	IoutH	Vin=TYP. $\pm 1\%$ ON VR=MAX (Iout=MAX)	11.8	12.5	13.3	mA rms	

Working Frequency			40	43	48	KHZ	
Dimming		Tube Current	>2.5:1	-	-		
Brightness Control		Connection of Voltage	5	-	0	V	
Output Voltage		CCFT Current =5mA		710		V	

6.Connector

6-1. (P1) Input Connector

PIN No	Symbol	Description
1	Vin	DC+12V
2	Vin	DC+12V
3	GND	Ground
4	Brightness	Digital Brightness Control
5	GND	Ground
6	Control	ON/OFF control ON=+5V OFF=0V

6-2 (P2&P3) Output Connector

PIN No	Symbol	Description
1	Output	Lamp High Voltage
2	Output	Lamp High Voltage
3	NC	
4	Output	Lamp Low Voltage

6-3 Connector Model No & Brand

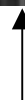
Connector No.	Connector Parts No	Brand
P1	S6B-PH-SM3	JST
P2	SM04(4.0)	JST
P4	SM04(4.0)	JST



S6B-PH-SM3



SM04(4.0)



(pin1)

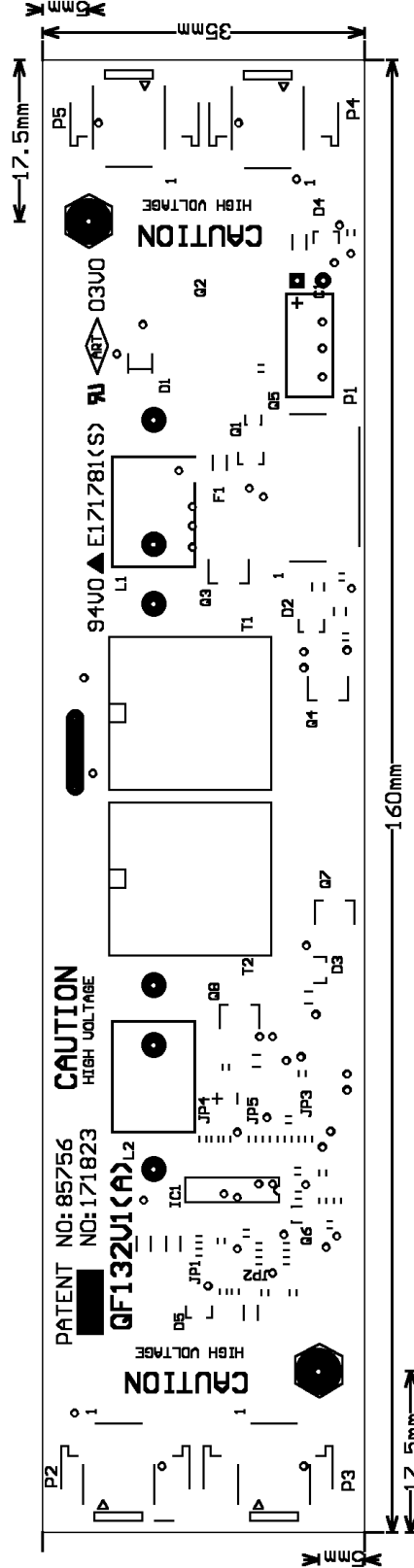
(pin1)

7. Mechanical Characteristics

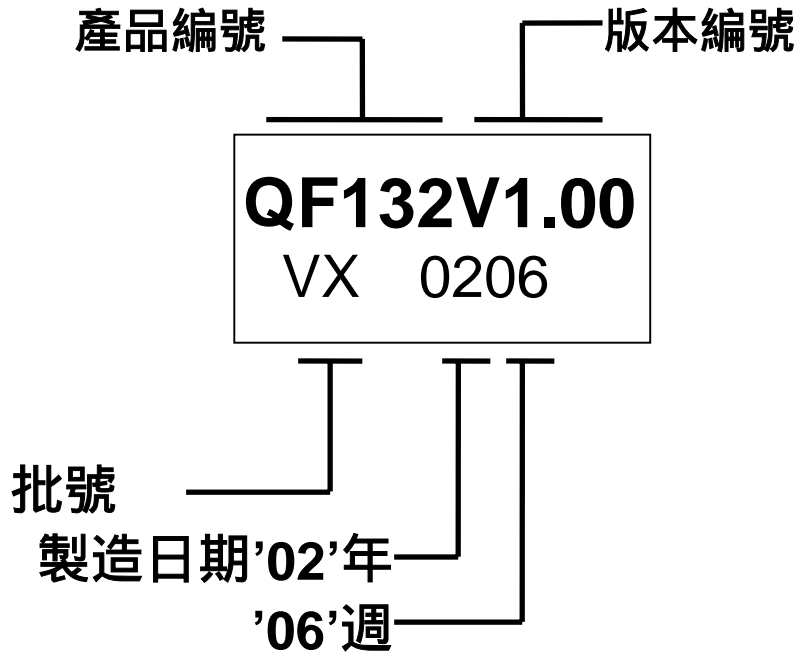
Dimension: 160mm * 35mm * 11mm

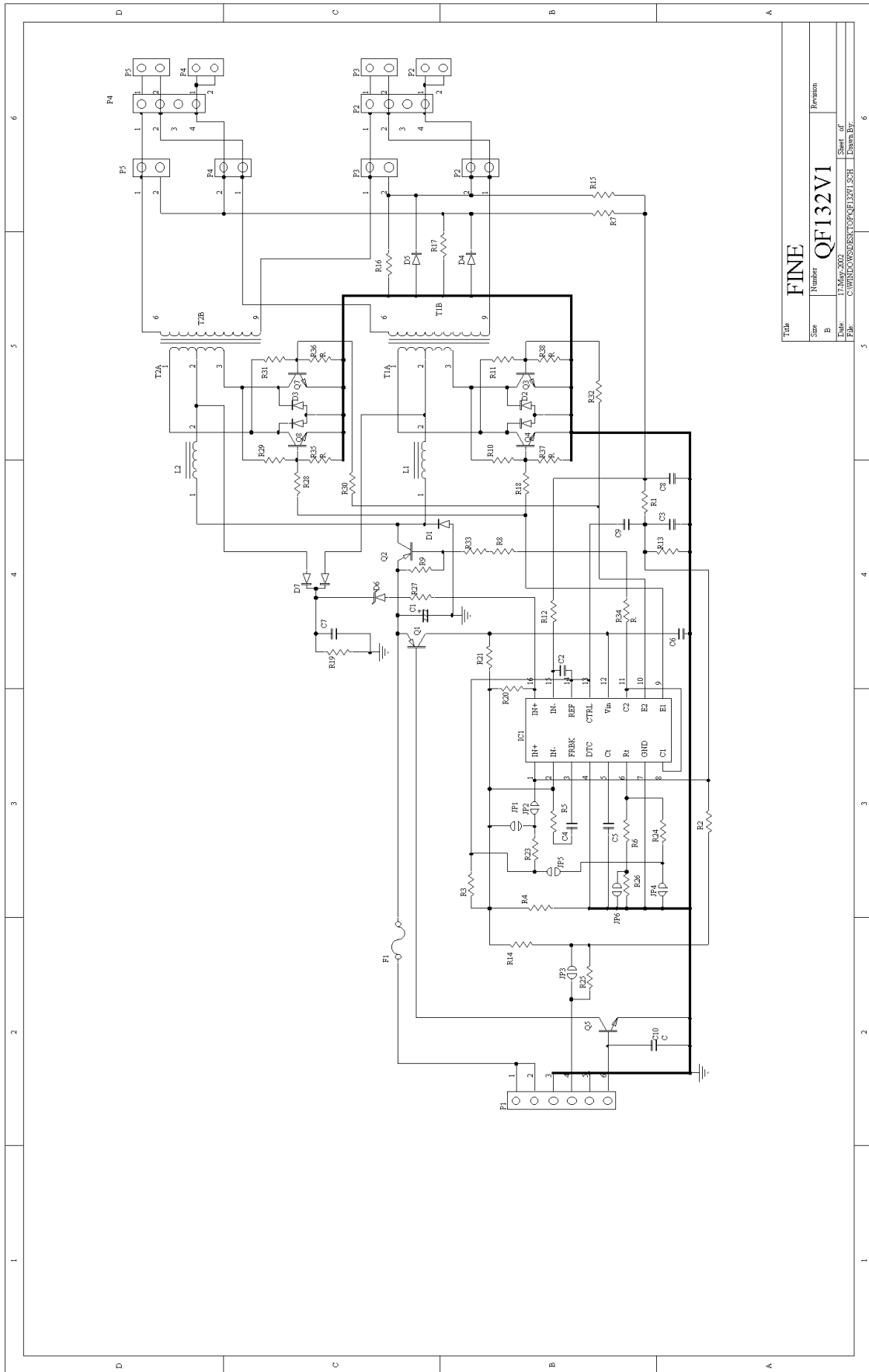
Weight: MAX. 42g

PCB DIMENSION

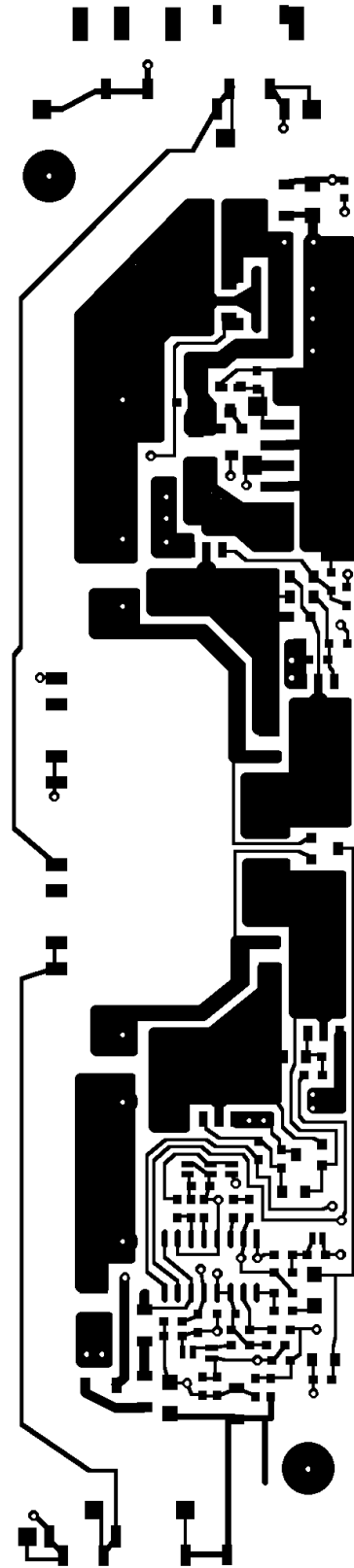
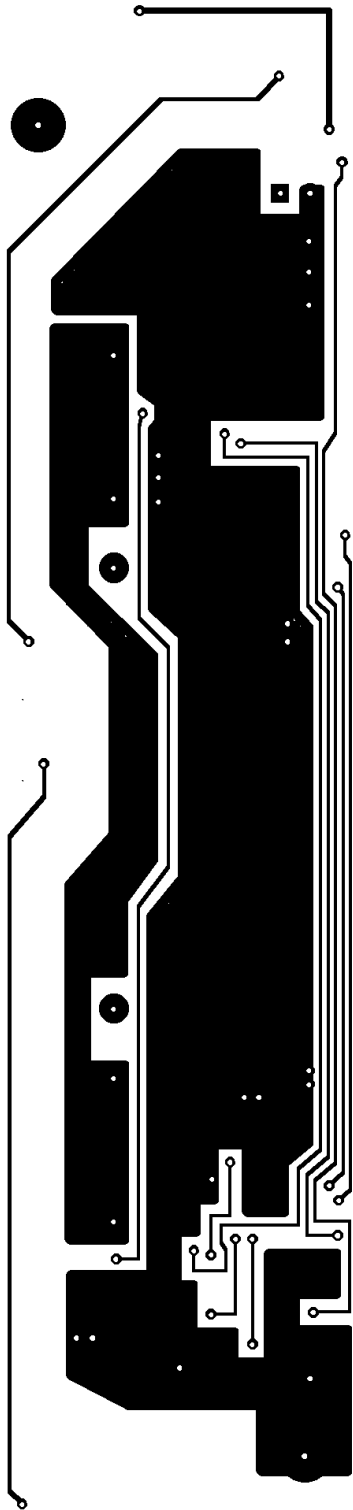


編碼說明

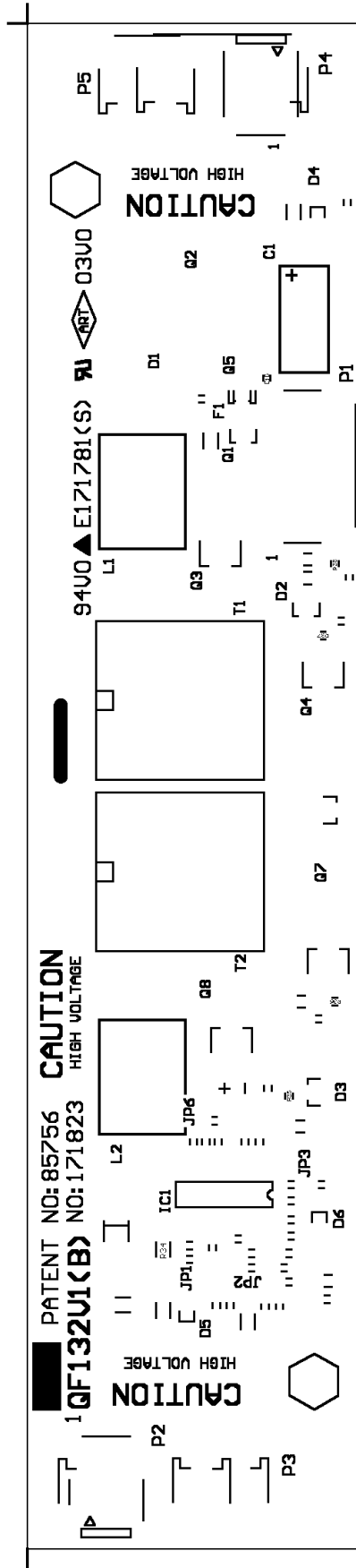




PCB LAYOUT



PCB LAYOUT



ITEM	MATERIAL	CLASS	UL FILE NO	MANUF ACTURER
1.FERRITE CORE	2F8			TOMITA
	NC-2H			NICERA
2.BOBBIN	LCP (94V-0) E4008L	130°C	E54705(M)	SUMITOMO CHEMICAL CO LTD
	(94V-0) PM9630	150°C	E41429(M)	SUMITOMO BAKELITE CO LTD
3.TAPE	3M NO.1350(b)	130°C	E17385(N)	MINNESOTA MINING & MFG CO ELECTRICAL SPECIALTIES DIV
4.MYLAR FILM	LUMIRROR Z2 (94VTM-2)	105°C	E86511(M)	TORAY INDUSTRIES INC FILM DIV
5.WIRE	POLYURETHANE ENAMELLED COPPER UEW-2	130°C	E79029(S)	TOTOKU ELECTRIC CO.LTD
	DD	130°C		PACIFIC ELECTRIC WIRE & CABLE CO.LTD
6.VARNISH	BC-359	130°C	E51047(M)	JOHN C DOLPH CO
	BC-346A	200°C	E51047(M)	JOHN C DOLPH CO
7.COVER	LCP(94V-0) E4008L	130°C	E54705(M)	SUMITOMO CHEMICAL CO LTD
8.EPOXY	R-10(94V-0)	160°C	E70012(M)	ZU YU CHEMICAL CORP.