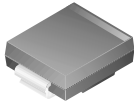
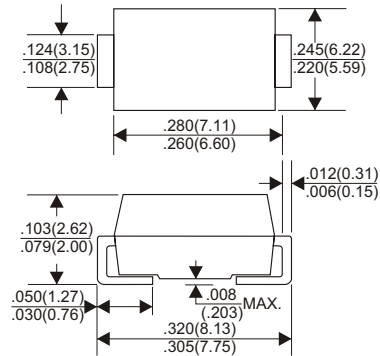


RoHS Compliant Product

A suffix of "-C" specifies halogen & lead-free



DO-214AB(SMC)



## FEATURES

- \* Ideal for surface mount applications
- \* Easy pick and place
- \* Built-in strain relief
- \* High surge current capability

## MECHANICAL DATA

- \* Case: Molded plastic
- \* Epoxy: UL 94V-0 rate flame retardant
- \* Terminals: Solder plated, solderable per MIL-STD-202F, method 208 guaranteed
- \* Polarity: Color band denotes cathode end
- \* Mounting position: Any
- \* Weight: 1.10 gram

## MAXIMUM RATINGS AND ELECTRICAL CHARACTERISTICS

Rating 25°C ambient temperature unless otherwise specified.  
Single phase half wave, 60Hz, resistive or inductive load.  
For capacitive load, derate current by 20%.

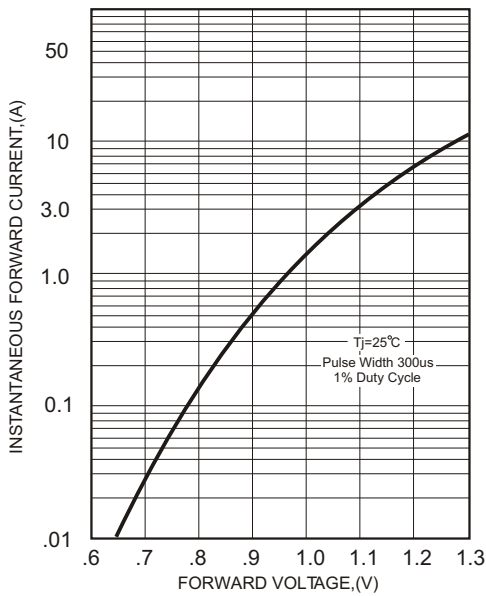
TYPE NUMBER	QG301C	QG302C	QG303C	QG304C	QG305C	QG306C	QG307C	UNITS	
Maximum Recurrent Peak Reverse Voltage	50	100	200	400	600	800	1000	V	
Maximum RMS Voltage	35	70	140	280	420	560	700	V	
Maximum DC Blocking Voltage	50	100	200	400	600	800	1000	V	
Maximum Average Forward Rectified Current									
.375"(9.5mm) Lead Length at Ta=75°C								3.0	A
Peak Forward Surge Current, 8.3 ms single half sine-wave superimposed on rated load (JEDEC method)								100	A
Maximum Instantaneous Forward Voltage at 3.0A								1.1	V
Maximum DC Reverse Current Ta=25°C								5.0	µA
at Rated DC Blocking Voltage Ta=100°C								100	µA
Typical Junction Capacitance (Note 1)								15	pF
Typical Thermal Resistance R JA (Note 2)								50	°C/W
Operating and Storage Temperature Range Tj, Tstg								-65 — +175	°C

### NOTES:

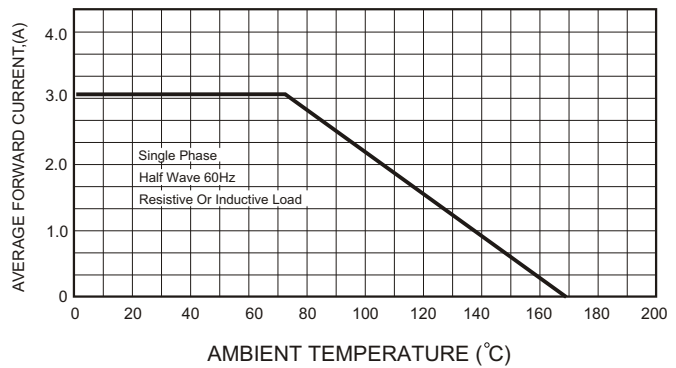
1. Measured at 1MHz and applied reverse voltage of 4.0V D.C.
2. Thermal Resistance from Junction to Ambient.

**RATING AND CHARACTERISTIC CURVES (QG301C THRU QG307C)**

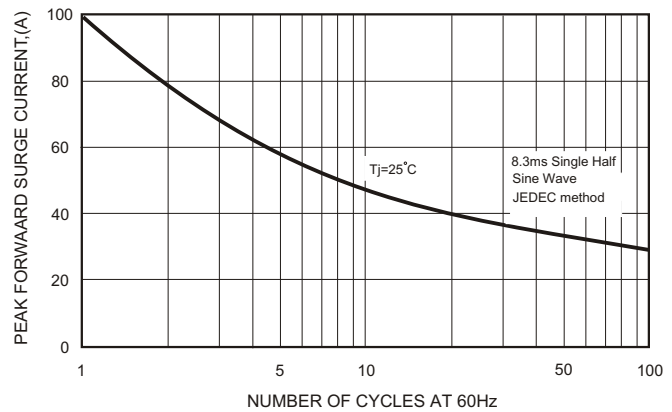
**FIG.1-TYPICAL FORWARD CHARACTERISTICS**



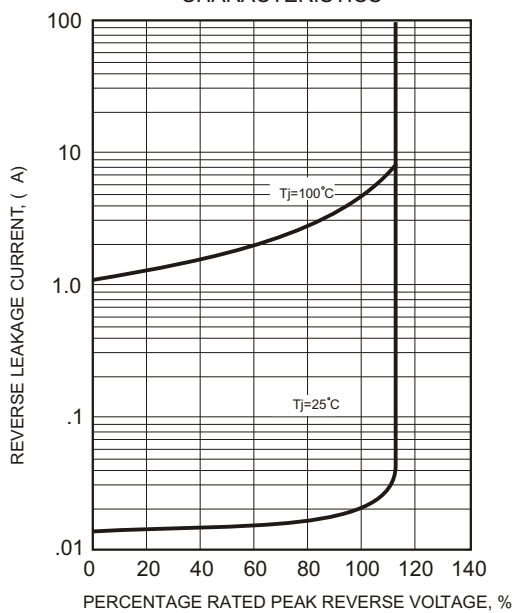
**FIG.2-TYPICAL FORWARD CURRENT DERATING CURVE**



**FIG.4-MAXIMUM NON-REPETITIVE FORWARD SURGE CURRENT**



**FIG.3 - TYPICAL REVERSE CHARACTERISTICS**



**FIG.5-TYPICAL JUNCTION CAPACITANCE**

