

SPECIFICATIONS

Mechanical

Connector Mating Force: 4.5kg (9.92Lb) max.
Connector Un mating Force: 1.00~4.00kg (2.2~8.82Lb) min.
Durability: 100 Cycles

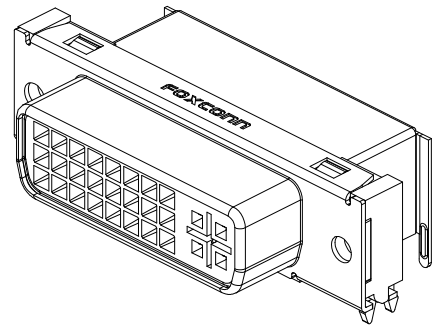
Electrical

Voltage Raging: 40V (RMS)
Current Rating: 1.5A
Contact Resistance: 20mΩ max.
Dielectric Withstanding Voltage: 500V AC/1min min.
Insulation Resistance: 1000MΩ min.

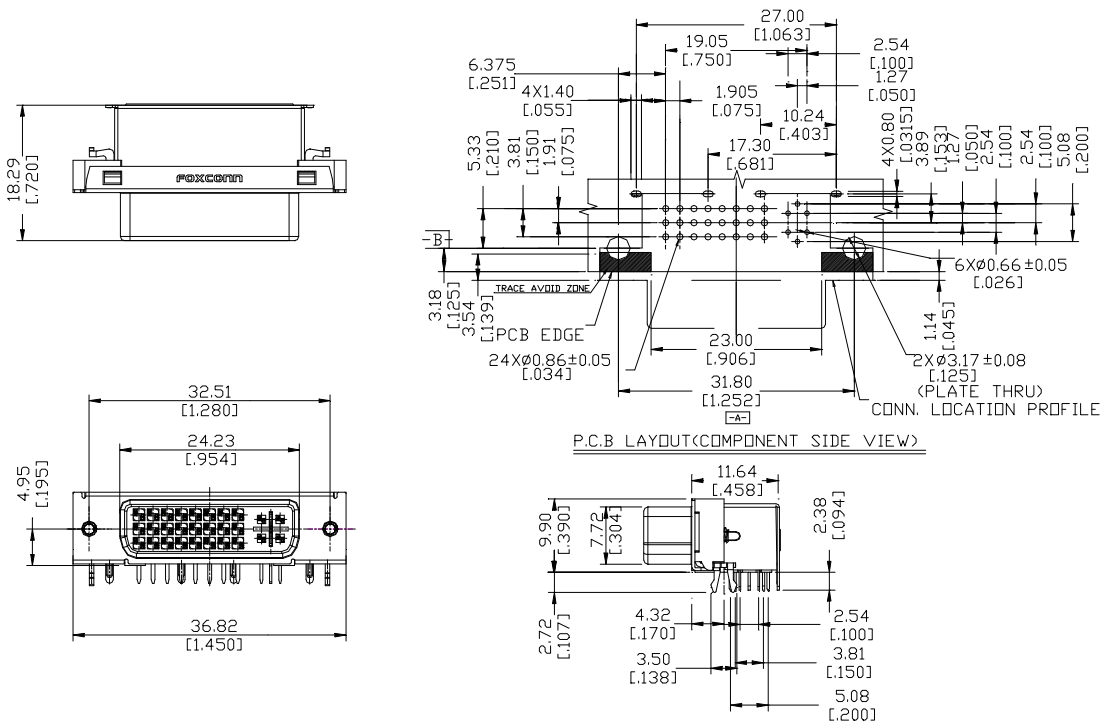
Physical

Housing: Thermoplastic, UL 94V-0 rated in IVORY Color
Contact: Copper alloy
Plating: See "ORDERING INFORMATION"
Resistance to Soldering Heat: 260°C/5sec
Operating Temperature: -20°C to +85°C
Recommended Thickness of PCB: 1.57[.062]

QH Series
Normal Type, T/H
1.905mm [.075"] Pitch
29 Pin.



DRAWING



ORDERING INFORMATION

PRODUCT NO.:QH 1112 1- CA84 - 4F

